

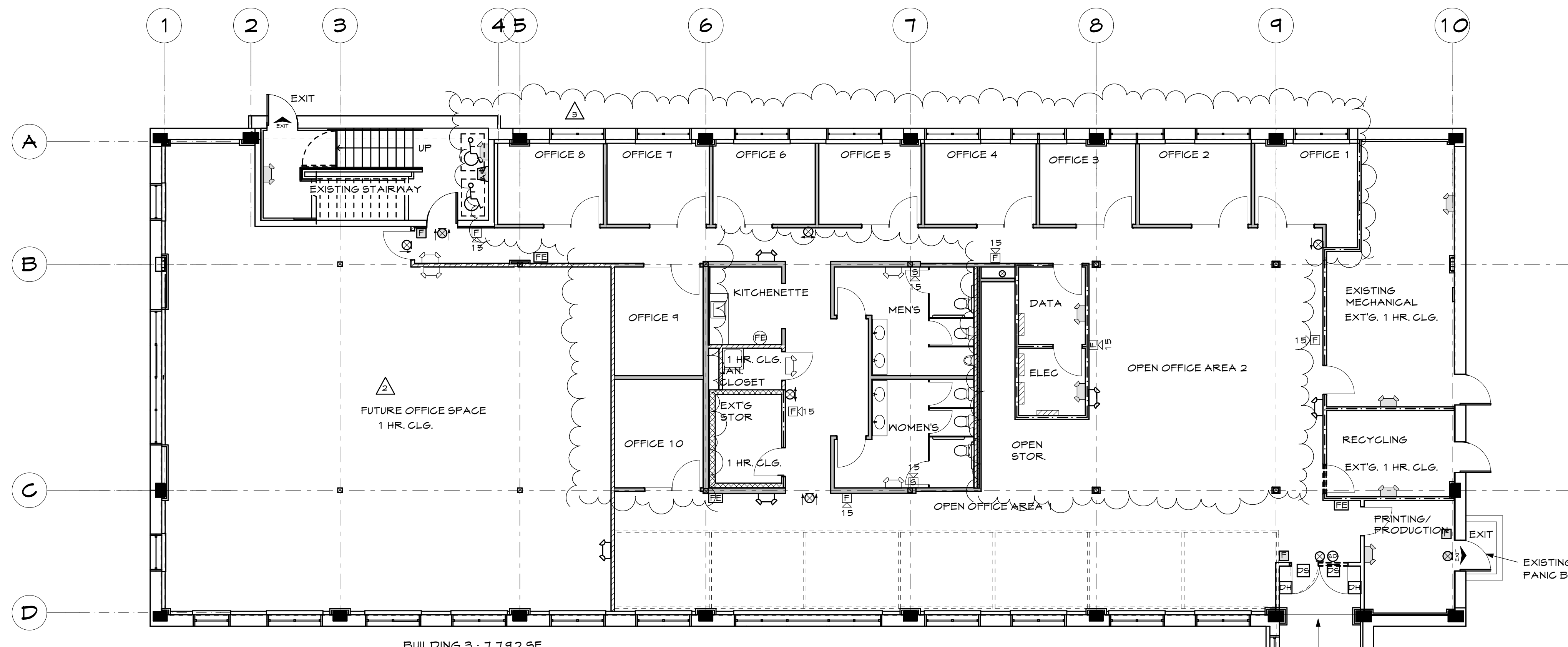
WHIPPLE - CALLENDER ARCHITECTS

PO BOX 1276
PORTLAND, ME 04104
P 207.715.2616
F 207.715.9631
www.whipplecallender.com

DATE	DESCRIPTION
03 13 12	ISSUED FOR REVIEW & PERMITTING
04 04 12	ELECTRICAL & FIRE RATING UPDATES
04 05 12	MEETING ROOM REVISIONS PER CITY
04 13 12	REVISIONS TO BUILDING 2 & 1 ELEC FIXTURE
04 18 12	REVISIONS TO FIRE RATED CEILING AREA
05 14 12	REVISIONS TO PLAN - BLDG 3 FITNESS RM
05 16 12	REVISIONS TO MEETING ROOM LIGHTING

DATE: 18 MAY 12
CHECKED BY: AEC
DRAWN BY: JRP
JOB: 11-WCO
SHEET TITLE: GARDEN LEVEL KEY PLAN
GARDEN LEVEL LIFE SAFETY PLAN
1/8" = 1'-0"

A1.1



BUILDING 3 : 7,192 SF

- LIFE SAFETY DEVICE LEGEND**
- EXIT SIGN WITH ARROWS AS INDICATED - CEILING MOUNTED
 - EXIT SIGN WITH ARROWS AS INDICATED - WALL MOUNTED
 - EXISTING EXIT SIGN
 - TWIN HEAD EMERGENCY LIGHT - 4 AVAILABLE FOR REUSE
 - EXISTING TWIN HEAD EMERGENCY LIGHT
 - FIRE ALARM SYSTEM-STROBE LIGHT (#=CANDELLA)
 - FIRE ALARM SYSTEM-HORN/STROBE LIGHT (#=CANDELLA)
 - EXISTING FIRE ALARM SYSTEM-HORN/STROBE LIGHT
 - FIRE ALARM MANUAL PULL
 - EXISTING FIRE ALARM MANUAL PULL
 - FIRE EXTINGUISHER IN CABINET
 - FIRE EXTINGUISHER - NO CABINET
 - FIRE EXTINGUISHER - NO CABINET
 - ELECTRICAL PANEL
 - EXISTING AREA OF REFUGE CALL STATION
 - DOOR SWITCH
 - ELECTRIC DOOR HOLD OPEN
 - SMOKE DETECTOR FOR DOOR HOLDERS

CODE COMPLIANCE INFORMATION

OCCUPANCY CLASSIFICATION:
IBC: GROUP B - BUSINESS
NFPA: EXISTING BUSINESS (CH. 9.9)
SINGLE TENANT USING ENTIRE BUILDING

CONSTRUCTION TYPE:
IBC: TYPE 2B
NFPA: TYPE II (000)

EXISTING BUILDING SIZE:
HEIGHT AT 3 STORIES - 42'-0"
BUILDING AREA - 57,495 SF
BUILDING FOOTPRINT - 20,947 SF

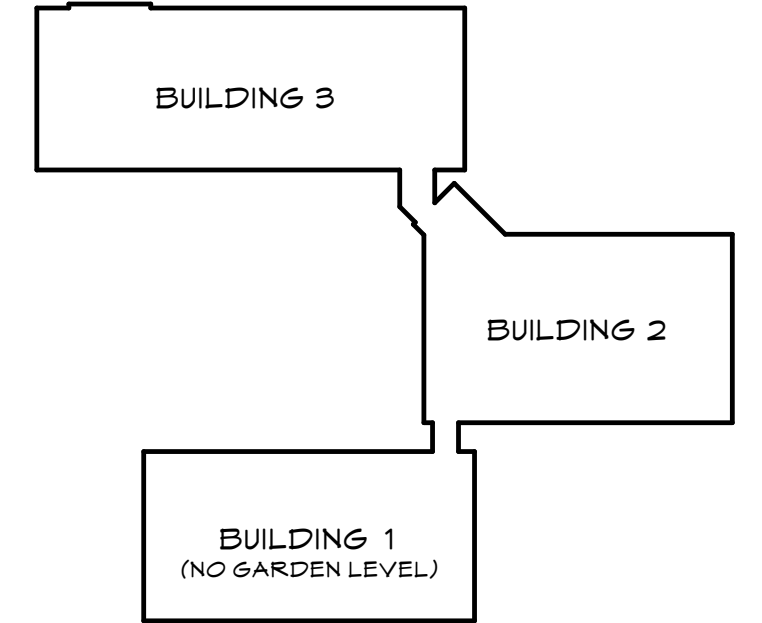
OCCUPANT LOAD:
OFFICE: 100 SF/PERSON = 575 TOTAL BLDG.

SEPARATION REQUIREMENTS:
ONE HOUR FIRE SEPARATION ASSEMBLIES AT:
VERTICAL SHAFTS & STAIRWELLS (ALL EXISTING, NO CHANGES FOR THIS RENOVATION)
SEPARATION OF HAZARDS: GENERAL STORAGE, BOILER/FURNACE ROOMS

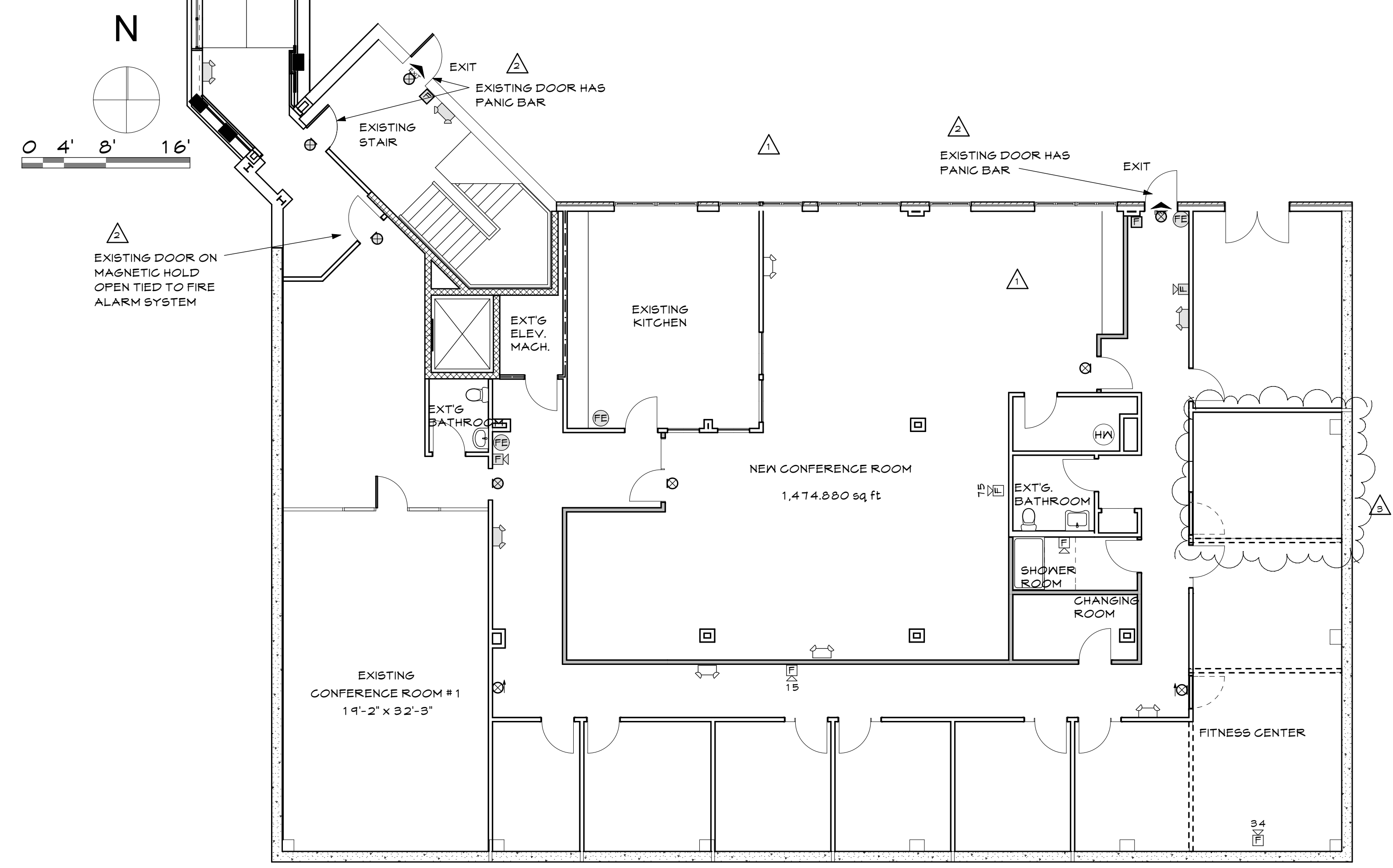
FIRE SUPPRESSION:
NONE EXISTING, NONE REQUIRED PER CODE

FIRE ALARM:
EXISTING, MONITORED SYSTEM
NEW DEVICES TO BE ADDED TO EXISTING SYSTEM AS SHOWN ON PLANS

MEANS OF EGRESS:
MAX. TRAVEL DISTANCE: 200 FT
MAX. DEAD END CORRIDOR: 50 FT
MAX. COMMON PATH OF TRAVEL: 75 FT



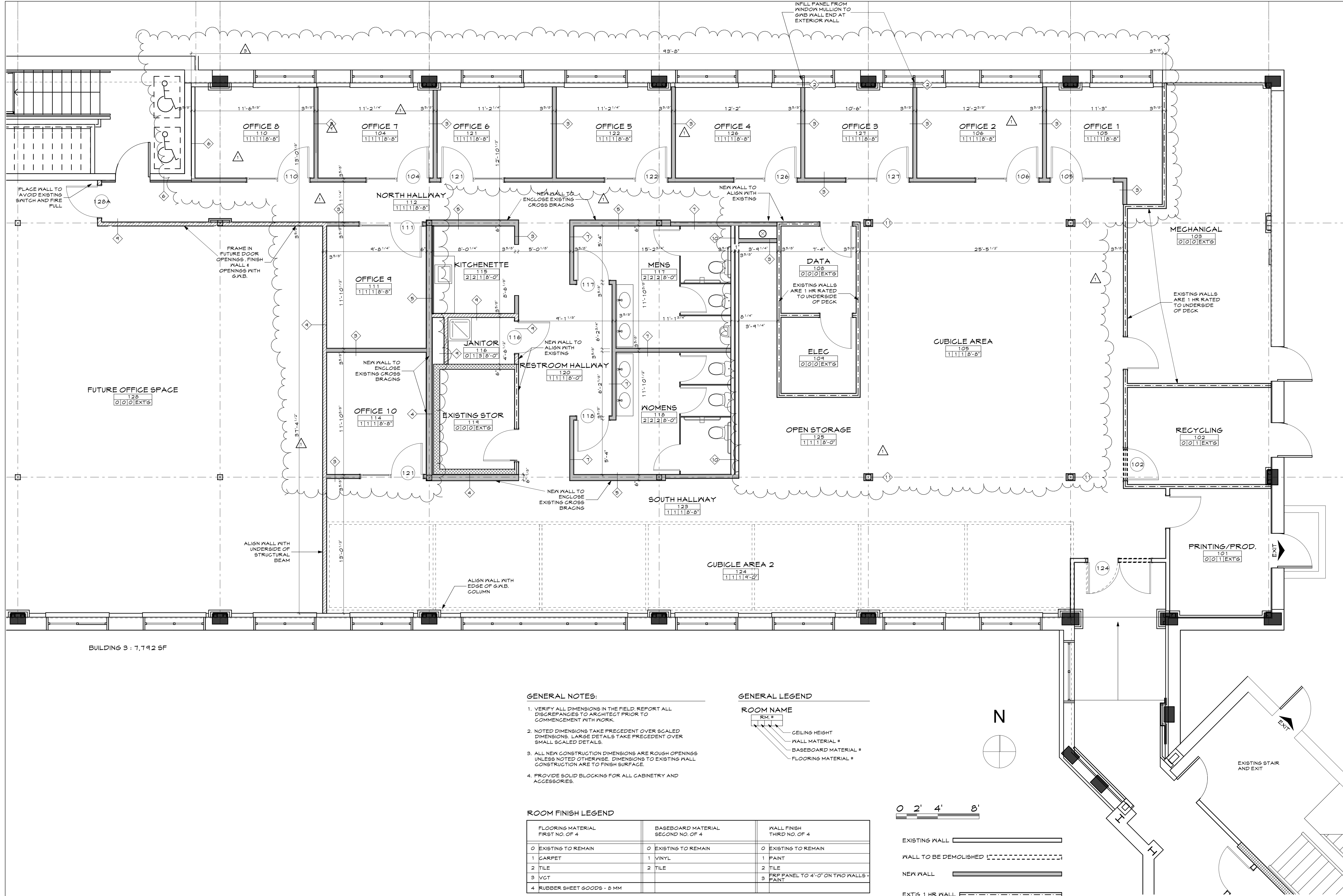
KEY PLAN OF BUILDING LAYOUT



BUILDING 2 : 7,563 SF

1 GARDEN LEVEL KEY PLAN AND LIFE SAFETY LAYOUT
SCALE: 1/8" = 1'-0"

THIS DRAWING IS AN INSTRUMENT OF SERVICE AND SHALL REMAIN THE PROPERTY OF WHIPPLE CALLENDER ARCHITECTS. IT SHALL NOT BE USED FOR ANY OTHER PURPOSE THAT FOR WHICH IT IS SPECIFICALLY FURNISHED.

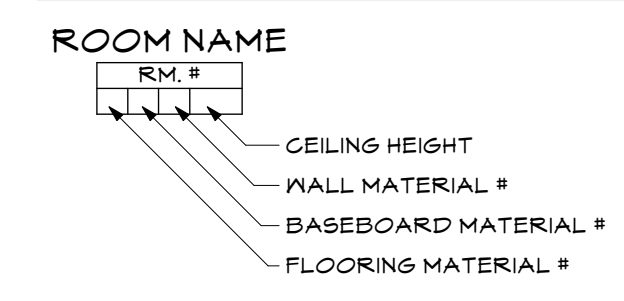


BUILDING 3 : 7,142 SF

GENERAL NOTES:

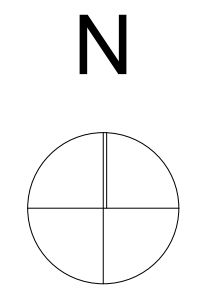
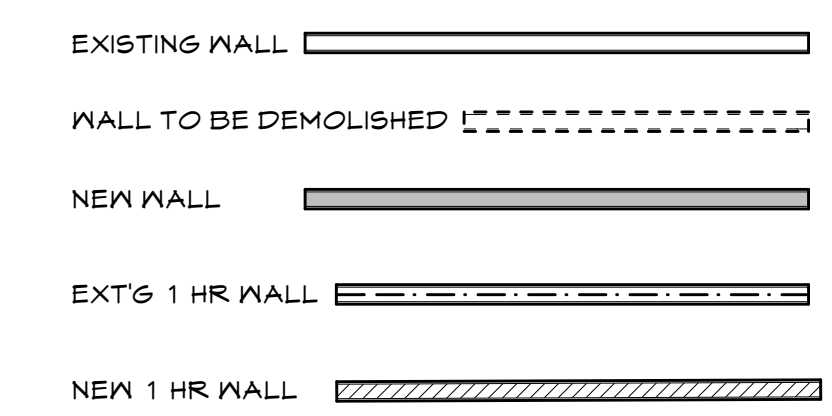
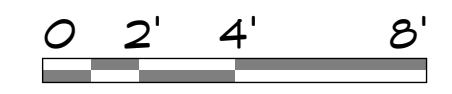
1. VERIFY ALL DIMENSIONS IN THE FIELD. REPORT ALL DISCREPANCIES TO ARCHITECT PRIOR TO COMMENCEMENT WITH WORK.
2. NOTED DIMENSIONS TAKE PRECEDENT OVER SCALED DIMENSIONS. LARGE DETAILS TAKE PRECEDENT OVER SMALL SCALED DETAILS.
3. ALL NEW CONSTRUCTION DIMENSIONS ARE ROUGH OPENINGS UNLESS NOTED OTHERWISE. DIMENSIONS TO EXISTING WALL CONSTRUCTION ARE TO FINISH SURFACE.
4. PROVIDE SOLID BLOCKING FOR ALL CABINETS AND ACCESSORIES.

GENERAL LEGEND



ROOM FINISH LEGEND

FLOORING MATERIAL FIRST NO. OF 4	BASEBOARD MATERIAL SECOND NO. OF 4	WALL FINISH THIRD NO. OF 4
0 EXISTING TO REMAIN	0 EXISTING TO REMAIN	0 EXISTING TO REMAIN
1 CARPET	1 VINYL	1 PAINT
2 TILE	2 TILE	2 TILE
3 VGT		3 FRP PANEL TO 4'-0" ON TWO WALLS - PAINT
4 RUBBER SHEET GOODS - 8 MM		



1 GARDEN LEVEL PLAN - BUILDING 3
A1.2 SCALE: 1/4" = 1'-0"

THIS DRAWING IS AN INSTRUMENT OF SERVICE AND SHALL REMAIN THE PROPERTY OF WHIPPLE CALLENDER ARCHITECTS. IT SHALL NOT BE USED FOR ANY OTHER PURPOSE THAT FOR WHICH IT IS SPECIFICALLY FURNISHED.

WOODARD & CURRAN
 GARDEN LEVEL RENOVATIONS
 PORTLAND, MAINE
 41 HUTCHINS DRIVE

LICENSED ARCHITECT
 ANNE E. CALLENDER
 No. 1861
 STATE OF MAINE

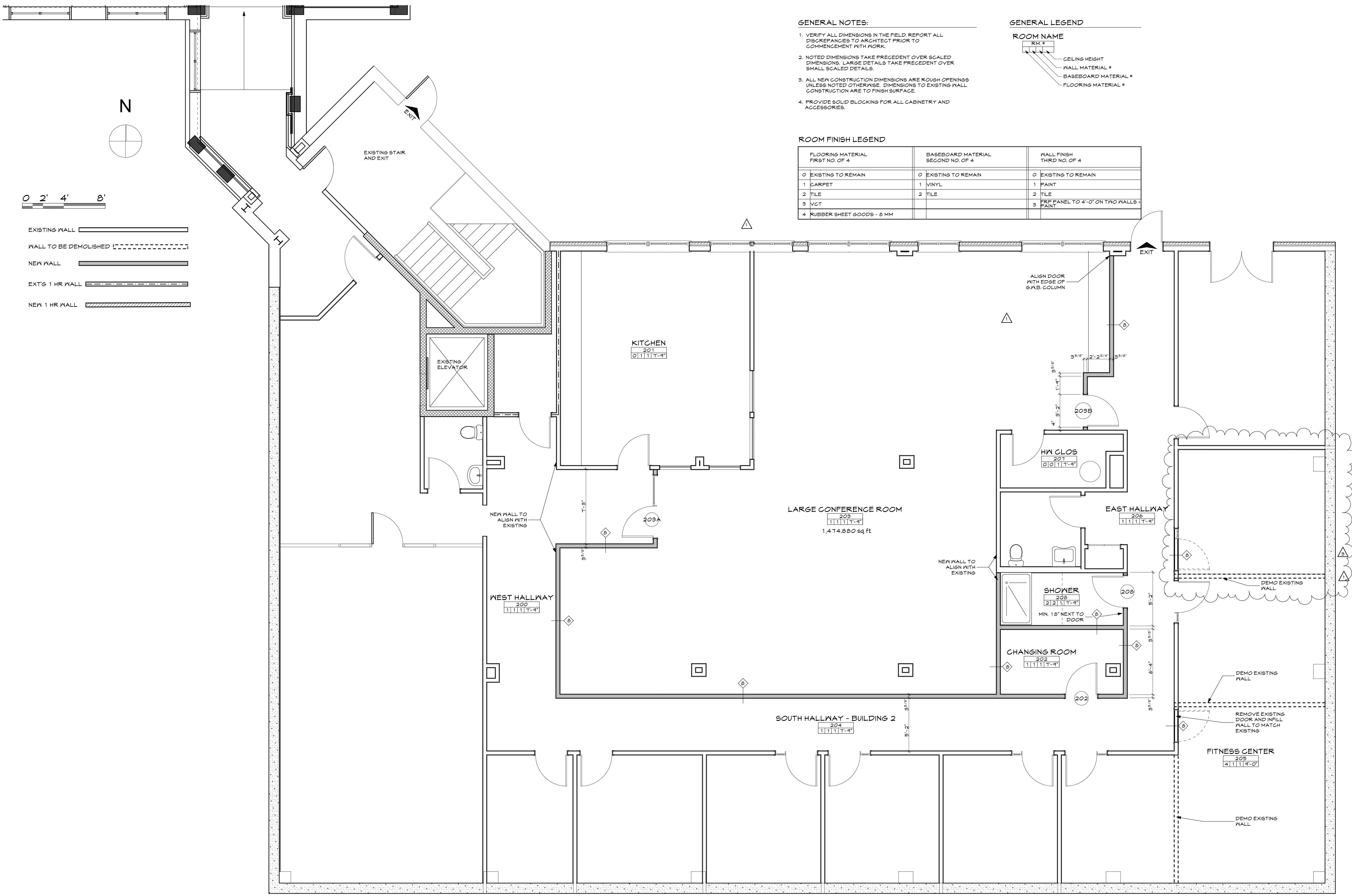
WHIPPLE - CALLENDER ARCHITECTS

PO BOX 1216
 PORTLAND, ME 04104
 P 207.715.2616
 F 207.715.9631
 www.whipplecallender.com

DATE	DESCRIPTION
03 13 12	ISSUED FOR REVIEW & PERMITTING
04 04 12	ELECTRICAL & FIRE RATING UPDATES
04 05 12	MEETINGS ROOM REVISIONS PER CITY
04 13 12	REVISIONS TO BUILDING 2 & ELEC FIXTURE
04 18 12	REVISIONS TO FIRE RATED CEILING AREA
05 14 12	REVISIONS TO PLAN - BLDG 3 FITNESS RM
05 16 12	REVISIONS TO MEETINGS ROOM LIGHTING

DATE: 18 MAY 12
 CHECKED BY: AEC
 DRAWN BY: JRP
 JOB: 11-WCO
 SHEET TITLE: GARDEN LEVEL - BUILDING 3
 SCALE: 1/4" = 1'-0"

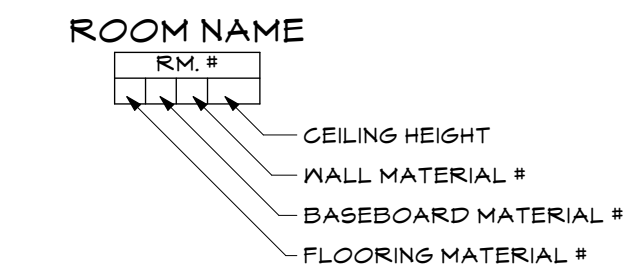
A1.2



GENERAL NOTES:

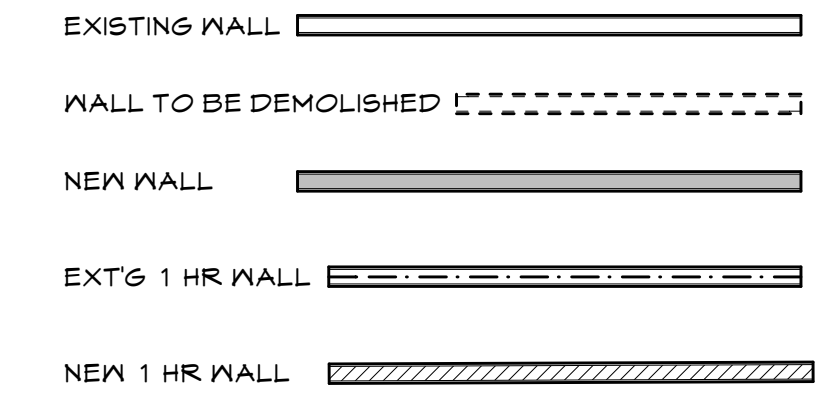
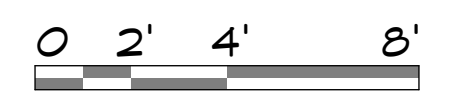
1. VERIFY ALL DIMENSIONS IN THE FIELD. REPORT ALL DISCREPANCIES TO ARCHITECT PRIOR TO COMMENCEMENT WITH WORK.
2. NOTED DIMENSIONS TAKE PRECEDENT OVER SCALED DIMENSIONS. LARGE DETAILS TAKE PRECEDENT OVER SMALL SCALED DETAILS.
3. ALL NEW CONSTRUCTION DIMENSIONS ARE ROUGH OPENINGS UNLESS NOTED OTHERWISE. DIMENSIONS TO EXISTING WALL CONSTRUCTION ARE TO FINISH SURFACE.
4. PROVIDE SOLID BLOCKING FOR ALL CABINETS AND ACCESSORIES.

GENERAL LEGEND



ROOM FINISH LEGEND

FLOORING MATERIAL FIRST NO. OF 4	BASEBOARD MATERIAL SECOND NO. OF 4	WALL FINISH THIRD NO. OF 4
0 EXISTING TO REMAIN	0 EXISTING TO REMAIN	0 EXISTING TO REMAIN
1 CARPET	1 VINYL	1 PAINT
2 TILE	2 TILE	2 TILE
3 VCT		3 PAINT
4 RUBBER SHEET GOODS - 8 MM		3 PAINT



WOODARD & CURRAN
GARDEN LEVEL RENOVATIONS
PORTLAND, MAINE
41 HUTCHINS DRIVE

LICENSED ARCHITECT
ANNE E. CALLENDER
No. 1861
STATE OF MAINE

WHIPPLE - CALLENDER ARCHITECTS

PO BOX 1276
PORTLAND, ME 04104
P 207.715.2616
F 207.715.9631
www.whipplecallender.com

DATE	DESCRIPTION
03 13 12	ISSUED FOR REVIEW & PERMITTING
04 04 12	ELECTRICAL & FIRE RATING UPDATES
04 05 12	MEETINGS ROOM REVISIONS PER CITY
04 13 12	REVISIONS TO BUILDING 2 1 ELEC FIXTURE
04 18 12	REVISIONS TO FIRE RATED CEILING AREA
05 14 12	REVISIONS TO PLAN - BLDG 3 FITNESS RM
05 16 12	REVISIONS TO MEETINGS ROOM LIGHTING

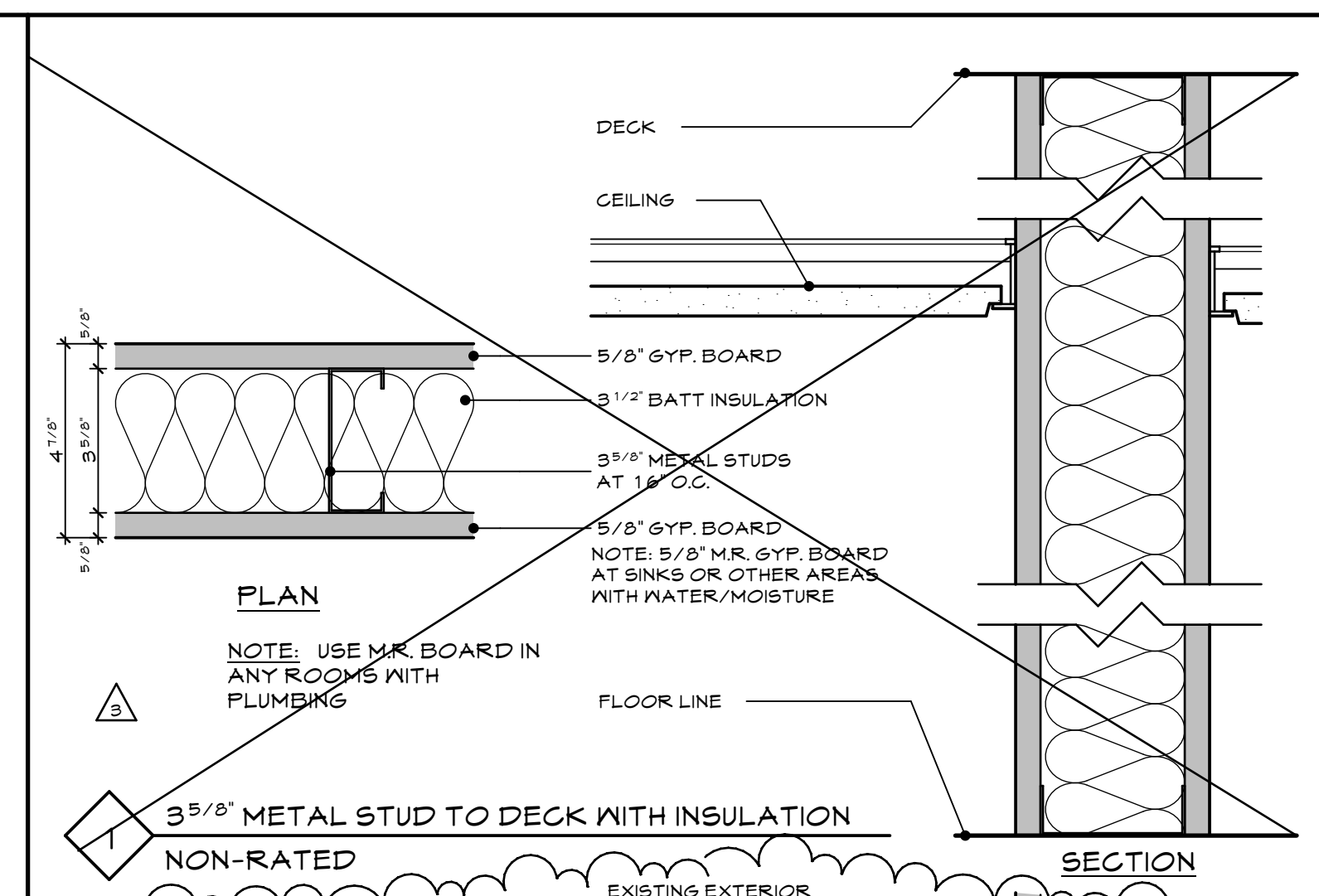
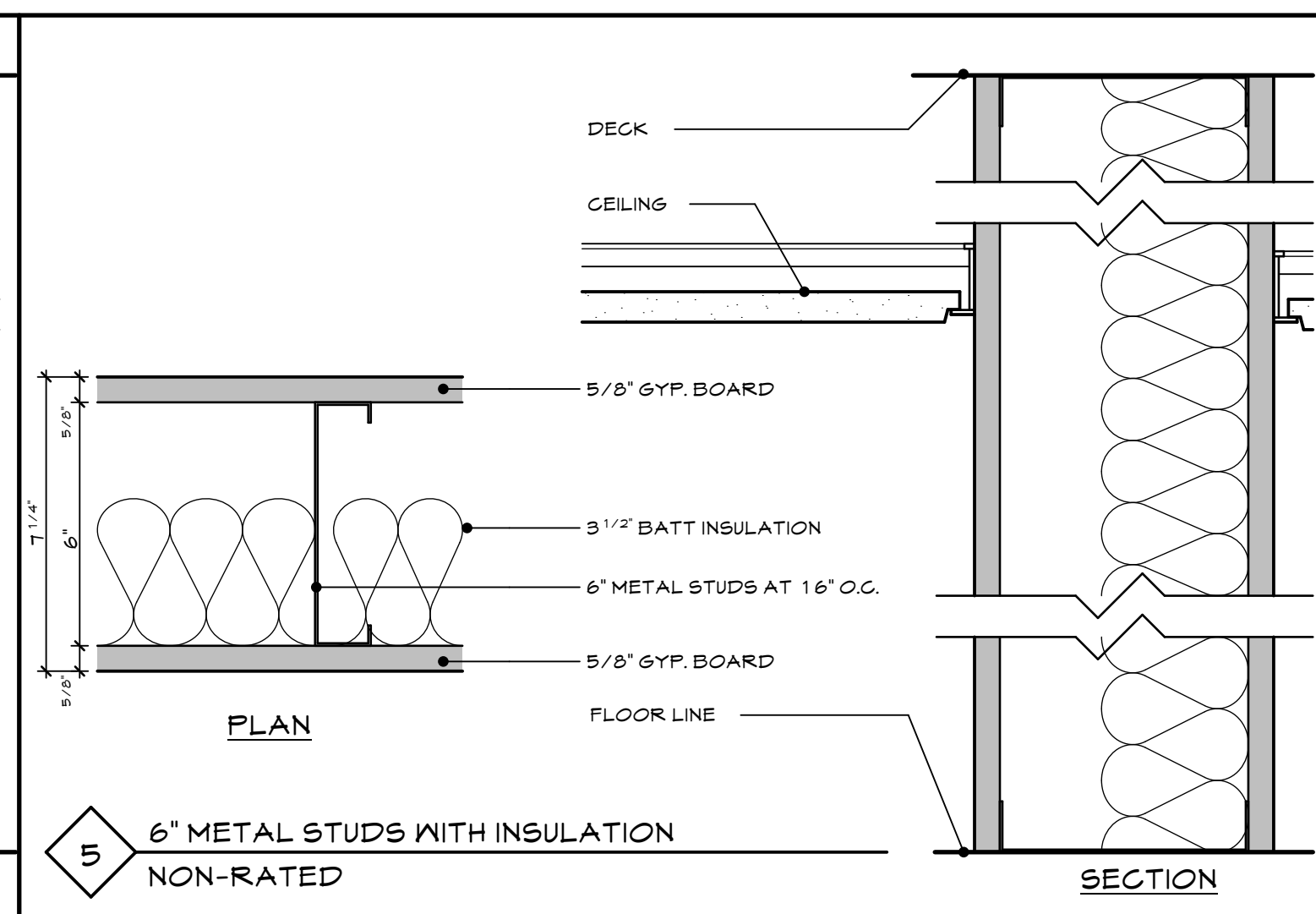
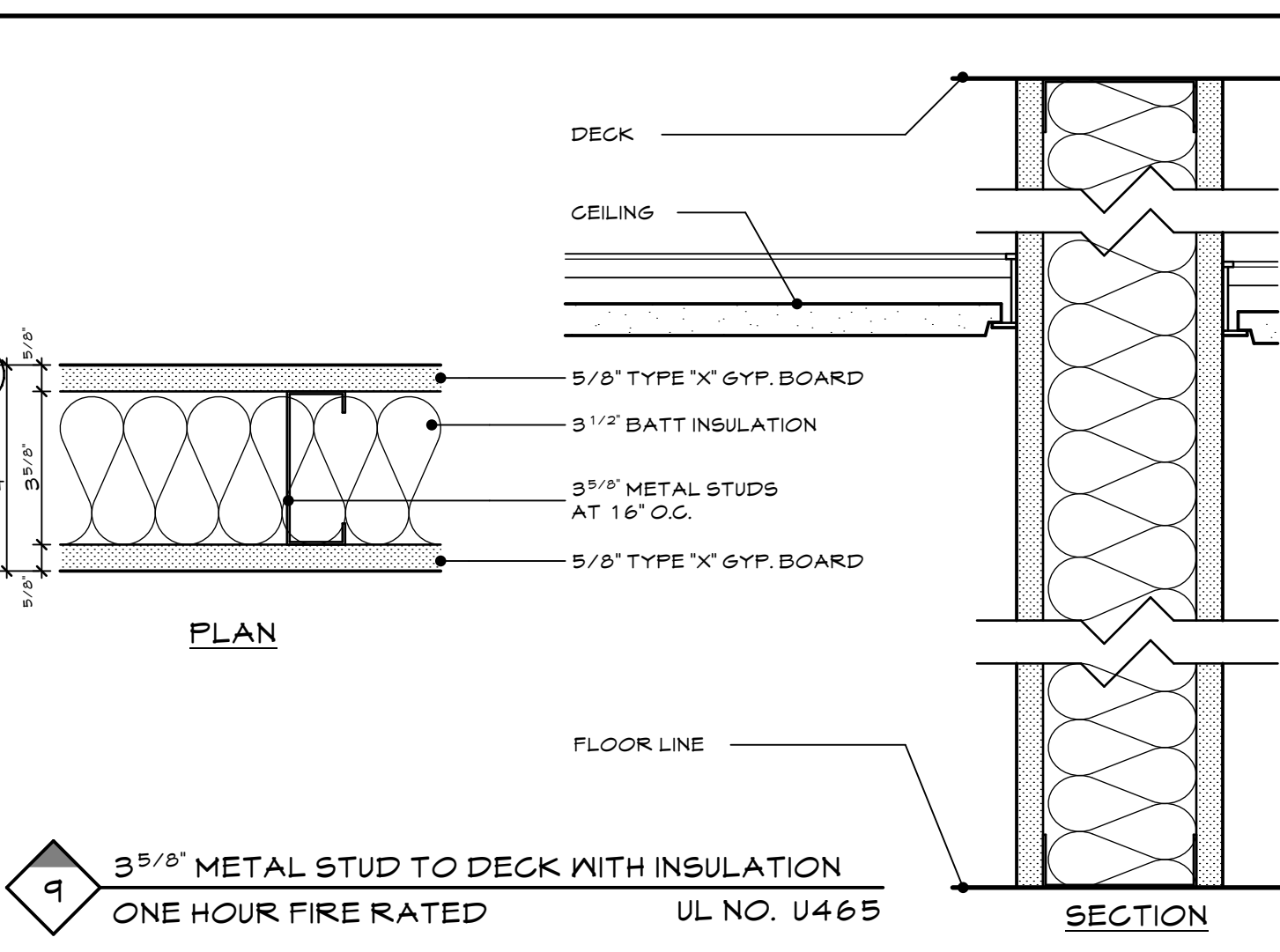
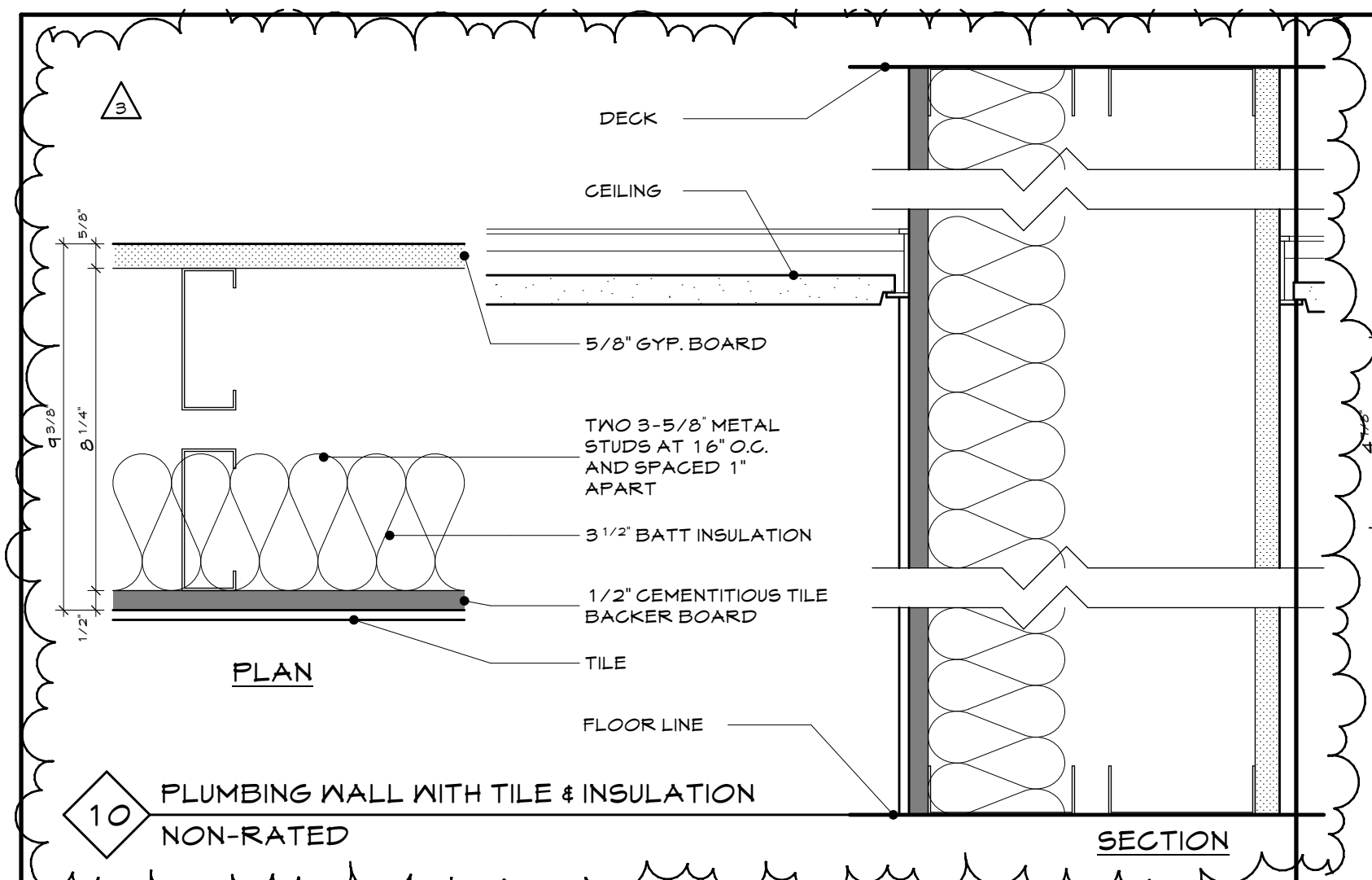
DATE: 18 MAY 12
CHECKED BY: AEC
DRAWN BY: JRP
JOB: 11-WCO
SHEET TITLE: GARDEN LEVEL - BUILDING 2
SCALE: 1/4" = 1'-0"

A1.3

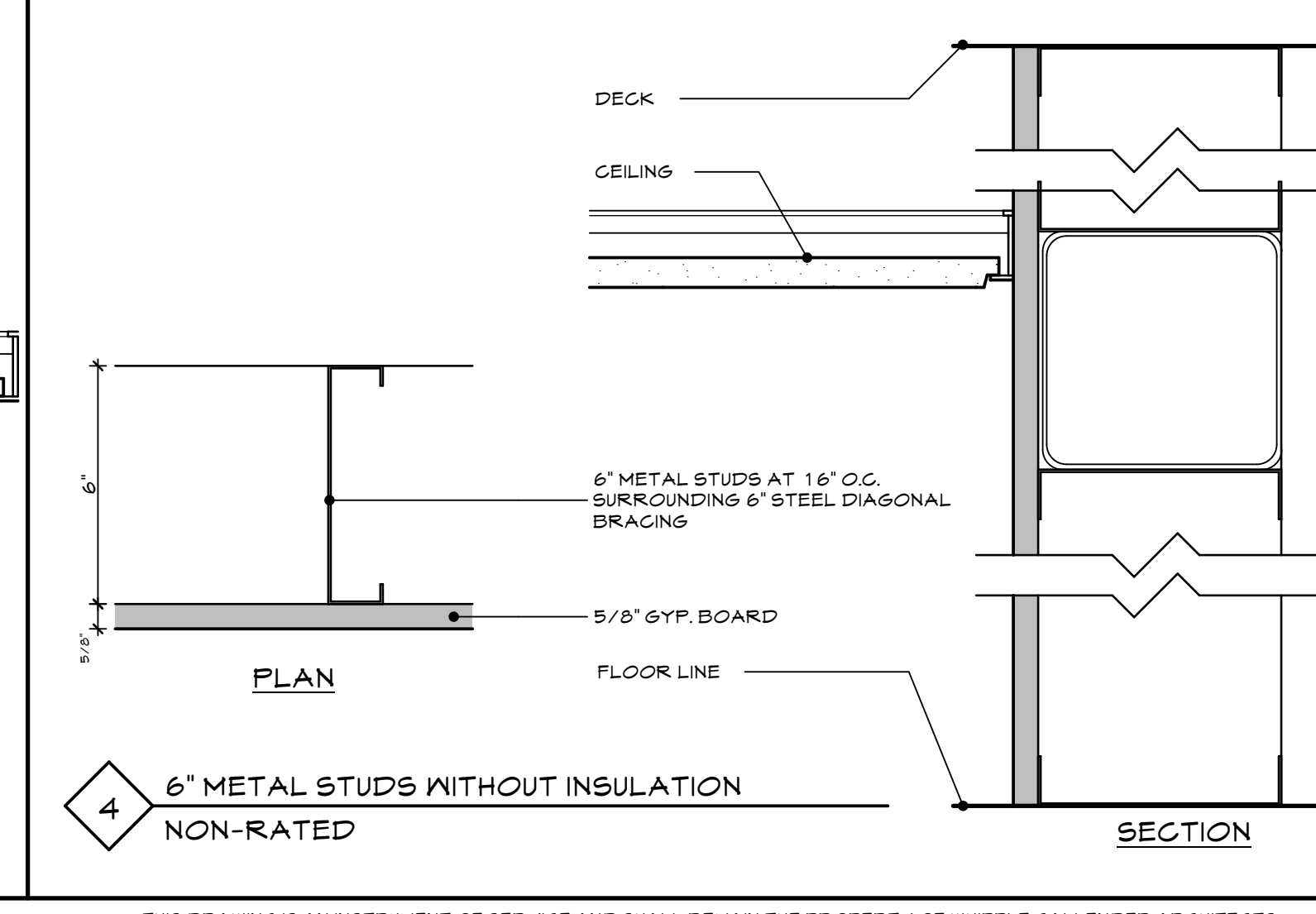
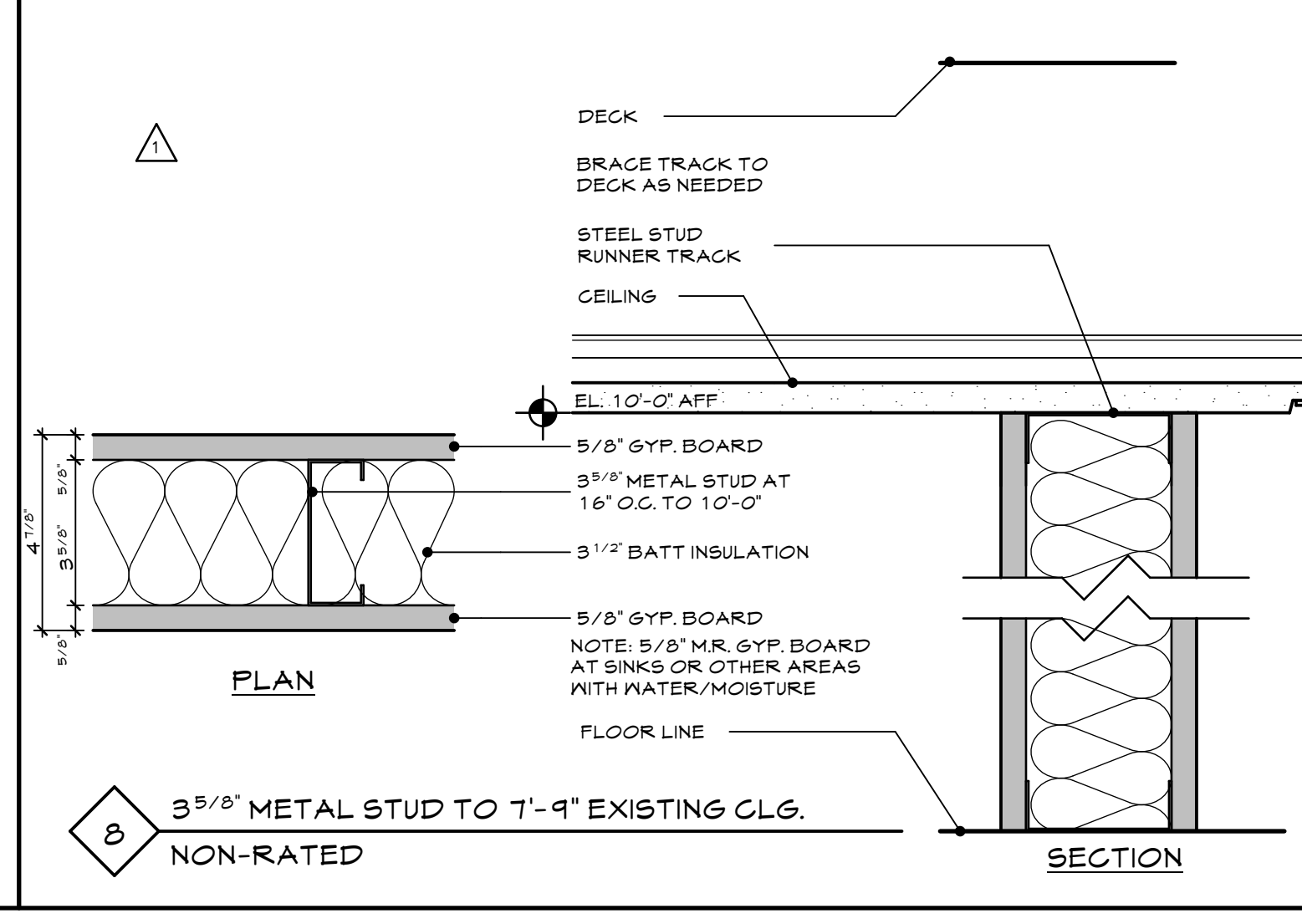
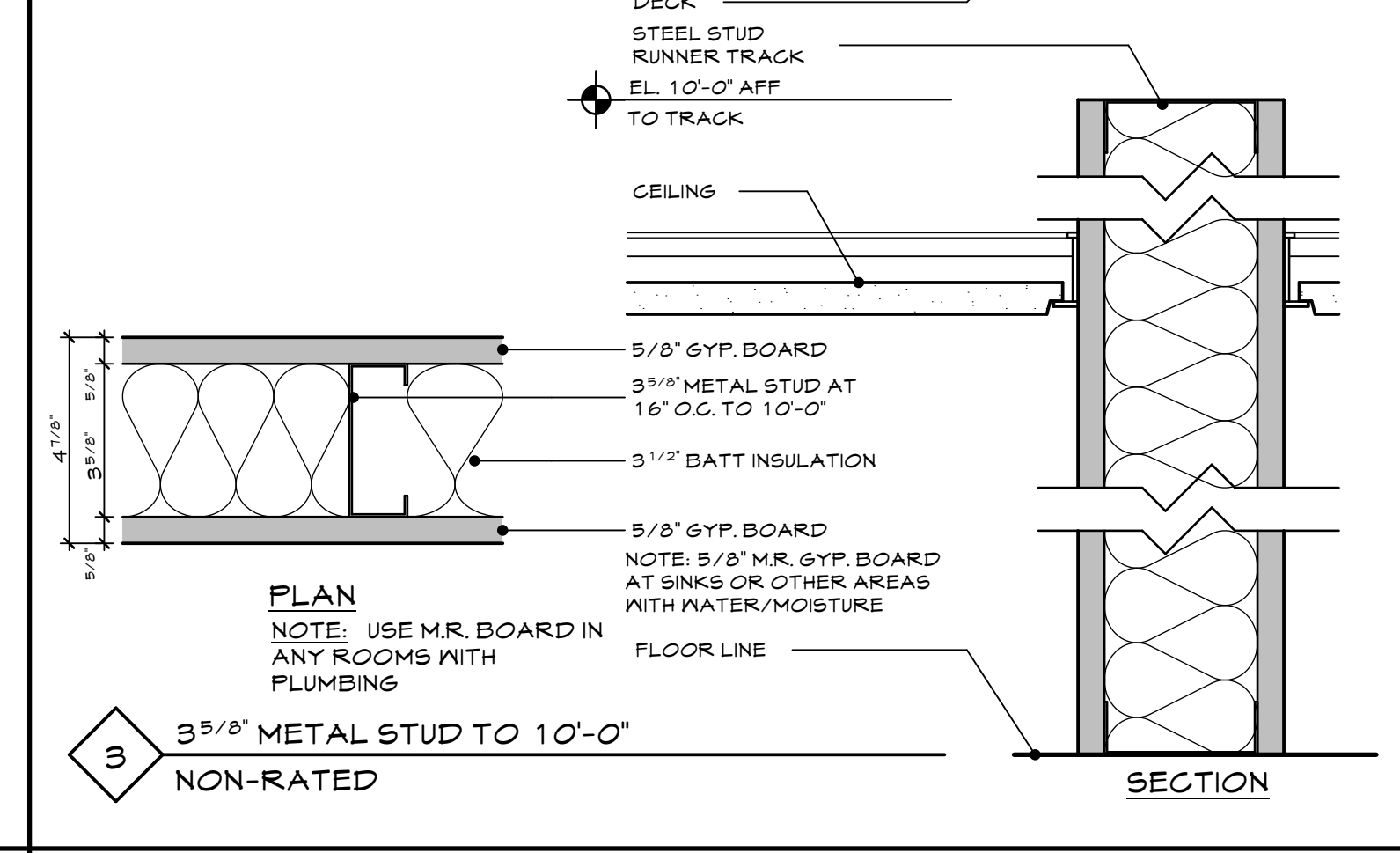
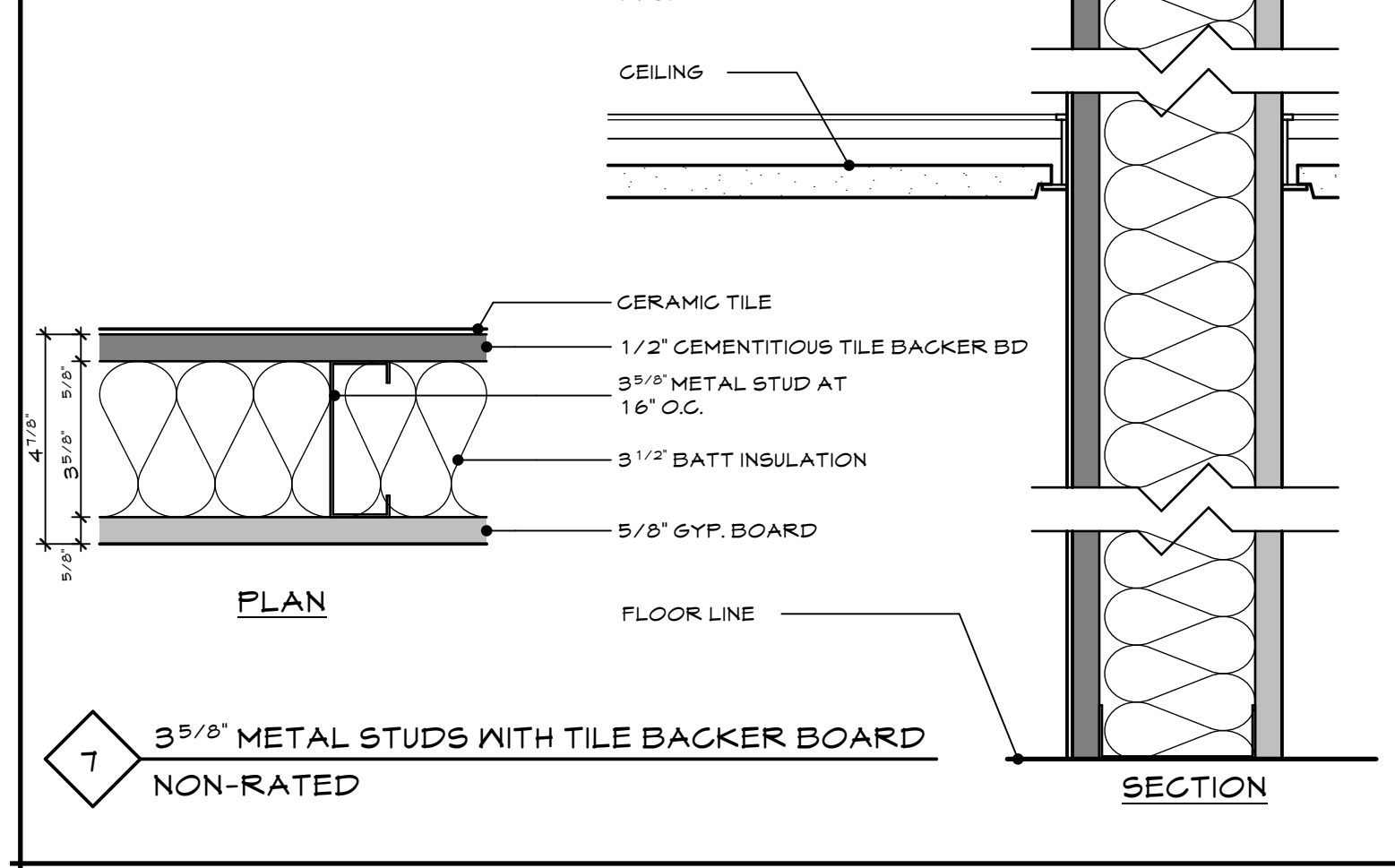
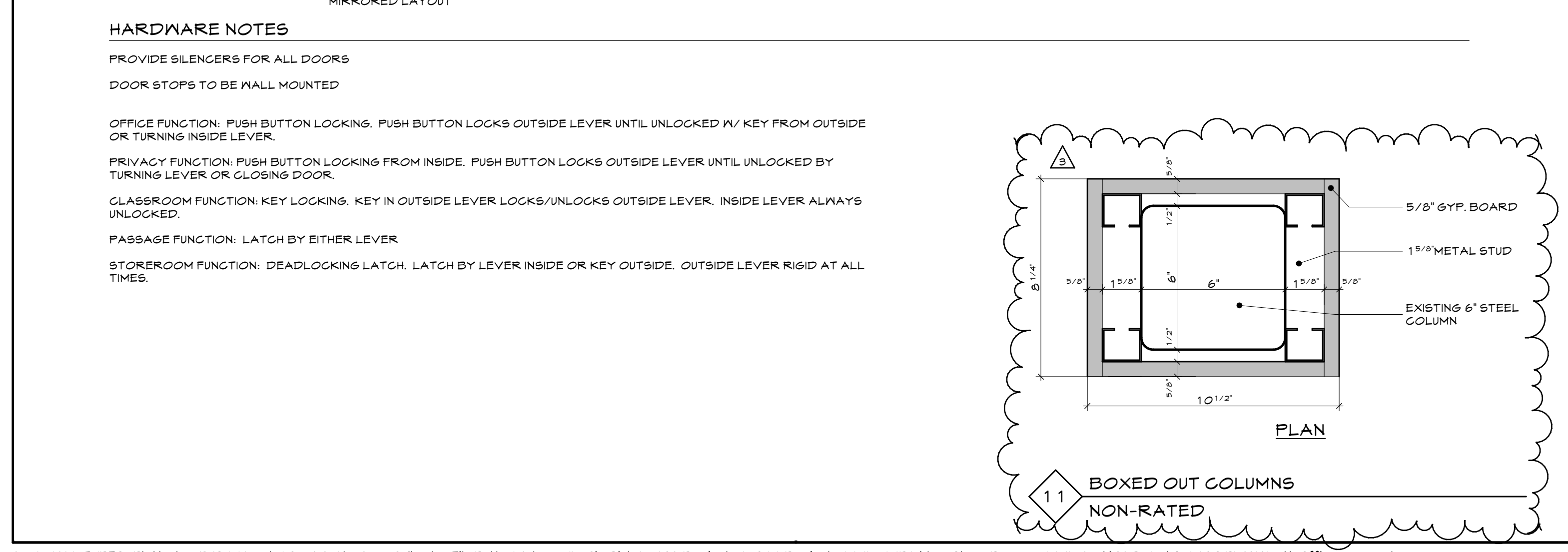
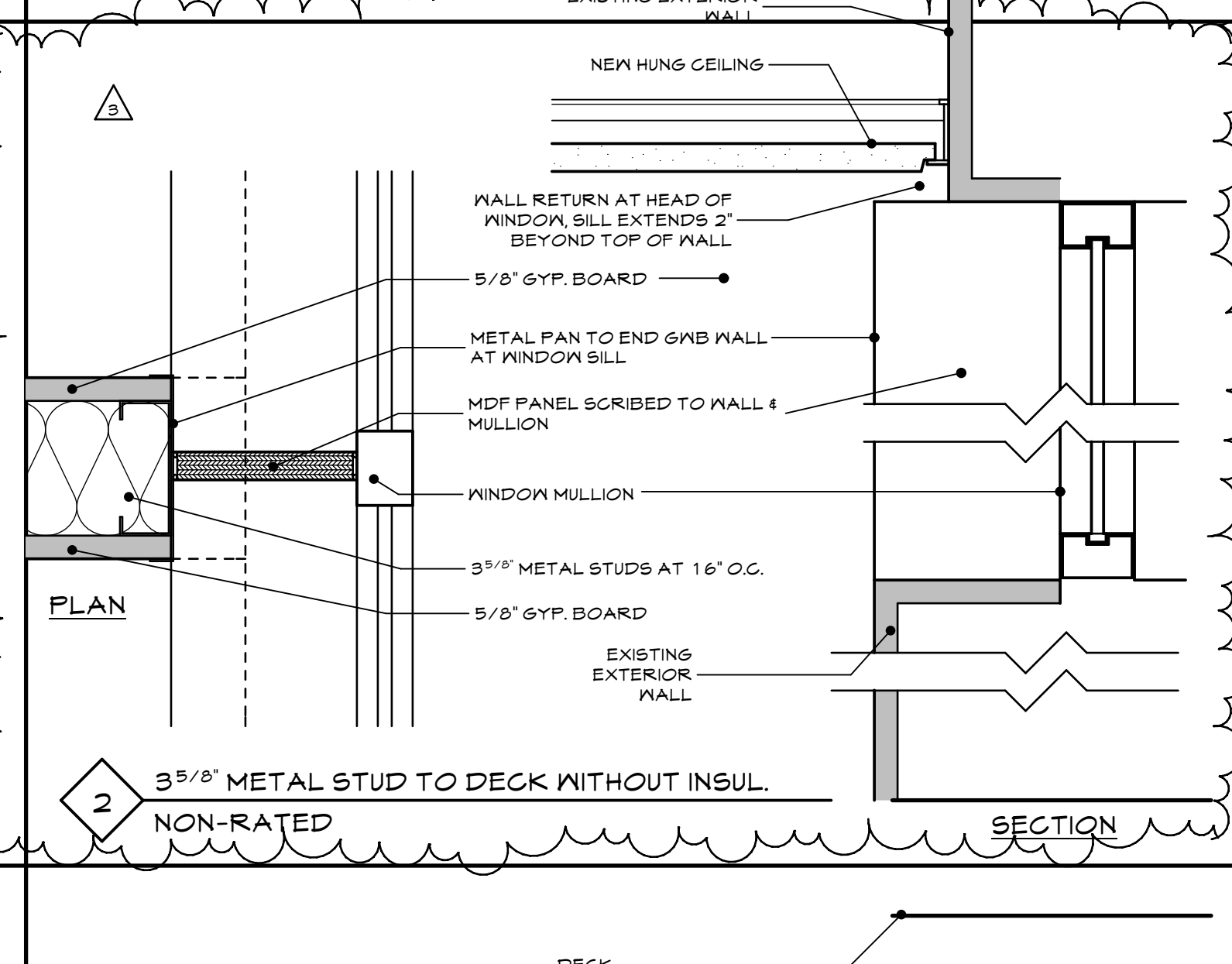
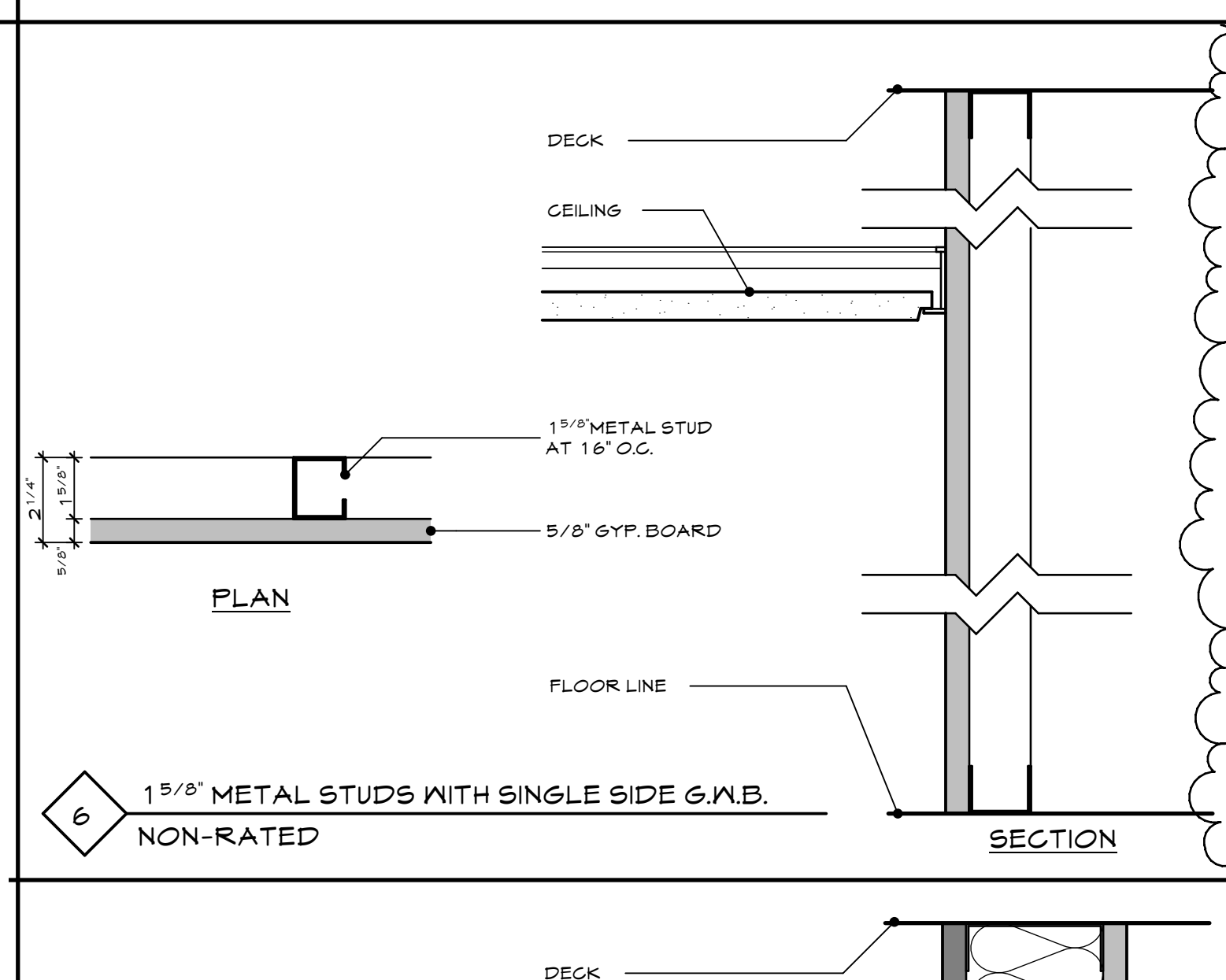
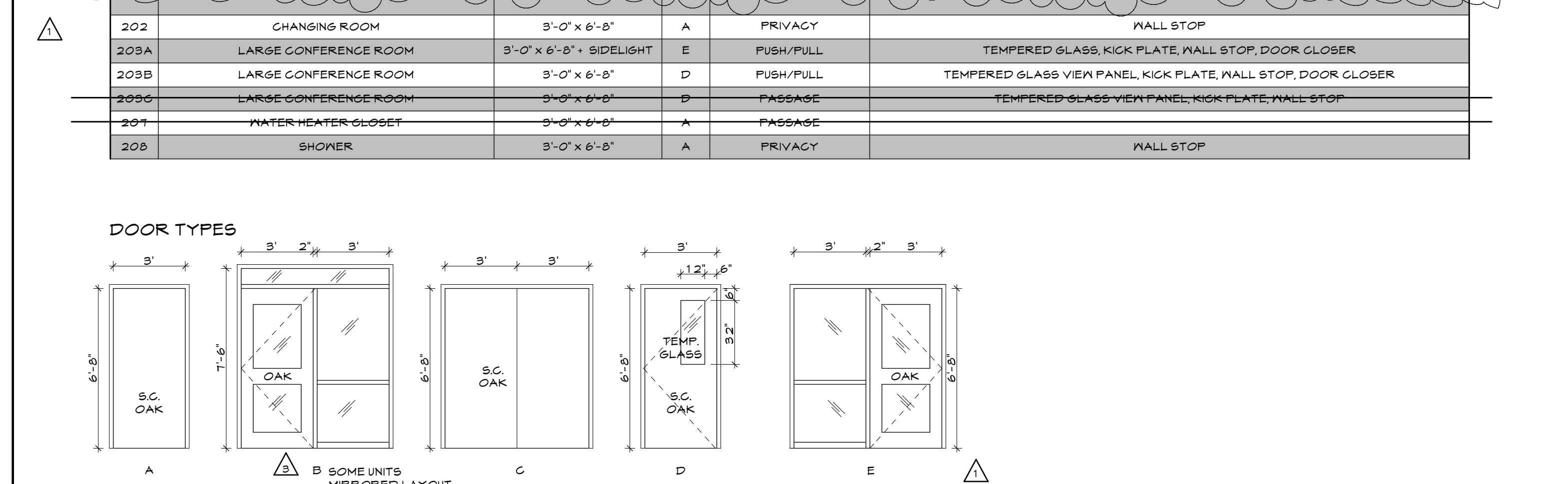
BUILDING 2 : 7,563 SF

1 GARDEN LEVEL PLAN - BUILDING 2
A1.3 SCALE: 1/4" = 1'-0"

THIS DRAWING IS AN INSTRUMENT OF SERVICE AND SHALL REMAIN THE PROPERTY OF WHIPPLE CALLENDER ARCHITECTS. IT SHALL NOT BE USED FOR ANY OTHER PURPOSE THAT FOR WHICH IT IS SPECIFICALLY FURNISHED.



DOOR SCHEDULE					
MARK	LOCATION	UNIT SIZE	TYPE	HARDWARE FUNCTION	NOTES/REMARKS
102	RECYCLING	3'-0" x 6'-8"	A	PASSAGE	45 MIN. DOOR, DOOR CLOSER, KICK PLATE, WALL STOP
104	OFFICE 1	3'-0" x 6'-8" + TRANSOM 4 SIDELIGHT	B	PASSAGE	TEMPERED GLASS, WALL STOP
105	OFFICE 1	3'-0" x 6'-8" + TRANSOM 4 SIDELIGHT	B	PASSAGE	TEMPERED GLASS, WALL STOP
106	OFFICE 2	3'-0" x 6'-8" + TRANSOM 4 SIDELIGHT	B	PASSAGE	TEMPERED GLASS, WALL STOP
110	OFFICE 8	3'-0" x 6'-8" + TRANSOM 4 SIDELIGHT	B	PASSAGE	TEMPERED GLASS, WALL STOP
111	OFFICE 9	3'-0" x 6'-8" + TRANSOM 4 SIDELIGHT	B	PASSAGE	TEMPERED GLASS, WALL STOP
114	OFFICE 10	3'-0" x 6'-8" + TRANSOM 4 SIDELIGHT	B	PASSAGE	TEMPERED GLASS, WALL STOP
116	JANITOR	3'-0" x 6'-8"	A	STORE ROOM	45 MIN. DOOR, DOOR CLOSER
117	MENS	3'-0" x 6'-8"	A	PUSH/PULL	KICK PLATE, DOOR CLOSER, WALL STOP
118	WOMENS	3'-0" x 6'-8"	A	PUSH/PULL	KICK PLATE, DOOR CLOSER, WALL STOP
121	OFFICE 6	3'-0" x 6'-8" + TRANSOM 4 SIDELIGHT	B	PASSAGE	TEMPERED GLASS, WALL STOP
122	OFFICE 5	3'-0" x 6'-8" + TRANSOM 4 SIDELIGHT	B	PASSAGE	TEMPERED GLASS, WALL STOP
124	CUBICLE AREA TO CENTRAL HALLWAY	6'-0" x 6'-8"	C	PASSAGE	45 MIN. DOOR, DOOR CLOSERS, ELEC. HOLD OPEN, KICK PLATES, WALL STOPS
125	STORAGE	3'-0" x 6'-8"	A	STORE ROOM	45 MIN. DOOR, DOOR CLOSER, KICK PLATE, WALL STOP
126	OFFICE 4	3'-0" x 6'-8" + TRANSOM 4 SIDELIGHT	B	PASSAGE	TEMPERED GLASS, WALL STOP
127	OFFICE 3	3'-0" x 6'-8" + TRANSOM 4 SIDELIGHT	B	PASSAGE	TEMPERED GLASS, WALL STOP
128A	FUTURE OFFICE SPACE	3'-0" x 6'-8"	A	CLASSROOM	45 MIN. DOOR, DOOR CLOSER, KICK PLATE, WALL STOP
128B	FUTURE OFFICE SPACE	3'-0" x 6'-8"	A	CLASSROOM	45 MIN. DOOR, DOOR CLOSER, KICK PLATE
202	CHANGING ROOM	3'-0" x 6'-8"	A	PRIVACY	WALL STOP
202A	LARGE CONFERENCE ROOM	3'-0" x 6'-8" + SIDELIGHT	E	PUSH/PULL	TEMPERED GLASS, KICK PLATE, WALL STOP, DOOR CLOSER
203B	LARGE CONFERENCE ROOM	3'-0" x 6'-8"	D	PUSH/PULL	TEMPERED GLASS VIEW PANEL, KICK PLATE, WALL STOP, DOOR CLOSER
203C	LARGE CONFERENCE ROOM	3'-0" x 6'-8"	D	PASSAGE	TEMPERED GLASS VIEW PANEL, KICK PLATE, WALL STOP
207	WATER HEATER CLOSET	3'-0" x 6'-8"	A	PASSAGE	
208	SHOWER	3'-0" x 6'-8"	A	PRIVACY	WALL STOP



WOODARD & CURRAN
PORTLAND, MAINE
41 HUTCHINS DRIVE

LICENSED ARCHITECT
ANN E. CALLENDER
No. 1861
STATE OF MAINE

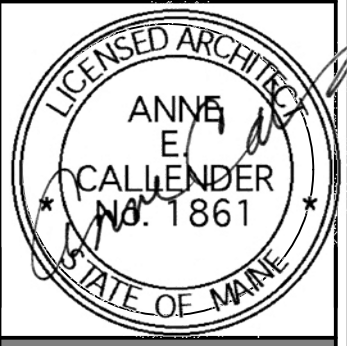
WHIPPLE - CALLENDER ARCHITECTS

136 PLEASANT AVE.
PORTLAND, ME 04103
P 207.175.2646
F 207.175.9631
www.whipplecallender.com

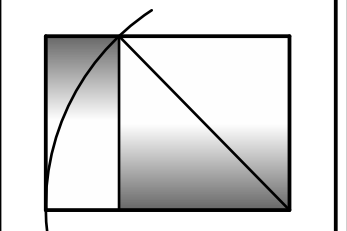
DATE	DESCRIPTION
03 13 12	ISSUED FOR REVIEW & PERMITTING
04 04 12	ELECTRICAL & PERMITTING UPDATES
04 05 12	MEETINGS ROOM REVISIONS PER CITY
04 13 12	REVISIONS TO BUILDING 2 I.E.L.C. FIXTURE
04 18 12	REVISIONS TO FIRE RATED CEILING AREA
05 14 12	REVISIONS TO PLAN - BLDG 3 FITNESS RM
05 16 12	REVISIONS TO MEETINGS ROOM LIGHTING

DATE: 18 MAY 2012
CHECKED BY: AEC
DRAWN BY: JRP
JOB: 11-WCO
SHEET TITLE: WALL TYPES DOOR SCHEDULE HARDWARE NOTES
3" x 11" 0"

A2.1



WHIPPLE - CALLENDER ARCHITECTS



PO BOX 1276
PORTLAND, ME 04104
P 207.715.2616
F 207.715.9631
www.whipplecallender.com

DATE	DESCRIPTION
03/13/12	ISSUED FOR REVIEW & PERMITS
04/04/12	ELECTRICAL & PERMITS UPDATES
04/05/12	MEETINGS ROOM REVISIONS PER CITY
04/13/12	REVISIONS TO BUILDING 2 & ELEC FIXTURE F
04/18/12	REVISIONS TO FIRE RATED CEILING AREA
05/14/12	REVISIONS TO PLAN - BLDG 3 FITNESS RM
05/16/12	REVISIONS TO MEETINGS ROOM LIGHTING

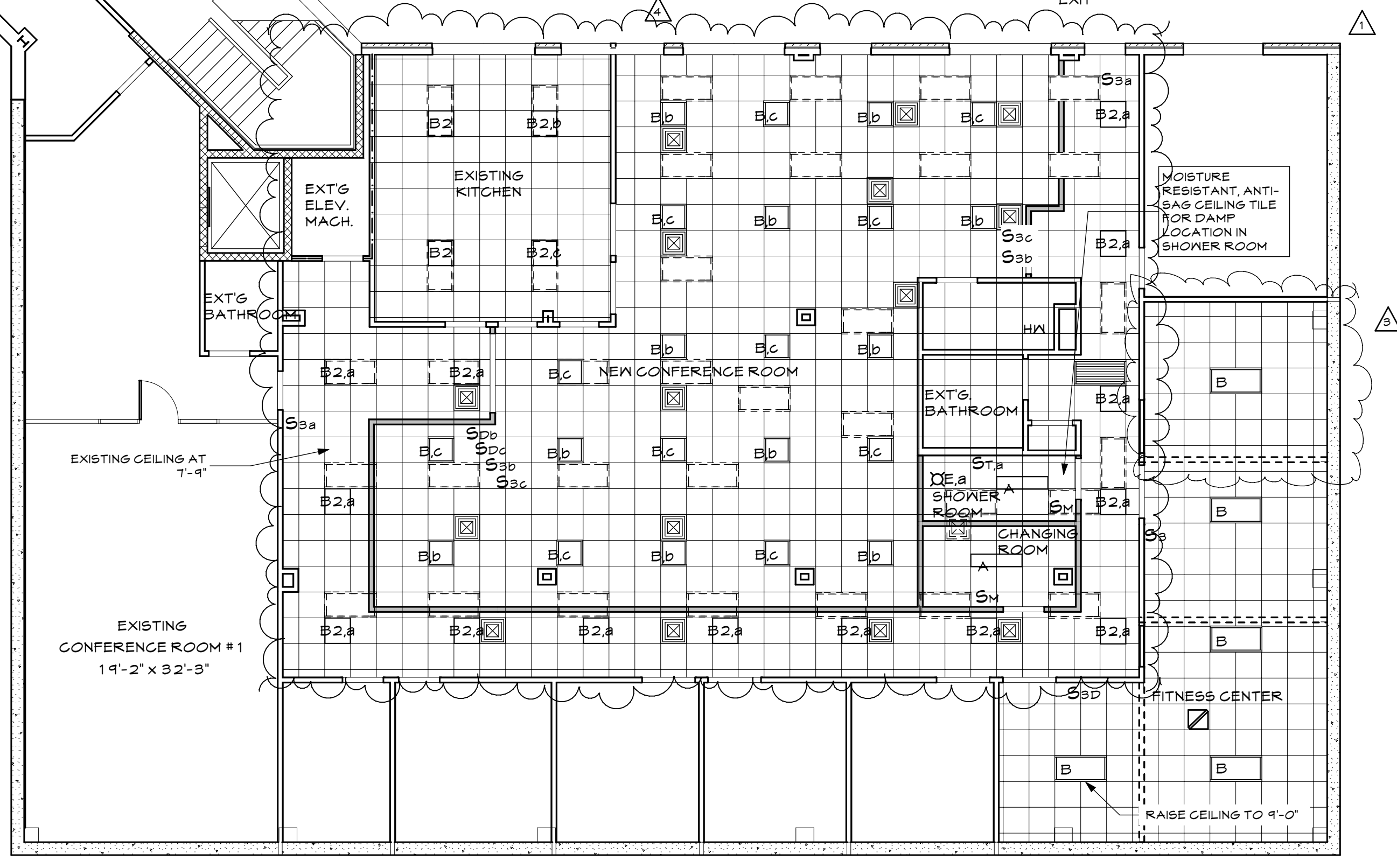
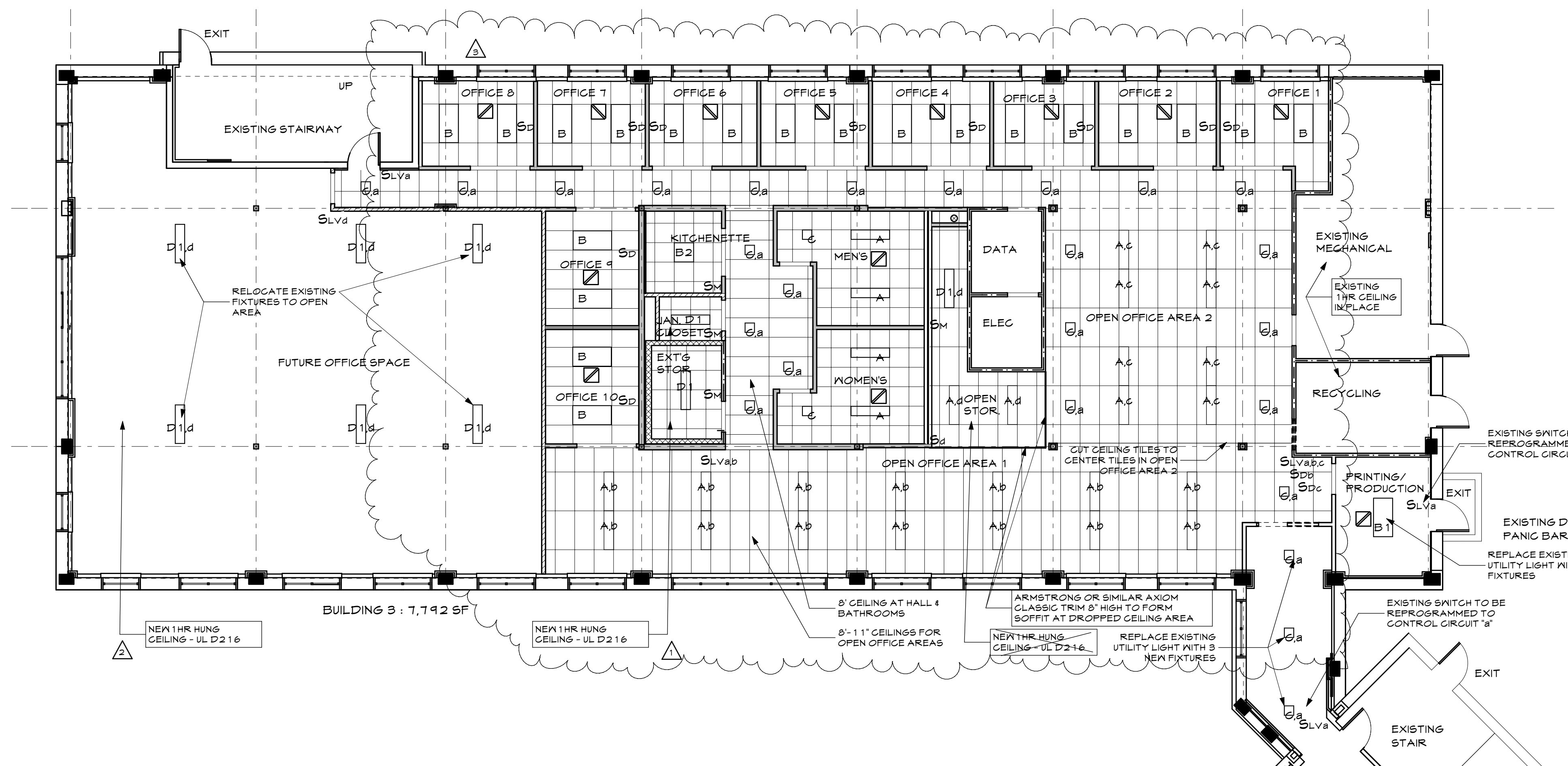
DATE: 18 MAY 12
CHECKED BY: AEC
DRAWN BY: JRP
JOB: 11-WCO
SHEET TITLE: GARDEN LEVEL REFLECTED CEILING PLANS BUILDINGS 2 AND 3
SCALE: 1/8" = 1'-0"

A3.1

LIGHTING LEGEND

- A 1X4 LED LAY-IN
- B 2X4 LED - LAY-IN
- B1 2X4 LED - SURFACE MOUNTED
- B2 2X2 LED - LAY-IN
- C 1X1 LED
- D1 EXISTING SINGLE BULB FLUORESCENT FIXTURE TO BE REUSED (10 AVAILABLE - (2) 8' FIXTURES)
- DE.a WET LOCATION LED DOWNLIGHT
- △ WALL SCONCE MOUNT LIGHT 6'-2" TO CENTER A.F.F.
- SD 0 - 10 V DIMMER SWITCH - MTD CL UP 4'-0"
- SM WALL MOUNTED OCCUPANCY SENSOR - MTD CL UP 4'-0"
- S3 THREE-WAY SWITCH - MTD CL UP 4'-0"
- S4 FOUR-WAY SWITCH - MTD CL UP 4'-0"
- SLV LOW VOLTAGE SWITCH - MTD CL UP 4'-0"
- S SINGLE POLE SWITCH - MTD CL UP 4'-0"
- ST TIMER SWITCH - MTD CL UP 4'-0"
- CEILING MOUNTED OCCUPANCY SENSOR
- EXISTING HVAC DIFFUSER
- EXISTING RETURN GRILL
- EXISTING LIGHTING TO BE REMOVED

NOTE:
ALL WORK TO BE COMPLETED TO N.E.C. CODES AND STANDARDS.
CIRCUITRY TO FOLLOW / IMITATE WORK COMPLETED ON FLOORS 2 & 3 OF BUILDING 3
REVIEW SWITCHING AND LOW VOLTAGE LIGHTING CONTROL SYSTEM WITH OWNER'S REP
LOWER CASE NOTATIONS ON SWITCHES ARE FOR SWITCHING GROUPS



LIGHTING FIXTURE SCHEDULE

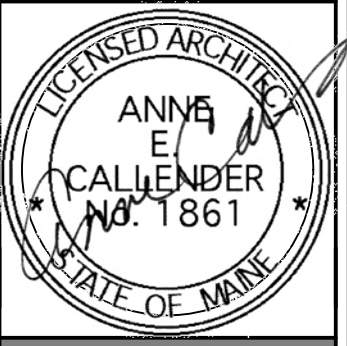
ALL FIXTURES SHALL BE FURNISHED COMPLETE WITH ALL HARDWARE, LAMPS, HANGERS, FITTINGS, ETC., FOR A COMPLETE AND PROPER INSTALLATION.

TYPE	MANUFACTURER	CATALOG NUMBER	LAMP TYPE	LAMP WATT	LAMP NO.	VOLTAGE	MTG.	BALLAST FACTOR	REMARKS/RECOMMENDATIONS
1x4' RECESSED LED TROFFER W/ ANGLED REFLECTOR AND ROUND CENTER OPTIC									
A	FINELITE	HPR-A-1X4-RCO-LED-3500K-120V-SG-C1	LED	34.6	NA	120	REG	NA	FIXTURES FURNISHED BY WOODARD & CURRAN.
2x4' RECESSED LED TROFFER W/ ANGLED REFLECTOR									
B	FINELITE	HPR-A-2X4-DCO-LED-3500K-120V-SG-C1	LED	64.6	NA	120	REG	NA	FIXTURES FURNISHED BY WOODARD & CURRAN.
2x4' SURFACE MOUNTED LED TROFFER W/ ANGLED REFLECTOR									
B1	FINELITE	HPR-A-2X4-DCO-LED-3500K-120V-SG-SM	LED	64.6	NA	120	SUR	NA	FIXTURES FURNISHED BY WOODARD & CURRAN.
2x2' RECESSED LED TROFFER W/ ANGLED REFLECTOR									
B2	FINELITE	HPR-A-2X2-DCO-LED-3500K-120V-SG-C1	LED	37.2	NA	120	REG	NA	FIXTURES FURNISHED BY WOODARD & CURRAN.
1'x1' RECESSED LED TROFFER W/ ANGLED REFLECTOR									
C	FINELITE	HPR-A-1X1-DCO-LED-3500K-120V-SG-C1	LED	19.2	NA	120	REG	NA	FIXTURES FURNISHED BY WOODARD & CURRAN.
D1	EXISTING SINGLE LAMP UTILITY STRIP LIGHT TO BE RELOCATED.								
E	LED WET LOCATION RECESSED DOWNLIGHT								
	FRESCOLITE	D2LEDHDM-2D9LED30K8WT	LED		NA	120	REG	NA	FIXTURE PROVIDED BY THE CONTRACTOR. PROVIDE WITH T-BAR MOUNTING KIT.
INTERIOR WALL SCONCE									
F	SHAPER	635-PSH-14-CFL/2/13-120-NA	CFL	15	2	120	REG		FIXTURES PROVIDED BY THE CONTRACTOR. WALL MOUNT FIXTURE CENTERLINE UP 6'-2" A.F.F.
EMERGENCY LIGHT W/ TEST SWITCH AND AC ON LIGHT									
BATT	DUAL-LITE	L265-12V	MR16	10		120	WALL		PROVIDE WITH NUMBER OF HEADS AS INDICATED ON THE DRAWINGS.
LED EXIT SIGN W/ TEST SWITCH AND AC ON LIGHT									
	MATCH EXISTING	MATCH EXISTING				120	WALL		PROVIDE WITH FACES & ARROWS AS INDICATED ON THE DRAWINGS. EXIT SIGNS SHALL MATCH THE EXISTING LED EXIT SIGNS USED ON THE FIRST & SECOND FLOORS OF BLDG. 3.

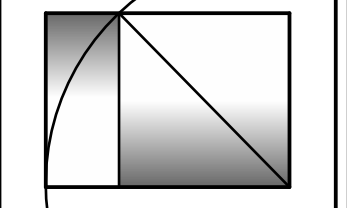
BUILDING 2 : 7,563 SF

1 GARDEN LEVEL CEILING PLAN
A3.1 SCALE: 1/8" = 1'-0"

THIS DRAWING IS AN INSTRUMENT OF SERVICE AND SHALL REMAIN THE PROPERTY OF WHIPPLE CALLENDER ARCHITECTS. IT SHALL NOT BE USED FOR ANY OTHER PURPOSE THAT FOR WHICH IT IS SPECIFICALLY FURNISHED.



WHIPPLE -
CALLENDER
ARCHITECTS

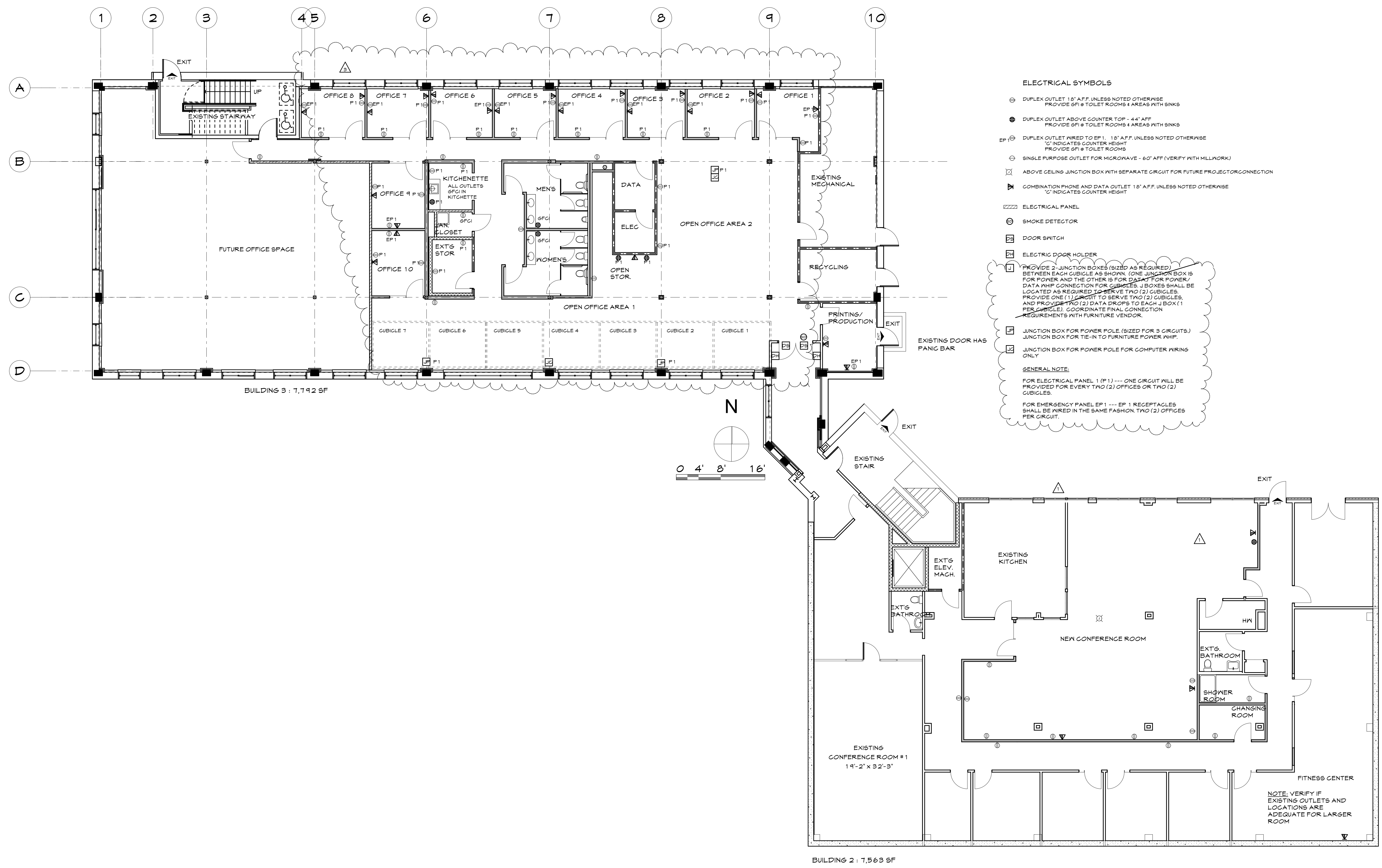


PO BOX 1276
PORTLAND, ME 04104
P 207.775.2616
F 207.775.9631
www.whipplecallender.com

DATE	DESCRIPTION
03/13/12	ISSUED FOR REVIEW & PERMITTING
04/04/12	ELECTRICAL & FIRE RATING UPDATES
04/05/12	MEETING ROOM REVISIONS PER CITY
04/13/12	REVISIONS TO BUILDING 2 & 1 ELEG. FIXTURE F
04/18/12	REVISIONS TO FIRE RATED CEILING AREA
05/14/12	REVISIONS TO PLAN - BUILDING 3 FITNESS RM
05/16/12	REVISIONS TO MEETING ROOM LIGHTING

DATE:	18 MAY 12
CHECKED BY:	AEC
DRAWN BY:	JRP
JOB:	11-WCO
SHEET TITLE:	POWER LAYOUT GARDEN LEVEL
SCALE:	1/8" = 1'-0"

E1.1



ELECTRICAL SYMBOLS

- ⊕ DUPLEX OUTLET 18" A.F.F. UNLESS NOTED OTHERWISE
PROVIDE GFI @ TOILET ROOMS & AREAS WITH SINKS
- ⊕ DUPLEX OUTLET ABOVE COUNTER TOP - 44" A.F.F.
PROVIDE GFI @ TOILET ROOMS & AREAS WITH SINKS
- ⊕ DUPLEX OUTLET W/RED TO EP 1. 18" A.F.F. UNLESS NOTED OTHERWISE
'C' INDICATES COUNTER HEIGHT
PROVIDE GFI @ TOILET ROOMS
- ⊕ SINGLE PURPOSE OUTLET FOR MICROWAVE - 60" A.F.F. (VERIFY WITH MILLWORK)
- ⊕ ABOVE CEILING JUNCTION BOX WITH SEPARATE CIRCUIT FOR FUTURE PROJECT OR CONNECTION
- ⊕ COMBINATION PHONE AND DATA OUTLET 18" A.F.F. UNLESS NOTED OTHERWISE
'C' INDICATES COUNTER HEIGHT
- ⊕ ELECTRICAL PANEL
- ⊕ SMOKE DETECTOR
- ⊕ DOOR SWITCH
- ⊕ ELECTRIC DOOR HOLDER
- ⊕ PROVIDE 2 JUNCTION BOXES (SIZED AS REQUIRED) BETWEEN EACH CUBICLE AS SHOWN. (ONE JUNCTION BOX IS FOR POWER AND THE OTHER IS FOR DATA) FOR POWER/ DATA W/HP CONNECTION FOR CUBICLES. J BOXES SHALL BE LOCATED AS REQUIRED TO SERVE TWO (2) CUBICLES. PROVIDE ONE (1) CIRCUIT TO SERVE TWO (2) CUBICLES, AND PROVIDE TWO (2) DATA DROPS TO EACH J BOX (1 PER CUBICLE). COORDINATE FINAL CONNECTION REQUIREMENTS WITH FURNITURE VENDOR.
- ⊕ JUNCTION BOX FOR POWER POLE (SIZED FOR 3 CIRCUITS.) JUNCTION BOX FOR TIE-IN TO FURNITURE POWER W/HP.
- ⊕ JUNCTION BOX FOR POWER POLE FOR COMPUTER WIRING ONLY

GENERAL NOTE:
FOR ELECTRICAL PANEL 1 (P1) --- ONE CIRCUIT WILL BE PROVIDED FOR EVERY TWO (2) OFFICES OR TWO (2) CUBICLES.
FOR EMERGENCY PANEL EP 1 --- EP 1 RECEPTACLES SHALL BE WIRED IN THE SAME FASHION. TWO (2) OFFICES PER CIRCUIT.

POWER LAYOUT PLAN - GARDEN LEVEL
SCALE: 1/8" = 1'-0"

THIS DRAWING IS AN INSTRUMENT OF SERVICE AND SHALL REMAIN THE PROPERTY OF WHIPPLE CALLENDER ARCHITECTS. IT SHALL NOT BE USED FOR ANY OTHER PURPOSE THAT FOR WHICH IT IS SPECIFICALLY FURNISHED.