

Job: CC1  
 Drawn By: CMW  
 Revision:

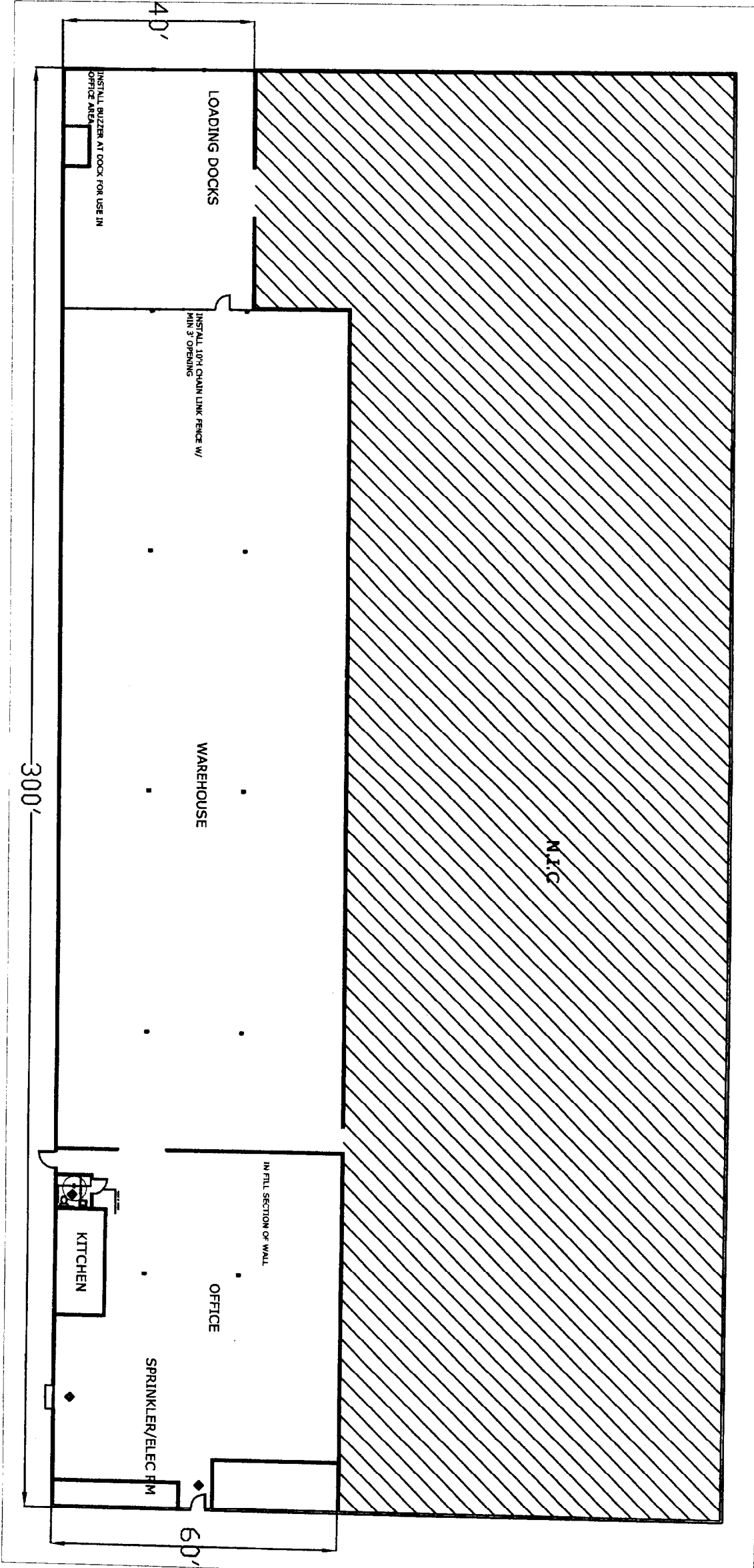
**STURBRIDGE YANKEE WORKSHOP**  
 90 BLUEBERRY RD  
 PORTLAND, MAINE

THE INFORMATION CONTAINED HEREIN IS CONFIDENTIAL AND PROPRIETARY, AND MAY NOT BE DISCLOSED OR USED IN ANY WAY WITHOUT THE EXPRESSED WRITTEN PERMISSION OF FINE BROOK CORPORATION.  
 FINE BROOK CORPORATION  
 TEL: (207) 488-7847 FAX: (207) 488-7848

**PROPOSED PLAN**

- GENERAL NOTES:
1. CURBCE AREA TO BE REPAINTED, COLOR TBD
  2. FIBERGLASS SECURITY SYSTEM SO THAT TENANT'S SPACE HAS SEPARATE KEYPAD.
  3. REPLACE BROKEN/MISSING CEILING TILES WITH 2 X 4 MELT AWAY TILES.

PROPOSED PLAN  
 3 MAR 04  
 VTS  
 A-1



**PROPOSED PLAN**

- GENERAL NOTES:**
1. OFFICE AREA TO BE REPAINTED, COLOR TBD
  2. REZONE SECURITY SYSTEM SO THAT TENANT'S SPACE HAS SEPARATE KEYPAD.
  3. REPLACE BROKEN/MISSING CEILING TILES WITH 2 X 4 MELT AWAY TILES.

Job <b>CC1</b>	Owner By <b>CMW</b>	Revision 	Rev Date 	<b>STURBRIDGE YANKEE WORKSHOP</b> 90 BLUEBERRY RD PORTLAND, MAINE	Customer 
THE INFORMATION CONTAINED HEREIN IS CONFIDENTIAL AND PROPRIETARY, AND MAY NOT BE DISCLOSED OR USED IN ANY WAY WITHOUT THE EXPRESSED WRITTEN PERMISSION OF PINE BROOK CORPORATION.					
<b>PINE BROOK CORPORATION</b>					
57 RTE. 238, Kittery, Maine 03904 TEL. (207) 439-7547 FAX. (207) 439-8566					
<b>PROPOSED PLAN</b>					
Date <b>8 MAR 04</b> Scale <b>NTS</b> Page <b>A-1</b>					



Job: CCI

Drawn By: CMW

Revision:

Customer:  
**STURBRIDGE YANKEE WORKSHOP**  
 90 BLUEBERRY RD PORTLAND, MAINE

THE INFORMATION CONTAINED HEREIN IS CONFIDENTIAL AND PROPRIETARY, AND MAY NOT BE DISCLOSED OR USED IN ANY WAY WITHOUT THE EXPRESSED WRITTEN PERMISSION OF PINE BROOK CORPORATION.  
**PINE BROOK CORPORATION**

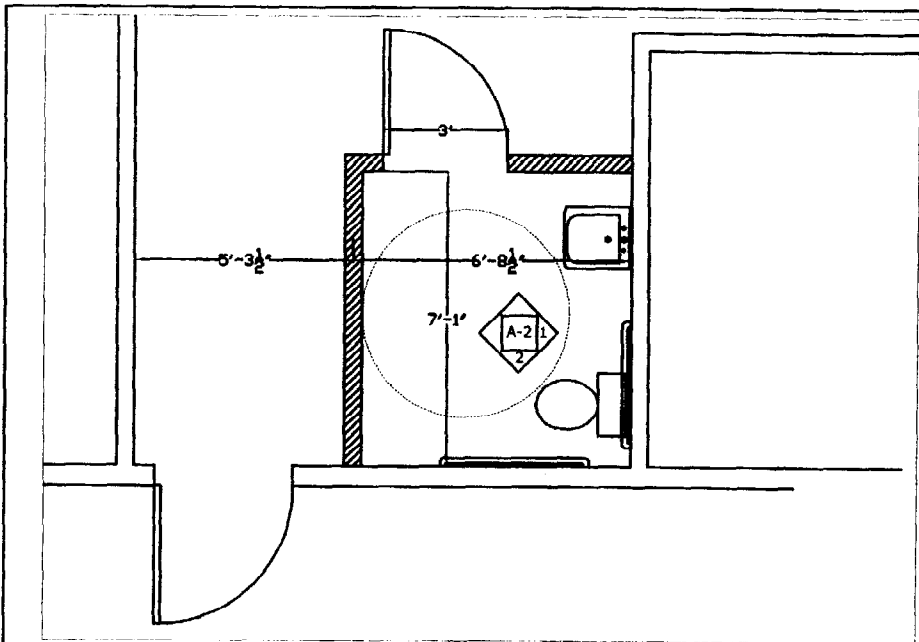
ST. MT. 238, 1800 W. Main St. Orono, ME 04963  
 TEL. (207) 438-7847 FAX. (207) 438-8888

Description:  
**EXISTING CONDITIONS**

Item Code:

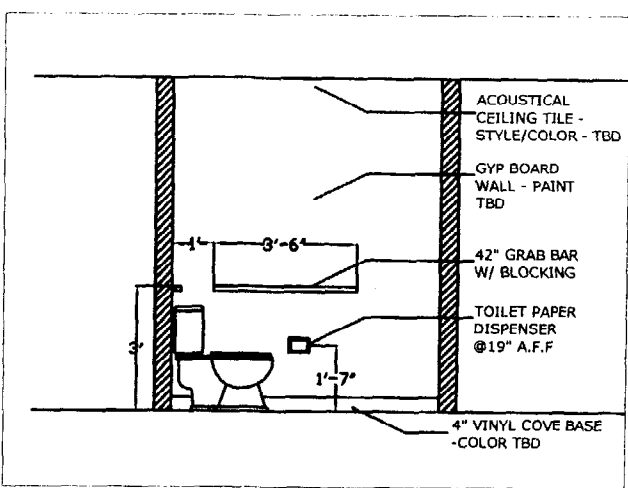
Scale: **NTS**

Page: **EX-1**

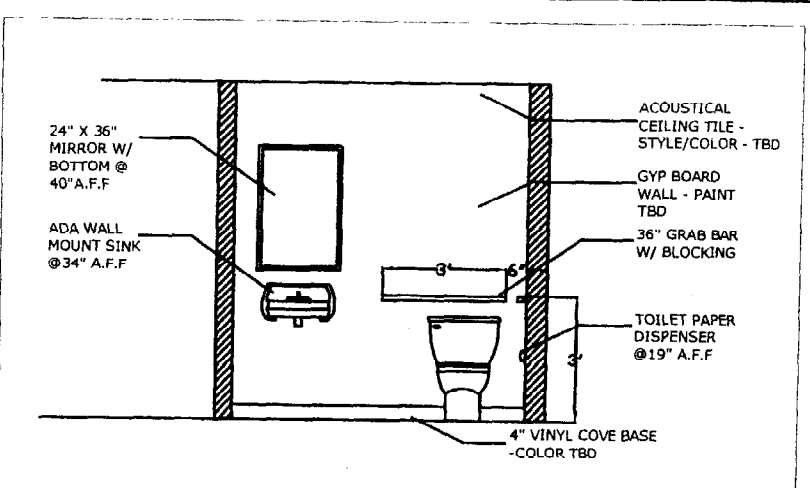


**ENLARGED ADA RESTROOM**

SCALE: 1/4" = 1'-0"

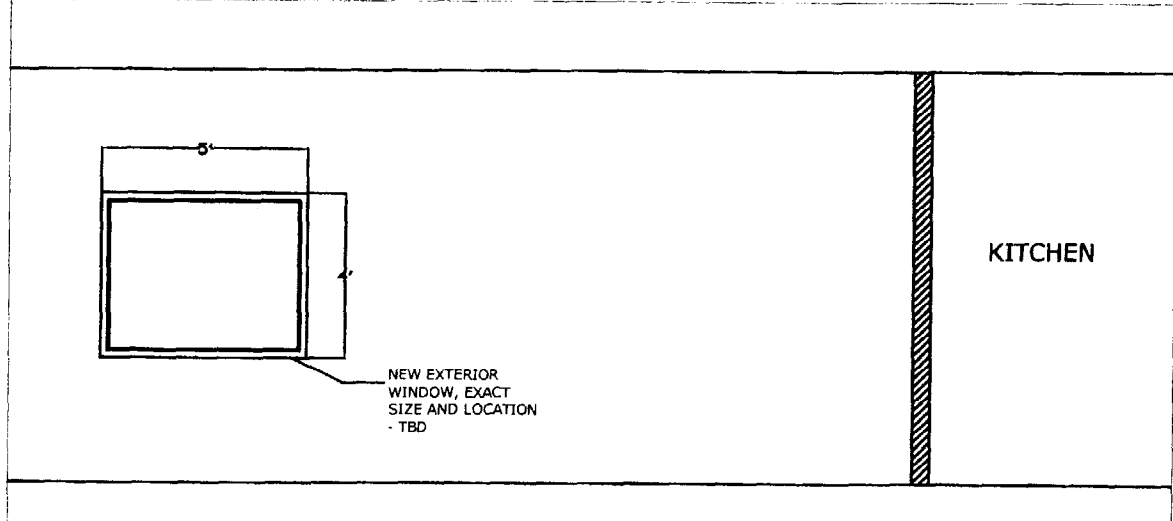


**2 RESTROOM ELEVATION**  
SCALE: 1/4" = 1'-0"

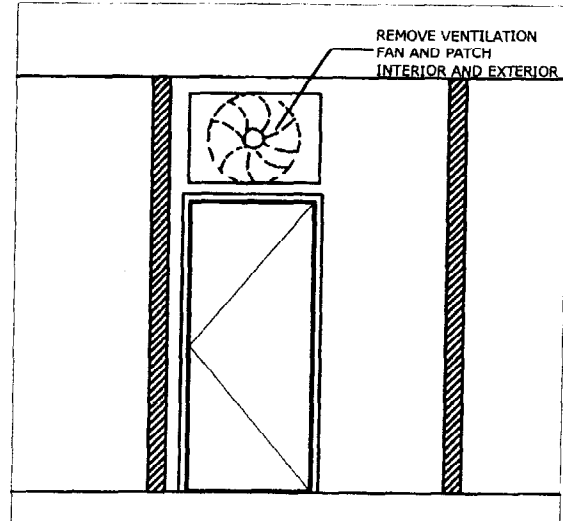


**1 RESTROOM ELEVATION**  
SCALE: 1/4" = 1'-0"

**RESTROOM NOTES:**  
RESTROOM TO BE CONSTRUCTED OVER EXISTING SLAB. INSTALL SEWAGE LIFT PUMP AND PIPE TO EXISTING RESTROOM



**3 OFFICE ELEVATION**  
SCALE: 1/4" = 1'-0"



**4 OFFICE ELEVATION**  
SCALE: 1/4" = 1'-0"

**OFFICE NOTES:**  
REMOVE EXISTING WALL CONNECTING KITCHEN TO SPRINKLER/ELEC RM, PATCH & MATCH AS REQUIRED.

Job	CC1
Drawn By	CMW
Revision	
Rev. Date	
Customer	STURBRIDGE YANKEE WORKSHOP 90 BLUEBERRY RD PORTLAND, MAINE
<small>THE INFORMATION CONTAINED HEREIN IS CONFIDENTIAL AND PROPRIETARY, AND MAY NOT BE DISCLOSED OR USED IN ANY WAY WITHOUT THE EXPRESSED WRITTEN PERMISSION OF PINE BROOK CORPORATION</small>	
PINE BROOK CORPORATION <small>37 RTE. 25A, LYNN, MAINE 03904 TEL. (207) 438-7547 FAX. (207) 438-8668</small>	
Description	ELEVATIONS
Date	8 MAR 04
Scale	AS NOTED
Page	A-2