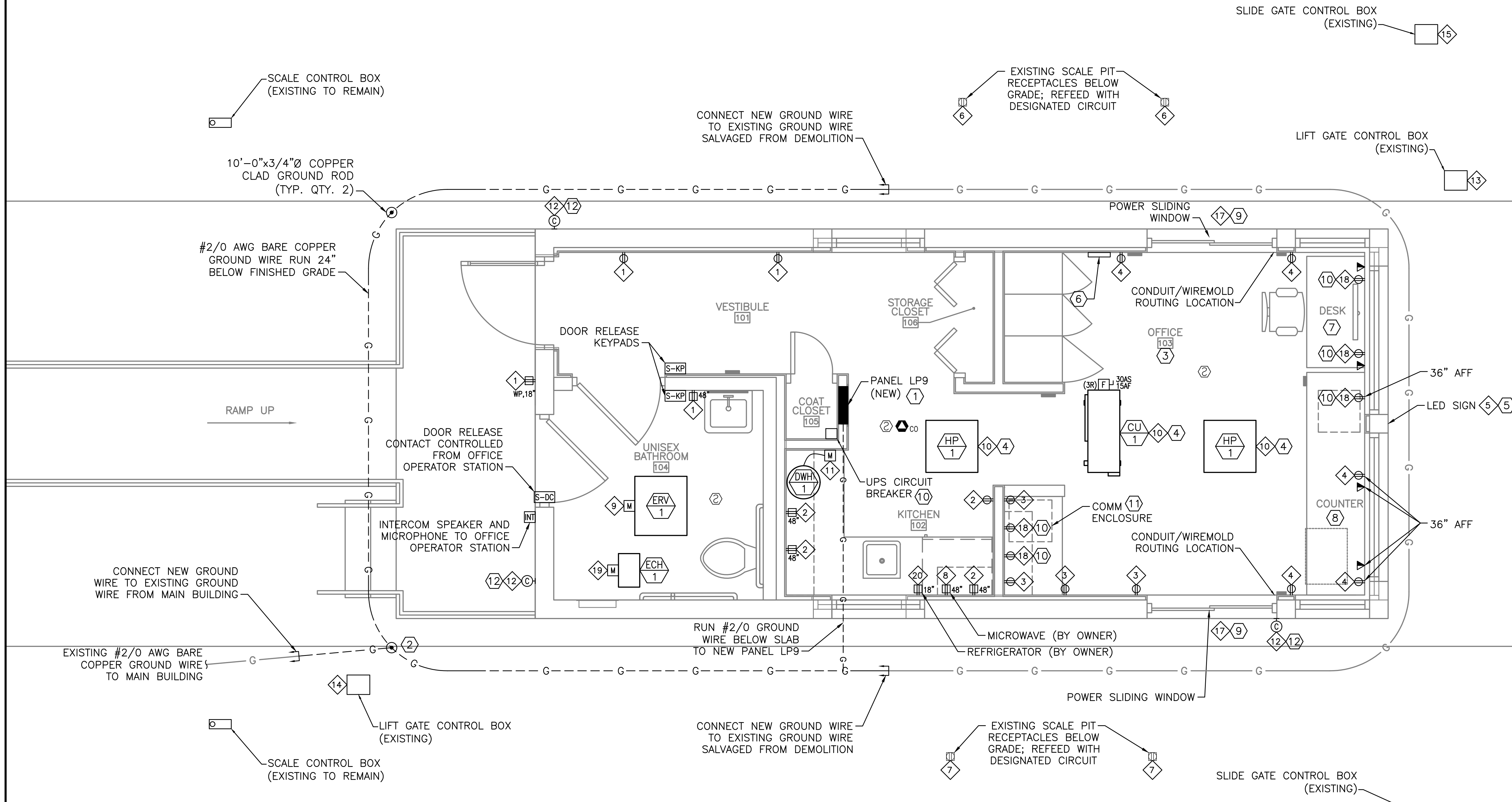


NOTES:

- SEE SHEET E-001 FOR LEGEND, ABBREVIATIONS, AND GENERAL NOTES.
- SEE SHEET E-601 FOR PANEL SCHEDULE, COMM RACK DIAGRAM, AND ENVIRONMENTAL SENSOR DIAGRAM.
- SEE MECHANICAL SHEETS FOR HVAC AND PLUMBING EQUIPMENT INSTALLATION AND SCHEDULES.
- SEE SHEET E-001 FOR ACCESS CONTROL SYSTEM DESCRIPTION.
- SITE FEATURE LOCATIONS EXTERIOR TO THE SCALE HOUSE NOT SHOWN TO SCALE. SEE CIVIL SHEETS FOR EXACT LOCATIONS OF EXISTING EQUIPMENT. ALL SITE FEATURES FED BELOW SLAB/GRADE FROM SCALE HOUSE.
- POWER AND CONTROL CONDUCTORS TO EXTERIOR LOADS SALVAGED FROM DEMOLITION. PROVIDE NEMA 4X JUNCTION BOXES BELOW FINISHED FLOOR FOR CONDUCTOR SPLICE. SEE SHEET A-101 FOR FLOOR ACCESS PANELS. EXTEND POWER SUPPLY CONDUCTORS TO NEW PANEL LP9 LOCATION. EXTEND CONTROL CONDUCTORS TO DESIGNATED LOCATION IN OFFICE.

KEYED NOTES:

- SPLICE EXISTING FEEDERS SALVAGED FROM DEMOLITION IN A WEATHERTIGHT PULLBOX LOCATED BELOW FINISHED FLOOR. EXTEND NEW #2/0 FEEDERS TO NEW PANEL LP9 LOCATION. CONNECT PANEL TO NEW GROUND RING.
- CONNECT NEW GROUND RING TO SALVAGED GROUND CONNECTION FROM MAIN BUILDING.
- ROUTE CONDUIT/WIREMOLD TO DEVICES FROM ABOVE SUSPENDED CEILING. AVOID TRAVERSING GLAZING.
- CONDENSING UNIT MOUNTED ON ROOF; SEE SHEET M-102. HEAT PUMPS MOUNTED IN FINISHED CEILING; SEE SHEET M-101. PROVIDE SUPPLY FEEDER FROM DESIGNATED CIRCUIT AND CONNECT IN ACCORDANCE WITH MANUFACTURER'S REQUIREMENTS.
- LED SIGN PROVIDED AND INSTALLED BY OWNER (FUTURE). PROVIDE DEDICATED PANEL BREAKER. INSTALL TWO (2) 3/4" CONDUITS (POWER AND CONTROL) FROM FRONT CORNER OF BUILDING TO TWO (2) JUNCTION BOXES ON BUILDING INTERIOR.
- ROUTE CONTROL/INSTRUMENTATION CONDUCTORS FROM EXTERIOR EQUIPMENT TO THIS GENERAL LOCATION. SERVICES INCLUDE GATE CONTROL, SCALE READ-OUT, BATHROOM ACCESS, AND INTERCOM. COORDINATE FINAL LOCATION WITH OWNER.
- THE FOLLOWING ITEMS SHALL BE LOCATED AT THE OFFICE DESK:
 - USER PC (BY OWNER)
 - SCALE DATA CONNECTION (BY SCALE VENDOR)
 - EXTERIOR INTERCOM ADJACENT TO RESTROOM
 - RESTROOM DOOR CONTROL
 - EAST AND WEST SLIDE GATE CONTROL CONSOLE (EXISTING TO BE RECONNECTED)
 - INBOUND/EAST LIFT GATE CONTROL SWITCH (EXISTING TO BE RECONNECTED)
- THE FOLLOWING ITEMS SHALL BE LOCATED AT THE OFFICE COUNTER:
 - OUTBOUND/WEST LIFT GATE CONTROL SWITCH (PROVIDE NEW TO MATCH INBOUND SWITCH)
- SEE ARCHITECTURAL SHEETS FOR WINDOW PRODUCT. COORDINATE PUSHBUTTON OPERATOR LOCATION WITH OWNER.
- EXTEND 120-VOLT, 20-AMP UPS SERVICE FOR OFFICE OPERATOR CONSOLE AND FIBER PATCH PANEL. LABEL RECEPTACLES AS "UPS CIRCUIT."
- EXTEND ALL CAT 5 CABLING FROM OWNER-PROVIDED PATCH PANELS TO VOICE-DATA JACKS. CONTRACTOR SHALL TERMINATE CABLING AT BOTH JACK AND PATCH PANEL. SEE SHEET E-601 FOR ANTICIPATED COMM EQUIPMENT.
- SECURITY CAMERAS PROVIDED AND INSTALLED BY OWNER. PROVIDE ONE (1) DEDICATED PANEL BREAKER TO SUPPLY ALL CAMERAS. FOR EACH CAMERA, INSTALL TWO (2) 3/4" CONDUITS (POWER AND DATA) THROUGH BUILDING EXTERIOR TO TWO (2) JUNCTION BOXES ON BUILDING INTERIOR. COORDINATE EXACT LOCATIONS WITH OWNER.

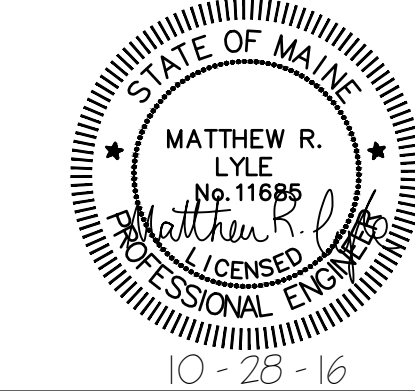
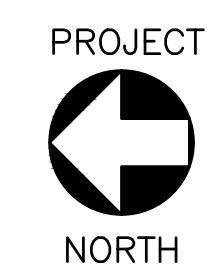
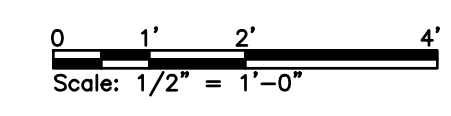


CIRCUIT SCHEDULE:

1 LP9-3	11 LP9-25
2 LP9-4	12 LP9-18
3 LP9-5	13 LP9-11
4 LP9-6	14 LP9-12
5 LP9-16	15 LP9-19,21,23
6 LP9-8	16 LP9-20,22,24
7 LP9-9	17 LP9-14
8 LP9-30	18 120V/1P UPS CIRCUIT (EXISTING)
9 LP9-10	19 LP9-26
10 LP9-13,15	20 LP9-28

ELECTRICAL FLOOR PLAN
SCALE: 1/2" = 1'-0"

ISSUED FOR BID
NOT FOR CONSTRUCTION
OCTOBER 28, 2016



PROJECT				ecomaine 64 BLUEBERRY ROAD, PORTLAND, ME			
SCALE HOUSE WITH INSULATED BLOCK CONSTRUCTION				ELECTRICAL FLOOR PLAN			
B	RE-ISSUED FOR BID	MRL	CBC	10/28/16	PROJECT NO. 162.002.002		DRAWING NO. E-101
A	ISSUED FOR BID	MRL	CBC	9/02/16	SHEET 38 OF 40		
REV	DESCRIPTION	DWN	APP	DATE	SIZE: ANSI D DATE: 09/02/2016 DES BY: MRL DWN BY: MRL CKD BY: CBC		
PLEASE NOTE: THIS DOCUMENT MAY NOT ACCURATELY REPRESENT THE FINAL DOCUMENT. ONLY AN ENGINEER, ARCHITECT OR SURVEYOR SIGNED, SEALED AND DATED PAPER COPY, PROVIDED BY THIS OFFICE, MAY BE UTILIZED FOR BIDDING OR CONSTRUCTION PURPOSES.		Colby Company engineering		47A York Street Portland, Maine 04101 207.533.7753 colbycoengineering.com			

X:\162 Ecomaine\162.002.002 - Scale House with CMU Drawings\Sheets\E-101.dwg - 10/31/2016 8:37 AM - BRIAN BEAULIEU