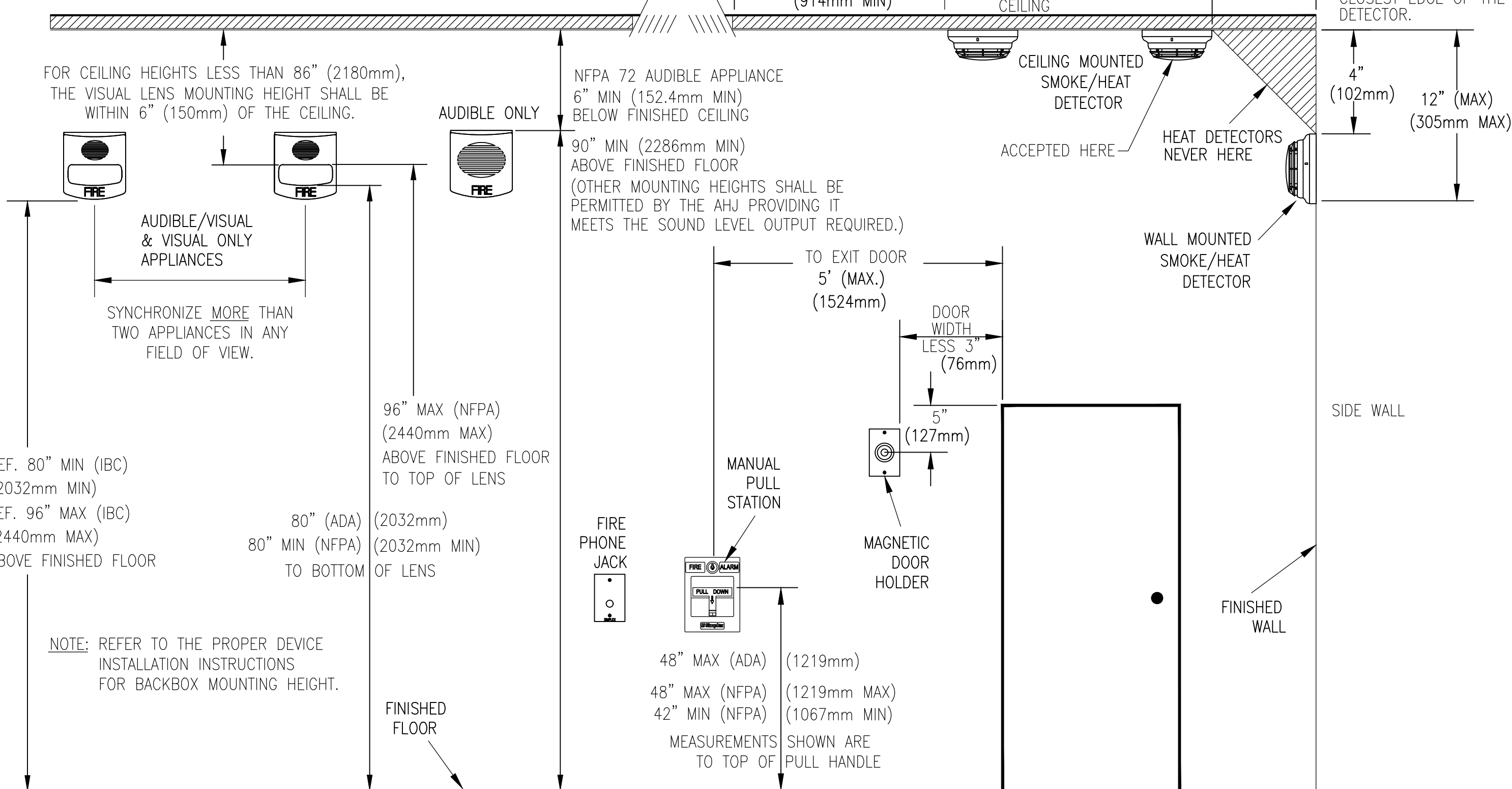


DEVICE MOUNTING HEIGHT REFERENCE (PER NFPA 72)

VISUAL APPLIANCE MOUNTING HEIGHT CONSIDERATIONS IN SLEEPING ROOMS
 1. MIN DISTANCE IN SLEEPING ROOMS IS 24" (610mm) FROM CEILING TO TOP OF LENS FOR 110CD STROBES WITHIN 16' OF THE PILLOW
 2. 177CD STROBES, USED IN SLEEPING ROOMS, CAN BE WITHIN THE 24" (610mm) MINIMUM DISTANCE FROM THE CEILING, THE HIGHER INTENSITY IS TO COMPENSATE FOR A POSSIBLE SMOKE LAYER.



PRODUCT INFORMATION

FEATURES:

- UL LISTED, FM APPROVED
- TRUEALARM ANALOG SENSING PROVIDES DIGITAL TRANSMISSION OF ANALOG SENSOR VALUES VIA MAPNET, OR IDNet SLC TWO WIRE COMMUNICATIONS
- FIRE ALARM CONTROL PANEL PROVIDES:
 - INDIVIDUAL SENSITIVITY SELECTION FOR EACH SENSOR
 - PEAK VALUE LOGGING ALLOWING ACCURATE ANALYSIS FOR SENSITIVITY SELECTION
 - AUTOMATIC ENVIRONMENTAL COMPENSATION
 - DISPLAY OF SENSITIVITY IN PERCENT PER FOOT
 - MULTISTAGE ALARM OPERATION
 - ABILITY TO DISPLAY AND PRINT DETAILED SENSOR INFORMATION IN PLAIN ENGLISH LANGUAGE
- PHOTOELECTRIC SMOKE SENSOR 4098-9714: SEVEN LEVELS OF SENSITIVITY FROM 0.2% TO 3.7%
- IONIZATION SMOKE SENSOR 4098-9717: FOUR LEVELS OF SENSITIVITY FROM 0.5% TO 1.7%
- HEAT SENSOR 4098-9733:
 - RATE-OF-RISE TEMPERATURE DETECTION IS SELECTABLE AT THE CONTROL PANEL FOR EITHER 15°F OR 20°F PER MINUTE
 - FIXED TEMPERATURE SENSING IS INDEPENDENT OF RATE-OF-RISE AND PROGRAMMABLE TO OPERATE AT 135°F OR 155°F
 - TRUEALARM HEAT SENSORS CAN BE PROGRAMMED AS A UTILITY DEVICE TO MONITOR FOR TEMPERATURE EXTREMES IN THE RANGE FROM 32°F TO 120°F.
- UL STANDARD SPACING:
 - 60 FT SPACING FOR 135°F
 - 40 FT SPACING FOR 155°F
- INTEGRAL RED LED FOR POWER-ON (PULSING), OR ALARM OR TROUBLE (STEADY ON)
- BASE MOUNTED ADDRESS SELECTION:
 - ACCESSIBLE FROM FRONT (DIP SWITCH UNDER SENSOR)
 - ADDRESS REMAINS WITH ITS PROGRAMMED LOCATION
- FOR USE WITH SIMPLEX 4010, 4100, 4020, AND 4120 SERIES CONTROL PANELS.
- MAXIMUM QUANTITY OF DEVICES:
 - 127 FOR 4020, 4100, 4120
 - 250 FOR 4010, 4100
- MOUNTING: CEILING OR WALL
- COLOR: FROST WHITE
- BASE DIMENSIONS: 15/16" X 4-7/8"

SPECIFICATIONS:

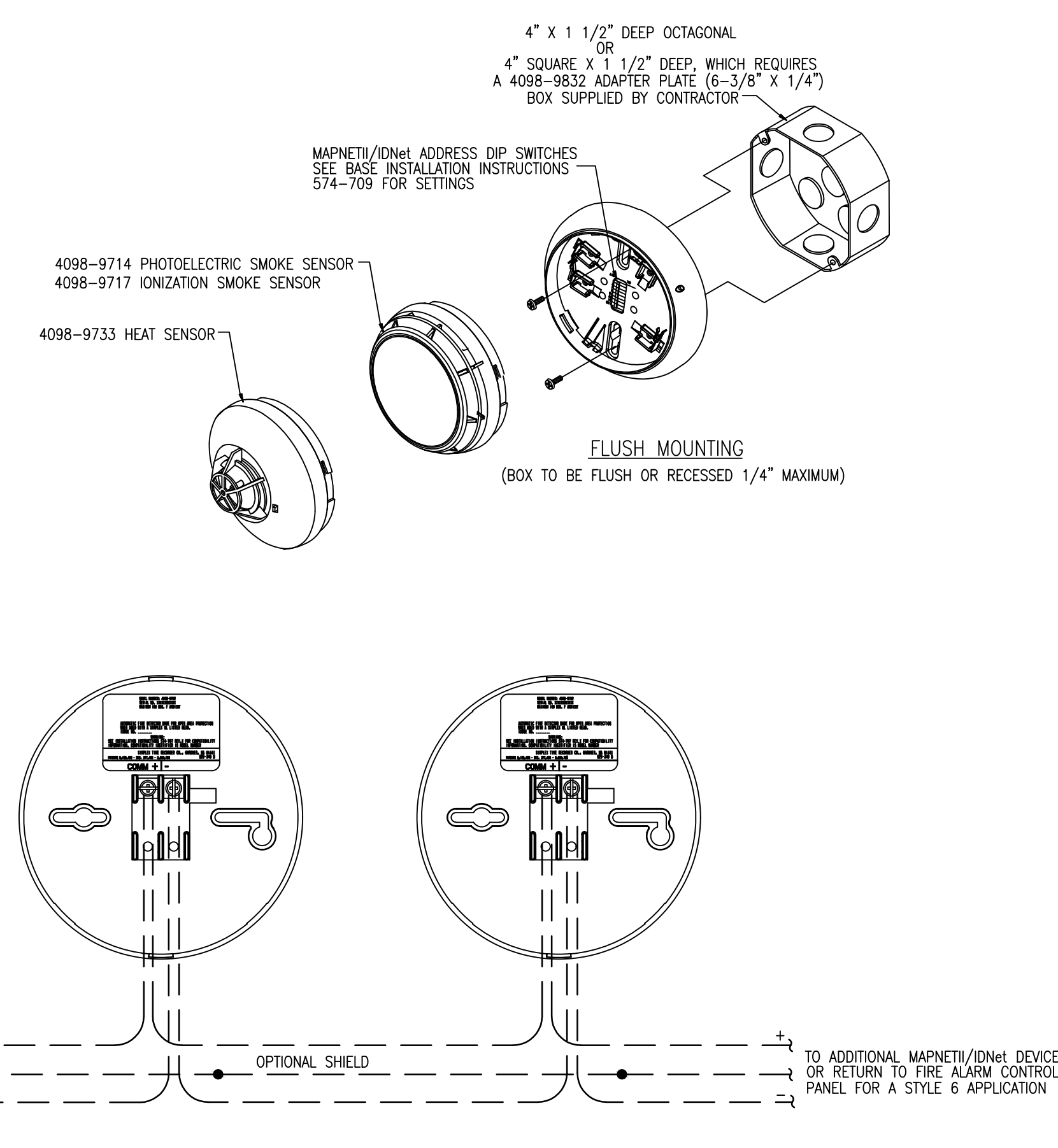
- UL LISTED TEMPERATURE RANGE: 32°F TO 100°F
- OPERATING TEMPERATURE RANGE: 32°F TO 120°F
- HUMIDITY RANGE: 10% TO 95% RH
- PHOTOELECTRIC SENSING AIR VELOCITY RANGE: 0-2000 FT/MIN
- IONIZATION SENSING AIR VELOCITY RANGE: 0-300 FT/MIN
- WIRING CONNECTIONS: SCREW TERMINALS FOR IN/OUT WIRING, #18 TO #14 AWG
- COMMUNICATIONS MAPNET/IDNet SLC: C ADDRESS PER BASE VOLTAGE (MAPNET/IDNet SLC): 24-40VDC CURRENT: 400uA TYPICAL

DESCRIPTION:
 TRUEALARM SENSOR BASES CONTAIN INTEGRAL ADDRESSABLE ELECTRONICS THAT CONSTANTLY MONITOR THE STATUS OF THE DETACHABLE PHOTOELECTRIC, IONIZATION, OR HEAT SENSORS. EACH SENSOR'S OUTPUT IS DIGITIZED AND TRANSMITTED TO THE SYSTEM FIRE ALARM CONTROL PANEL EVERY FOUR SECONDS. SINCE TRUEALARM SENSORS USE THE SAME BASE, DIFFERENT SENSOR TYPES CAN BE EASILY INTERCHANGED TO MEET SPECIFIC LOCATION REQUIREMENTS. THIS FEATURE ALLOWS INTERCHANGING SENSORS DURING BUILDING CONSTRUCTION. WHEN CONDITIONS ARE TEMPORARILY DUSTY, INSTEAD OF COVERING THE SMOKE SENSORS, HEAT SENSORS MAY BE INSTALLED WITHOUT REPROGRAMMING THE CONTROL PANEL. ALTHOUGH THE CONTROL PANEL WILL INDICATE AN INCORRECT SENSOR TYPE, THE HEAT SENSOR WILL OPERATE AS A DEFAULT SENSITIVITY PROVIDING HEAT DETECTION FOR BUILDING PROTECTION AT THAT LOCATION.

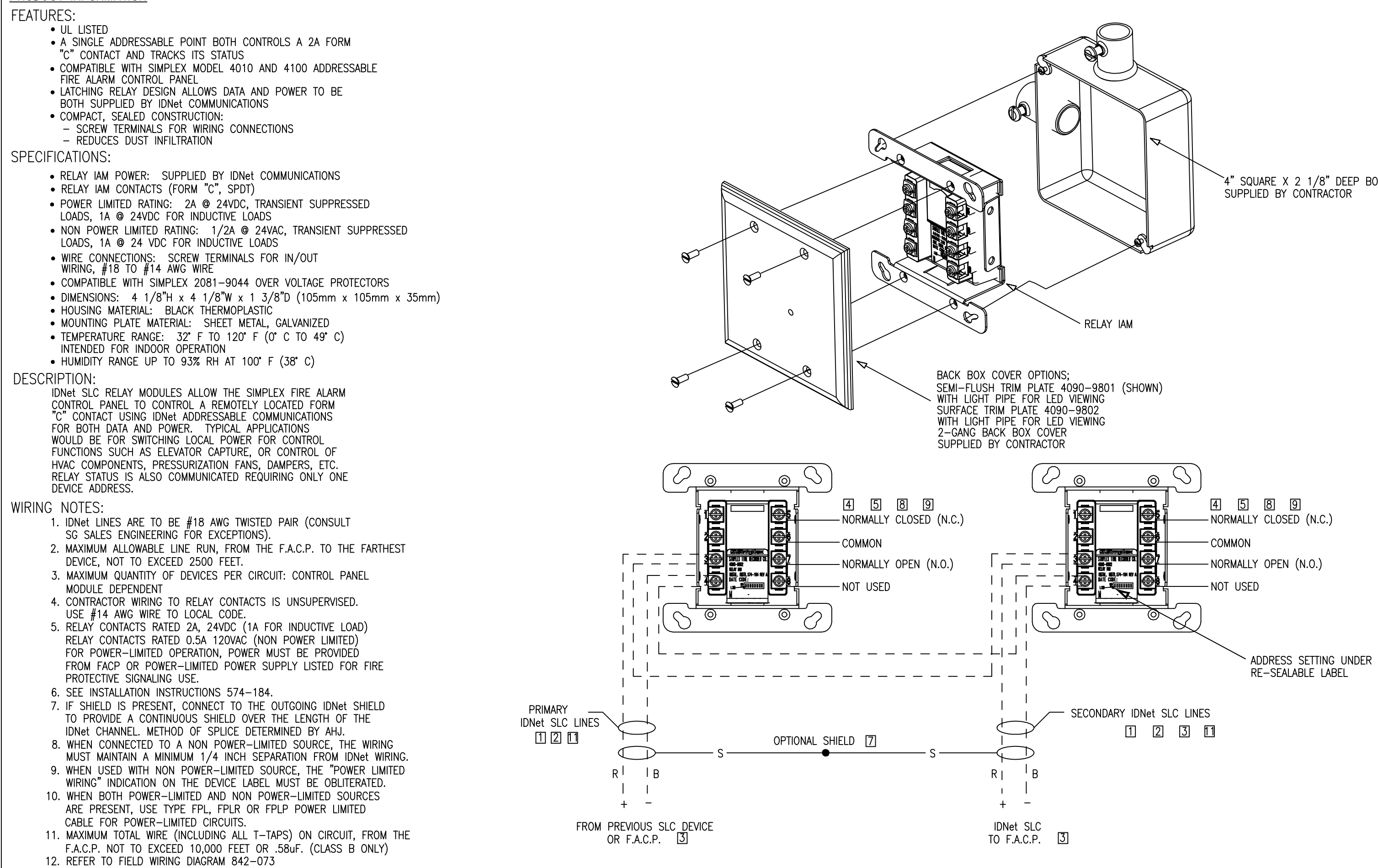
WIRING:

- ALL WIRING TO COMPLY WITH LOCAL CODE.
- CONDUCTORS MUST TEST FREE OF ALL GROUNDS.
- MAINTAIN CORRECT POLARITY.
- MAPNET/IDNet SLC WIRING TO BE #18 AWG TWISTED SHIELDED PAIR
- IF SHIELD IS PRESENT, CONNECT TO THE OUTGOING IDNet SLC SHIELD TO PROVIDE A CONTINUOUS SHIELD OVER THE LENGTH OF THE IDNet SLC CHANNEL. METHOD OF SPLICE DETERMINED BY AHJ.
- REFER TO INSTALLATION INSTRUCTIONS (574-707)
- REFER TO APPLICATION MANUAL (574-709)

4098-9792 STANDARD SENSOR BASE



4094-9002 IDNet SLC, INDIVIDUAL ADDRESSABLE OUTPUT MODULE RELAY (AOM)



PRODUCT INFORMATION

FEATURES:

- UL LISTED
- CALIFORNIA STATE FIRE MARSHAL LISTING NUMBERS: DH24120FPC DOOR HOLDERS: 3550-1039-0100
- MOUNTING: WALL, SEMI-FLUSH
- FINISH: POWDERCOAT CHROME

SPECIFICATIONS:

- VOLTAGE: OPERATES WITH 24 VDC, 24 VAC, OR 120 VAC
- CURRENT: 20 mA

DESCRIPTION:
 DH24120FPC MAGNETIC DOOR HOLDERS HAVE A MINIMUM HOLDING FORCE OF 40 LBS. UNDER NORMAL CONDITIONS, THE ELECTROMAGNET IS ENERGIZED TO HOLD OPEN THE DOOR. IN THE EVENT OF A FIRE, THE SIMPLEX FIRE ALARM CONTROL PANEL, OR AN APPROVED PERIPHERAL APPLIANCE, WILL AUTOMATICALLY INTERRUPT THE VOLTAGE TO THE DOOR HOLDER RELEASING THE DOOR TO PREVENT THE SPREAD OF SMOKE. DOORS MAY BE MANUALLY OPENED WHEN THE DOOR HOLDER IS ENERGIZED.

WIRING:

- ALL WIRING TO COMPLY WITH LOCAL CODE.
- MAINTAIN CORRECT POLARITY
- CONDUCTORS MUST TEST FREE OF ALL GROUNDS.

TO LOCATE AND MOUNT OUTLET BOX

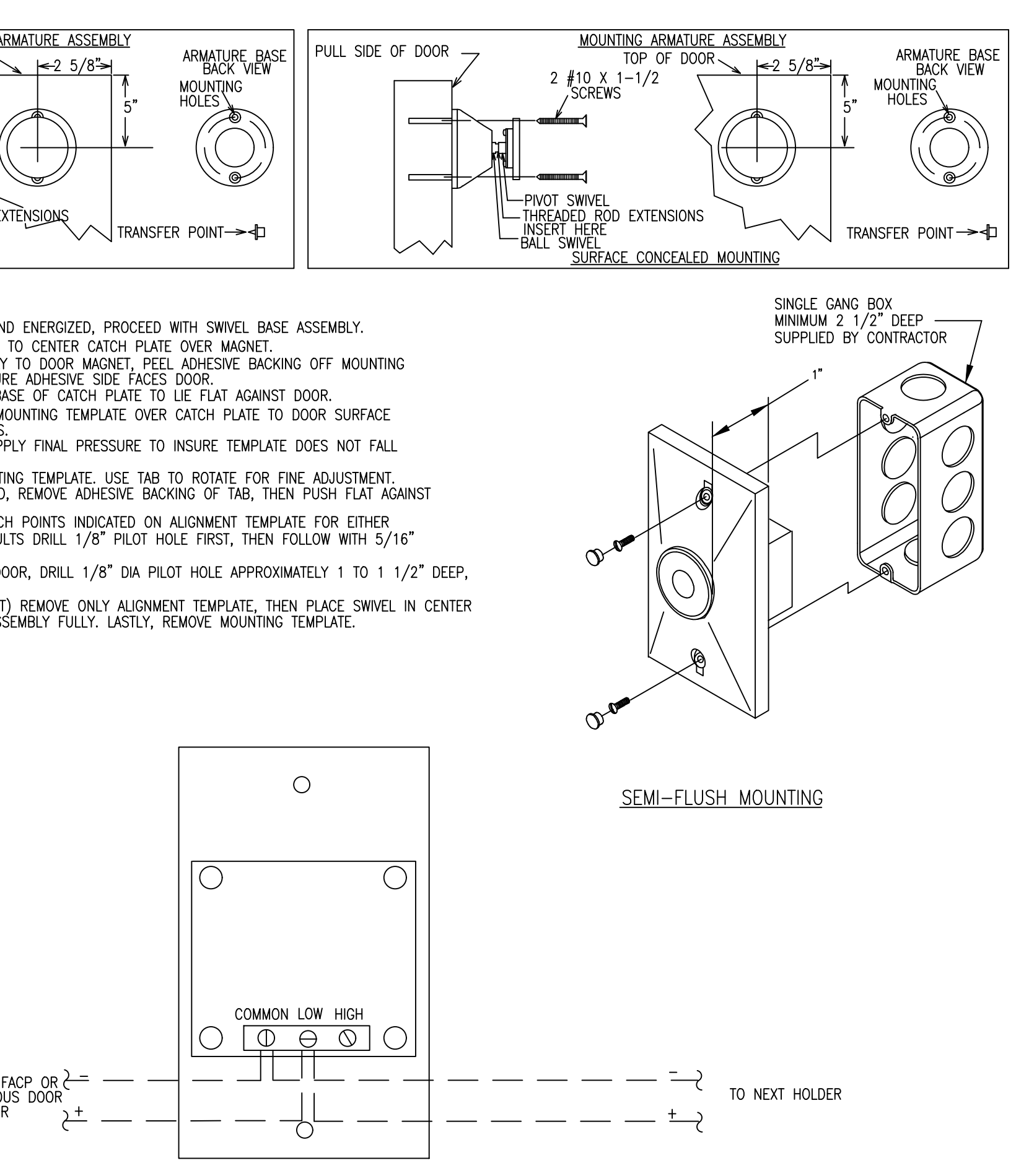
Y = DIMENSION OF DOOR

X	28	30	32	34	36	38	40	42	44	46	48
Y	28	28	29-7/8	32	34	36	38	40	42	43-7/8	45-5/8
2	28	28	29-7/8	32	34	36	38	40	42	43-7/8	45-5/8
4	28	28	29-7/8	32	34	36	38	40	42	43-7/8	45-5/8
6	28-7/8	27-5/8	29-5/8	31-3/4	33-3/4	35-3/4	37-3/4	39-3/4	41-3/4	43-5/8	45-3/8
8	25-1/4	23-1/4	25-1/4	27-3/8	29-3/8	31-1/2	33-1/2	35-1/2	37-1/2	41-1/2	43-3/8
10	24-5/8	26-3/4	28-3/4	30-7/8	33	35	37	39-1/8	41-1/8	43	44-7/8
12	23-3/4	25-7/8	28	30-1/8	32-1/4	34-3/8	36-3/8	38-1/2	40-5/8	42-1/2	44-3/8
14	23-3/4	25	27-1/4	29-3/8	31-1/2	33-3/4	35-7/8	38	40	42	43-7/8
16	21-3/4	24	26-1/4	28-1/2	30-3/4	33	35-1/8	37-1/4	39-3/8	41-3/8	43-3/8
18	20	22-1/2	25	27-3/8	29-3/4	32	34-1/4	36-1/2	38-5/8	40-5/8	42-1/2
20	18-1/4	21	23-1/2	26	28-1/2	30-7/8	33-1/8	35-1/2	37-5/8	39-5/8	41-5/8
22	18-3/4	21-5/8	24-3/8	27	29-3/8	31-3/4	34-1/8	36-1/2	38-5/8	40-3/4	42
24	18	20-1/2	22-1/2	25-1/2	28-1/8	30-5/8	33-1/8	35-5/8	37-7/8	40	42
26	18-3/4	21-5/8	24-3/8	27	29-3/8	31-3/4	34-1/8	36-1/2	38-5/8	40-3/4	42
28	18-3/4	21-5/8	24-3/8	27	29-3/8	31-3/4	34-1/8	36-1/2	38-5/8	40-3/4	42
30	18-3/4	21-5/8	24-3/8	27	29-3/8	31-3/4	34-1/8	36-1/2	38-5/8	40-3/4	42
32	18-3/4	21-5/8	24-3/8	27	29-3/8	31-3/4	34-1/8	36-1/2	38-5/8	40-3/4	42

X = DIMENSION OF DOOR JAMB TO WALL

1. REFER TO DRAWING & CHART TO LOCATE OUTLET BOX.
2. INSTALL THE OUTLET BOX ON THE HORIZONTAL CENTER LINE 5" FROM TOP OF DOOR.

DH24120FPC MAGNETIC DOOR HOLDER



tyco
 SimplexGrinnell
 Safer. Smarter. Tyco.

ECOMAINE - LOCKER ROOM RENOVATIONS

ECOMAINE LOCKER ROOM RENOVATIONS
 PORTLAND, ME 04112

FA-701

WIRING TYPICALS

FA-701

ISSUE NO.: _____
DATE: _____
CHK: _____
DESCRIPTION: _____

DRAWN BY: M.DESIATA
CHECKED BY: S.KALAFARSKI
ISSUE DATE: 9/20/16
JOB #: _____
PROJECT #: 147-994549801
SIMPLEXGRINNELL © 2016
SYSTEM: FIRE ALARM SYSTEM
SHEET: _____

24" x 36" - Arch D Size