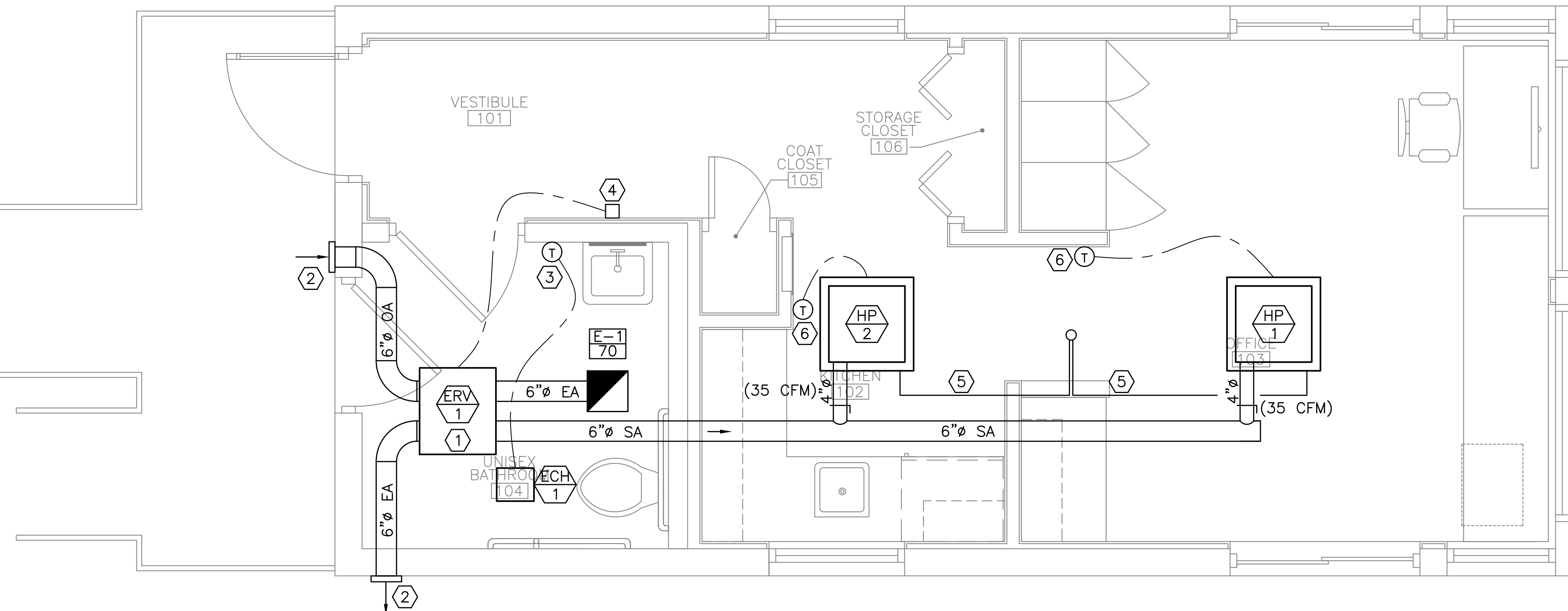


NOTES:

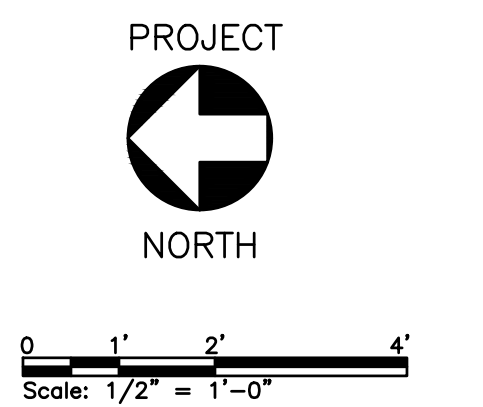
1. SEE SHEET M-001 FOR LEGEND, ABBREVIATIONS AND GENERAL NOTES.
2. RIGID SPIRAL DUCT SHALL BE USED THROUGHOUT FOR AIR DISTRIBUTION. MAX 5' OF FLEX DUCT TO BE USED FOR DIFFUSER CONNECTION, INTAKE AND EXHAUST CONNECTIONS, AND EQUIPMENT CONNECTIONS.

KEYED NOTES:

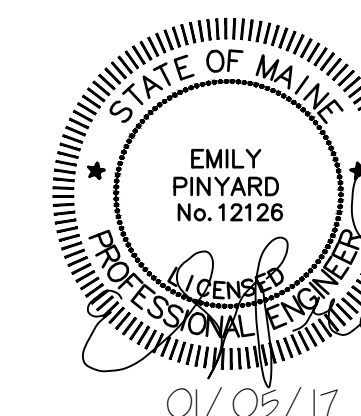
- ① PROVIDE 2'X2' ACCESS PANEL DIRECTLY BELOW ERV-1. PAINT TO MATCH CEILING.
- ② PROVIDE 9X9 WALL CAP/WEATHERHOOD AND BACKDRAFT DAMPER. (RECOMMENDED BY ERV MANUFACTURER).
- ③ PROVIDE A LOCK BOX FOR FOR THE THERMOSTAT AND PROVIDE THREE (3) KEYS TO THE CLIENT.
- ④ DIGITAL BATHROOM FAN CONTROL FOR ERV-1 OPERATING SCHEDULE.
- ⑤ PROVIDE TWO (2) SETS OF INSULATED 3/8" GAS PIPING & 1/4" INSULATED LIQUID PIPING IN CEILING PLENUM. ROUTE PIPING UP TO CU-1 LOCATED ON THE ROOF. ENSURE MINIMUM AND MAXIMUM REFRIGERANT LENGTHS COMPLY WITH MANUFACTURER'S INSTALLATION MANUAL.
- ⑥ WIRED WALL CONTROLLER.



MECHANICAL FLOOR PLAN
SCALE: 1/2" = 1'-0"



**ISSUED FOR BID
NOT FOR CONSTRUCTION**
JANUARY 5, 2017



PLEASE NOTE: THIS DOCUMENT MAY NOT ACCURATELY REPRESENT THE FINAL DOCUMENT. ONLY AN ENGINEER, ARCHITECT OR SURVEYOR SIGNED, SEALED AND DATED PAPER COPY, PROVIDED BY THIS OFFICE, MAY BE UTILIZED FOR BIDDING OR CONSTRUCTION PURPOSES.

ecomaine 64 BLUEBERRY ROAD, PORTLAND, ME			
SCALE HOUSE WITH INSULATED BLOCK CONSTRUCTION			
MECHANICAL FIRST FLOOR PLAN			
REV	DESCRIPTION	DWN	APP DATE
C	RE-ISSUED FOR BID	MBD	ERP 01/05/17
B	RE-ISSUED FOR BID	MBD	ERP 10/28/16
A	ISSUED FOR BID	MBD	ERP 9/02/16
SIZE: ANSI D		PROJECT NO. 162.002.002	
DATE: 09/02/2016		DRAWING NO. M-101	
DES BY: MIF		SHEET 28 OF 40	
DWN BY: MBD			
CKD BY: ERP			