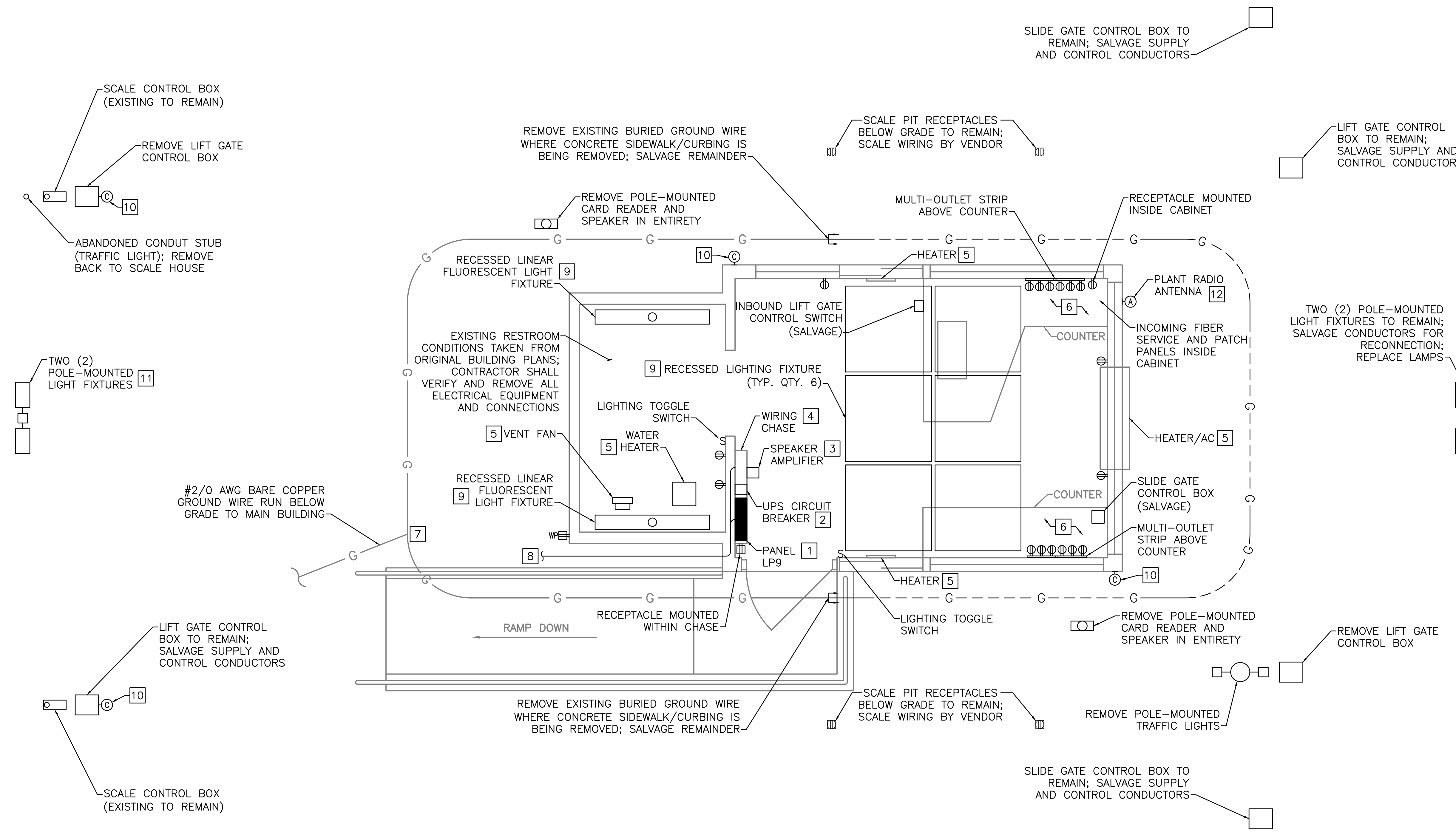


NOTES:

- SEE SHEET E-001 FOR LEGEND, ABBREVIATIONS, AND GENERAL NOTES.
- EXISTING CONDITIONS BASED ON RECORD DRAWINGS: "REGIONAL WASTE SYSTEMS, INC. - GREATER PORTLAND RESOURCE RECOVERY PROJECT" BY DRAVO ENERGY RESOURCES, INC., 1/3/1989. CONTRACTOR SHALL VERIFY ALL EXISTING CONDITIONS AND BRING DISCREPANCIES TO THE ATTENTION OF THE OWNER.
- SCOPE OF WORK INCLUDES REMOVAL OF ALL ELECTRICAL EQUIPMENT, DEVICES, LIGHTING, WIRING, AND ASSOCIATED CONDUIT FOR BRANCH CIRCUITS (GREATER THAN OR EQUAL TO 120-VOLTS). SALVAGE ALL LOW-VOLTAGE AND COMMUNICATION WIRING AND DEVICES FOR SYSTEM EXTENSION, RELOCATION, AND REINSTALLATION.
- SITE FEATURE LOCATIONS EXTERIOR TO THE SCALE HOUSE NOT SHOWN TO SCALE. SEE CIVIL SHEETS FOR EXACT LOCATIONS OF EXISTING EQUIPMENT. ALL SITE FEATURES FED BELOW SLAB/GRADE FROM SCALE HOUSE.

DEMOLITION KEYED NOTES:

- REMOVE PANEL LP9: 208Y/120V, 3PH, 4W, 30 POLE PANELBOARD. REMOVE CONDUCTORS AND CONDUIT TO ALL INTERIOR LOADS; SALVAGE CONDUCTORS AND CONDUIT TO ALL EXTERIOR LOADS. SALVAGE PANEL FEEDERS FOR RECONNECTION DURING INSTALLATION PHASE.
- REMOVE AND SALVAGE ENCLOSED 20-AMP CIRCUIT BREAKER FOR UPS. SALVAGE 120-VOLT, 1-PHASE, 20-AMP UPS CIRCUIT FROM MAIN BUILDING FOR EXTENSION DURING INSTALLATION.
- DISCONNECT AND SALVAGE SPEAKER AMPLIFIER. SALVAGE SUPPLY WIRING FOR RECONNECTION.
- PANEL FEEDERS, BRANCH CIRCUITS, AND COMM/CONTROL WIRING RUN FROM BELOW WIREWAY CHASE. SEE LIST OF WIRING CHASE SERVICES THIS SHEET.
- REMOVE SUPPLY WIRING TO MECHANICAL EQUIPMENT.
- ALL EQUIPMENT MOUNTED ON COUNTERTOP SHALL BE DISCONNECTED AND REMOVED BY OWNER. CONTRACTOR SHALL REMOVE ANY REMAINING DEVICES AND/OR HARDWIRED CONNECTIONS.
- REMOVE SCALE HOUSE GROUND RING WHERE CONCRETE SIDEWALK/CURB IS BEING REMOVED. SALVAGE REMAINDER OF GROUND RING AND GROUND WIRE CONNECTION TO MAIN BUILDING FOR RECONNECTION DURING INSTALLATION PHASE.
- ELECTRICAL AND COMMUNICATION SERVICE FROM MAIN BUILDING:
 - (1) 3/C #2/0 CABLE W/GND (208V/3P)
 - (1) 120V/1P/20A CIRCUIT (UPS)
 - (1) 6-PAIR FIBER OPTIC DATA
 - (2) SHIELDED PAIR (INTERCOM)
 - (1) 2-PAIR (TELEPHONE)
- REMOVE ALL LIGHTING FIXTURES, INCLUDING WIRE AND CONDUIT.
- REMOVE SECURITY CAMERAS AND RETURN TO OWNER.
- REMOVE POLE-MOUNTED FIXTURES AND SUPPLY CONDUCTORS BACK TO PANEL LP9.
- REMOVE PLANT RADIO SYSTEM ANTENNA AND RETURN TO OWNER.



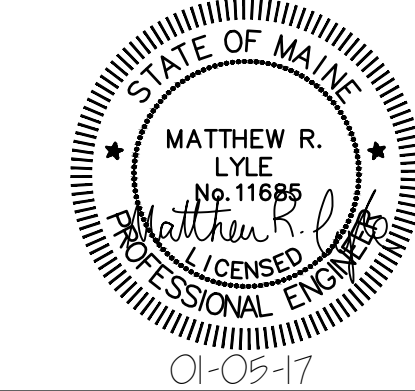
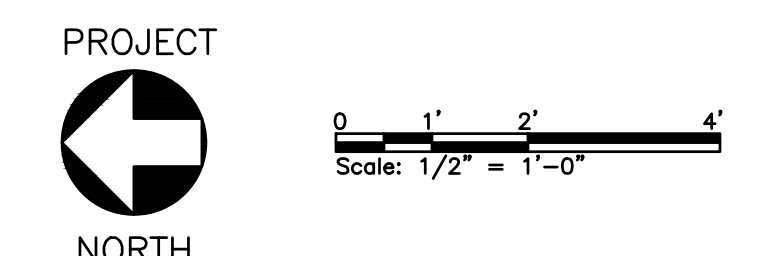
ELECTRICAL DEMOLITION PLAN

SCALE: 1/2" = 1'-0"

WIRING CHASE SERVICES

- EAST SCALE PIT RECEPTACLES (REMAIN; DISCONNECT/RECONNECT BY VENDOR)
- WEST SCALE PIT RECEPTACLES (REMAIN; DISCONNECT/RECONNECT BY VENDOR)
- POLE-MOUNTED LIGHTS (1 TO REMAIN; 1 TO REMOVE)
- TRAFFIC LIGHT, INCLUDING ABANDONED CONDUIT (REMOVE)
- EAST CARD READER (REMOVE)
- EAST SCALE POWER & DATA (REMAIN; DISCONNECT/RECONNECT BY VENDOR)
- WEST SCALE POWER & DATA (REMAIN; DISCONNECT/RECONNECT BY VENDOR)
- EAST SWING GATE POWER & CONTROL (REMAIN)
- WEST SWING GATE POWER & CONTROL (REMAIN)
- EAST LIFT GATE SOUTH - POWER & CONTROL (REMAIN)
- EAST LIFT GATE NORTH - POWER & CONTROL (REMOVE)
- WEST LIFT GATE SOUTH - POWER & CONTROL - (REMOVE)
- WEST LIFT GATE NORTH - POWER & CONTROL - (REMAIN)
- 208V/3P ELECTRICAL SERVICE FROM MAIN BUILDING (REMAIN)
- 120V/1P UPS SERVICE FROM MAIN BUILDING (REMAIN)
- COMMUNICATIONS FROM MAIN BUILDING (REMAIN)

ISSUED FOR BID
NOT FOR CONSTRUCTION
 JANUARY 5, 2017



PROJECT		ecomaine	
		64 BLUEBERRY ROAD, PORTLAND, ME	
		SCALE HOUSE WITH INSULATED BLOCK CONSTRUCTION	
		ELECTRICAL DEMOLITION PLAN	
REV	DESCRIPTION	DWN	APP DATE
C	RE-ISSUED FOR BID	MRL	CBC 01/05/17
B	RE-ISSUED FOR BID	MRL	CBC 10/28/16
A	ISSUED FOR BID	MRL	CBC 9/02/16
SIZE: ANSI D		PROJECT NO. 162.002.002	
DATE: 09/02/2016		DRAWING NO. ED-101	
DES BY: MRL		SHEET 37 OF 40	
DWN BY: MRL			
CKD BY: CBC			

PLEASE NOTE: THIS DOCUMENT MAY NOT ACCURATELY REPRESENT THE FINAL DOCUMENT. ONLY AN ENGINEER, ARCHITECT OR SURVEYOR SIGNED, SEALED AND DATED PAPER COPY, PROVIDED BY THIS OFFICE, MAY BE UTILIZED FOR BIDDING OR CONSTRUCTION PURPOSES.

