

LIGHTING SYMBOL LEGEND:

NOTE: SEE SHEET E-601 FOR LIGHTING FIXTURE SCHEDULE

- 2x2 RECESSED LED FIXTURE
INDICATES ASSOCIATED CONTROL DEVICE
INDICATES FIXTURE TYPE
- 1x4 LINEAR LED FIXTURE
INDICATES ASSOCIATED CONTROL DEVICE
INDICATES FIXTURE TYPE
- EXTERIOR LED WALLPACK
INDICATES FIXTURE TYPE
- RECESSED LED DOWN LIGHT
INDICATES ASSOCIATED CONTROL DEVICE
INDICATES FIXTURE TYPE
- EXIT SIGN, WALL MOUNTED
SHADING INDICATES SIGN FACE
- DUAL HEAD EMERGENCY LIGHT BATTERY PACK
- REMOTE EMERGENCY LIGHTING HEAD
- SINGLE POLE TOGGLE SWITCH
INDICATES ASSOCIATED CONTROLLED FIXTURE
INDICATES 3-WAY CONTROL

GROUNDING SYMBOL LEGEND:

- GROUND ROD: 10'-0" x 3/4" DIAMETER; COPPER CLAD
- EXOTHERMIC WELD CONNECTION
- COMPRESSION CONNECTION
- BARE COPPER CONDUCTOR RUN EXPOSED
- BARE COPPER CONDUCTOR EMBEDDED IN CONCRETE OR BURIED

SUBMITTALS:

NOTE: EACH SUBMITTAL SHALL BE CLEARLY MARKED WITH UNIQUE EQUIPMENT IDENTIFIER.

1. PANELBOARD
2. LIGHTING FIXTURES (EACH TYPE)
3. DEVICES
 - 3.1. RECEPTACLES (NORMAL AND GFCI)
 - 3.2. LIGHTING TOGGLE SWITCHES
 - 3.3. VOICE/DATA OUTLETS
4. DISCONNECT SWITCH (DWH-1)
5. DISCONNECT SWITCH (RTU-1)
6. MOTOR STARTER (RTU-1)
7. ENVIRONMENTAL MONITORING SYSTEM
 - 7.1. CONTROLLER
 - 7.2. SMOKE DETECTOR
 - 7.3. CARBON MONOXIDE DETECTOR
8. AS-BUILT INFORMATION
 - 8.1. ELECTRICAL PLAN VIEWS (SEPARATE POWER/SYSTEMS AND LIGHTING) INDICATING FINAL DEVICE/EQUIPMENT LOCATION AND CIRCUIT, IF APPLICABLE
 - 8.2. FINAL PANELBOARD DIRECTORY
 - 8.3. GATE INTERCONNECTIONS
 - 8.4. INTERCOM SYSTEM INTERCONNECTIONS
 - 8.5. ACCESS CONTROL SYSTEM INTERCONNECTIONS

POWER SYMBOL LEGEND:

- PANELBOARD, SERVICE ENTRANCE
(SEE SHEET E-601 FOR SPECIFICATIONS)
- FUSED SAFETY SWITCH: 240V/3P; HEAVY-DUTY
#AS INDICATES SWITCH AMPERE RATING
#AF INDICATES FUSE RATING
NEMA ENCLOSURE
MANUFACTURERS: SQUARE D, EATON, OR SIEMENS
- MOTOR STARTER; HAND/OFF/AUTO
VOLTAGE AND CURRENT RATING TO MATCH EQUIPMENT
MANUFACTURERS: SQUARE D, EATON, OR SIEMENS
- MANUAL MOTOR STARTER W/ OVERLOAD PROTECTION;
TOGGLE OPERATED, PHASE/POLES AS REQUIRED
MANUFACTURERS: SQUARE D OR HUBBELL
INDICATES WEATHERPROOF RATING
- DUPLEX RECEPTACLE, NEMA 5-20R
MANUFACTURERS: LEVITON OR HUBBELL
- GFCI DUPLEX RECEPTACLE, NEMA 5-20R
MANUFACTURERS: LEVITON OR HUBBELL
INDICATES WEATHERPROOF RATING
INDICATES MOUNTING HEIGHT (IF DIFFERENT THAN NORMAL SPECIFIED REQUIREMENT)
- DUPLEX RECEPTACLE, NEMA 5-20R, BELOW GRADE
(EXISTING DEVICES TO REMAIN)
- MULTI OUTLET ASSEMBLY/WIRE MOLD (DEMOLITION)
- JUNCTION BOX (TYPICALLY USED TO INDICATE A HARD-WIRED CONNECTION TO A PIECE OF EQUIPMENT)
- ELECTRICAL CONNECTION
- CONDUIT TURNING UP/DOWN, AS NOTED

SYSTEMS/LOW-VOLTAGE SYMBOL LEGEND:

- COMBINATION VOICE/DATA SYSTEM OUTLET;
TWO (2) RJ45 PORTS FOR CAT 5 CONNECTIONS
- SECURITY SYSTEM - DOOR CONTACT (NEW)
- SECURITY SYSTEM - KEYPAD
- SECURITY CAMERA (EXISTING)
- ANTENNA (EXISTING)
- INTERCOM SYSTEM STATION;
SEE PLANS FOR DESCRIPTION
- PHOTOELECTRIC SMOKE DETECTOR
- CARBON MONOXIDE DETECTOR

ACCESS CONTROL SYSTEM NOTES:

1. VISITORS CAN ONLY ACCESS RESTROOM FROM BUILDING EXTERIOR
 - 1.1. VISITOR USES EXTERIOR INTERCOM TO COMMUNICATE REQUEST TO SCALE HOUSE ATTENDANT.
 - 1.2. ATTENDANT RELEASES EXTERIOR DOOR LOCK CONTACT FROM OFFICE DESK CONSOLE.
 - 1.3. VISITOR CAN NOT ACCESS INTERIOR OF SCALE HOUSE AS THERE IS A KEYPAD ON INTERIOR OF RESTROOM DOOR TO VESTIBULE.
 - 1.4. VISITOR EXITS THROUGH EXTERIOR DOOR USING NORMAL HARDWARE.
2. SCALE HOUSE ATTENDANT ACCESSES RESTROOM VIA VESTIBULE RESTROOM DOOR
 - 2.1. ATTENDANT MUST USE KEYPAD TO ACCESS RESTROOM
 - 2.2. ATTENDANT MUST USE EXIT KEYPAD ON INTERIOR OF RESTROOM TO EXIT.
3. ALL DOOR HARDWARE SYSTEMS SHALL OPERATE AT 24VDC

ABBREVIATIONS:

- Ø DIAMETER
- A AMPERE
- AFF ABOVE FINISHED FLOOR
- AFG ABOVE FINISHED GRADE
- AHJ AUTHORITY HAVING JURISDICTION
- AIC AMPERE INTERRUPTING CAPACITY
- AWG AMERICAN WIRE GAUGE
- C CONDUIT
- CO CARBON MONOXIDE
- COMM COMMUNICATIONS (VOICE/DATA)
- EC ELECTRICAL CONTRACTOR
- EMT ELECTRICAL METALLIC TUBING
- FWE FURNISHED WITH EQUIPMENT
- GFCI GROUND FAULT CIRCUIT INTERRUPT
- GND GROUND
- HACR HEATING, AIR CONDITIONING, AND REFRIGERATION
- HPS HIGH-PRESSURE SODIUM
- K KILO
- KCMIL THOUSAND CIRCULAR MILS
- KVA KILOVOLT-AMPERE
- KW KILOWATT
- LFMC LIQUID-TIGHT FLEXIBLE METALLIC CONDUIT
- LTG LIGHTING
- MAX MAXIMUM
- MC METAL CLAD
- MCB MAIN CIRCUIT BREAKER
- MIN MINIMUM
- MTD MOUNTED
- NEC NATIONAL ELECTRICAL CODE
- NEMA NATIONAL ELECTRICAL MANUFACTURERS ASSOCIATION
- NIC NOT IN CONTRACT
- NTS NOT TO SCALE
- P POLE
- PH PHASE
- PVC POLYVINYL CHLORIDE
- QTY QUANTITY
- RM(S) ROOM(S)
- RGS RIGID GALVANIZED STEEL
- SPD SURGE PROTECTIVE DEVICE
- STP SHIELDED TWISTED PAIR
- TVSS TRANSIENT VOLTAGE SURGE SUPPRESSION
- TYP TYPICAL
- UL UNDERWRITERS LABORATORIES
- UPS UNINTERRUPTIBLE POWER SUPPLY
- V VOLT
- VA VOLT-AMPERE
- VAC VOLTS - ALTERNATING CURRENT
- WP WEATHER PROOF

DEMOLITION NOTES:

1. SEE SHEET ED-101 FOR EXISTING CONDITIONS AND DEMOLITION SCOPE.
2. ELECTRICAL CONTRACTOR (EC) SHALL ATTEND PRE-BID SITE WALK-THROUGH TO VERIFY EXISTING CONDITIONS. ALL QUESTIONS REGARDING WORK SCOPE SHALL BE SUBMITTED TO OWNER FOR CLARIFICATION.
3. EC SHALL INVENTORY ALL ELECTRICAL UTILITIES ENTERING AND LEAVING THE BUILDING, INCLUDING BOTH FEEDERS/BRANCH CIRCUITS (GREATER THAN OR EQUAL TO 120V) AND LOW-VOLTAGE (LESS THAN 120V) CONTROL/SIGNAL CABLING. KEEP AS-BUILT RECORDS OF EXISTING ELECTRICAL UTILITIES FOR RECONNECTION DURING INSTALLATION PHASE.

NOTE: UTILITIES SCHEDULED TO BE RECONNECTED SHALL BE SPLICED IN JUNCTION BOXES BELOW FINISHED FLOOR OF NEW SCALE HOUSE BUILDING. UTILITIES WILL THEN EXTEND TO NEW LOCATIONS AS SHOWN ON PLANS.
4. ALL POWER AND CONTROL WIRING FOR TRUCK SCALES SHALL BE HANDLED BY SCALE VENDOR.
5. EC SHALL INSPECT SALVAGED CONDUCTORS FOR ELECTRICAL INTEGRITY. NOTE CONDUCTORS THAT EXHIBIT DISCOLORATION OR DAMAGED INSULATION AND BRING TO THE OWNER'S ATTENTION.
6. REMOVE EXISTING BUILDING GROUND WIRE WHERE CONCRETE CURB/SIDEWALK IS BEING REMOVED. SALVAGE REMAINING GROUND WIRE FOR RECONNECTION DURING INSTALLATION PHASE.

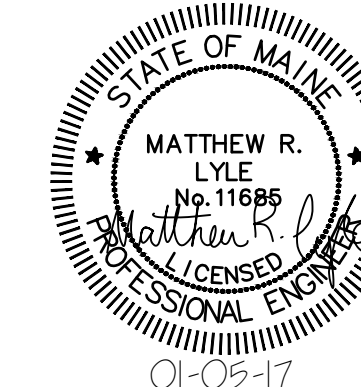
NOTES:

1. ALL GENERAL NOTES, SYMBOL LISTS AND DETAILS ARE TO BE CONSIDERED AS APPLICABLE TO ALL ELECTRICAL DRAWINGS FOR THIS PROJECT. SYMBOLS AND ABBREVIATIONS SHOWN ON THIS SHEET ARE FOR REFERENCE ONLY AND DO NOT INDICATE THEIR INCORPORATION IN THE DESIGN.
2. ALL WORK SHALL BE PERFORMED IN ACCORDANCE WITH NFPA-70, NATIONAL ELECTRICAL CODE (NEC) 2014.
3. ALL CONDUCTOR MATERIAL, INCLUDING WIRING, PANELBOARD BUSES, AND GROUNDING SHALL BE COPPER. ALUMINUM CONDUCTORS SHALL NOT BE ALLOWED.
4. ALL INTERIOR DISTRIBUTION AND BRANCH WIRING SHALL BE 600V COPPER WITH THHN/THWN INSULATION. ALL EXTERIOR DISTRIBUTION AND BRANCH WIRING SHALL BE 600V COPPER WITH XHHW INSULATION.
5. CONDUIT TYPES (MINIMUM TRADE SIZE 3/4"):
 - INTERIOR: EMT
 - INTERIOR, SURFACE MOUNT (OFFICE): WIREMOLD
 - INTERIOR, LIGHTING CONNECTIONS: MC CABLE
 - EXTERIOR, EXPOSED: RGS
 - EXTERIOR, UNDERGROUND: PVC
 - EXTERIOR, EQUIPMENT CONNECTIONS: LFMC
6. ALL EQUIPMENT DISCONNECTS AND MANUAL MOTOR STARTERS ARE PROVIDED BY ELECTRICAL CONTRACTOR UNLESS NOTED OTHERWISE. REFER TO MECHANICAL EQUIPMENT SCHEDULES FOR UNITS PROVIDED WITH STARTERS. ELECTRICAL CONTRACTOR SHALL ASSUME RESPONSIBILITY OF DISCONNECT/STARTER INSTALLATION AND CONNECTION. MOUNT ALL DISCONNECTS AND MOTOR STARTERS IN AN ACCESSIBLE LOCATION WITHIN SIGHT OF THE LOAD SERVED.
7. ALL WALL-MOUNTED DEVICE BOXES AND FACEPLATES SHALL BE STAINLESS STEEL.
8. DEVICE MOUNTING HEIGHTS, UNLESS OTHERWISE NOTED:
 - CONVENIENCE RECEPTACLES: 18-INCHES AFF
 - LAVATORY GFCI RECEPTACLES: 48-INCHES AFF
 - EXTERIOR GFCI RECEPTACLES: 48-INCHES AFF
 - LIGHTING TOGGLE SWITCHES: 48-INCHES AFF
 - TEL/DATA SYSTEM OUTLETS: 18-INCHES AFF
 - EQUIPMENT DISCONNECT/STARTER, INTERIOR: 48-INCHES AFF
8. ALL PENETRATIONS THROUGH FLOORS, RATED WALLS AND PARTITIONS SHALL BE SEALED WITH UL APPROVED FIRE SEALANT MATERIAL TO MAINTAIN THE RATING OF SEPARATION.
9. EQUIPMENT CONNECTIONS ARE SHOWN FOR BASIS-OF-DESIGN PRODUCTS. CONTRACTOR SHALL COORDINATE ALL EQUIPMENT CONNECTIONS - INCLUDING DISCONNECTING MEANS, OVERCURRENT PROTECTION, AND WIRE SIZING - WITH SELECTED MANUFACTURERS' RECOMMENDED INSTRUCTIONS.
10. CONTRACTOR SHALL COORDINATE FINAL DEVICE LOCATIONS WITH OWNER'S PROPOSED FURNITURE LAYOUT.
11. CONTRACTOR SHALL PROVIDE ALL MOUNTING HARDWARE NECESSARY FOR A COMPLETE INSTALLATION. MOUNT EQUIPMENT AND ROUTE CONDUIT SO AS NOT TO INTERFERE WITH OPERATIONS SUCH AS DOOR SWINGS, MECHANICAL EQUIPMENT OPERATION, ETC. HARDWARE USED FOR EXTERIOR INSTALLATIONS SHALL BE RATED FOR EXTERIOR ENVIRONMENTS
12. MANUFACTURERS NAME AND MODEL NUMBERS ARE USED THROUGHOUT THE PROJECT FOR DESCRIPTIVE PURPOSES ONLY AND ARE INTENDED TO INDICATE THE STANDARD OF MATERIAL OR ARTICLES REQUIRED. DESIGN IS PREDICATED AROUND LISTED MANUFACTURERS AS NOTED ON SCHEDULES AND NOTES AND IS NOT INTENDED TO LIMIT THE CONTRACTOR TO ONE MANUFACTURER.
13. PANELBOARD SHALL HAVE APPROPRIATE ARC-FLASH LABELS INSTALLED IN ACCORDANCE WITH NFPA 70E REQUIREMENTS.
14. GROUND THE ELECTRICAL DISTRIBUTION SYSTEM IN ACCORDANCE WITH NEC ARTICLE 250 AND SHEET E-101.
15. ALL VOICE/DATA CABLING SHALL BE CAT 5. COORDINATE ALL VOICE AND DATA INSTALLATIONS WITH OWNER.
16. PROVIDE ADHESIVE LAMINATED LABELS FOR ALL DEVICES. LABELS SHALL BE BLACK LETTERING ON A WHITE BACKGROUND. LABELS SHALL INDICATE SOURCE CIRCUIT OF DEVICE AND BE LOCATED ON DEVICE WALL PLATE OR OTHER CONSPICUOUS LOCATION.

X:\162 EcoMain\162.002.dwg - Scale House with CMU Drawings\Sheets\E-001.dwg - 1/5/2017 2:32 PM - ZACH JONES

**ISSUED FOR BID
NOT FOR CONSTRUCTION**

JANUARY 5, 2017



ecomaine 64 BLUEBERRY ROAD, PORTLAND, ME			
SCALE HOUSE WITH INSULATED BLOCK CONSTRUCTION			
ELECTRICAL LEGEND, ABBREVIATIONS, AND GENERAL NOTES			
REV	DESCRIPTION	DWN	APP DATE
C	RE-ISSUED FOR BID	MRL	CBC 01/05/17
B	RE-ISSUED FOR BID	MRL	CBC 10/28/16
A	ISSUED FOR BID	MRL	CBC 9/02/16
SIZE: ANSI D		PROJECT NO: 162.002.002	
DATE: 09/02/2016		SHEET 36 OF 40	
DES BY: MRL		<h1 style="margin: 0;">E-001</h1>	
DWN BY: MRL			
CKD BY: CBC			

PLEASE NOTE: THIS DOCUMENT MAY NOT ACCURATELY REPRESENT THE FINAL DOCUMENT. ONLY AN ENGINEER, ARCHITECT OR SURVEYOR SIGNED, SEALED AND DATED PAPER COPY, PROVIDED BY THIS OFFICE, MAY BE UTILIZED FOR BIDDING OR CONSTRUCTION PURPOSES.

47A York Street
Portland, Maine 04101
207.533.7753
colbycoengineering.com