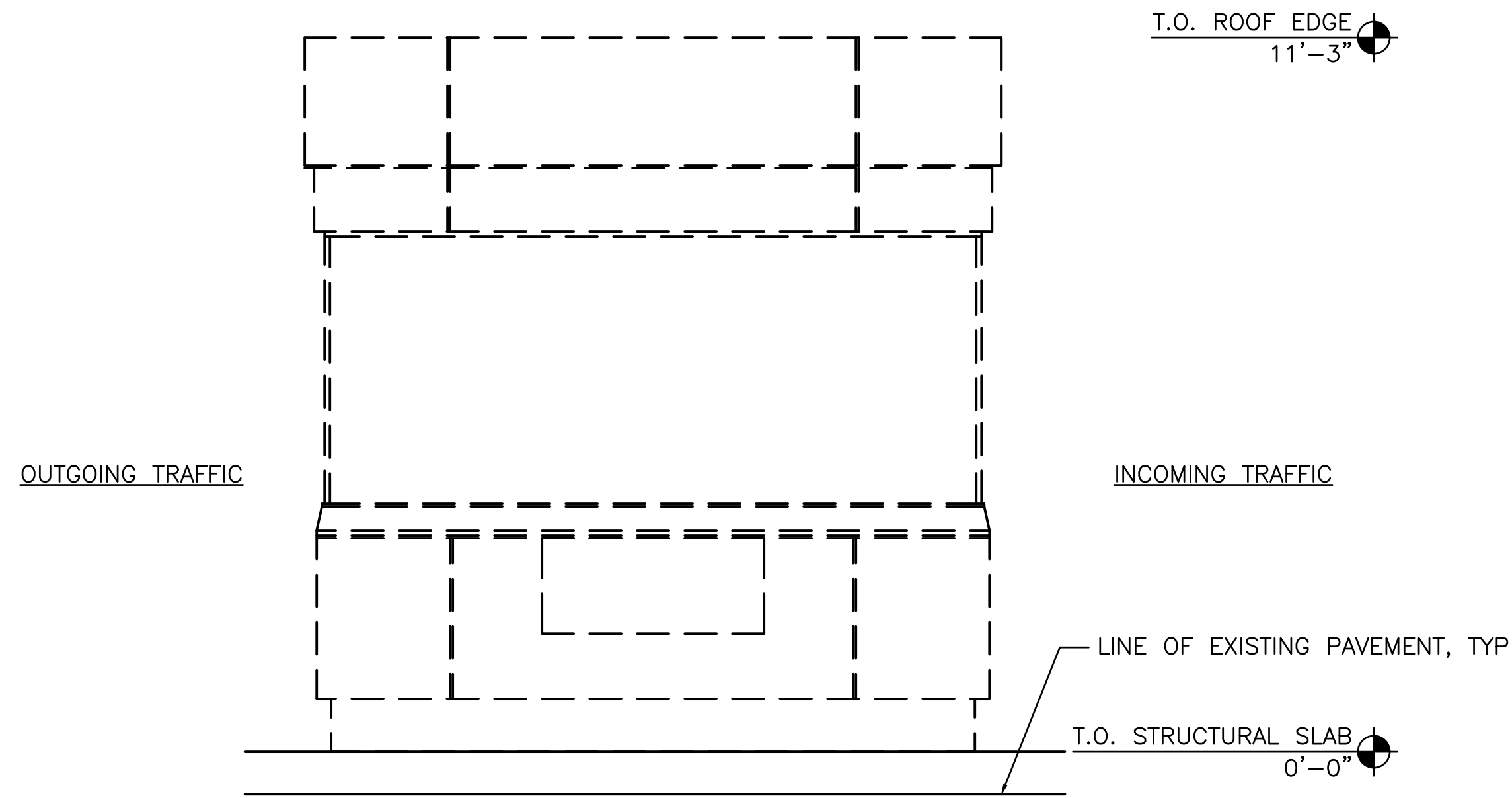


DEMOLITION LEGEND:

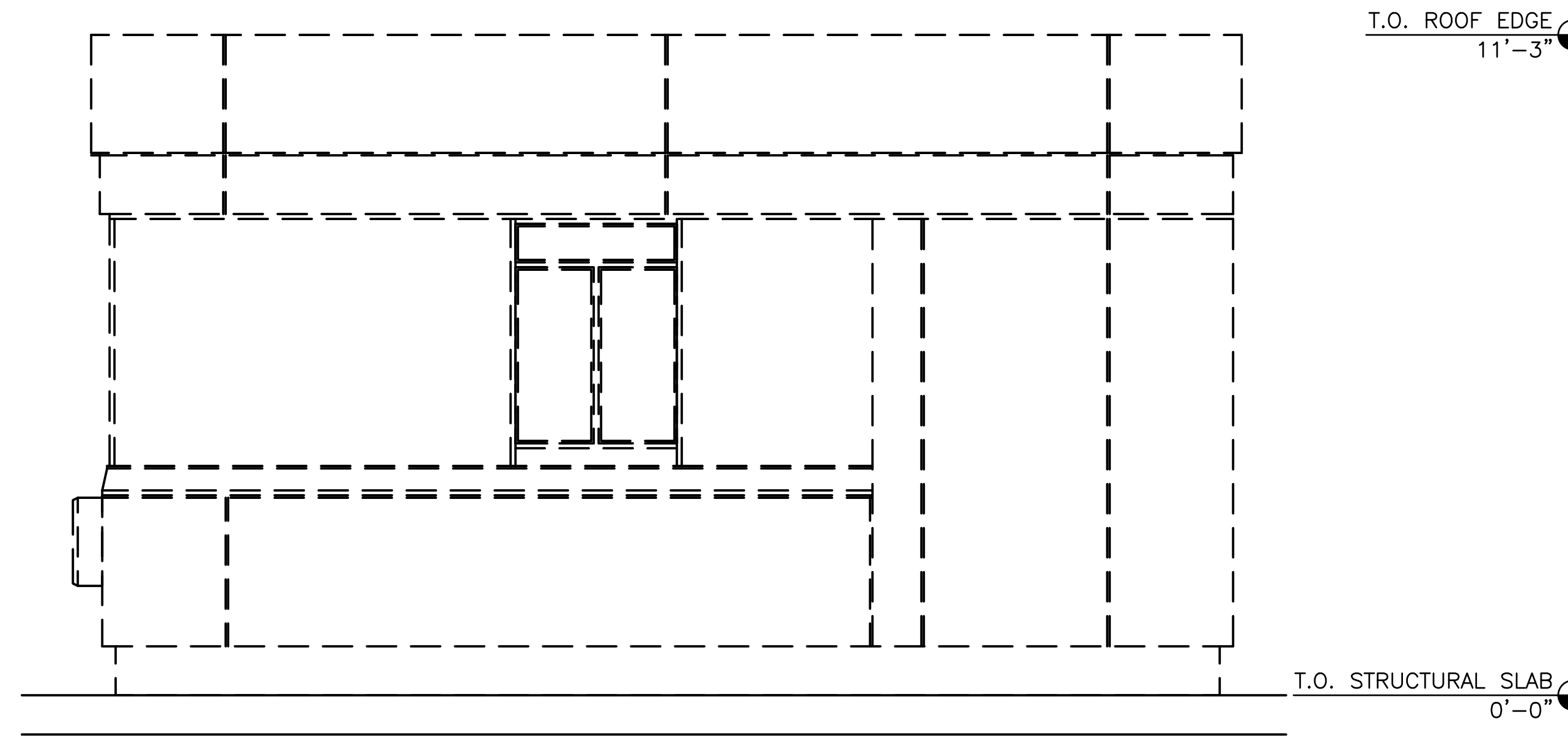
----- ITEMS TO BE DEMOLISHED

NOTES:

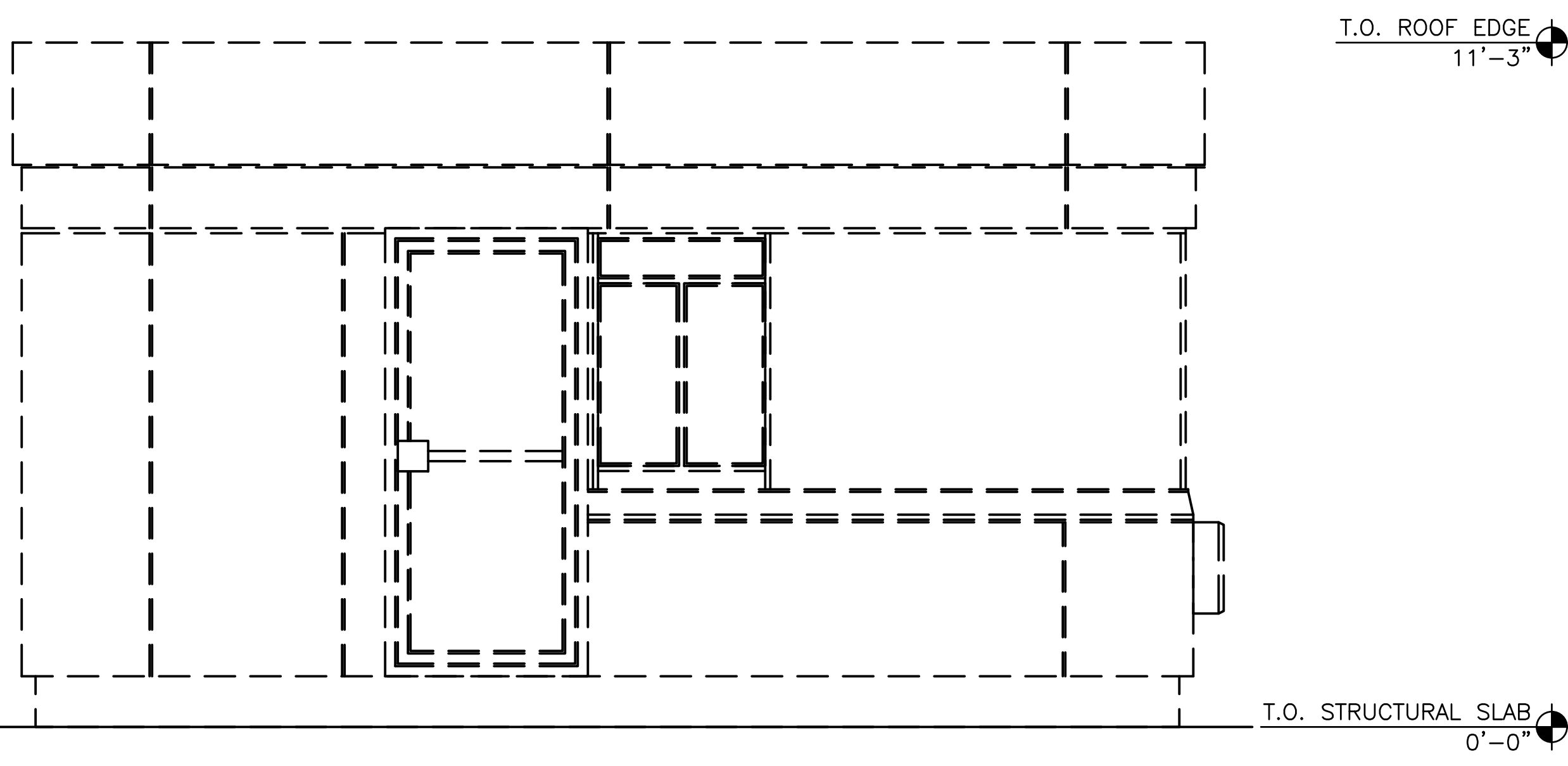
1. CONTRACTOR TO REMOVE THE EXISTING SCALE HOUSE BUILDING IN ITS ENTIRETY IN PREPARATION FOR THE NEW SCALE HOUSE INSTALLATION. COORDINATE WITH ALL TRADES. SEE AD-101 FOR DEMO KEY NOTES.
2. REMOVE ALL EXISTING SITE EQUIPMENT AS SHOWN ON THE CIVIL DRAWINGS IN PREPARATION FOR INSTALLATION OF NEW SCALE HOUSE BUILDING. COORDINATE WITH ALL TRADES.
3. RAMP NOT SHOWN ON ELEVATIONS FOR CLARITY. SEE DEMOLITION PLANS FOR RAMP REMOVALS.
4. REMOVE ALL EXISTING LIGHTING, CAMERAS, SIGNAGE AND EQUIPMENT FROM THE BUILDING FACADE AND RETURN TO ECOMAINE. COORDINATE WITH ALL TRADES.



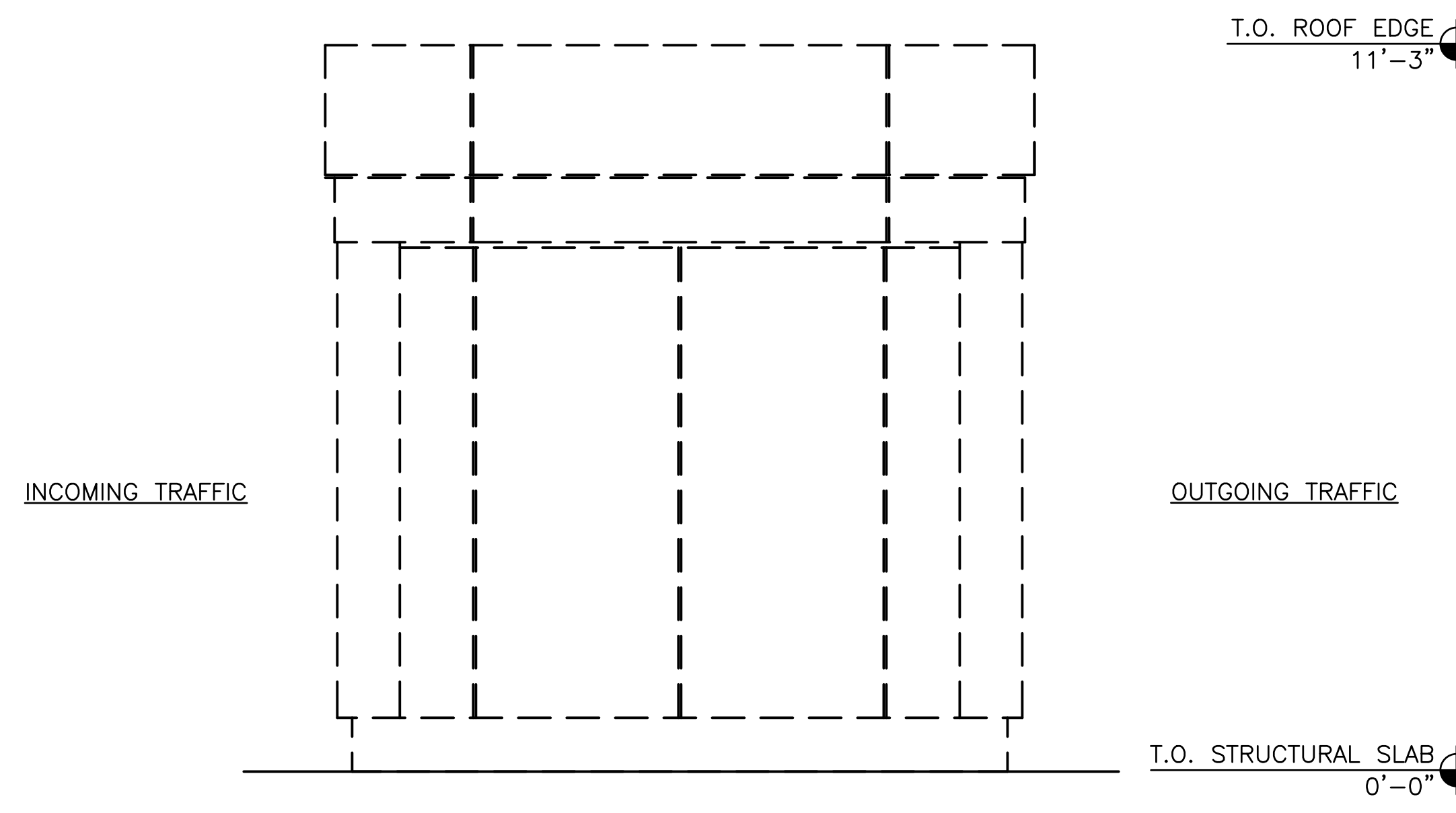
SOUTH ELEVATION
SCALE: 1/2" = 1'-0"



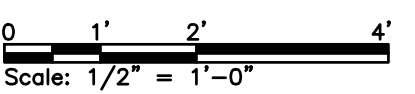
EAST ELEVATION
SCALE: 1/2" = 1'-0"



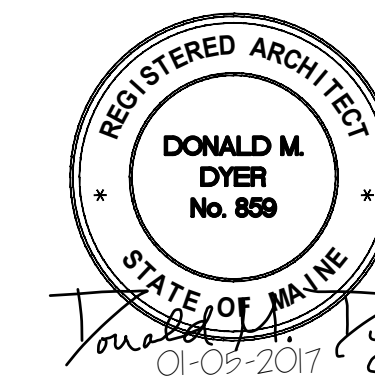
WEST ELEVATION
SCALE: 1/2" = 1'-0"



NORTH ELEVATION
SCALE: 1/2" = 1'-0"



ISSUED FOR BID
NOT FOR CONSTRUCTION
JANUARY 5, 2017



						ecomaine 64 BLUEBERRY ROAD, PORTLAND, ME	
						SCALE HOUSE WITH INSULATED BLOCK CONSTRUCTION	
						DEMOLITION EXTERIOR ELEVATIONS	
REV	DESCRIPTION	DWN	APP	DATE	SIZE:	PROJECT NO.	DRAWING NO.
C	RE-ISSUED FOR BID	BLB	CBC	01/05/17	ANSI D	162.002.002	AD-201
B	RE-ISSUED FOR BID	BLB	CBC	10/28/16	DATE: 09/02/2016	SHEET	
A	ISSUED FOR BID	BLB	CBC	9/02/16	DES BY: BLB	10 OF 40	
					DWN BY: BLB		
					CKD BY: DMD		

PLEASE NOTE: THIS DOCUMENT MAY NOT ACCURATELY REPRESENT THE FINAL DOCUMENT. ONLY AN ENGINEER, ARCHITECT OR SURVEYOR SIGNED, SEALED AND DATED PAPER COPY, PROVIDED BY THIS OFFICE, MAY BE UTILIZED FOR BIDDING OR CONSTRUCTION PURPOSES.

Colby Company
engineering
47A York Street
Portland, Maine 04101
207.533.7753
colbycoengineering.com