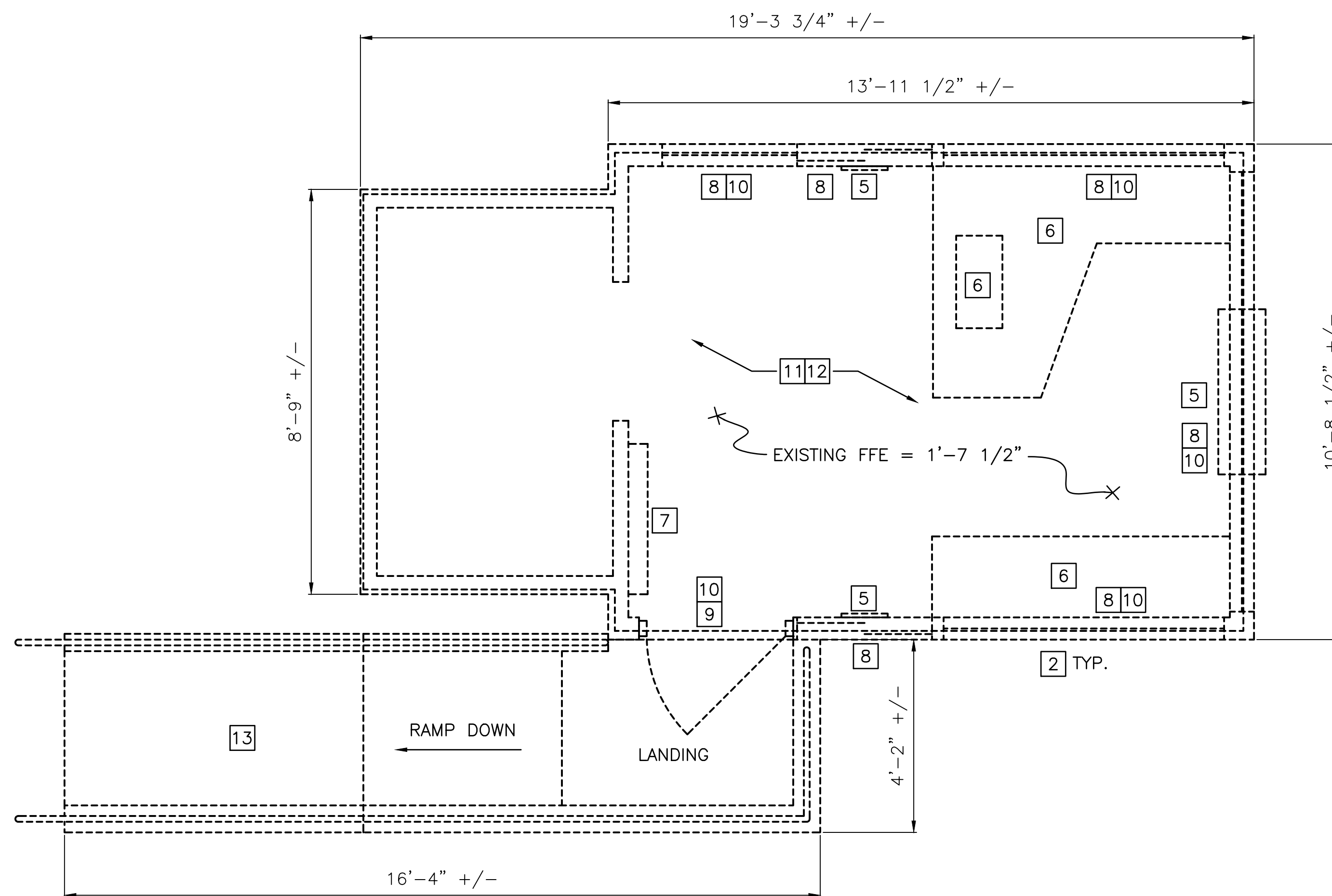
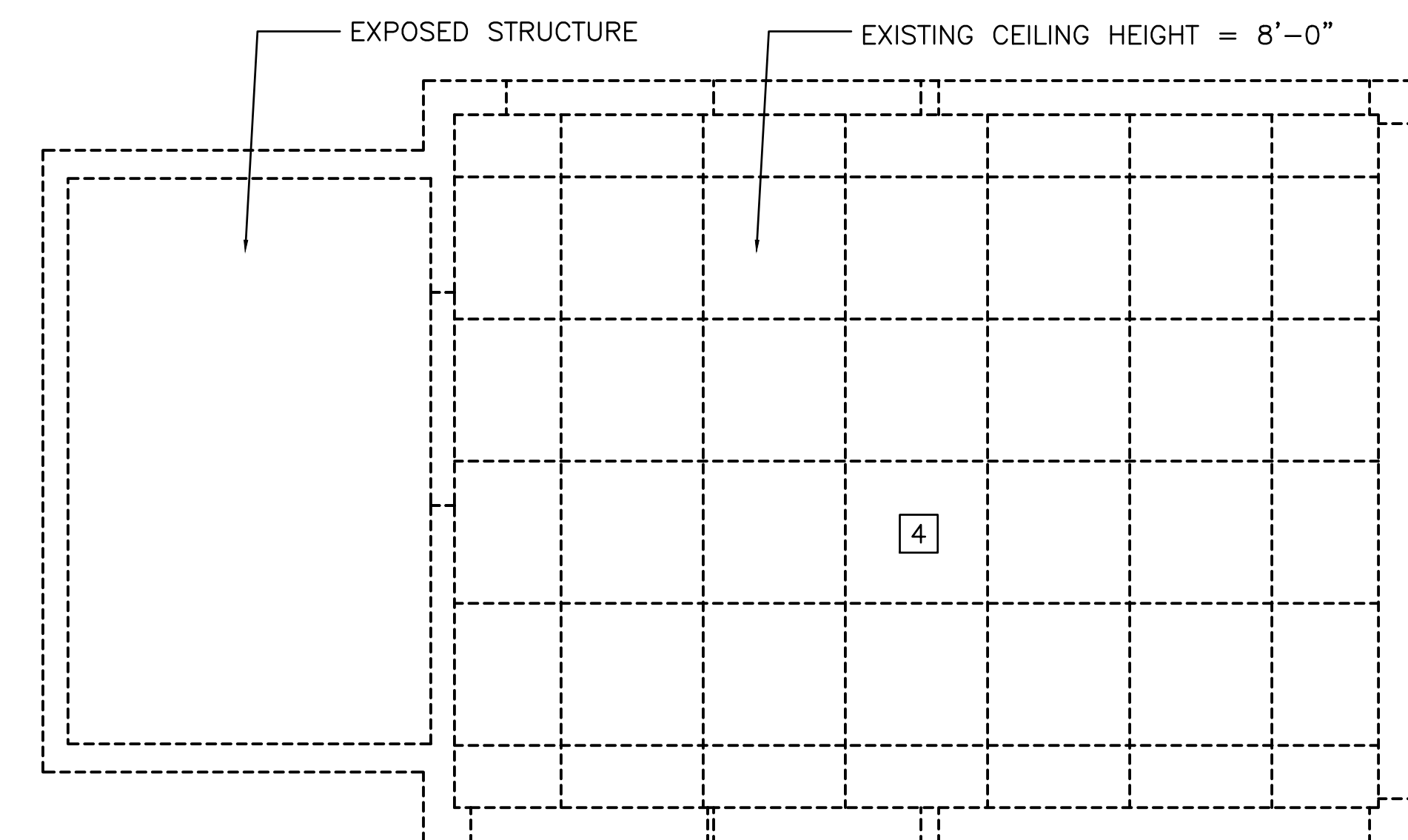


DEMOLITION ROOF PLAN
SCALE: 1/2" = 1'-0"



DEMOLITION FLOOR PLAN
SCALE: 1/2" = 1'-0"



DEMOLITION REFLECTED CEILING PLAN
SCALE: 1/2" = 1'-0"

DEMOLITION LEGEND:

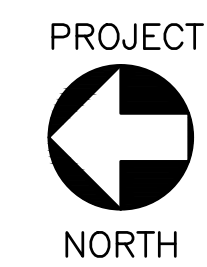
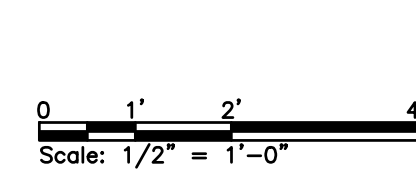
----- ITEMS TO BE DEMOLISHED

NOTES:

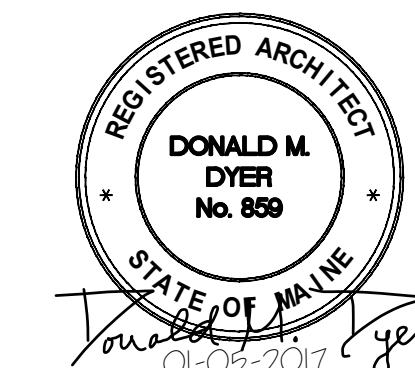
- CONTRACTOR TO REMOVE THE EXISTING SCALE HOUSE BUILDING IN ITS ENTIRETY IN PREPARATION FOR THE NEW SCALE HOUSE INSTALLATION. COORDINATE WITH ALL TRADES.
- REMOVE ALL EXISTING SITE EQUIPMENT AS SHOWN ON THE CIVIL DRAWINGS IN PREPARATION FOR INSTALLATION OF NEW SCALE HOUSE BUILDING. COORDINATE WITH ALL TRADES.

DEMOLITION KEYED NOTES:

- REMOVE ALL EXISTING ROOF MATERIALS, INCLUDING BUT NOT LIMITED TO, METAL ROOF COPING, ROOF MEMBRANE, ROOF BOARD, ROOF INSULATION, ANY ASSOCIATED ROOF EQUIPMENT.
- REMOVE EXISTING EXTERIOR INSULATED METAL PANEL SIDING SYSTEM, WOOD SHEATHING AND ASSOCIATED ATTACHMENTS COMPLETE FROM PERIMETER OF BUILDING.
- REMOVE EXISTING METAL ENTRY CANOPY AND ASSOCIATED FRAMING.
- REMOVE EXISTING METAL DROP CEILING PANELS AND GRID CEILING SYSTEM AS WELL AS ASSOCIATED DROP LIGHT FIXTURES.
- REMOVE EXISTING HVAC EQUIPMENT.
- REMOVE EXISTING WOOD CASEWORK, ASSOCIATED COUNTERS AND HARDWARE COMPLETE. REMOVE AND SALVAGE EXISTING REFRIGERATOR AND MICROWAVE AND RETURN ECOMAINE.
- REMOVE EXISTING ELECTRICAL EQUIPMENT.
- REMOVE EXISTING FIXED AND OPERABLE WINDOWS AND ASSOCIATED TRANSOMS, FRAMES AND HARDWARE COMPLETE.
- REMOVE EXISTING DOORS, FRAMES AND HARDWARE COMPLETE.
- REMOVE EXISTING WINDOW TREATMENTS COMPLETE.
- REMOVE EXISTING DIAMOND PLATE WAINSCOT COMPLETE.
- REMOVE EXISTING VCT FLOOR TILES AND BASE COMPLETE.
- REMOVE EXISTING CONCRETE RAMP, LANDING, ASSOCIATED PIPE RAILS AND HARDWARE COMPLETE.



ISSUED FOR BID
NOT FOR CONSTRUCTION
JANUARY 5, 2017



REV	DESCRIPTION	DWN	APP	DATE
C	RE-ISSUED FOR BID	BLB	CBC	01/05/17
B	RE-ISSUED FOR BID	BLB	CBC	10/28/16
A	ISSUED FOR BID	BLB	CBC	9/02/16

ecomaine 64 BLUEBERRY ROAD, PORTLAND, ME	
SCALE HOUSE WITH INSULATED BLOCK CONSTRUCTION	
DEMOLITION FLOOR PLAN, REFLECTED CEILING PLAN AND ROOF PLAN	

PLEASE NOTE: THIS DOCUMENT MAY NOT ACCURATELY REPRESENT THE FINAL DOCUMENT. ONLY AN ENGINEER, ARCHITECT OR SURVEYOR SIGNED, SEALED AND DATED PAPER COPY, PROVIDED BY THIS OFFICE, MAY BE UTILIZED FOR BIDDING OR CONSTRUCTION PURPOSES.

SIZE: ANSI D	PROJECT NO. 162.002.002
DATE: 09/02/2016	DRAWING NO. AD-101
DWG BY: BLB	SHEET 9 OF 40
DWN BY: BLB	
CKD BY: DMD	

