

## ROOM FINISH SCHEDULE

ROOM NUMBER	ROOM NAME	FLOOR MATERIAL	FLOOR FINISH	BASE/WAINSCOT	FINISH	HEIGHT	NORTH WALL	FINISH	EAST WALL	FINISH	SOUTH WALL	FINISH	WEST WALL	FINISH	CEILING MATERIAL	FINISH	CEILING HEIGHT	REMARKS
101	VESTIBULE	QUARRY TILE	-	QUARRY TILE	-	0'-6"	GYPSUM	PAINT	GYPSUM	PAINT	GYPSUM	PAINT	GYPSUM	PAINT	ACOUSTICAL PANELS	-	8'-0"	
102	KITCHEN	QUARRY TILE	-	QUARRY TILE	-	0'-6"	GYPSUM	PAINT	GYPSUM	PAINT	GYPSUM	PAINT	GYPSUM	PAINT	ACOUSTICAL PANELS	-	8'-0"	
103	OFFICE	QUARRY TILE	-	QUARRY TILE	-	2'-6"	GYPSUM	PAINT	GYPSUM	PAINT	GYPSUM	PAINT	GYPSUM	PAINT	ACOUSTICAL PANELS	-	8'-0"	
104	UNISEX BATHROOM	CERAMIC TILE	-	-	-	-	CMU, PAINT	-	CMU, PAINT	-	CMU, PAINT	-	CMU, PAINT	-	GYPSUM	PAINT	8'-0"	
105	COAT CLOSET	QUARRY TILE	-	QUARRY TILE	-	0'-6"	GYPSUM	PAINT	GYPSUM	PAINT	GYPSUM	PAINT	GYPSUM	PAINT	GYPSUM	PAINT	8'-0"	
106	STORAGE CLOSET	QUARRY TILE	-	QUARRY TILE	-	0'-6"	GYPSUM	PAINT	GYPSUM	PAINT	GYPSUM	PAINT	GYPSUM	PAINT	GYPSUM	PAINT	8'-0"	

**NOTES:**

1. CONTRACTOR TO VERIFY THROAT SIZES OF ALL DOORS.
2. CONTRACTOR TO PROVIDE AND INSTALL WINDOWS AND DOORS PER MANUFACTURER'S REQUIREMENTS.
3. SEE A-001 FOR SPECIFICATIONS.

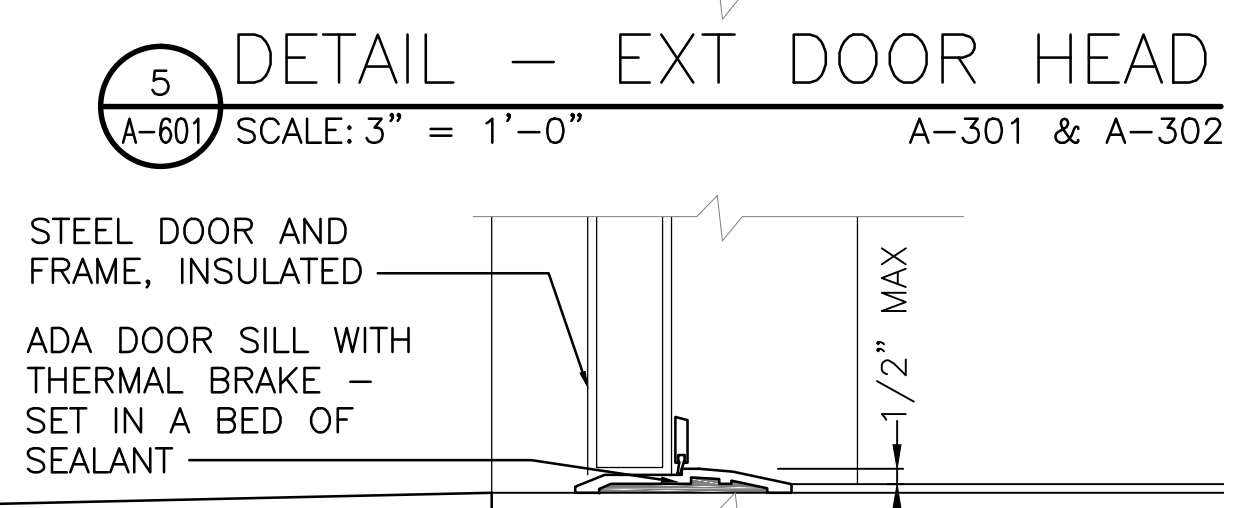
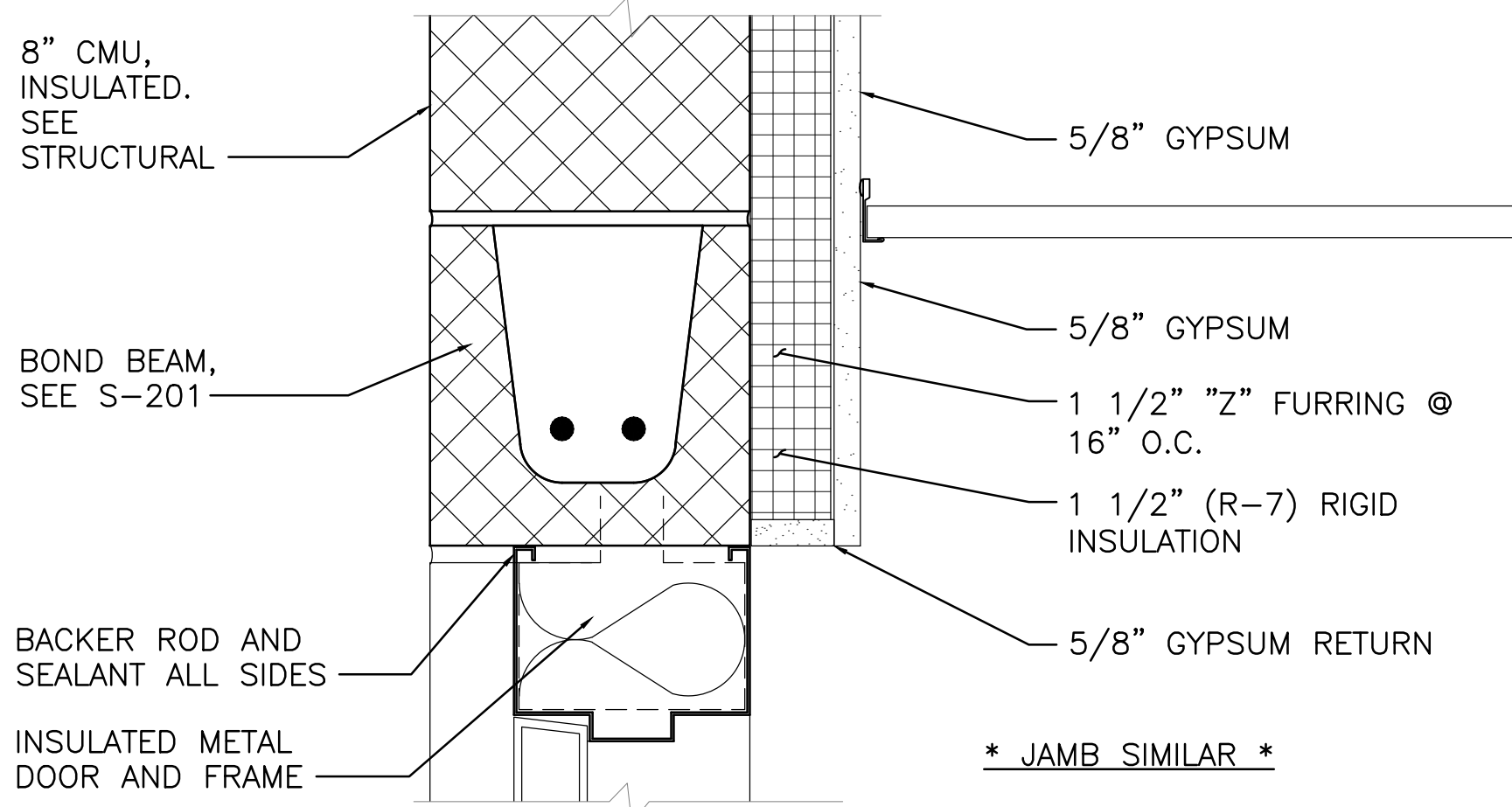
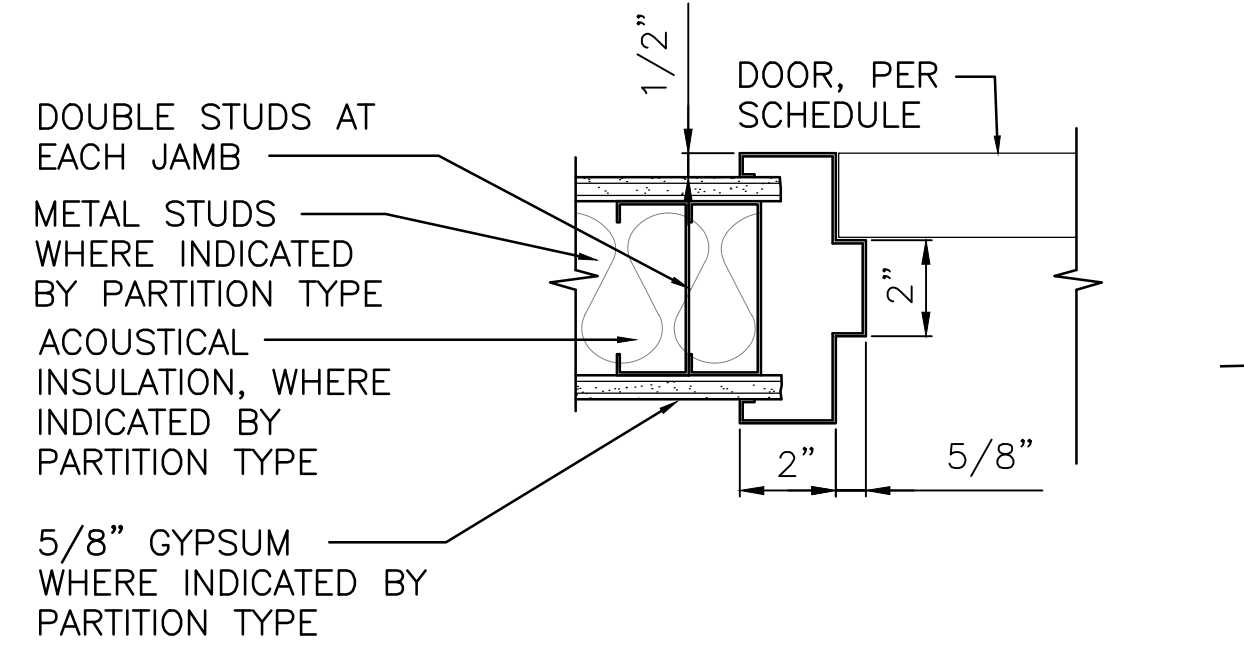
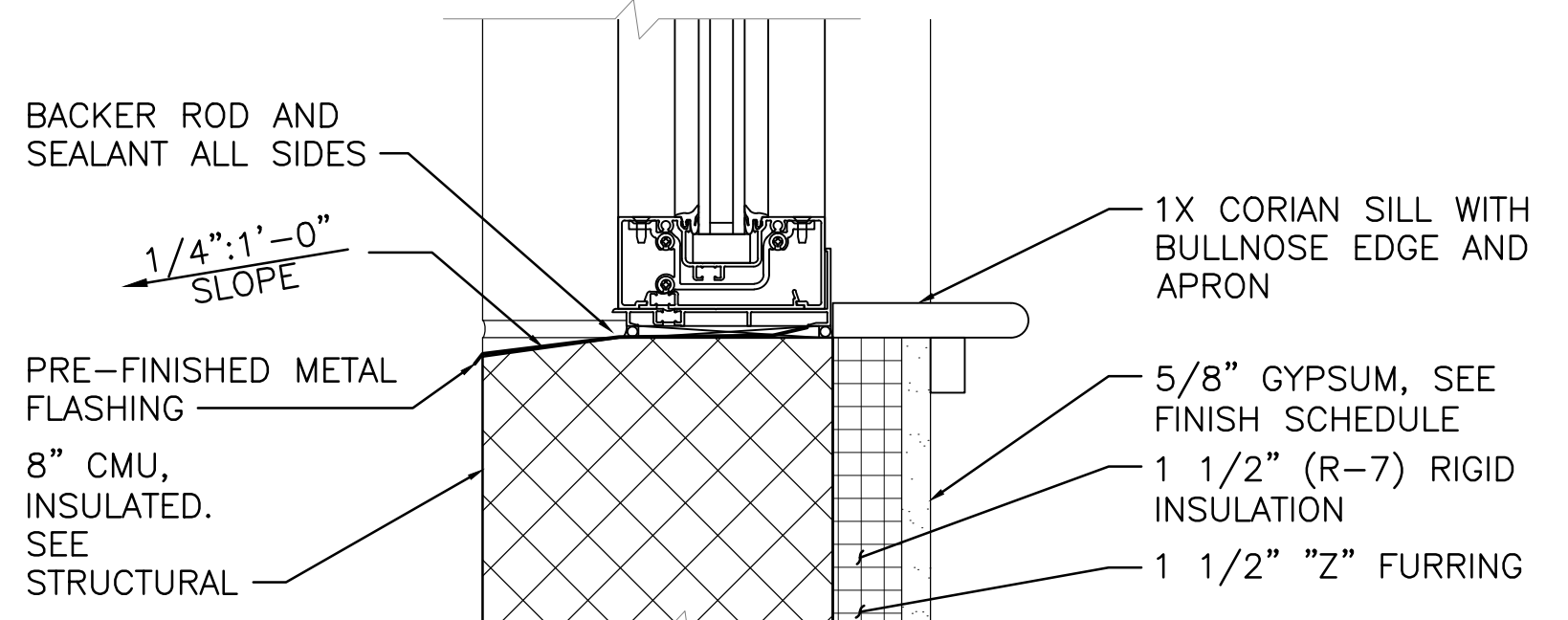
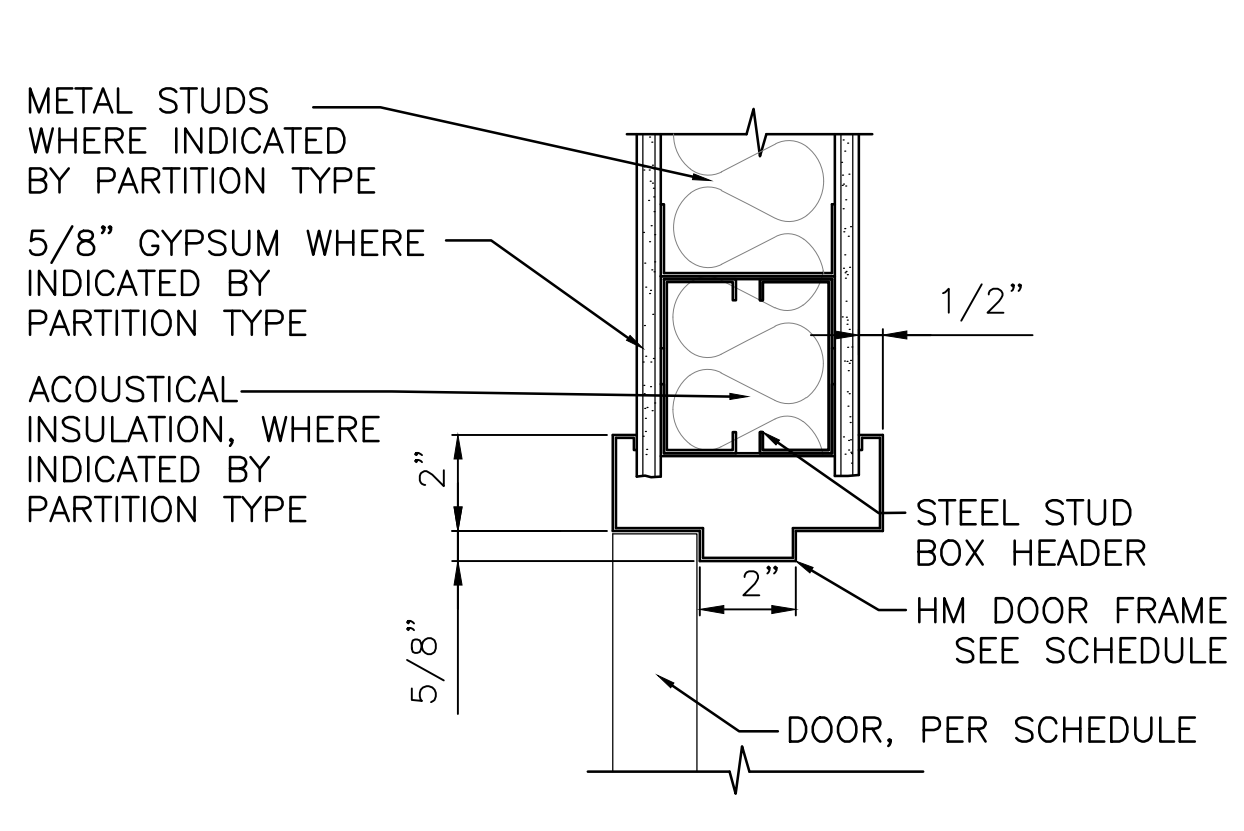
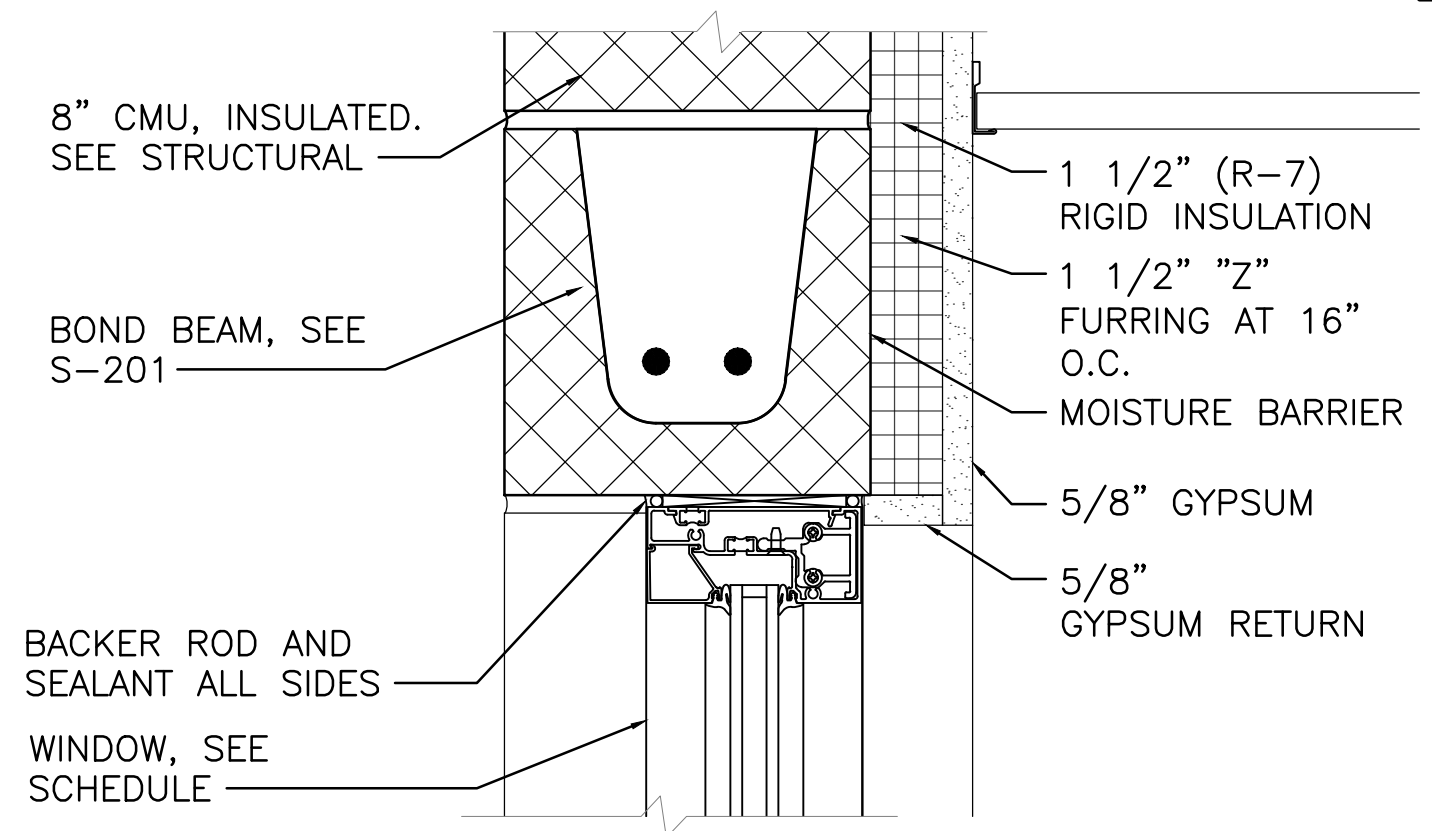
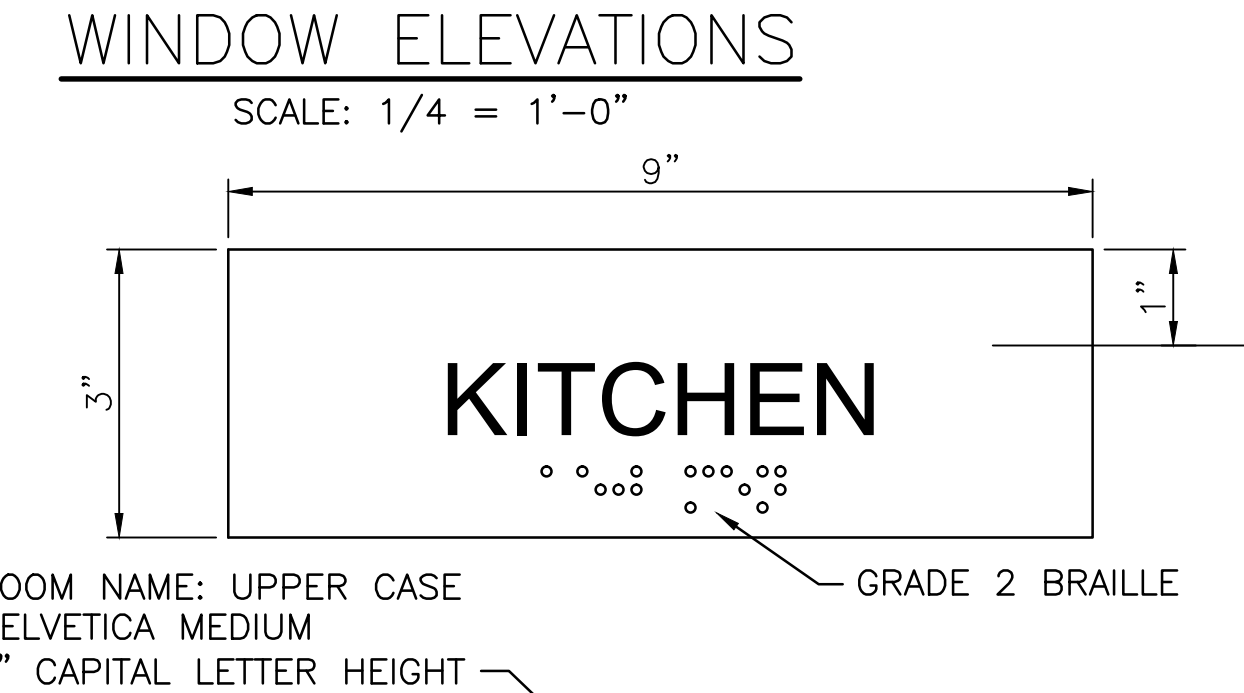
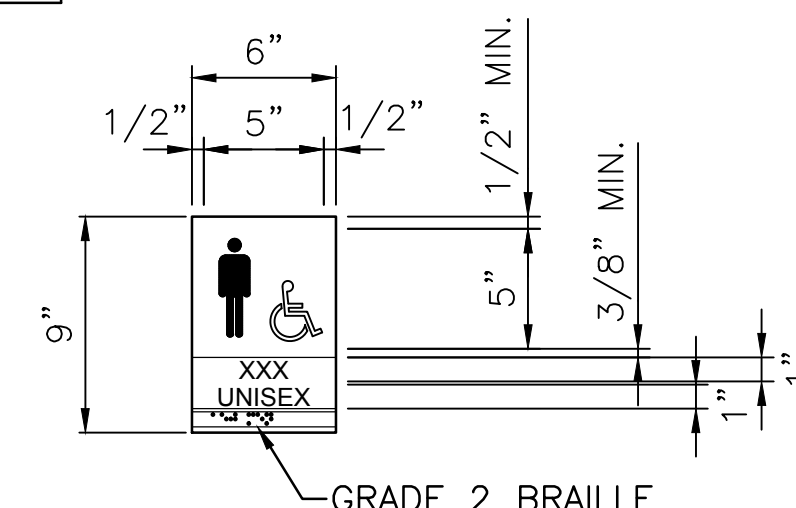
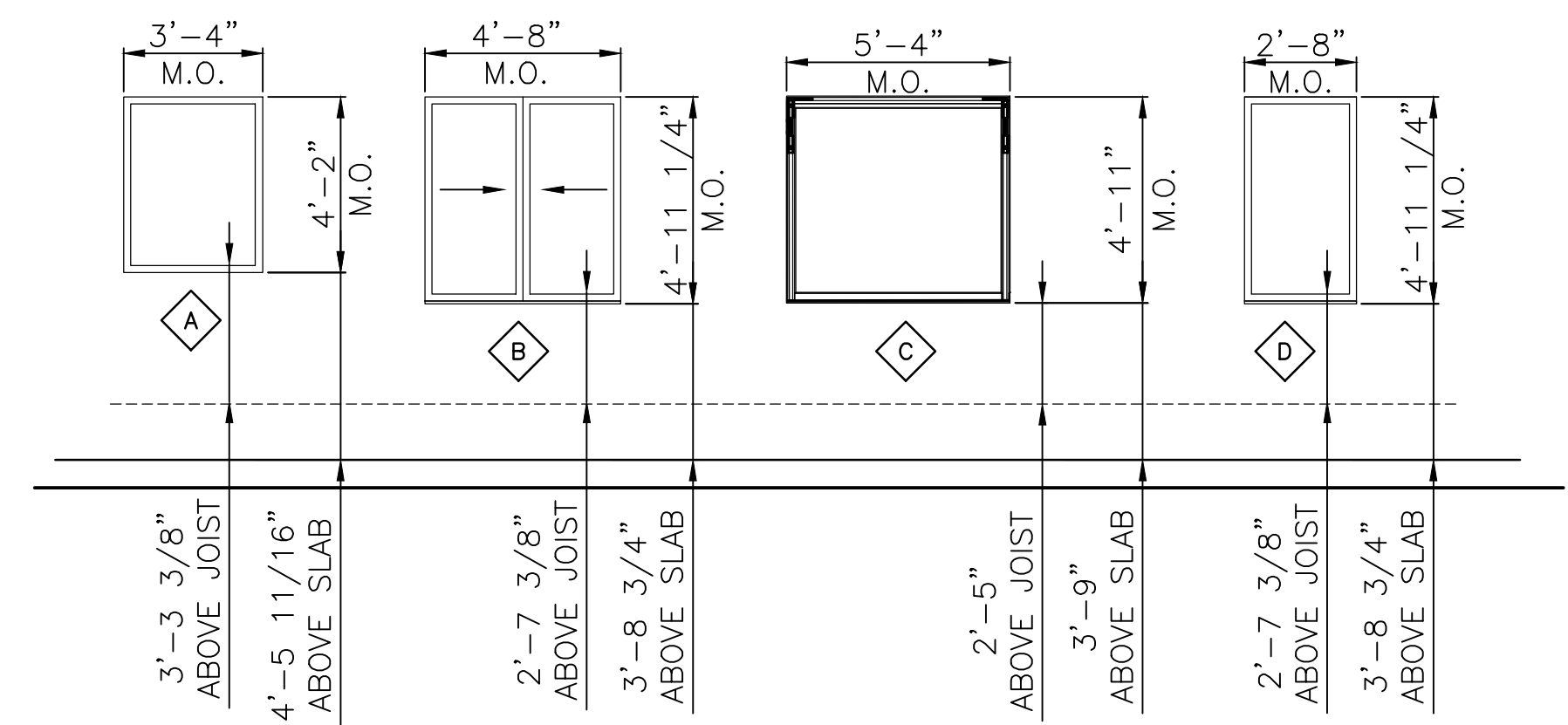
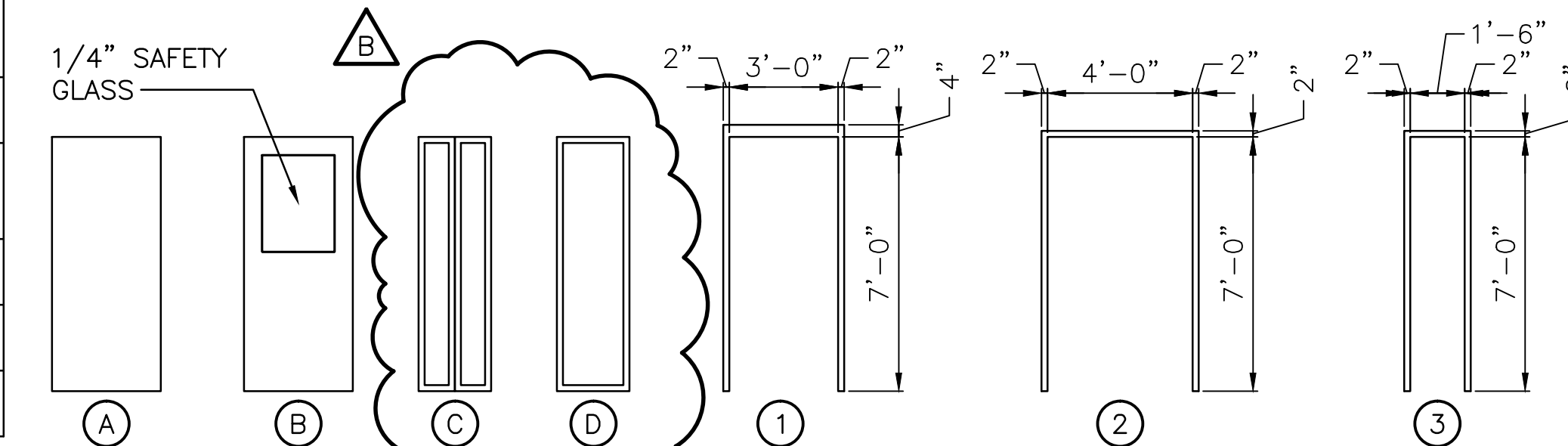
## DOOR SCHEDULE

DOOR #	DESCRIPTION:	SIZE: W X H	THICKNESS	DOOR MATERIAL	DOOR TYPE	FIRE RATING	FRAME MATERIAL	FRAME TYPE	HWDR SET	DETAILS
101	EXTERIOR TO VESTIBULE	3'-0" X 7'-0"	0'-1 3/4"	INSULATED METAL PAINT	B	-	INSULATED METAL PAINT	1	SET 1	5/A-601 & 6/A-601
104A	VESTIBULE TO UNISEX BATHROOM	3'-0" X 7'-0"	0'-1 3/4"	INSULATED METAL PAINT	A	-	HOLLOW METAL PAINT	1	SET 2	3/A-601
104B	EXTERIOR TO UNISEX BATHROOM	3'-0" X 7'-0"	0'-1 3/4"	INSULATED METAL	A	-	INSULATED METAL PAINT	1	SET 3	5/A-601 & 6/A-601
105	VESTIBULE TO COAT CLOSET	1'-6" X 7'-0"	0'-1 3/4"	WOOD PAINT	D	-	WOOD PAINT	3	SET 4	3/A-601 & 4/A-601
106	VESTIBULE TO STORAGE CLOSET	(2) -2'-0" X 7'-0"	0'-1 3/4"	WOOD PAINT	C	-	WOOD PAINT	2	SET 5	3/A-601 & 4/A-601

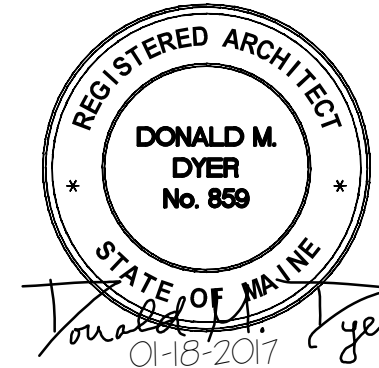
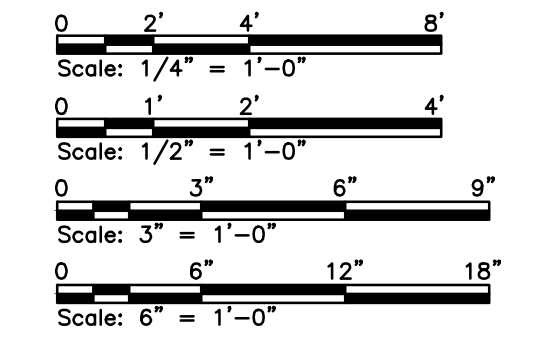
**NOTE:**  
SEE SHEET A-001 FOR HARDWARE SETS

## WINDOW SCHEDULE

TYPE	MATERIAL	REQUIREMENTS	OPERATION	M.O. SIZE: W X H	HEAD DETAIL	SILL DETAIL	REMARKS
A	ALUM	-	FIXED	3'-4" X 4'-2"	1/A-601	2/A-601	
B	ALUM	AUTOMATIC	SLIDING	4'-8" X 4'-11 1/4"	1/A-601	2/A-601	SEE ELECTRICAL DRAWING FOR REMOTE/KEYPAD ACCESS OF DOORS AND ELECTRIFICATION OF SLIDING WINDOWS
C	ALUM	TRIPLE GLASS WITH GRADIENT TINT	FIXED	(2) 5'-4" X 4'-11"	1/A-601	2/A-601	GRADIENT TINT IS TO HAVE THE DARKER TINT TO THE TOP PORTION OF THE WINDOW.
D	ALUM	TRIPLE GLASS WITH GRADIENT TINT	FIXED	(2) 2'-8" X 4'-11 1/4"	1/A-601	2/A-601	GRADIENT TINT IS TO HAVE THE DARKER TINT TO THE TOP PORTION OF THE WINDOW.

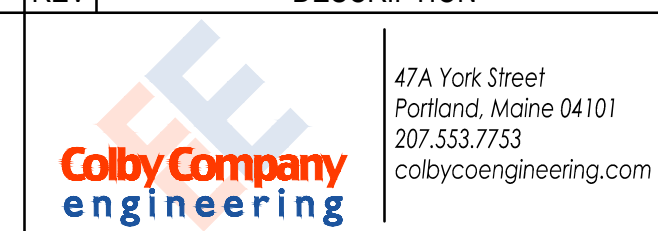


**ISSUED FOR BID**  
NOT FOR CONSTRUCTION  
JANUARY 18, 2017



<b>ecomaine</b> 64 BLUEBERRY ROAD, PORTLAND, ME			
<b>SCALE HOUSE WITH INSULATED BLOCK CONSTRUCTION</b>			
<b>SCHEDULES AND DETAILS</b>			
REV	DESCRIPTION	DWN	APP DATE
D	RE-ISSUED FOR BID	BLB	CBC 01/18/17
C	RE-ISSUED FOR BID	BLB	CBC 01/05/17
B	RE-ISSUED FOR BID	BLB	CBC 10/28/16
A	ISSUED FOR BID	BLB	CBC 9/02/16
SIZE:	ANSI D	PROJECT NO.	DRAWING NO.
DATE:	09/02/2016	162.002.002	
DES BY:	BLB	SHEET	
DWN BY:	BLB	18 OF 40	
CKD BY:	DMD		

PLEASE NOTE: THIS DOCUMENT MAY NOT ACCURATELY REPRESENT THE FINAL DOCUMENT. ONLY AN ENGINEER, ARCHITECT OR SURVEYOR SIGNED, SEALED AND DATED PAPER COPY, PROVIDED BY THIS OFFICE, MAY BE UTILIZED FOR BIDDING OR CONSTRUCTION PURPOSES.



# A-601

X:\162 EcoMaine\162.002.002 - Scale House with CMU Drawings\Sheets\A-601.dwg - 1/18/2017 11:15 AM - BRENDA BRAUN