

**SPECIFICATIONS:**

**DIVISION 4: UNIT MASONRY**

SEE S-001 FOR MASONRY NOTES.

**DIVISION 6: WOOD, PLASTICS & COMPOSITES**

CABINETS – PLASTIC-LAMINATE-FACED ARCHITECTURAL CABINETS, PREMIUM GRADE. COLOR: TO BE SELECTED BY THE OWNER FROM THE MANUFACTURER'S STANDARD COLORS.

CONTRACTOR TO PROVIDE WOOD FURRING, BLOCKING, SHIMS, AND HANGING STRIPS AS REQUIRED FOR INSTALLATION.

**DIVISION 7: THERMAL & MOISTURE PROTECTION**

ETHYLENE-PROPYLENE-DIENE-MONOMER (EPDM) ROOFING – ASTM D 4637, TYPE II, SCRIM OR FABRIC INTERNALLY REINFORCED, UNIFORM, FLEXIBLE SHEET. THICKNESS OF 60 MILS, NOMINAL. EXPOSED FACE COLOR TO BE BLACK.

COVER BOARD: ASTM C 1177/C 1177M, GLASS-MAT, WATER-RESISTANT GYPSUM SUBSTRATE, 5/8 INCH THICK, FACTORY PRIMED.

RIGID INSULATION – POLYISOCYANURATE FOAM-PLASTIC BOARD, POLYISOCYANURATE BOARD, FOIL FACED: ASTM C 1289, FOIL FACED, TYPE I, CLASS 1 OR 2. FIRE PROPAGATION CHARACTERISTICS: PASSES NFPA 285 TESTING AS PART OF AN APPROVED ASSEMBLY.

SILICONE JOINT SEALANT – PROVIDE JOINT SEALANTS, BACKINGS, AND OTHER RELATED MATERIALS THAT ARE COMPATIBLE WITH ONE ANOTHER AND WITH JOINT SUBSTRATES UNDER CONDITIONS OF SERVICE AND APPLICATION, AS DEMONSTRATED BY JOINT-SEALANT MANUFACTURER, BASED ON TESTING AND FIELD EXPERIENCE.

S. NS, 100/50, NT: SINGLE-COMPONENT, NONSAG, PLUS 100 PERCENT AND MINUS 50 PERCENT MOVEMENT CAPABILITY, NONTRAFFIC-USE, NEUTRAL-CURING SILICONE JOINT SEALANT; ASTM C 920, TYPE S, GRADE NS, CLASS 100/50, USE NT.

VAPOR BARRIER – VAPOR-RETARDING NONBITUMINOUS SHEET: MINIMUM 10-MIL THICK, SELF-ADHERING SHEET CONSISTING OF 5 MILS OF AIR-BARRIER FILM AND A 5-MIL THICK, ACRYLIC ADHESIVE WITH RELEASE LINER ON ADHESIVE SIDE AND FORMULATED FOR APPLICATION WITH PRIMER THAT COMPLIES WITH VOC LIMITS.

PRE-FINISHED METAL FLASHING – SHALL WITHSTAND WIND LOADS, STRUCTURAL MOVEMENT, THERMALLY INDUCED MOVEMENT, AND EXPOSURE TO WEATHER WITHOUT FAILURE DUE TO DEFECTIVE MANUFACTURE, FABRICATION, INSTALLATION, OR OTHER DEFECTS IN CONSTRUCTION. COMPLETED SHEET METAL FLASHING AND TRIM SHALL NOT RATTLE, LEAK, OR LOOSEN, AND SHALL REMAIN WATERTIGHT.

STAINLESS-STEEL SHEET: ASTM A 240/A 240M, TYPE 304, DEAD SOFT, FULLY ANNEALED; WITH SMOOTH, FLAT SURFACE. FINISH: 2D (DULL, COLD ROLLED).

**DIVISION 8: OPENINGS**

DOORS – AS INDICATED IN THE DOOR SCHEDULE, SEE A-601

CECO DOOR – TRIO E – PHYSICAL PERFORMANCE: THERMAL BREAK FRAME – R-VALUE 3.4. INJECTED WITH POLYURETHANE FOAM. 16-GAUGE COLD ROLLED A90 OR G90 GALVANIZED STEEL. COLD ROLLED STEEL SHEET: COMMERCIAL STEEL, TYPE B. MEET ANSI A250.4, LEVEL A, CLASS 1. PROVIDE REINFORCING FOR HARDWARE. EDGE CONSTRUCTION TO BE MECHANICALLY INTERLOCKED, HEMMED VERTICAL EDGE SEAMS. COLORSTYLE FACTORY PRE-FINISH. COLOR: TO BE SELECTED BY THE OWNER FROM THE MANUFACTURER'S STANDARD COLORS.

FRAMES – METALLIC-COATED STEEL SHEET, MINIMUM THICKNESS OF 0.053 INCH, WITH MINIMUM G60 OR A60 COATING. COLD ROLLED STEEL SHEET: COMMERCIAL STEEL, TYPE B. COLORS: TO BE SELECTED BY THE OWNER FROM THE MANUFACTURER'S STANDARD COLORS.

FRAMES SHALL BE TREATED WITH A RUST INHIBITIVE PRIMER AND SHALL BE BONDERIZED AND FINISHED WITH ONE COAT OF BAKED-ON-PRIMER. COLORS: TO BE SELECTED BY THE OWNER FROM THE MANUFACTURER'S STANDARD COLORS.

DOOR HARDWARE:

- SET 1: DOOR 101
- 3 – HINGES
- 1 – CLOSER
- 1 – EXIT DEVICE
- 1 – LOCKSET (EGRESS FUNCTION)
- WEATHER STRIPPING AT HEAD AND JAMBS
- 1 THRESHOLD
- 1 DOOR SWEEP
- 3 – SILENCERS
- 1 – KICK PLATE
- 1 – WALL STOP

- SET 2: DOOR 104A
- 3 – HINGES

- 1 – CLOSER
- 1 – LOCKSET (PRIVACY)
- 1 – KICKPLATE
- 1 – WALL STOP
- 3 – SILENCERS
- NOTE – SEE ELECTRICAL DRAWINGS FOR ADDITIONAL ACCESS CONTROL INFORMATION.

- SET 3: DOOR 104B
- 3 – HINGES
- 1 – CLOSER
- 1 – LOCKSET (PRIVACY)
- WEATHER STRIPPING AT HEAD AND JAMBS
- 1 – THRESHOLD
- 1 – DOOR SWEEP
- 1 – KICKPLATE
- 1 – WALL STOP
- 3 – SILENCERS
- NOTE – SEE ELECTRICAL DRAWINGS FOR ADDITIONAL ACCESS CONTROL INFORMATION.

- SET 4: DOOR 105
- 6 – HINGES
- 1 – SET OF PUSH/PULL
- 1 – WALL STOP

- SET 5: DOOR 106
- 3 – HINGES
- 1 – SET OF PUSH/PULL

WINDOWS – AS INDICATED IN THE WINDOW SCHEDULE.

KAWNEER TRIFAB VG 451T CENTER – THERMALLY BROKEN ALUMINUM STORE FRONT WINDOW. POWDER COAT TO MEET AAMA 2604. COLORS: AS SELECTED BY THE OWNER FROM THE MANUFACTURER'S STANDARD COLORS.

WINDOW TREATMENT – GRADIENT TINT (DARK AT TOP OF WINDOW AND GRADES TO LIGHTER AT BOTTOM OF WINDOW). COLORS: AS SELECTED BY THE OWNER FROM THE MANUFACTURER'S STANDARD COLORS.

KAWNEER VERSOLEIL SUN SHADE – OUTRIGGER SYSTEM FOR STOREFRONT. OUTRIGGER BLADES TO BE WAVE OPTION. EXTERIOR EXTRUDED-ALUMINUM, CLEAR ANODIZED: AA-M-10C-22A-31, ARCHITECTURAL CLASS II, COMPLY WITH AAMA 607.1.

**DIVISION 9: FINISHES**

FINISHES AS INDICATED IN THE FINISH SCHEDULE, SEE A-601

GYPSUM BOARD – 5/8" MOISTURE AND MOLD-RESISTANT GYPSUM BOARD, ASTM C 1396/C 1396M. WITH MOISTURE AND MOLD-RESISTANT CORE AND PAPER SURFACES. MOLD-RESISTANCE ASTM D 3273, SCORE 10 AS RATED ACCORDING TO ASTM D 3274.

CERAMIC TILE FLOOR – FACTORY-MOUNTED, SLIP RESISTANT, UNGLAZED CERAMIC MOSAIC TILE. MODULAR SIZE OF 6X6 AND 1/4" THICK. COLORS: TO BE SELECTED BY OWNER FROM THE MANUFACTURER'S STANDARD COLORS.

QUARRY TILE – SLIP RESISTANT, UNGLAZED TILES. MODULAR SIZE 6X6. COLORS TO BE SELECTED BY OWNER FROM MANUFACTURER'S STANDARD COLORS.

THRESHOLDS – FABRICATE TO SIZES AND PROFILES INDICATED AND REQUIRED TO PROVIDE TRANSITION BETWEEN ADJACENT FLOOR FINISHES. BEVEL EDGES TO 1:2 SLOPE AND LIMIT HEIGHT OF THRESHOLD TO 1/2 INCH OR LESS ABOVE ADJACENT FLOOR SURFACE. PROVIDE MARBLE THRESHOLDS WHERE QUARRY TILE MEETS CERAMIC TILE. COLOR TO BE SELECTED BY OWNER FROM MANUFACTURER'S STANDARD COLORS.

ACOUSTICAL PANEL CEILING – ASTM E 1264 FOR FORM, TYPE AND PATTERN AS FOLLOWS:

- TYPE AND FORM – ARMSTRONG TIERRA SQUARE LAY IN.
- PATTERN – FINE TEXTURE NATURAL FIBER.
- COLOR – WHITE
- SIZE – 24"x24"x3/4"
- BROAD SPECTRUM ANTIMICROBIAL FUNGICIDE AND BACTERICIDE TREATMENT – PROVIDE ACOUSTICAL PANELS TREATED WITH MANUFACTURER'S STANDARD ANTIMICROBIAL FORMULATION THAT INHIBITS FUNGUS, MOLD, MILDEW, AND GRAM-POSITIVE AND GRAM-NEGATIVE BACTERIA AND SHOWING NO MOLD, MILDEW, OR BACTERIAL GROWTH WHEN TESTED ACCORDING TO ASTM D 3274 OR ASTM G 21.

METAL SUSPENSION SYSTEM – PROVIDE MANUFACTURER'S STANDARD DIRECT-HUNG METAL SUSPENSION SYSTEMS OF TYPES, STRUCTURAL CLASSIFICATIONS, AND FINISHES INDICATED THAT

COMPLY WITH APPLICABLE REQUIREMENTS IN ASTM C 635/C635M.

SUSPENSION SYSTEM FINISH – HIGH-HUMIDITY FINISH TO COMPLY WITH ASTM C 635/C 635 M REQUIREMENTS FOR "COATING CLASSIFICATION FOR SEVERE ENVIRONMENT PERFORMANCE."

PAINTING: COLORS TO BE SELECTED BY OWNER FROM MANUFACTURER'S STANDARD COLORS IN THE BEIGE FAMILY – NO WHITES.

STEEL SUBSTRATES – EPOXY SYSTEM MPI INT 5.1L: PRIME COAT – PRIMER, EPOXY, ANTI-CORROSIVE, FOR METAL, MPI #101. INTERMEDIATE COAT – EPOXY, MATCHING TOPCOAT. TOPCOAT – EPOXY, GLOSS MPI #77.

GYPSUM BOARD SUBSTRATES – EPOXY SYSTEM MPI INT 9.2E: PRIME COAT – PRIMER SEALER, LATEX, INTERIOR, MPI #50. INTERMEDIATE COAT – EPOXY, MATCHING TOPCOAT. TOPCOAT – EPOXY, GLOSS, MPI #77.

CMU SUBSTRATES – EPOXY SYSTEM MPI EXT 4.2E: BLOCK FILLER: BLOCK FILLER, EPOXY, MPI #116. INTERMEDIATE COAT: EPOXY, MATCHING TOPCOAT. TOPCOAT: EPOXY, GLOSS, MPI #77.

PRE-FINISHED METAL PANEL – SERIES 4500 – ALUMINUM PLATE WALL PANEL SYSTEM. .125 INCH METAL THICKNESS ALUMINUM KYNAR 500/HYLAR 5000 HIGH PERFORMANCE COATINGS. COLOR TO BE SELECTED FROM THE MANUFACTURER'S STANDARD COLORS TO MATCH THE EXISTING MAIN FACILITY COLOR TONES.

NOTE – CONTRACTOR TO COORDINATE CONSTRUCTION TO ENSURE THAT WALL PANEL ASSEMBLIES FIT PROPERLY TO SUPPORTING AND ADJOINING CONSTRUCTION.

**DIVISION 10: SPECIALTIES**

TOILET TISSUE DISPENSER – DOUBLE ROLL – STAINLESS STEEL, NO. 4 FINISH (SATIN).

PAPER TOWEL DISPENSER – SINGLE FOLD – STAINLESS STEEL, NO. 4 FINISH (SATIN).

SOAP DISPENSER – LIQUID SOAP – STAINLESS STEEL, NO. 4 FINISH (SATIN).

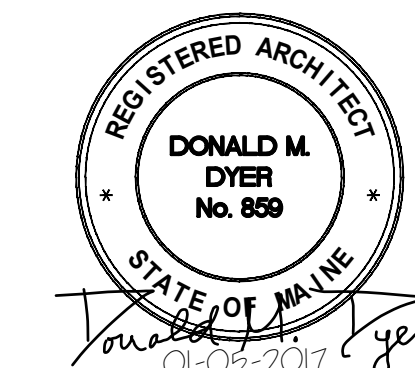
TRANSLUCENT CUSTOM SUSPENDED CANOPY SYSTEM – BASIS OF DESIGN PRODUCT IS PENTAGLAS 16 AS MANUFACTURED BY CPI DAYLIGHTING, INC. OR AN APPROVED EQUAL MANUFACTURER.

**DIVISION 12: FURNISHINGS**

COUNTERS – SOLID SURFACE CORIAN COUNTERS. COLORS TO BE SELECTED BY THE OWNER FROM MANUFACTURER'S STANDARD COLORS.

SILLS AND APRONS – SOLID SURFACE CORIAN. COLORS TO BE SELECTED BY THE OWNER FROM MANUFACTURER'S STANDARD COLORS.

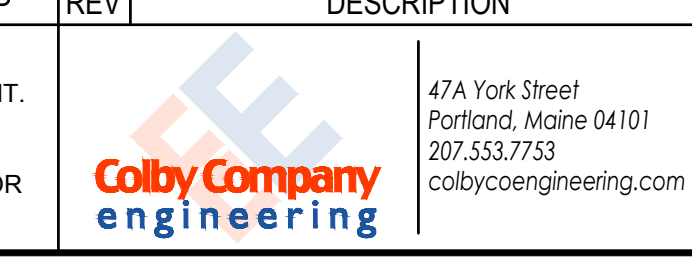
**ISSUED FOR BID  
NOT FOR CONSTRUCTION**  
JANUARY 5, 2017



REV	DESCRIPTION	DWN	APP	DATE
C	RE-ISSUED FOR BID	BLB	CBC	01/05/17
B	RE-ISSUED FOR BID	BLB	CBC	10/28/16
A	ISSUED FOR BID	BLB	CBC	9/02/16

ecomaine 64 BLUEBERRY ROAD, PORTLAND, ME	
SCALE HOUSE WITH INSULATED BLOCK CONSTRUCTION	
GENERAL NOTES AND SPECIFICATIONS	

PLEASE NOTE: THIS DOCUMENT MAY NOT ACCURATELY REPRESENT THE FINAL DOCUMENT. ONLY AN ENGINEER, ARCHITECT OR SURVEYOR SIGNED, SEALED AND DATED PAPER COPY, PROVIDED BY THIS OFFICE, MAY BE UTILIZED FOR BIDDING OR CONSTRUCTION PURPOSES.	SIZE: ANSI D	PROJECT NO. 162.002.002	DRAWING NO. A-001
	DATE: 09/02/2016	SHEET 8 OF 40	
	DES BY: BLB		
	DWN BY: BLB CKD BY: DMD		



X:\162 Ecomaine\162.002.002 - Scale House with CMU Drawings\Sheets\A-001.dwg - 1/5/2017 2:25 PM - ZACH JONES