

VICINITY MAP
 REFERENCE: USSS ROSTLAND WEST, NE. AT PORTLAND & GUARANTEE.

REFERENCES SPECIFICATIONS

- SSC-1 SURFACE BORINGS & SAMPLING
- SSC-2 SOILS
- SSC-3 GENERAL SITE WORK, SITE PREPARATION &
- SSC-4 SOUGH GRADING
- SSC-5 FINAL GRADING
- SSC-6 PAVING AREAS
- SSC-7 FENCES
- SSC-8 FENCING

REFERENCE DRAWINGS:

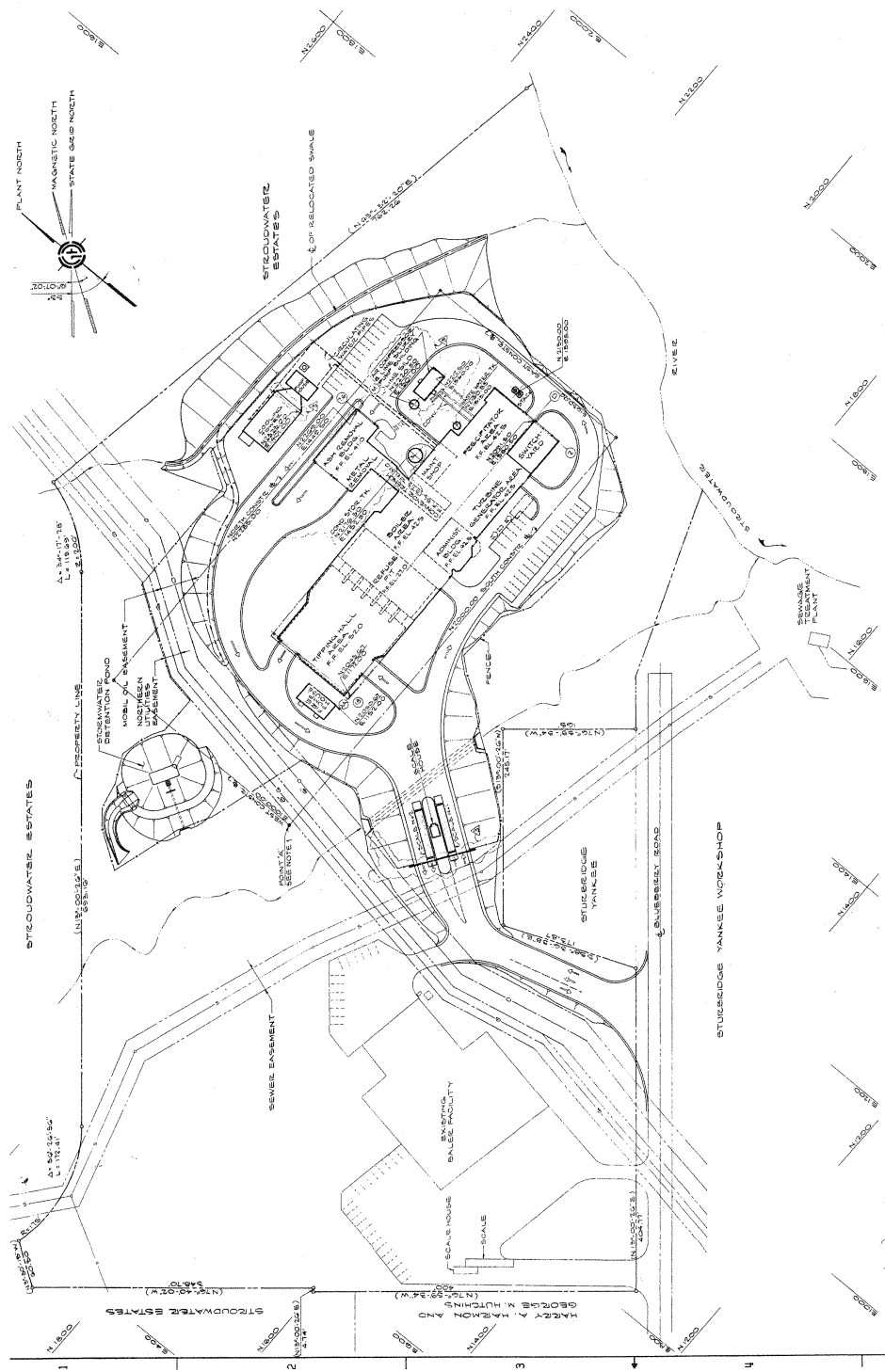
- ECSC-0101 SITE PLAN
- ECSC-0102 SOUTH GRADING PLAN - PHASE I
- ECSC-0103 SOUTH GRADING - SECTIONS & DETAILS
- ECSC-0104 SOUTH GRADING - SECTIONS & DETAILS
- ECSC-0105 FINAL GRADING, DRAINAGE & PAVING
- ECSC-0106 FINAL GRADING, DRAINAGE & PAVING
- ECSC-0107 FINAL GRADING, DRAINAGE & PAVING
- ECSC-0108 SITE DEVELOPMENT SECTIONS & DETAILS,
- ECSC-0109 SITE DEVELOPMENT SECTIONS & DETAILS,
- ECSC-0110 COMPOSITE SITE UTILITY PLAN - SHEET 1
- ECSC-0111 COMPOSITE SITE UTILITY PLAN - SHEET 2
- ECSC-0112 PLANTING PLAN

GENERAL NOTES:

- 1. PLANT COORDINATES OF POINT A, 1420000 AND 1000000 CORRESPOND TO THE STATE GRID.
- 2. PROPERTY LINE BEARINGS SHOWN IN PARENTHESES ARE BASED ON MAGNETIC NORTH.

THIS DOCUMENT IS IN FULL COMPLIANCE WITH THE BASIC AGREEMENT

DRANO ENERGY RESOURCES, INC.
 GREATER PORTLAND RESOURCE RECOVERY PROJECT



- TECHNICAL SPECIFICATIONS FOR SITE FINISH**
- 2.0 GENERAL APPROXIMATE AND SPECIAL REQUIREMENTS
 - 2.1 CONCRETE SHALL FINISH AND SHALL CONFORM TO THE FOLLOWING:
 - 2.1.1 ALL CONCRETE SHALL BE 4000 PSI (28 DAYS) WITH 5% AIR ENTRAINMENT. ALL CONCRETE SHALL BE PLACED AND FINISHED WITH A FINISH TO BE DETERMINED BY THE ENGINEER. ALL CONCRETE SHALL BE CURED FOR A MINIMUM OF 7 DAYS.
 - 2.1.2 PERMITS SHALL BE OBTAINED FOR ALL CONCRETE PLACEMENT. THE CONTRACTOR SHALL BE RESPONSIBLE FOR OBTAINING ALL NECESSARY PERMITS AND INSURANCE.
 - 2.1.3 SUBMITTALS: THE CONTRACTOR SHALL SUBMIT ALL NECESSARY PERMITS AND INSURANCE TO THE ENGINEER FOR REVIEW AND APPROVAL.
 - 2.1.4 MATERIALS AND INSTALLATION: ALL MATERIALS SHALL BE OF THE HIGHEST QUALITY AND SHALL BE INSTALLED IN ACCORDANCE WITH THE MANUFACTURER'S RECOMMENDATIONS AND THE ENGINEER'S SPECIFICATIONS.
 - 2.1.5 FINISHES: ALL FINISHES SHALL BE OF THE HIGHEST QUALITY AND SHALL BE INSTALLED IN ACCORDANCE WITH THE MANUFACTURER'S RECOMMENDATIONS AND THE ENGINEER'S SPECIFICATIONS.
 - 2.1.6 PAINTS: ALL PAINTS SHALL BE OF THE HIGHEST QUALITY AND SHALL BE INSTALLED IN ACCORDANCE WITH THE MANUFACTURER'S RECOMMENDATIONS AND THE ENGINEER'S SPECIFICATIONS.
 - 2.1.7 FENCES: ALL FENCES SHALL BE OF THE HIGHEST QUALITY AND SHALL BE INSTALLED IN ACCORDANCE WITH THE MANUFACTURER'S RECOMMENDATIONS AND THE ENGINEER'S SPECIFICATIONS.
 - 2.2 LIGHTING: ALL LIGHTING SHALL BE OF THE HIGHEST QUALITY AND SHALL BE INSTALLED IN ACCORDANCE WITH THE MANUFACTURER'S RECOMMENDATIONS AND THE ENGINEER'S SPECIFICATIONS.
 - 2.3 SIGNAGE: ALL SIGNAGE SHALL BE OF THE HIGHEST QUALITY AND SHALL BE INSTALLED IN ACCORDANCE WITH THE MANUFACTURER'S RECOMMENDATIONS AND THE ENGINEER'S SPECIFICATIONS.
 - 2.4 UTILITIES: ALL UTILITIES SHALL BE OF THE HIGHEST QUALITY AND SHALL BE INSTALLED IN ACCORDANCE WITH THE MANUFACTURER'S RECOMMENDATIONS AND THE ENGINEER'S SPECIFICATIONS.
 - 2.5 LANDSCAPING: ALL LANDSCAPING SHALL BE OF THE HIGHEST QUALITY AND SHALL BE INSTALLED IN ACCORDANCE WITH THE MANUFACTURER'S RECOMMENDATIONS AND THE ENGINEER'S SPECIFICATIONS.
 - 2.6 FENCING: ALL FENCING SHALL BE OF THE HIGHEST QUALITY AND SHALL BE INSTALLED IN ACCORDANCE WITH THE MANUFACTURER'S RECOMMENDATIONS AND THE ENGINEER'S SPECIFICATIONS.
 - 2.7 SPECIAL FINISHES: ALL SPECIAL FINISHES SHALL BE OF THE HIGHEST QUALITY AND SHALL BE INSTALLED IN ACCORDANCE WITH THE MANUFACTURER'S RECOMMENDATIONS AND THE ENGINEER'S SPECIFICATIONS.

