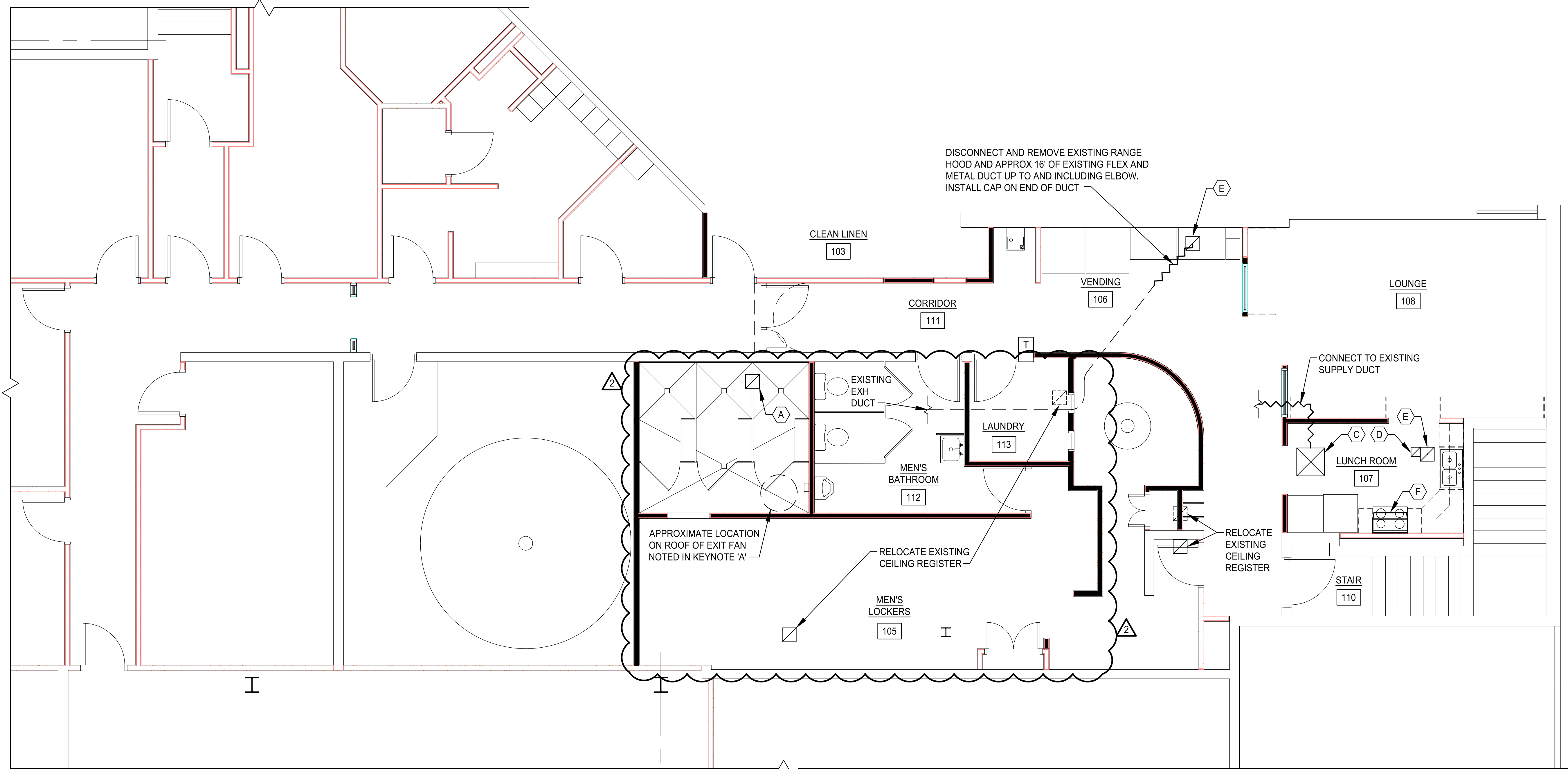


COPYRIGHT 2016 © DIRIGO ARCHITECTURAL ENGINEERING LLC. ALL RIGHTS RESERVED. NO REPRODUCTION WITHOUT PRIOR WRITTEN PERMISSION



KEYNOTES:

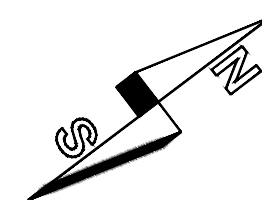
- (A)** RELOCATE AND RE-BALANCE EXISTING EXHAUST REGISTER TO 150 CFM. RE-BALANCE ASSOCIATE ROOFTOP EXIT FAN FOR 100 CFM INCREASED AIRFLOW
- (C)** REMOVE EXISTING FLEX DUCT AND CEILING DIFFUSER. FURNISH AND INSTALL NEW 8" CEILING DIFFUSER EQUAL TO PRICE APDC. FURNISH AND INSTALL NEW 8" FLEX FROM DIFFUSER TO EXISTING METAL SUPPLY DUCT BRANCH AND CONNECT. BALANCE DIFF TO 180 CFM
- (D)** REMOVE EXISTING EXHAUST REGISTER, DUCT AND EXHAUST FAN ON ROOF. CAP ROOF OPENING WEATHER TIGHT.
- (E)** FURNISH AND INSTALL NEW 12"x12" RETURN REGISTER IN CEILING.
- (F)** FURNISH AND INSTALL NEW RECIRCULATING RANGE HOOD EQUAL TO BROAN 4100 SERIES TWO SPEED NON-DUCTED RANGE HOOD. HOOD 30" WIDE BY 17.5" DEEP BY 6" HIGH. SEE RANGE HOOD SCHEDULE.

LEGEND:

- (T)** EXISTING THERMOSTAT TO REMAIN.

NOTES:

1. CONTRACTOR TO THOROUGHLY CLEAN AND WIPE DOWN ALL EXISTING AND REUSED HVAC GRILLES, REGISTERS, DIFFUSERS, AND DUCTWORK
2. ALL EXISTING MAINS AND BRANCHES PROPOSED FOR CONNECTIONS BE VERIFIED IN THE FIELD BEFORE START OF WORK IN THE ASSOCIATED WORK SCOPE.



2ND FLOOR EXHAUST SYSTEM MODIFICATIONS
 NEW PROGRAMMABLE THERMOSTAT AND WIRELESS SENSORS
 22X34 SCALE: 1/4"=1'-0"
 11X17 SCALE: 1/8"=1'-0"

1
M1.2

ecomaine
LOCKER ROOM RENOVATION
 PORTLAND
 MAINE

SIGNED COPY OF DRAWING
 ON FILE AT DIRIGO A/E
 OFFICE

 ROBERT A. BROCK
 LICENSED PROFESSIONAL ENGINEER
 6/1/2016

LEVEL 2 HVAC MODIFICATION

REV.	DATE	DESCRIPTION
1	1/18/16	ISSUED FOR CONSTRUCTION
2	6/7/16	ISSUED FOR SET
3		

DRAWN BY: DLB
 CHECKED BY: RHB

PH: (207) 225 - 3040
 1071 Auburn Road
 Suite G
 Turner, ME 04282

DIRIGO ARCHITECTURAL
 ENGINEERING • CONSTRUCTION MANAGEMENT
 E-mail: tperkins@dirigoae.com W: www.dirigoae.com

DATE: 6/1/16
 PROJECT NO. 15-015

SHEET NO.

M1.2

Optimized Design, Inc. P.C.
 Mechanical / HVAC