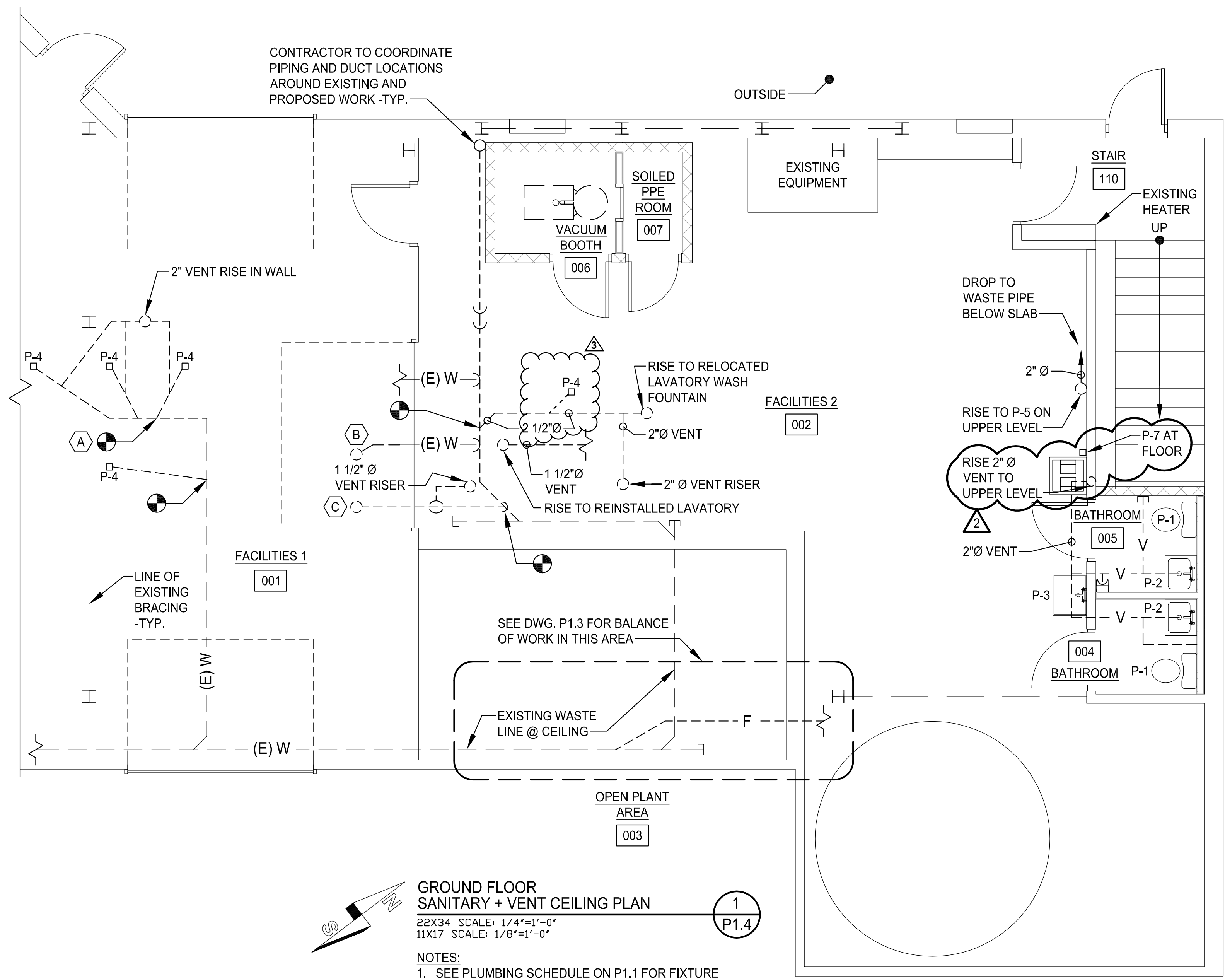


COPYRIGHT 2016 © DIRIGO ARCHITECTURAL ENGINEERING LLC. ALL RIGHTS RESERVED. NO REPRODUCTION WITHOUT PRIOR WRITTEN PERMISSION

- KEYNOTES:**
- (A)** DEMOLISH AND REMOVE APPROXIMATELY 6'-0" OF EXISTING DRAIN PIPE TO SHOWER. RUN NEW 2" DRAIN (VIF) TO 3 NEW SHOWERS AND 1 NEW FLOOR DRAIN ON UPPER LEVEL.
  - (B)** DEMOLISH AND REMOVE APPROXIMATELY 4'-0" OF EXISTING TOILET DRAIN PIPE. RUN NEW 4"Ø SAN PIPE (VIF) TO RELOCATED TOILET.
  - (C)** RISE 2" SAN THROUGH FLOOR TO RELOCATED URINAL



**GROUND FLOOR  
SANITARY + VENT CEILING PLAN**

22X34 SCALE: 1/4"=1'-0"  
11X17 SCALE: 1/8"=1'-0"

**NOTES:**

1. SEE PLUMBING SCHEDULE ON P1.1 FOR FIXTURE SPECIFICATIONS
2. SLOPE WASTE PIPE AT 1/4" PER FOOT MIN.
3. ALL EXISTING MAINS AND BRANCHES PROPOSED FOR CONNECTIONS BE VERIFIED IN THE FIELD BEFORE START OF WORK IN THE ASSOCIATED WORK SCOPE.

ecomaine  
**LOCKER ROOM RENOVATION**  
PORTLAND  
MAINE

SIGNED COPY OF DRAWING ON FILE AT DIRIGO A/E OFFICE

**GROUND FL. SANITARY + VENT CLG. PLAN**

REV.	DATE	DESCRIPTION
1	1/18/16	ISSUED FOR CONSTRUCTION
2	6/1/16	ISSUED FOR SI #1
3	8.8.16	ISSUED WITH CITY PLAN REVIEW COMMENTS

DRAWN BY: CGB  
CHECKED BY: RHB

PH: (207) 225 - 3040  
1071 Auburn Road  
Suite G  
Turner, ME 04282

**DIRIGO ARCHITECTURAL**  
ENGINEERING • CONSTRUCTION MANAGEMENT  
EM: tperkins@dirigoae.com W: www.dirigoae.com

DATE: 6/1/16  
PROJECT NO. 15-015

SHEET NO.  
**P1.4**