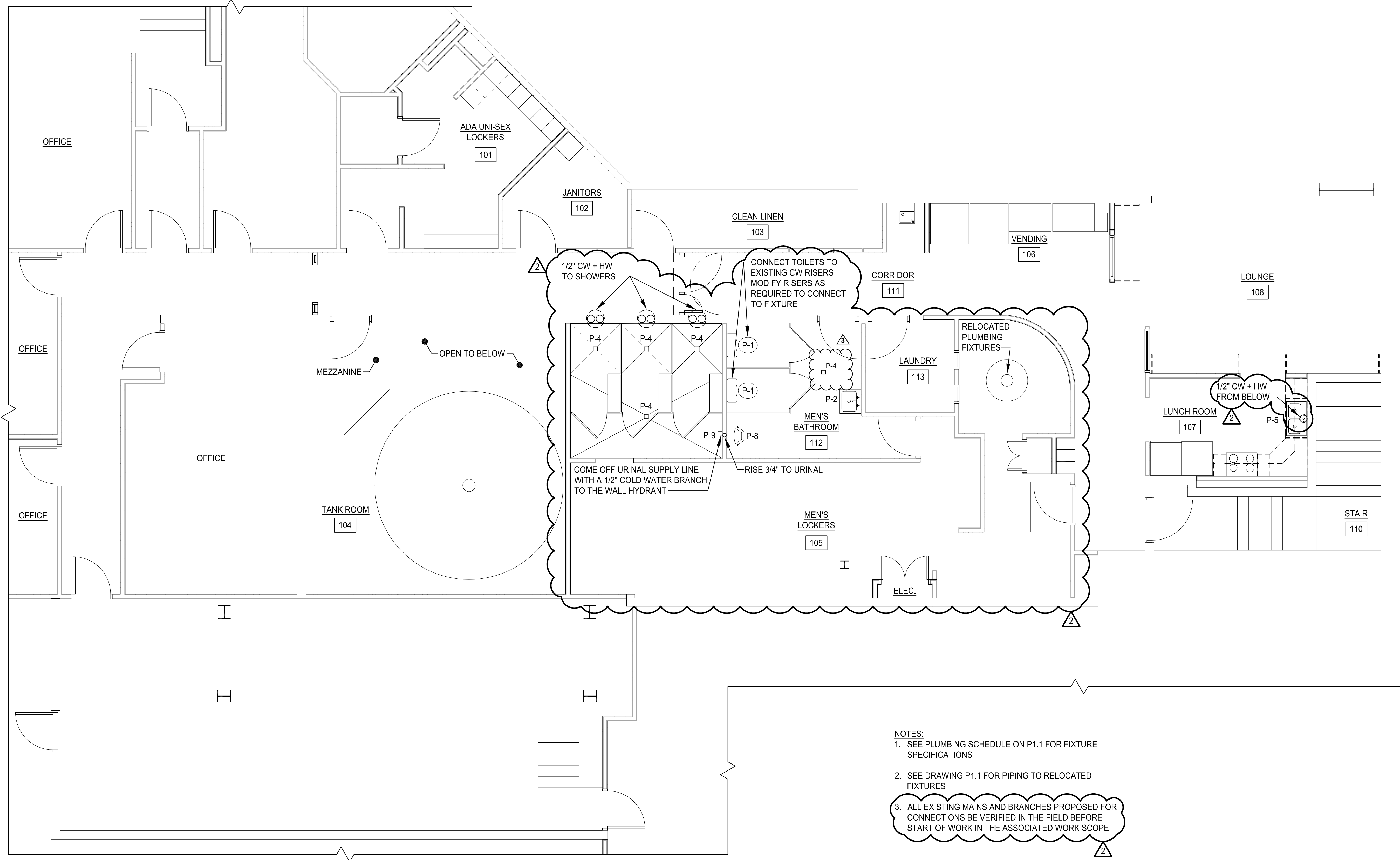


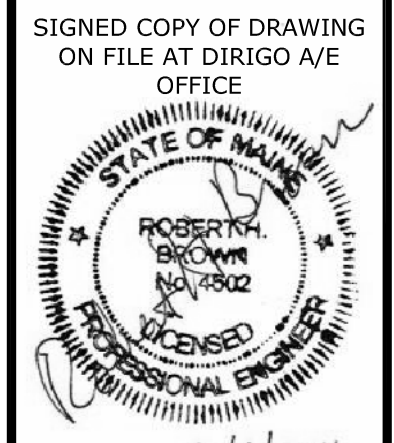
COPYRIGHT 2016 © DIRIGO ARCHITECTURAL ENGINEERING LLC. ALL RIGHTS RESERVED. NO REPRODUCTION WITHOUT PRIOR WRITTEN PERMISSION



- NOTES:**
- SEE PLUMBING SCHEDULE ON P1.1 FOR FIXTURE SPECIFICATIONS
 - SEE DRAWING P1.1 FOR PIPING TO RELOCATED FIXTURES
 - ALL EXISTING MAINS AND BRANCHES PROPOSED FOR CONNECTIONS BE VERIFIED IN THE FIELD BEFORE START OF WORK IN THE ASSOCIATED WORK SCOPE.

LEVEL 2 FLOOR CW + HW PIPING PLAN 1
 22X34 SCALE: 1/4"=1'-0"
 11X17 SCALE: 1/8"=1'-0" P1.2

ecomaine
LOCKER ROOM RENOVATION
 PORTLAND MAINE



LEVEL 2 FL. CW + HW PIPING PLAN

REV.	DATE	DESCRIPTION
1	1/18/16	ISSUED FOR CONSTRUCTION
2	6/1/16	ISSUED FOR SI #1
3	8.8.16	ISSUED WITH CITY PLAN REVIEW COMMENTS

DRAWN BY: CGB
 CHECKED BY: RHB

PH: (207) 225 - 3040
 1071 Auburn Road
 Suite G
 Turner, ME 04282

DIRIGO ARCHITECTURAL ENGINEERING
 CONSTRUCTION MANAGEMENT
 E/M: tperkins@dirigoae.com W: www.dirigoae.com

DATE: 6/1/16
 PROJECT NO. 15-015
 SHEET NO.

P1.2

Optimized Design, Inc. P.C.
 Mechanical / HVAC