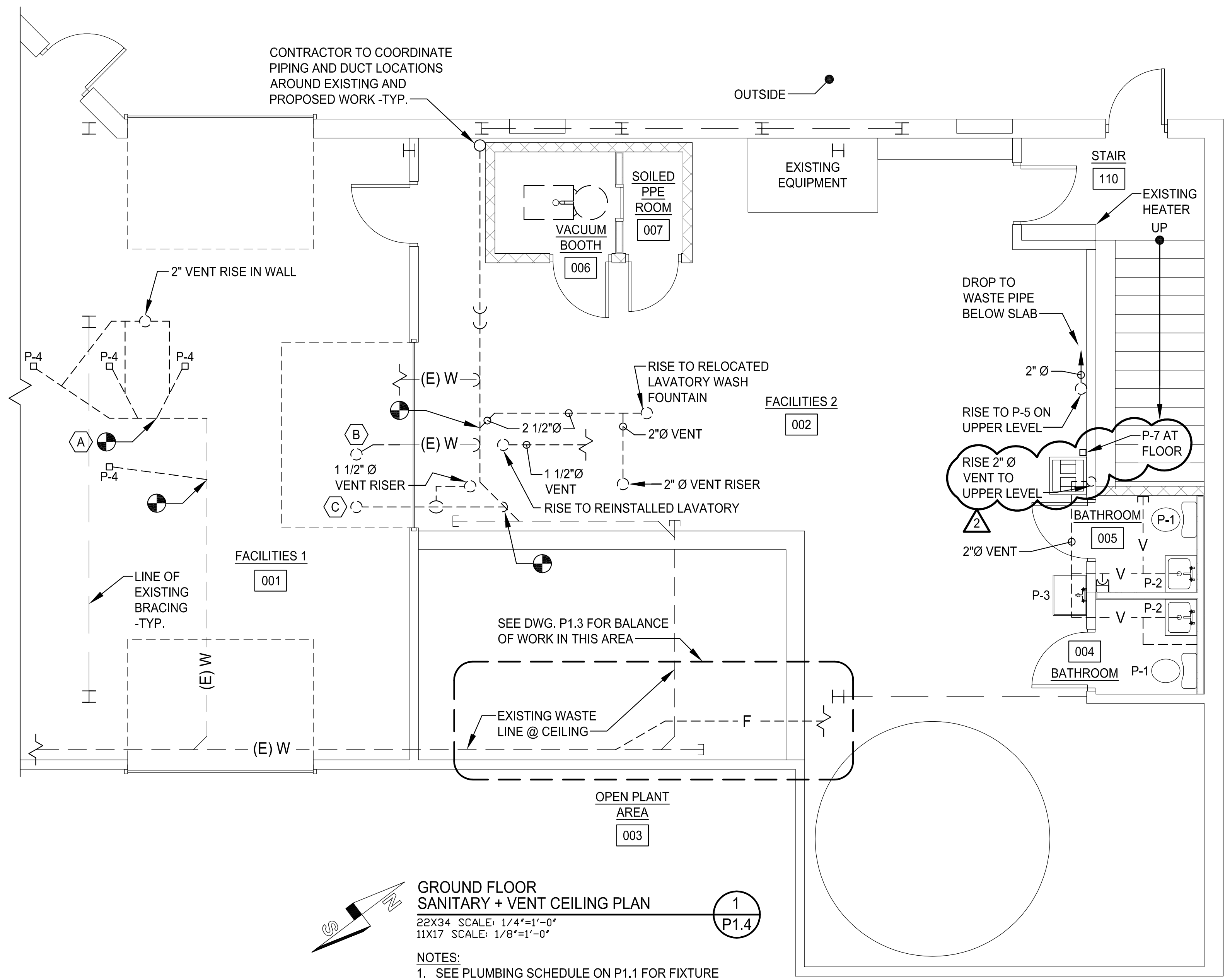


COPYRIGHT 2016 © DIRIGO ARCHITECTURAL ENGINEERING LLC. ALL RIGHTS RESERVED. NO REPRODUCTION WITHOUT PRIOR WRITTEN PERMISSION

- KEYNOTES:**
- (A)** DEMOLISH AND REMOVE APPROXIMATELY 6'-0" OF EXISTING DRAIN PIPE TO SHOWER. RUN NEW 2" DRAIN (VIF) TO 3 NEW SHOWERS AND 1 NEW FLOOR DRAIN ON UPPER LEVEL.
 - (B)** DEMOLISH AND REMOVE APPROXIMATELY 4'-0" OF EXISTING TOILET DRAIN PIPE. RUN NEW 4"Ø SAN PIPE (VIF) TO RELOCATED TOILET.
 - (C)** RISE 2" SAN THROUGH FLOOR TO RELOCATED URINAL



**GROUND FLOOR
SANITARY + VENT CEILING PLAN**

22X34 SCALE: 1/4"=1'-0"
11X17 SCALE: 1/8"=1'-0"

NOTES:

1. SEE PLUMBING SCHEDULE ON P1.1 FOR FIXTURE SPECIFICATIONS
2. SLOPE WASTE PIPE AT 1/4" PER FOOT MIN.
3. ALL EXISTING MAINS AND BRANCHES PROPOSED FOR CONNECTIONS BE VERIFIED IN THE FIELD BEFORE START OF WORK IN THE ASSOCIATED WORK SCOPE.

ecomaine
LOCKER ROOM RENOVATION
 PORTLAND
 MAINE

SIGNED COPY OF DRAWING
ON FILE AT DIRIGO A/E
OFFICE

GROUND FL. SANITARY + VENT CLG. PLAN

REV.	DATE	DESCRIPTION
1	1/18/16	ISSUED FOR CONSTRUCTION
2	6/1/16	ISSUED FOR SI #1
3		

DRAWN BY: CGB
CHECKED BY: RHB

PH: (207) 225 - 3040
1071 Auburn Road
Suite G
Turner, ME 04282

DIRIGO ARCHITECTURAL
ENGINEERING • CONSTRUCTION MANAGEMENT
EM: tperkins@dirigoae.com W: www.dirigoae.com

DATE: 6/1/16
PROJECT NO. 15-015

SHEET NO.
P1.4

Optimized Design, Inc. P.C.
Mechanical / HVAC