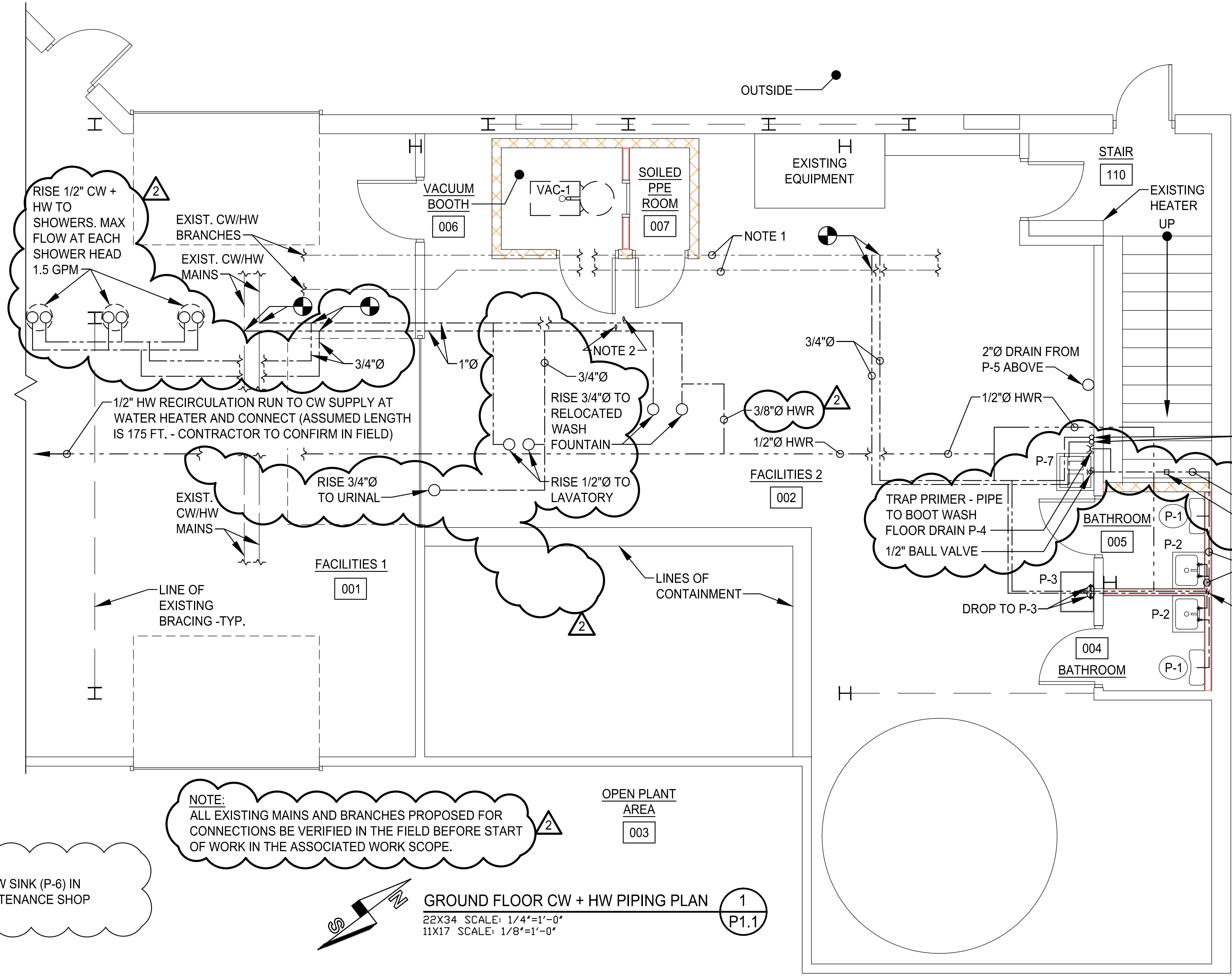


COPYRIGHT 2016 © DIRIGO ARCHITECTURAL ENGINEERING LLC. ALL RIGHTS RESERVED. NO REPRODUCTION WITHOUT PRIOR WRITTEN PERMISSION



- NOTES:**
- EXISTING HOT + COLD DOMESTIC WATER SUPPLY BRANCHES, ASSUMED TO BE 1/2" - VERIFY IN FIELD
  - FURNISH AND INSTALL SIOUX CHIEF MINI RESTER 660-XZ W/ 1/2" THREADED CONNECTION
  - PROVIDE SHUTOFF VALVE AT EACH NEW BRANCH OFF MAINS
  - DEMOLISH AND REMOVE EXISTING BRANCH CW SUPPLY TO URINAL
  - DEMOLISH AND REMOVE EXISTING BRANCH CW/HW SUPPLY TO SHOWERS
  - INSULATE ALL NEW COLD WATER AND HOT WATER PIPING W/ 1/2" THICK PIPE INSULATION W/ AN ASJ COVER

**NOTE:**  
ALL EXISTING MAINS AND BRANCHES PROPOSED FOR CONNECTIONS BE VERIFIED IN THE FIELD BEFORE START OF WORK IN THE ASSOCIATED WORK SCOPE.

NEW SINK (P-6) IN MAINTENANCE SHOP

**GROUND FLOOR CW + HW PIPING PLAN**  
22X34 SCALE: 1/4"=1'-0"  
11X17 SCALE: 1/8"=1'-0"

**PLUMBING FIXTURE SCHEDULE**

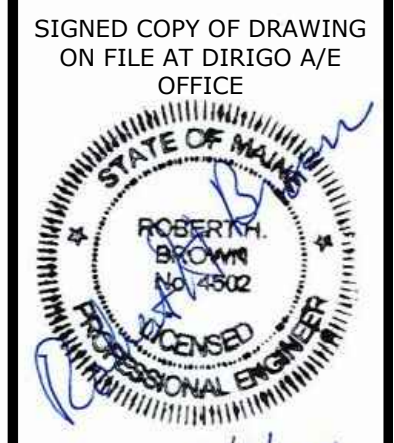
TAG	FIXTURE	CW	HW	TW	WASTE	VENT	BASIS OF DESIGN
P-1	FLOOR MOUNTED WATER CLOSET	1/2"	-	-	4"	2"	AMERICAN STANDARD CADET PRO COMPACT RIGHT HEIGHT ELONGATED TOILET MODEL 215FC.004 W/ AQUAGUARD TANK LINER + #5321.110 EVERCLEAN ELONGATED SEAT W/ SLOW CLOSE SNAP OFF HINGES.
P-2	WALL-HUNG LAVATORY	1/2"	1/2"	-	1 1/2"	1 1/2"	AMERICAN STANDARD LUCERNE WALL HUNG LAVATORY MODEL 0356.015 W/ CHICAGO FAUCET 0.5 GPM MODEL 404-VE2805-317ABCP FAUCET.
P-3	WASH SINK	1/2"	1/2"	-	2"	1 1/2"	ADVANCE TABCO MODEL 4-41-24 430 STAINLESS STEEL, ONE COMPARTMENT FLOOR MOUNT 32"HX24"WX24"D. CHICAGO FAUCET 631-L12WXFABCP FAUCET WITH WRIST BLADE HANDLES.
P-4	DRAIN	-	-	-	2"	1 1/2"	JAY R. SMITH DRAIN - MODEL 2010C SQUARE TOP W/ TRAP PRIMER CONN. FURNISH, INSTALL AND PIPE PPP PR-500 TRAP PRIMER
P-5	STAINLESS STEEL SINK	1/2"	1/2"	-	1 1/2"	1 1/2"	JUST MANUFACTURING DL-ADA-2133-16-GR DOUBLE BOWL 18 GAUGE STAINLESS STEEL 33X21X6 DEEP SINK W/ 4" CENTERS. CHICAGO FAUCET 1895-E35ABCP 1.5 GPM MANUAL FAUCET.
P-6	3 BASIN SINK (MAINT. AREA)	USE EXISTING	USE EXISTING	USE EXISTING	USE EXISTING	USE EXISTING	ELKAY SSP 12" BUDGET SERIES SINK MODEL B3C24X24X ADD ADDITIONAL FAUCETS ON LEFT AND RIGHT BOWLS. CHICAGO FAUCET 895-GN2AE3-319ABCP FAUCET WITH 6 INCH ELBOW BLADE HANDLES.
P-7	BOOTWASH	1/2"	-	-	2"	-	STABLEX BOOT CLEANING STATION EQUIPPED W/ THREE FIXED BRUSHES + A HAND BRUSH W/ HOSE. INTEGRAL TRAY TO COLLECT DIRTY WATER
P-8	WALL HUNG URINAL	3/4"	-	-	2"	1 1/2"	AMERICAN STANDARD WASHBROOK FLOWISE 0.125 GPF ULTRA HIGH EFFICIENCY URINAL SYSTEM MODEL 6590.525 WITH 2 WALL HANGERS, FLUSHING RIM, STRAINER AND SELECTRONIC FLUSH VALVE WITH PROXIMITY SENSOR AND CR-P2 LITHIUM BATTERY.
P-9	WALL HYDRANT	1/2"	-	-	-	-	WOODFORD ANTI-SIPHON WALL FAUCET MODEL 24 WITH CHROME FINISH, POLYCARBONATE WHEEL HANDLE AND 3/4" MALE ANTI SIPHON HOSE THREAD OUTLET.

**VACUUM PUMP AND STORAGE TANK SCHEDULE**

TAG	SERVES	SYSTEM POWER	CFM	VACCUM	VOLTAGE / PHASE	DEMENSIONS L, W, H	STORAGE CAPACITY	NOISE LEVEL @ 3 FT	WEIGHT LB	MANUFACTURER AND MODEL NUMBER
VAC-1	VACUUM BOOTH	10HP	240	9.0" HG (124" h20)	230/460/3/60	245x22x59"	11 GAL	84-58 DBA	775	ATCO WAND 610

Optimized Design, Inc. P.C.  
Mechanical / HVAC

ecomaine  
**LOCKER ROOM RENOVATION**  
 PORTLAND  
 MAINE



**GROUND FLOOR CW + HW PIPING PLAN**

REV.	DATE	DESCRIPTION
1	1/18/16	ISSUED FOR CONSTRUCTION
2	6/7/16	ISSUED FOR SET
3		

DRAWN BY: CGB  
CHECKED BY: RHB

PH: (207) 225 - 3040  
1071 Auburn Road  
Suite G  
Turner, ME 04282



DATE: 6/1/16  
PROJECT NO. 15-015  
SHEET NO.

**P1.1**