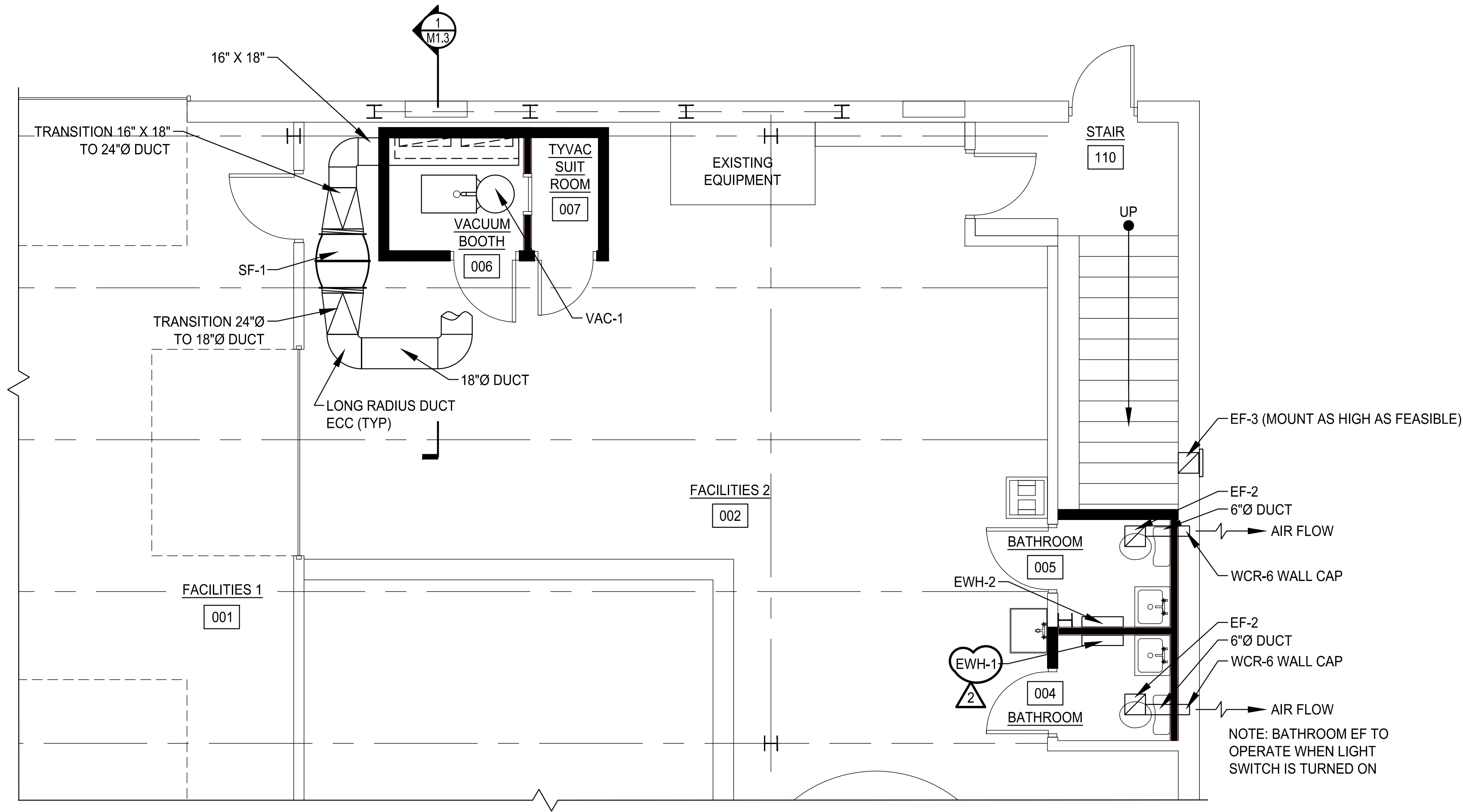
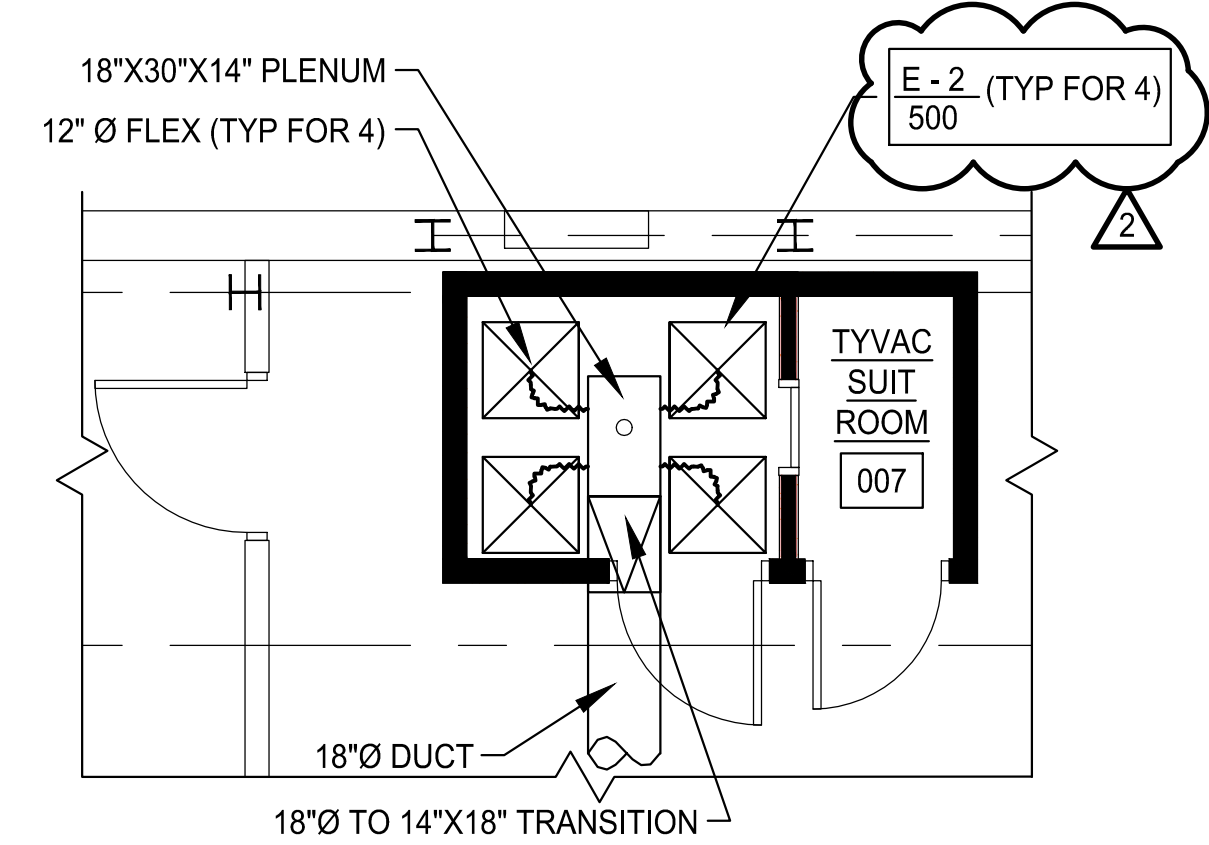


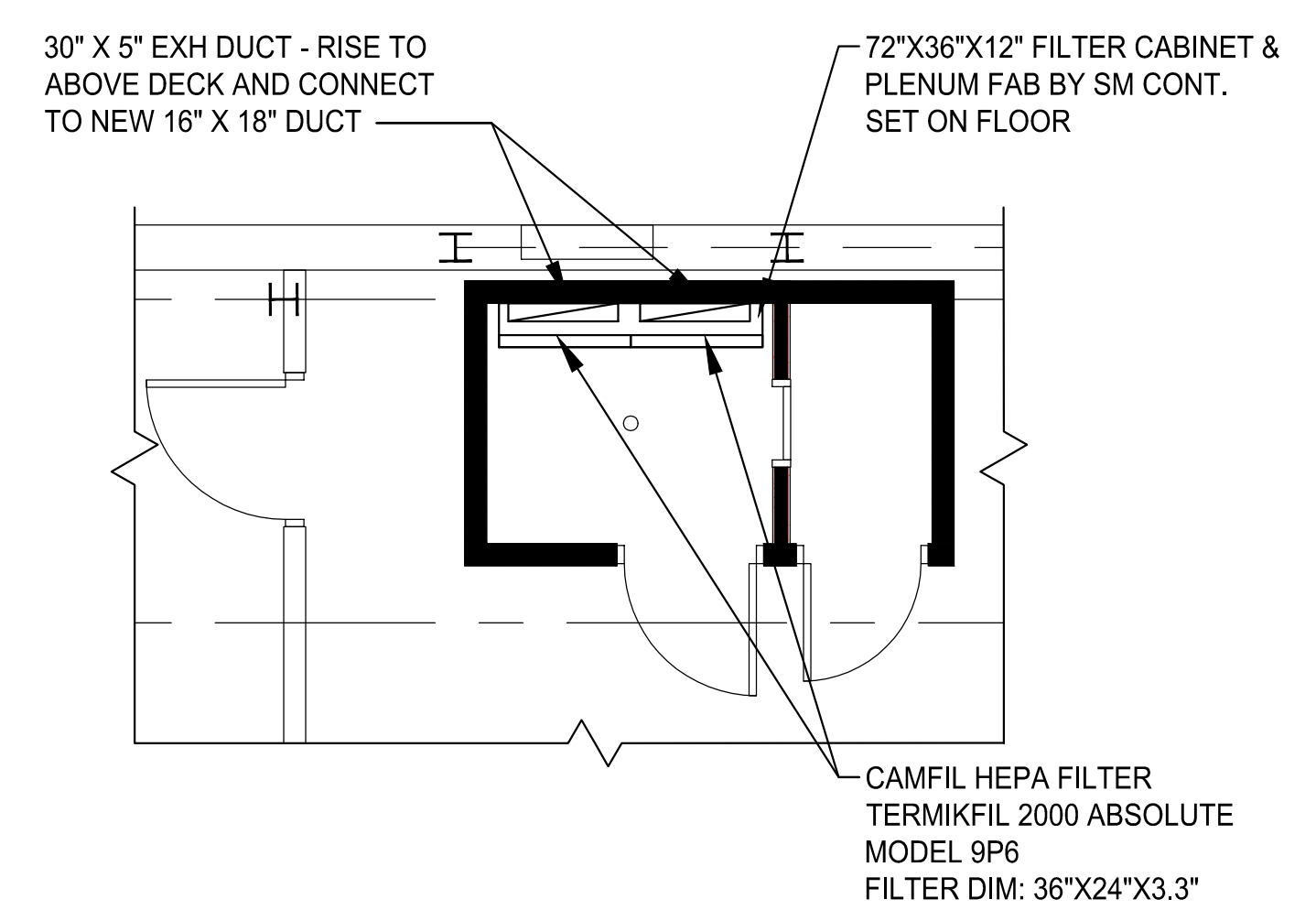
COPYRIGHT 2015 © DIRIGO ARCHITECTURAL ENGINEERING LLC. ALL RIGHTS RESERVED. NO REPRODUCTION WITHOUT PRIOR WRITTEN PERMISSION



**GROUND FLOOR SUPPLY FAN AND DUCTING** 1  
 22X34 SCALE: 1/4"=1'-0"  
 11X17 SCALE: 1/8"=1'-0" M1.1



**VACUUM BOOTH DIFUSERS** 2  
 22X34 SCALE: 1/4"=1'-0"  
 11X17 SCALE: 1/8"=1'-0" M1.1



**VACUUM BOOTH HEPA FILTER EXHAUST** 3  
 22X34 SCALE: 1/4"=1'-0"  
 11X17 SCALE: 1/8"=1'-0" M1.1

NOTE:  
 ALL EXISTING MAINS AND BRANCHES PROPOSED FOR CONNECTIONS BE VERIFIED IN THE FIELD BEFORE START OF WORK IN THE ASSOCIATED WORK SCOPE.

Optimized Design, Inc. P.C.  
 Mechanical / HVAC

ecomaine  
**LOCKER ROOM RENOVATION**  
 PORTLAND  
 MAINE

SIGNED COPY OF DRAWING ON FILE AT DIRIGO A/E OFFICE  
 STATE OF MAINE  
 ROBERTA BROWN  
 LICENSED PROFESSIONAL ENGINEER  
 61172916

**GROUND FLOOR HVAC MODIFICATION**

REV.	DATE	DESCRIPTION
1	1/18/16	ISSUED FOR CONSTRUCTION
2	6/7/16	ISSUED FOR SET OUT
3		

DRAWN BY: DLB  
 CHECKED BY: RHB

PH: (207) 225 - 3040  
 1071 Auburn Road  
 Suite G  
 Turner, ME 04282

**DIRIGO ARCHITECTURAL**  
 ENGINEERING • CONSTRUCTION MANAGEMENT  
 EM: tperk@dirigoae.com W: www.dirigoae.com

DATE: 6/1/16  
 PROJECT NO. 15-015

SHEET NO.  
**M1.1**