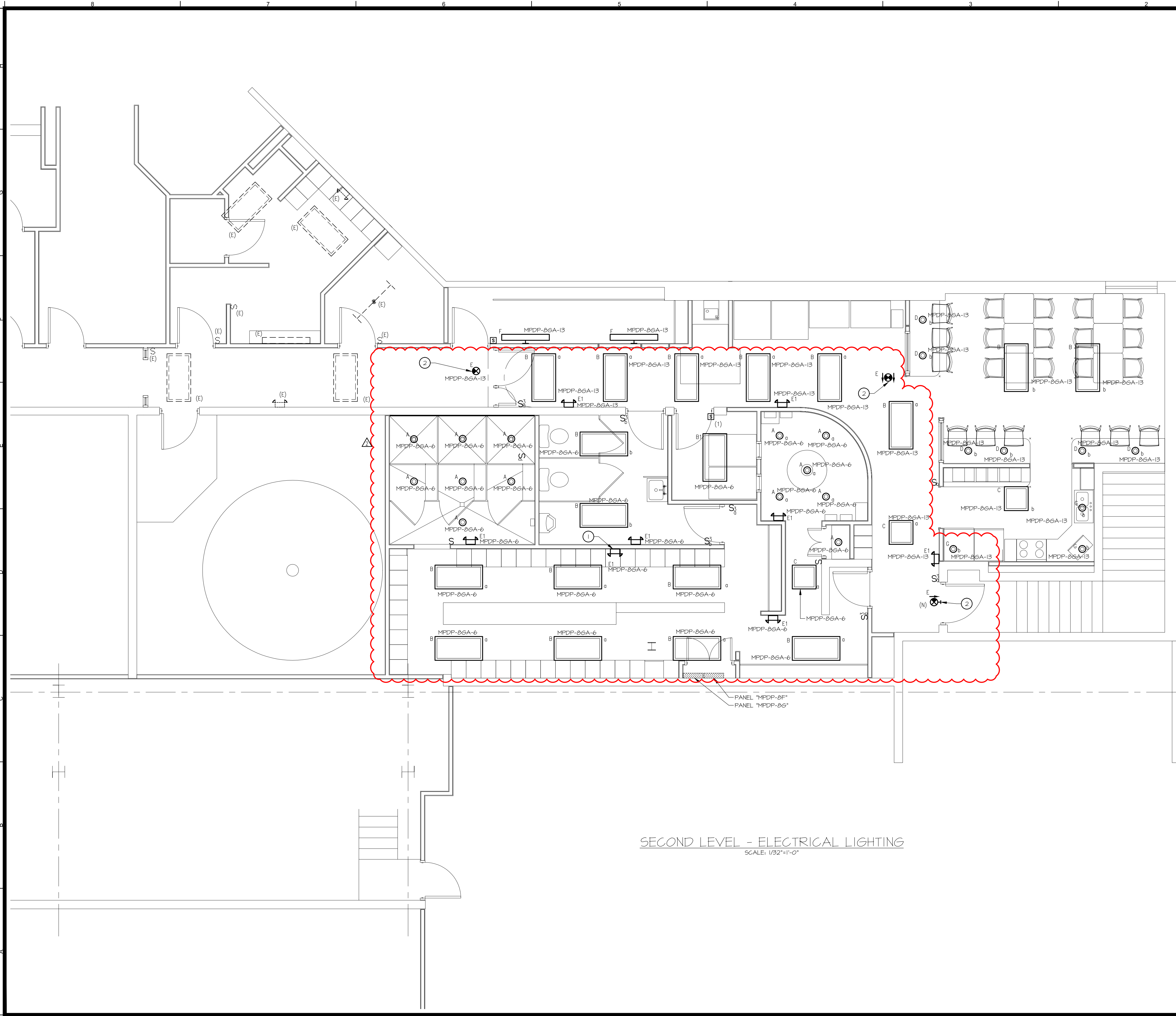


COPYRIGHT 2016 © B3 ELECTRICAL ENGINEERING LLC. ALL RIGHTS RESERVED. NO REPRODUCTION WITHOUT PRIOR WRITTEN PERMISSION

Jun 01, 2016 - 9:55am  
 C:\Users\pbadger\Documents\B3 Engineering\Dirigo AE\ecomaine\CAD\Project\Sheets\Drawing Set\Electrical\E2.2.dwg



- DRAWING E2.2  
 NUMBERED NOTES**
- ① MOUNT LIGHT FIXTURE ABOVE THE LOCKERS.
  - ② PROVIDE NEW EXIT LIGHTS, RE-USE THE EXISTING EXIT LIGHTING CIRCUIT AND EXTEND TO NEW EXIT LIGHT LOCATIONS AS REQUIRED.

SECOND LEVEL - ELECTRICAL LIGHTING  
 SCALE: 1/32"=1'-0"

**B3** B3 Electrical  
 Engineering, Estimating, Construction  
 196 Washington St.  
 Brewer, Maine 04412  
 (863)255-0883

ecomaine  
**LOCKER ROOM RENOVATION**  
 PORTLAND  
 MAINE

SIGNED COPY OF DRAWING  
 ON FILE AT DIRIGO AVE  
 OFFICE

6/01/16

**SECOND LEVEL LIGHTING PLAN**

REV.	DATE	DESCRIPTION
1	01/18/16	ISSUED FOR CONSTRUCTION
2	6/01/16	ISSUED FOR SET #1

DRAWN BY: PEB  
 CHECKED BY: PEB

PH: (207) 225 - 3040  
 1071 Auburn Road  
 Suite G  
 Turner, ME 04282

**DIRIGO**  
 ARCHITECTURAL  
 ENGINEERING • CONSTRUCTION MANAGEMENT  
 EN: tperkins@dirigoae.com W: www.dirigoae.com

DATE: 6/01/16  
 PROJECT NO. 15-015  
 SHEET NO.  
**E2.2**