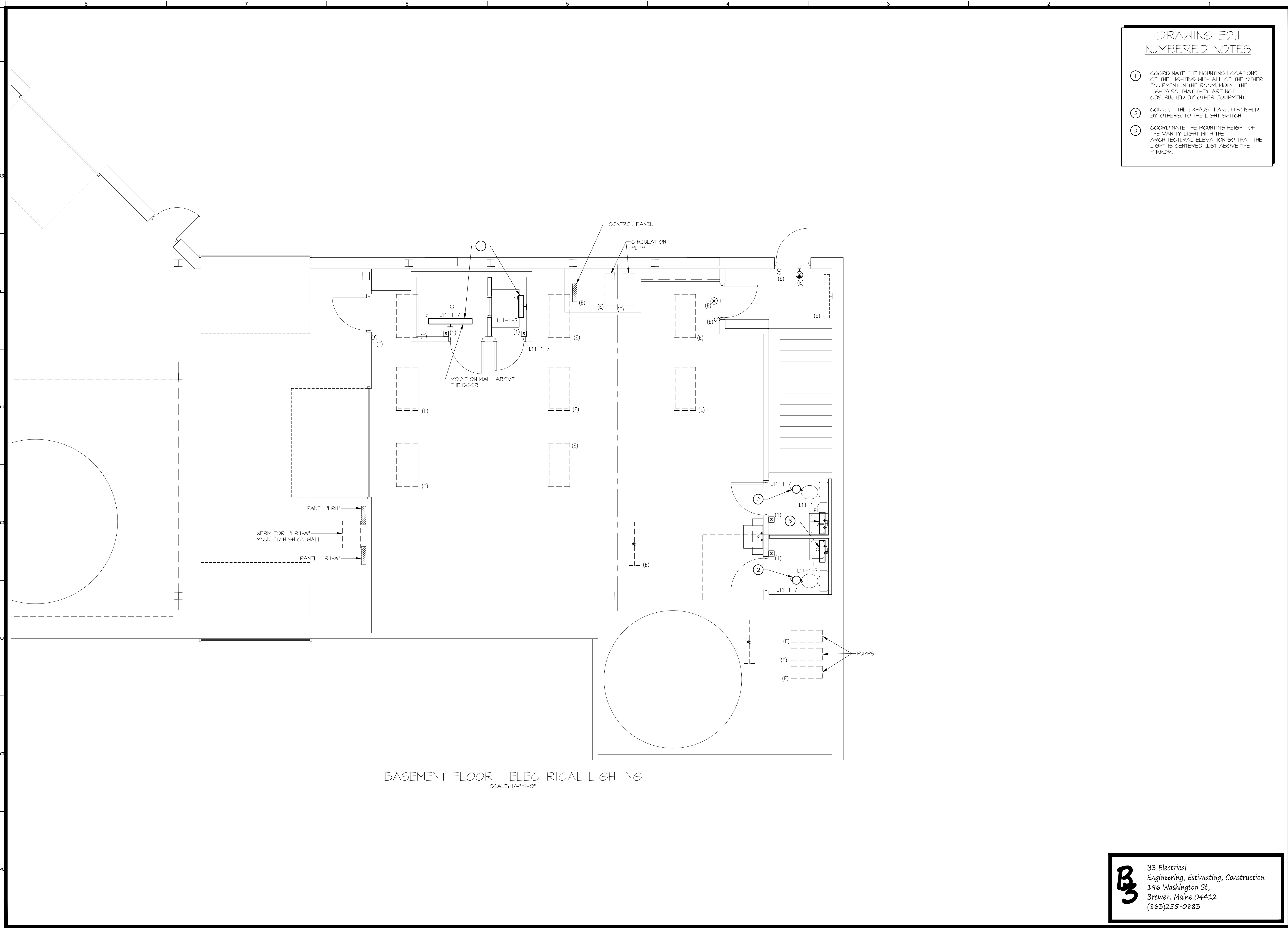


COPYRIGHT 2016 © B3 ELECTRICAL ENGINEERING LLC. ALL RIGHTS RESERVED. NO REPRODUCTION WITHOUT PRIOR WRITTEN PERMISSION

Jan 18, 2016 - 1:24pm  
 C:\Users\pbadger\Documents\B3 Engineering\Dirigo AE\ecomaine\CAD\ProjectSheets\Drawing Set\Electrical\E2.1.dwg

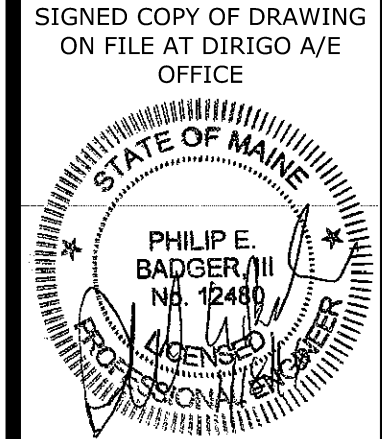


BASEMENT FLOOR - ELECTRICAL LIGHTING  
 SCALE: 1/4"=1'-0"

- DRAWING E2.1  
 NUMBERED NOTES**
- COORDINATE THE MOUNTING LOCATIONS OF THE LIGHTING WITH ALL OF THE OTHER EQUIPMENT IN THE ROOM, MOUNT THE LIGHTS SO THAT THEY ARE NOT OBSTRUCTED BY OTHER EQUIPMENT.
  - CONNECT THE EXHAUST FAN, FURNISHED BY OTHERS, TO THE LIGHT SWITCH.
  - COORDINATE THE MOUNTING HEIGHT OF THE VANITY LIGHT WITH THE ARCHITECTURAL ELEVATION SO THAT THE LIGHT IS CENTERED JUST ABOVE THE MIRROR.

**B3** B3 Electrical  
 Engineering, Estimating, Construction  
 196 Washington St.  
 Brewer, Maine 04412  
 (863)255-0883

**ecomaine**  
**LOCKER ROOM RENOVATION**  
 PORTLAND MAINE



**GROUND FLOOR LIGHTING PLAN**

REV.	DATE	DESCRIPTION
1	01/18/16	ISSUED FOR CONSTRUCTION

DRAWN BY: PEB  
 CHECKED BY: PEB

PH: (207) 225 - 3040  
 1071 Auburn Road  
 Suite G  
 Turner, ME 04282

**DIRIGO**  
 ARCHITECTURAL  
 ENGINEERING • CONSTRUCTION MANAGEMENT  
 EN: tperkins@dirigoae.com W: www.dirigoae.com

DATE:  
 PROJECT NO. 15-015  
 SHEET NO.  
**E2.1**