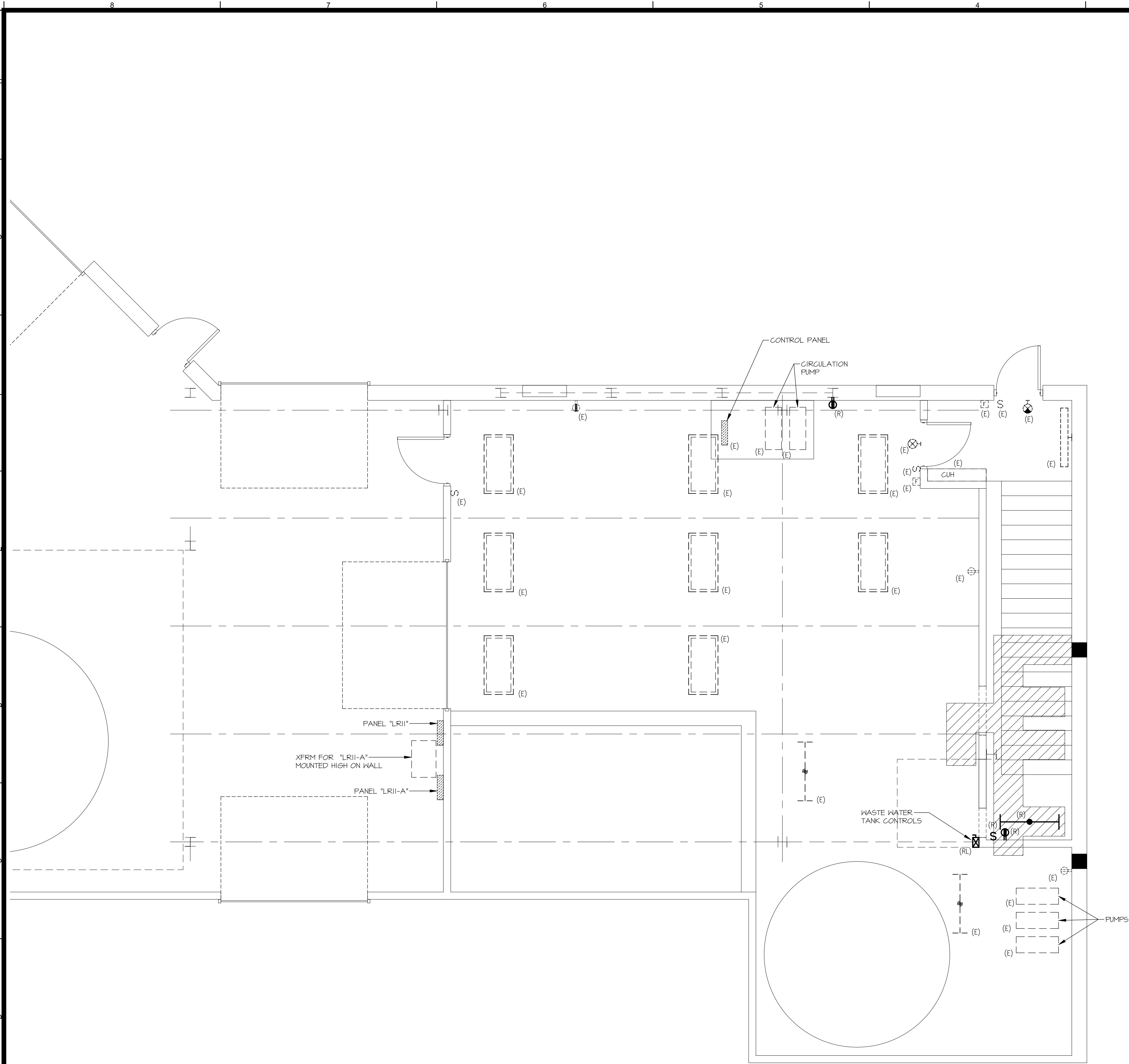


COPYRIGHT 2016 © B3 ELECTRICAL ENGINEERING LLC. ALL RIGHTS RESERVED. NO REPRODUCTION WITHOUT PRIOR WRITTEN PERMISSION

Jun 01, 2016 - 9:52am
C:\Users\pbadger\Documents\B3 Electrical\Dirigo AE\ecomaine\CAD\Project\Sheets\Drawing Set\Electrical\E1.1.dwg



BASEMENT FLOOR - ELECTRICAL DEMOLITION
SCALE: 1/4"=1'-0"

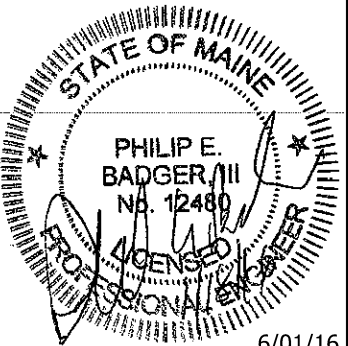
DEMOLITION
DRAWING NOTES

1. THE CONTRACTOR SHALL DISCONNECT AND REMOVE ALL EXISTING CIRCUITS TO MECHANICAL EQUIPMENT BEING REMOVED. REFER TO MECHANICAL DEMOLITION DRAWINGS FOR LOCATIONS.
2. WHERE ELECTRICAL ITEMS ARE REMOVED, ALL BRANCH CIRCUIT WIRING SHALL BE REMOVED BACK TO PANEL SERVING THE EQUIPMENT. WHERE CIRCUITS SERVE ADDITIONAL DEVICES OR EQUIPMENT REMAINING, WIRING SHALL BE REMOVED BACK TO THE NEAREST ACTIVE JUNCTION BOX.
3. THE CONTRACTOR SHALL MAINTAIN CONTINUITY OF EXISTING CIRCUITS THAT ARE TO REMAIN IN OPERATION.
4. ALL UNUSED CIRCUITS REMAINING AFTER REMOVALS SHALL BECOME SPARE IN PANELS.
5. ALL ELECTRICAL INFORMATION SHOWN IS FROM EXISTING DRAWINGS AND FIELD NOTES AND IS TO BE USED AS GUIDE FOR EQUIPMENT LOCATION. CONTRACTOR SHALL VISIT THE SITE TO VERIFY EXISTING CONDITIONS PRIOR TO SUBMISSION OF BID. NO ADDITIONAL COMPENSATION SHALL BE CONSIDERED FOR FAILURE TO OBSERVE THIS REQUIREMENT.
6. THE CONTRACTOR SHALL REFER TO ARCHITECTURAL DEMOLITION DRAWINGS FOR ADDITIONAL INFORMATION AND SCOPE OF DEMOLITION.
7. ALL MATERIALS AND EQUIPMENT REMOVALS SHALL BE DISPOSED OF AS DIRECTED BY THE OWNER OR THE ARCHITECT.
8. THE CONTRACTOR SHALL DISCONNECT AND REMOVE ALL ELECTRICAL WIRING AND EQUIPMENT AS REQUIRED WITHIN ALL AREAS TO BE RENOVATED. THIS SHALL INCLUDE, BUT NOT BE LIMITED TO, FIXTURES, DEVICES, OUTLETS, SWITCHES, RECEPTACLES, STARTERS, DISCONNECTS, PANELS, FEEDERS, ETC.
9. UNLESS OTHERWISE NOTED, EXISTING DEVICES TO BE REMOVED ARE SHOWN BOLD ON DEMOLITION PLANS.
10. THE CONTRACTOR SHALL REMOVE ALL ELECTRICAL DEVICES FROM EXISTING WALL AND CEILING BEING REMOVED AND MODIFIED UNDER THIS CONTRACT. ALL EXISTING CONDUIT AND WIRING FEEDING THESE DEVICES SHALL BE REMOVED, TERMINATED OR REUSED AS DESCRIBED BELOW.
 - A. CONDUIT FEEDING DEVICES FROM SLAB SHALL BE CUT OFF BELOW SLAB AND ABANDONED WITH HOLE IN SLAB BEING PATCHED BACK TO MATCH EXISTING. CONDUIT MAY ALSO BE EXTENDED IF NECESSARY, WITH NEW WIRING PULLED THE ENTIRETY OF CIRCUIT.
 - B. CONDUIT FEEDING DEVICES FROM ABOVE DROPPED CEILING SHALL BE DISCONNECTED AND REMOVED BACK TO THE SOURCE OR RECONNECTED AS DESCRIBED IN NEW CONSTRUCTION NOTES.
 - C. ELECTRICAL CONTRACTOR SHALL MAINTAIN THE INTEGRITY OF ALL EXISTING FEED-THROUGH CIRCUITS. WHERE ELECTRICAL DEVICES HAS BEEN REMOVED FROM MIDPOINT OF CIRCUIT, NEW WIRE SHALL BE PULLED AS REQUIRED.
11. ALL DEVICES SHOWN ARE BASED ON EXISTING DRAWINGS AND FIELD NOTES AND SHALL ASSIST CONTRACTOR FOR ESTIMATING PURPOSES ONLY.

B3 B3 Electrical
Engineering, Estimating, Construction
196 Washington St.
Brewer, Maine 04412
(863)255-0883

ecomaine
LOCKER ROOM RENOVATION
PORTLAND
MAINE

SIGNED COPY OF DRAWING
ON FILE AT DIRIGO AVE
OFFICE



**GROUND FLOOR ELECTRICAL
DEMO PLAN**

REV.	DATE	DESCRIPTION
1	01/18/16	ISSUED FOR CONSTRUCTION
2	6/01/16	ISSUED FOR SET #1

DRAWN BY: PEB
CHECKED BY: PEB

PH: (207) 225 - 3040
1071 Auburn Road
Suite G
Turner, ME 04282

DIRIGO
ARCHITECTURAL
ENGINEERING • CONSTRUCTION MANAGEMENT
EN: tperkins@dirigoae.com W: www.dirigoae.com

DATE: 6/01/16
PROJECT NO. 15-015
SHEET NO.
E1.1