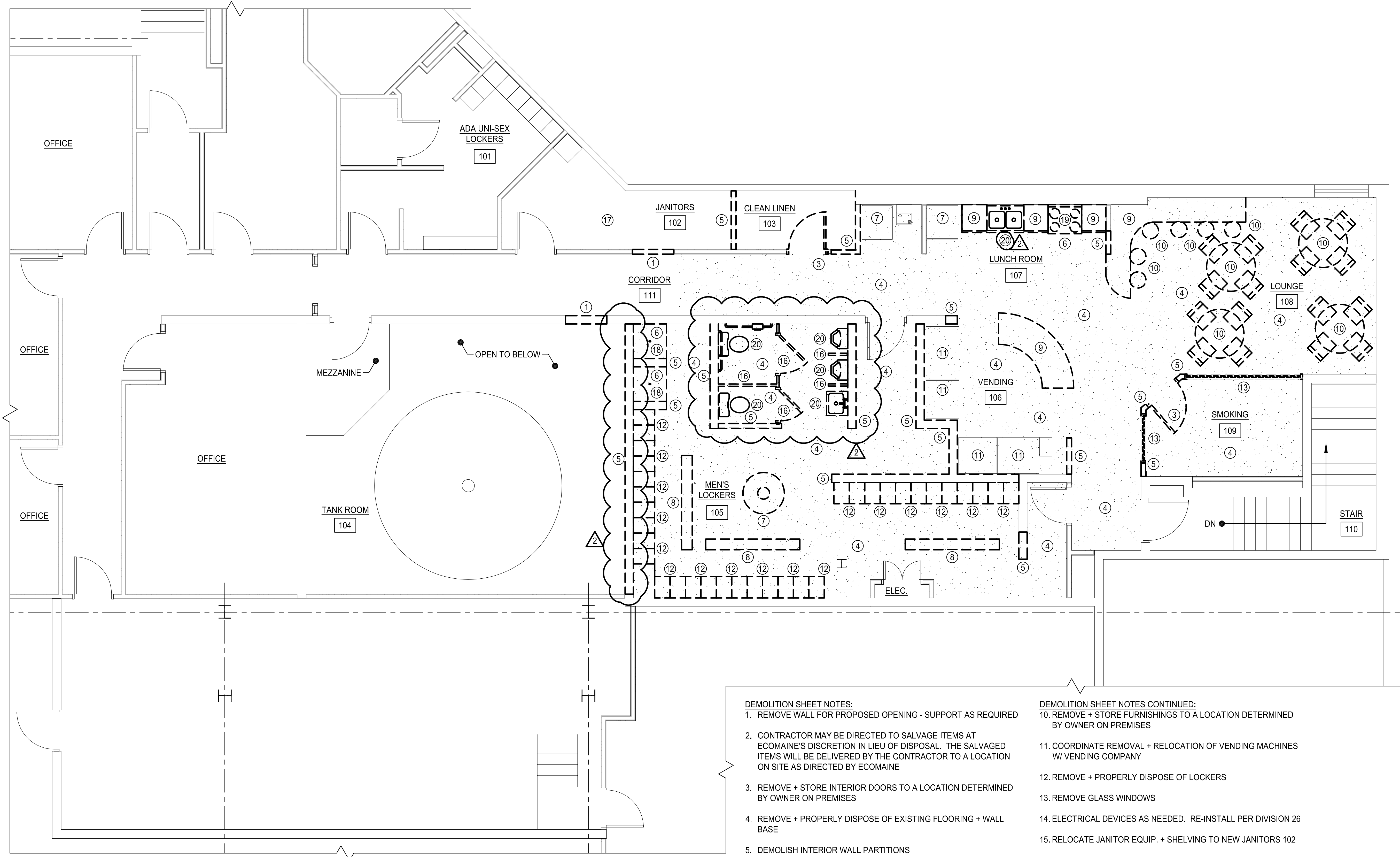


COPYRIGHT 2016 © DIRIGO ARCHITECTURAL ENGINEERING LLC. ALL RIGHTS RESERVED. NO REPRODUCTION WITHOUT PRIOR WRITTEN PERMISSION



DEMO LEVEL 2 FLOOR PLAN
 22X34 SCALE: 1/4"=1'-0"
 11X17 SCALE: 1/8"=1'-0"
 1
 D1.2

- DEMOLITION SHEET NOTES:**
1. REMOVE WALL FOR PROPOSED OPENING - SUPPORT AS REQUIRED
 2. CONTRACTOR MAY BE DIRECTED TO SALVAGE ITEMS AT ECOMAINE'S DISCRETION IN LIEU OF DISPOSAL. THE SALVAGED ITEMS WILL BE DELIVERED BY THE CONTRACTOR TO A LOCATION ON SITE AS DIRECTED BY ECOMAINE
 3. REMOVE + STORE INTERIOR DOORS TO A LOCATION DETERMINED BY OWNER ON PREMISES
 4. REMOVE + PROPERLY DISPOSE OF EXISTING FLOORING + WALL BASE
 5. DEMOLISH INTERIOR WALL PARTITIONS
 6. REMOVE + PROPERLY DISPOSE OF PLUMBING FIXTURES
 7. REMOVE + RELOCATE PLUMBING FIXTURES
 8. REMOVE + PROPERLY DISPOSE OF BENCHES
 9. REMOVE + PROPERLY DISPOSE OF KITCHEN CABINETS + COUNTERTOPS
- DEMOLITION SHEET NOTES CONTINUED:**
10. REMOVE + STORE FURNISHINGS TO A LOCATION DETERMINED BY OWNER ON PREMISES
 11. COORDINATE REMOVAL + RELOCATION OF VENDING MACHINES W/ VENDING COMPANY
 12. REMOVE + PROPERLY DISPOSE OF LOCKERS
 13. REMOVE GLASS WINDOWS
 14. ELECTRICAL DEVICES AS NEEDED. RE-INSTALL PER DIVISION 26
 15. RELOCATE JANITOR EQUIP. + SHELVING TO NEW JANITORS 102
 16. REMOVE + PROPERLY DISPOSE OF TOILET PARTITIONS
 17. REMOVE AND STORE PLUMBING FIXTURES FOR RE-INSTALLATION
 18. REMOVE CERAMIC TILE, WATERPROOFING, TILE BACKER/MUD SET
 19. REMOVE EXISTING EXHAUST HOOD + CAP DUCT
 20. REMOVE + STORE PLUMBING FIXTURES TO A LOCATION DETERMINED BY OWNER ON PREMISES

SIGNED COPY OF DRAWING ON FILE AT DIRIGO A/E OFFICE

THOMAS W. PERKINS
 No. 11710
 LICENSED PROFESSIONAL ENGINEER
 STATE OF MAINE
 6/1/16

DEMO LEVEL 2 FLOOR PLAN

REV.	DATE	DESCRIPTION
1	1/18/16	ISSUED FOR CONSTRUCTION
2	6/1/16	ISSUED FOR SET #1
3		

DRAWN BY: CGB
 CHECKED BY: TWP

PH: (207) 225 - 3040
 1071 Auburn Road
 Suite G
 Turner, ME 04282

DIRIGO ARCHITECTURAL
 ENGINEERING + CONSTRUCTION MANAGEMENT
 E/M: tperkins@dirigoae.com W: www.dirigoae.com