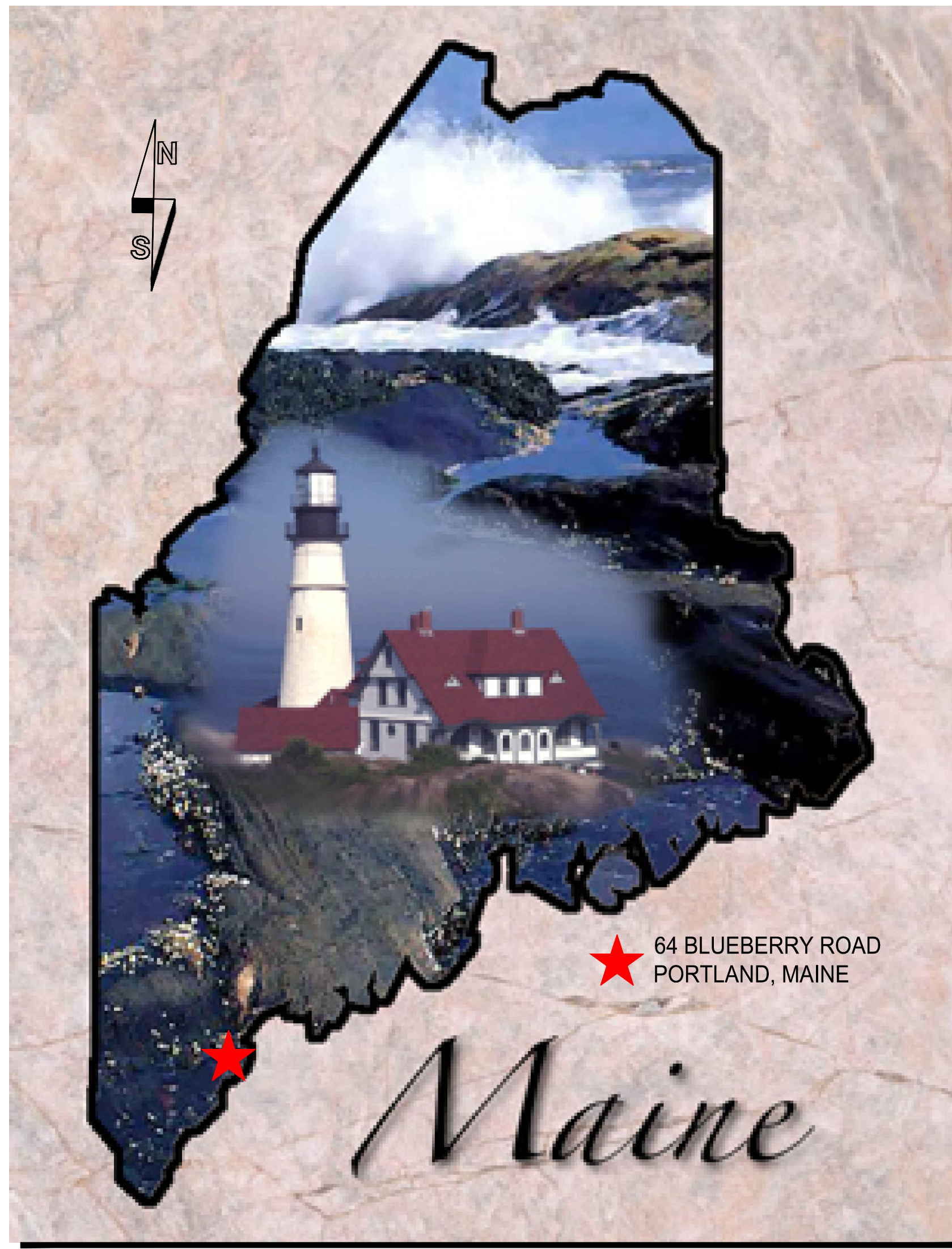


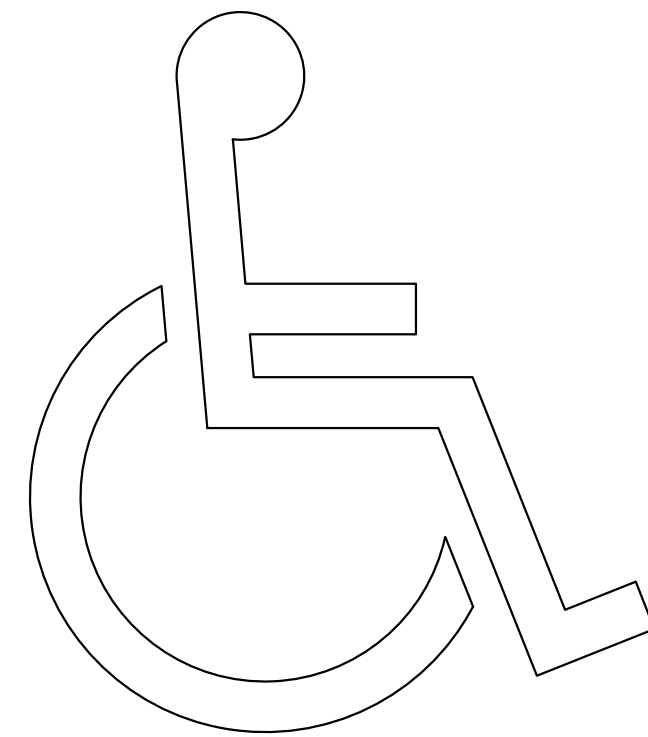
ecomaine

PORTLAND, MAINE

PROJECT #: 15-015



LOCATION MAP

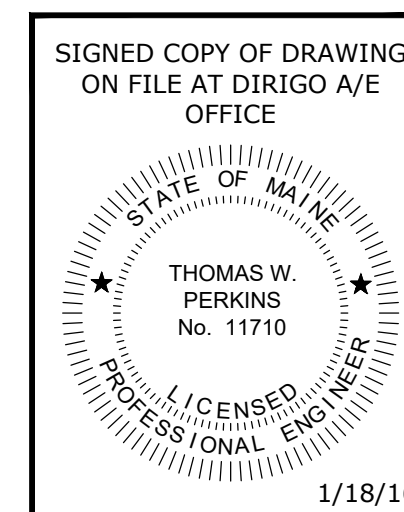


ADA COMPLIANT

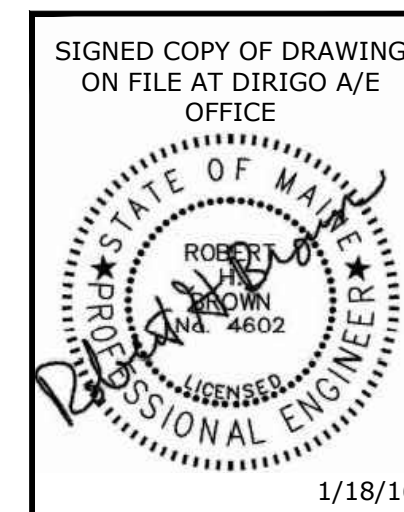


VICINITY MAP

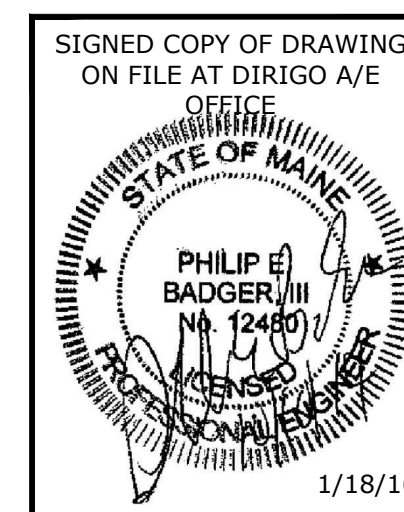
DRAWING INDEX		
GENERAL	FIRE PROTECTION	MECHANICAL
GO.1 GENERAL NOTES + CODE COMPLIANCE	FP1.0 FIRE PROTECTION PLAN	M0.1 NOTES, ABBREVIATIONS, + LEGENDS
DEMO	ARCHITECTURAL	M0.2 SCHEDULES
D1.1 DEMO GROUND FLOOR PLAN	A0.1 NOTES, ABBREVIATIONS, + LEGENDS	M1.1 GROUND FLOOR HVAC MODIFICATIONS
D1.2 DEMO LEVEL 2 FLOOR PLAN	A0.2 SCHEDULES	M1.2 LEVEL 2 HVAC MODIFICATIONS
D1.3 DEMO LEVEL 2 FLOOR REFLECTED CEILING PLAN	A1.1 GROUND FLOOR PLAN	M3.1 VAC BOOTH AND FAN DETAILS
CIVIL	A1.2 LEVEL 2 FLOOR PLAN	ELECTRICAL
C0.1 NOTES, ABBREVIATIONS, + LEGEND	A1.3 LEVEL 2 FL. REFLECTED CLG. PLAN	E0.1 SCHEDULES SYMBOLS & ABBREVIATIONS
C1.1 SITE PLAN	A1.4 ENLARGED MEN'S LOCKER ROOM PLANS	E0.2 ELECTRICAL SCHEDULES
C3.1 DETAILS	A1.5 ENLARGED ADA KITCHEN PLAN + DETAILS	E1.1 GROUND FLOOR ELECTRICAL DEMO
STRUCTURAL	A1.6 FLOORING INSTALLATION PLAN	E1.2 LEVEL 2 ELECTRICAL DEMO
S0.1 NOTES, ABBREVIATIONS, + LEGENDS	A2.1 INTERIOR KITCHEN ELEVATIONS	E2.1 GROUND FLOOR LIGHTING
S0.2 SCHEDULES NOT USED	A3.1 BUILDING SECTION + WALL TYPES	E2.2 LEVEL 2 LIGHTING PLAN
S1.1 MEZZANINE FRAMING PLAN + DETAILS	A3.2 CEILING AND WALL TYPES	E3.1 GROUND FLOOR POWER & SYSTEMS PLAN
S1.2 MEZZANINE ELEVATION + DETAILS DELETED	PLUMBING	E3.2 LEVEL 2 ELECTRICAL POWER & SYSTEMS PLAN
S3.1 VAC ROOM CEILING SECTION	P0.1 NOTES, ABBREVIATIONS, + LEGENDS	
S3.2 FLOOR PATCH AND UNDERSLAB UTILITY DETAIL	P0.2 SCHEDULES NOT USED	
	P1.1 GROUND FLOOR CW + HW PIPING PLAN	
	P1.2 LEVEL 2 FLOOR CW+HW PIPING PLAN	
	P1.3 GROUND FLOOR SANITARY + VENT UNDERSLAB PLAN	
	P1.4 GROUND FLOOR SANITARY + VENT CEILING PLAN	
	P1.5 LEVEL 2 FLOOR SANITARY + VENT PLAN	
	P3.1 PLUMBING DETAILS	
	P3.2 GRINDER PUMP AND BASIN DETAIL	
UPDATED THROUGH SHEET #1		



GENERAL, FIRE PROTECTION, DEMO, CIVIL, STRUCTURAL, + ARCHITECTURAL



PLUMBING + MECHANICAL



ELECTRICAL



"STATEMENT AND NOTICE OF COOPERATION"
 RELEASE OF THESE PLANS CONTEMPLATES FURTHER COOPERATION AMONG THE OWNER, HIS CONTRACTOR AND THE ENGINEER. DESIGN AND CONSTRUCTION ARE COMPLEX. ALTHOUGH THE ENGINEER AND HIS CONSULTANTS HAVE PERFORMED THEIR SERVICES WITH DUE CARE AND DILIGENCE, THEY CANNOT GUARANTEE PERFECTION. COMMUNICATION IS IMPERFECT, AND EVERY CONTINGENCY CANNOT BE ANTICIPATED. ANY AMBIGUITY OR DISCREPANCY DISCOVERED BY THE USE OF THESE PLANS NEED TO BE REPORTED IMMEDIATELY TO THE ENGINEER. FAILURE TO NOTIFY THE ENGINEER COMPOUNDS MISUNDERSTANDING AND INCREASES CONSTRUCTION COSTS. A FAILURE TO COOPERATE BY A SIMPLE NOTICE TO THE ENGINEER RELIEVES THE ENGINEER FROM RESPONSIBILITY FOR ALL CONSEQUENCES. CHANGES MADE FROM THE PLANS WITHOUT CONSENT OF THE ENGINEER ARE UNAUTHORIZED, AND RELIEVE THE ENGINEER OF RESPONSIBILITY FOR ALL CONSEQUENCES ARISING OUT OF SUCH CHANGES. IN MANY CASES SUCH RELIEF OF RESPONSIBILITY INCLUDES RELIEF OF OWNER RESPONSIBILITY. THE CONTRACTOR AND HIS SUBCONTRACTORS NEED BE DILIGENT IN THESE MATTERS AT ALL TIMES PRIOR TO AND DURING CONSTRUCTION. REFER TO CONTRACT GENERAL AND SUPPLEMENTAL CONDITION AND SPECIFICATIONS (PROJECT MANUAL) FOR ADDITIONAL DETAILS AND CONDITIONS.