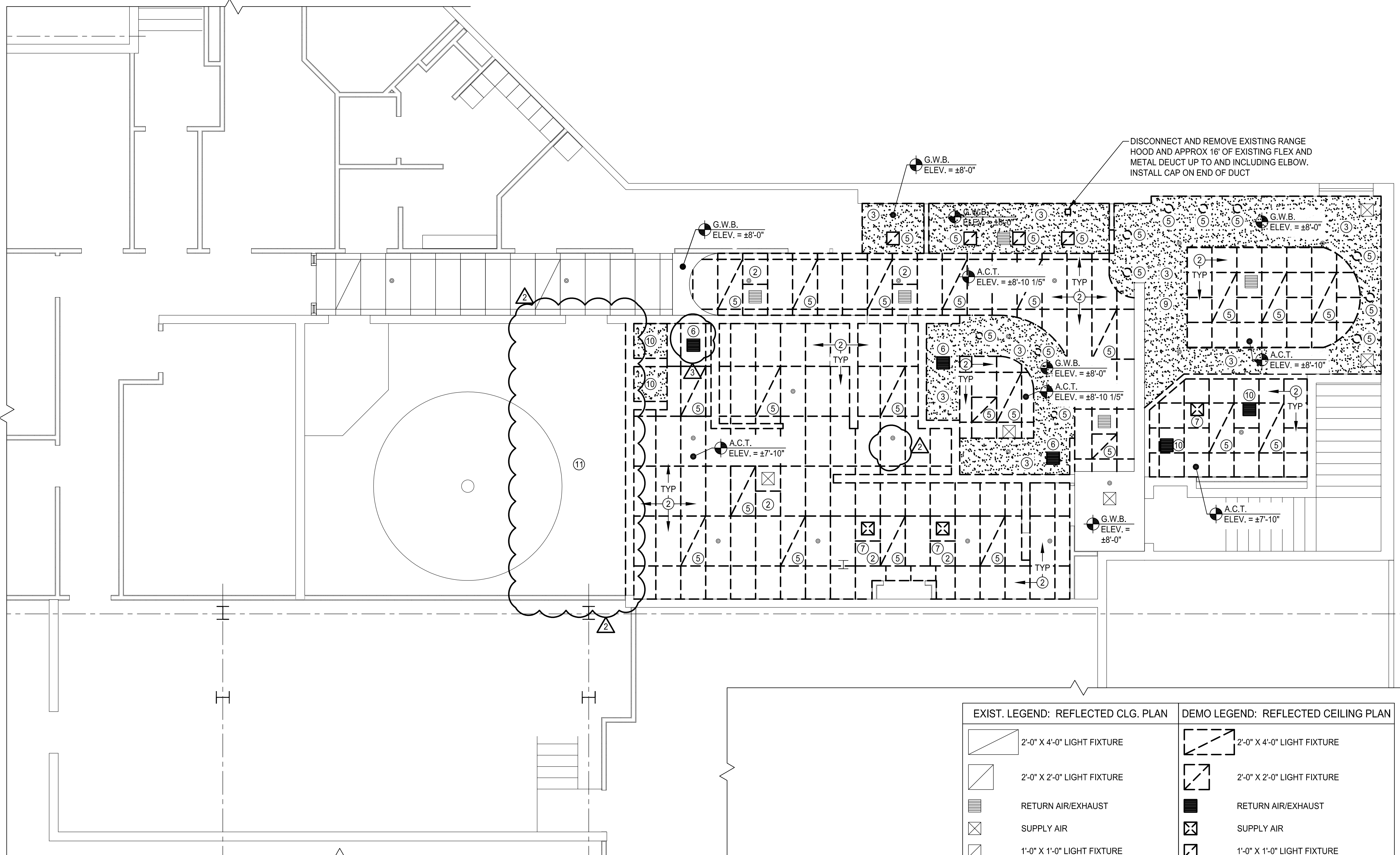


COPYRIGHT 2016 © DIRIGO ARCHITECTURAL ENGINEERING LLC. ALL RIGHTS RESERVED. NO REPRODUCTION WITHOUT PRIOR WRITTEN PERMISSION



- DEMOLITION SHEET NOTES:**
- CONTRACTOR MAY BE DIRECTED TO SALVAGE ITEMS AT ECOMAINE'S DISCRETION IN LIEU OF DISPOSAL. THE SALVAGED ITEMS WILL BE DELIVERED BY THE CONTRACTOR TO A LOCATION ON SITE AS DIRECTED BY ECOMAINE
 - REMOVE + PROPERLY DISPOSE OF ACOUSTIC CEILING TILES
 - REMOVE + PROPERLY DISPOSE OF GYPSUM CEILING SYSTEM
 - REMOVE + PROPERLY DISPOSE OF CERAMIC TILED CEILING

- DEMOLITION SHEET NOTES CONTINUED:**
- REMOVE + PROPERLY DISPOSE OF LIGHT FIXTURES + LAMPS
 - REMOVE + RELOCATE RETURN AIR/EXHAUST
 - REMOVE + RELOCATE SUPPLY AIR
 - REMOVE + RELOCATE SPRINKLER HEADS
 - REMOVE + RELOCATE CEILING ACCESS PANEL
 - REMOVE + PROPERLY DISPOSE OF SUPPLY AIR

DEMOLITION SHEET NOTES CONTINUED:

11. REMOVE, RELOCATE OR ADJUST EXISTING DUCTWORK TO ACCOMMODATE NEW CONSTRUCTION (VIF)

DEMOLITION SHEET NOTES CONTINUED:

22X34 SCALE: 1/4"=1'-0"
11X17 SCALE: 1/8"=1'-0"

1
D1.3

EXIST. LEGEND: REFLECTED CLG. PLAN	DEMO LEGEND: REFLECTED CEILING PLAN
2'-0" X 4'-0" LIGHT FIXTURE	2'-0" X 4'-0" LIGHT FIXTURE
2'-0" X 2'-0" LIGHT FIXTURE	2'-0" X 2'-0" LIGHT FIXTURE
RETURN AIR/EXHAUST	RETURN AIR/EXHAUST
SUPPLY AIR	SUPPLY AIR
1'-0" X 1'-0" LIGHT FIXTURE	1'-0" X 1'-0" LIGHT FIXTURE
CANDESCENT/PENDANT LIGHT FIXTURE	CANDESCENT/PENDANT LIGHT FIXTURE
SPRINKLER HEAD	SPRINKLER HEAD
ACOUSTIC CEILING SYSTEM	ACOUSTIC CEILING SYSTEM
	GYPSUM CEILING SYSTEM OR CERAMIC TILED CEILING

NOTE:
EXISTING TO REMAIN

NOTE:
SEE DEMOLITION SHEET NOTES

ecomaine

LOCKER ROOM RENOVATION

PORTLAND MAINE

SIGNED COPY OF DRAWING ON FILE AT DIRIGO A/E OFFICE

THOMAS W. PERKINS
No. 11710
LICENSED PROFESSIONAL ENGINEER
STATE OF MAINE

6/1/16

DEMOLITION SHEET 2 FL. REFLECTED CLG. PLAN

REV.	DATE	DESCRIPTION	CHECKED BY:
1	1/18/16	ISSUED FOR CONSTRUCTION	TWP
2	6/1/16	ISSUED FOR ST. #1	TWP
3			TWP

DRAWN BY: CGB

PH: (207) 225 - 3040
1071 Auburn Road
Suite G
Turner, ME 04282

DIRIGO ARCHITECTURAL
ENGINEERING & CONSTRUCTION MANAGEMENT
E/M: tperkins@dirigoae.com W: www.dirigoae.com

DATE: 6/1/16

PROJECT NO. 15-015

SHEET NO.

D1.3