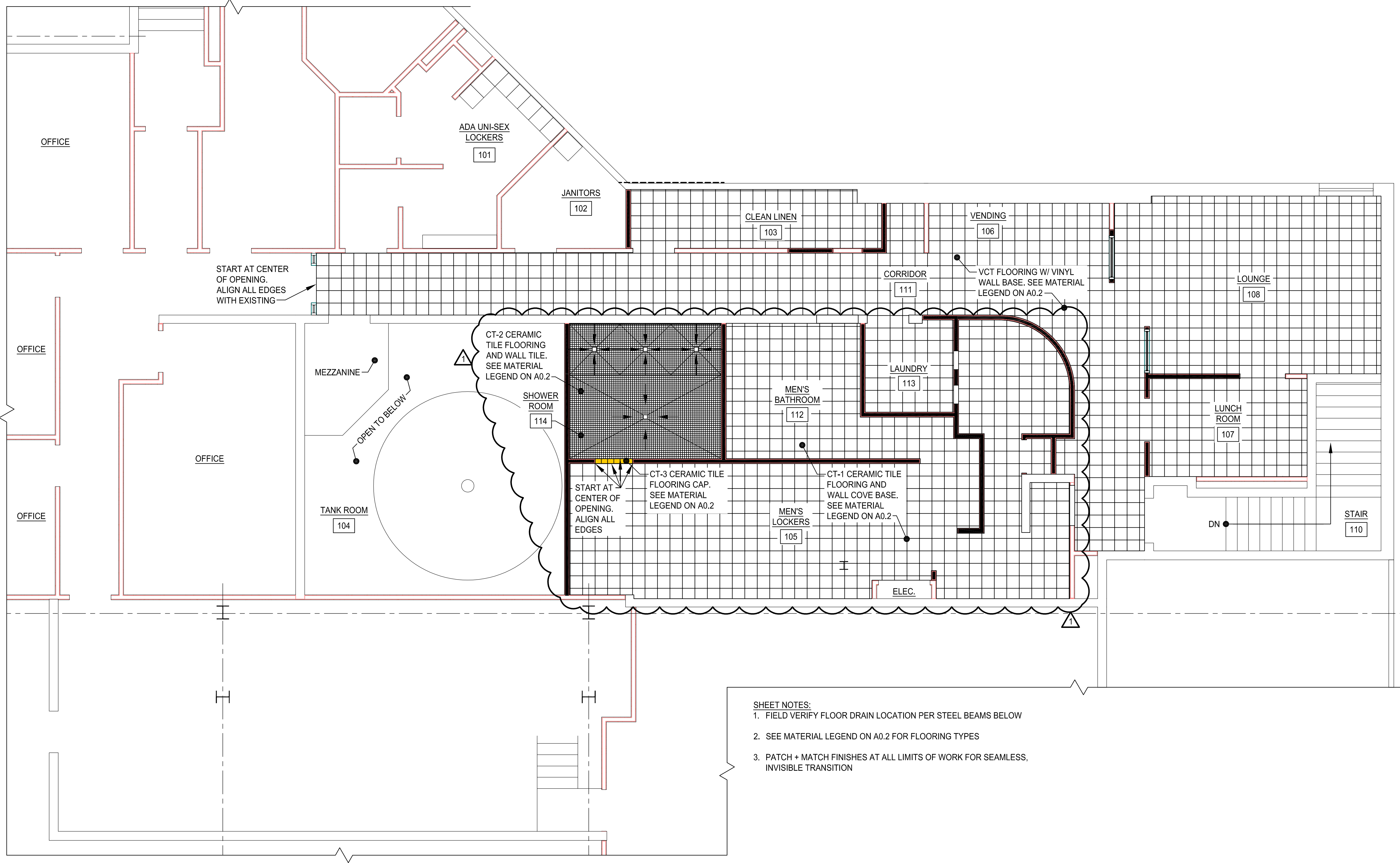
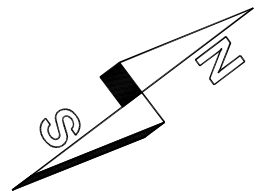


COPYRIGHT 2016 © DIRIGO ARCHITECTURAL ENGINEERING LLC. ALL RIGHTS RESERVED. NO REPRODUCTION WITHOUT PRIOR WRITTEN PERMISSION



- SHEET NOTES:**
1. FIELD VERIFY FLOOR DRAIN LOCATION PER STEEL BEAMS BELOW
 2. SEE MATERIAL LEGEND ON A0.2 FOR FLOORING TYPES
 3. PATCH + MATCH FINISHES AT ALL LIMITS OF WORK FOR SEAMLESS, INVISIBLE TRANSITION



FLOORING INSTALLATION PLAN
 22X34 SCALE: 1/4"=1'-0"
 11X17 SCALE: 1/8"=1'-0"

1
A1.6

ecomaine
LOCKER ROOM RENOVATION
 PORTLAND
 MAINE

SIGNED COPY OF DRAWING
 ON FILE AT DIRIGO A/E
 OFFICE

STATE OF MAINE
 THOMAS W. PERKINS
 No. 11710
 LICENSED PROFESSIONAL ENGINEER
 6/1/16

FLOORING INSTALLATION PLAN

REV.	DATE	DESCRIPTION	CHECKED BY
1	6/1/16	ISSUED FOR SI #1	TWP

DRAWN BY: CGB

PH: (207) 225 - 3040
 1071 Auburn Road
 Suite G
 Turner, ME 04282

DIRIGO ARCHITECTURAL
 ENGINEERING • CONSTRUCTION MANAGEMENT
 EM: tperkins@dirigoae.com W: www.dirigoae.com

DATE: 6/1/16
 PROJECT NO. 15-015
 SHEET NO.
A1.6