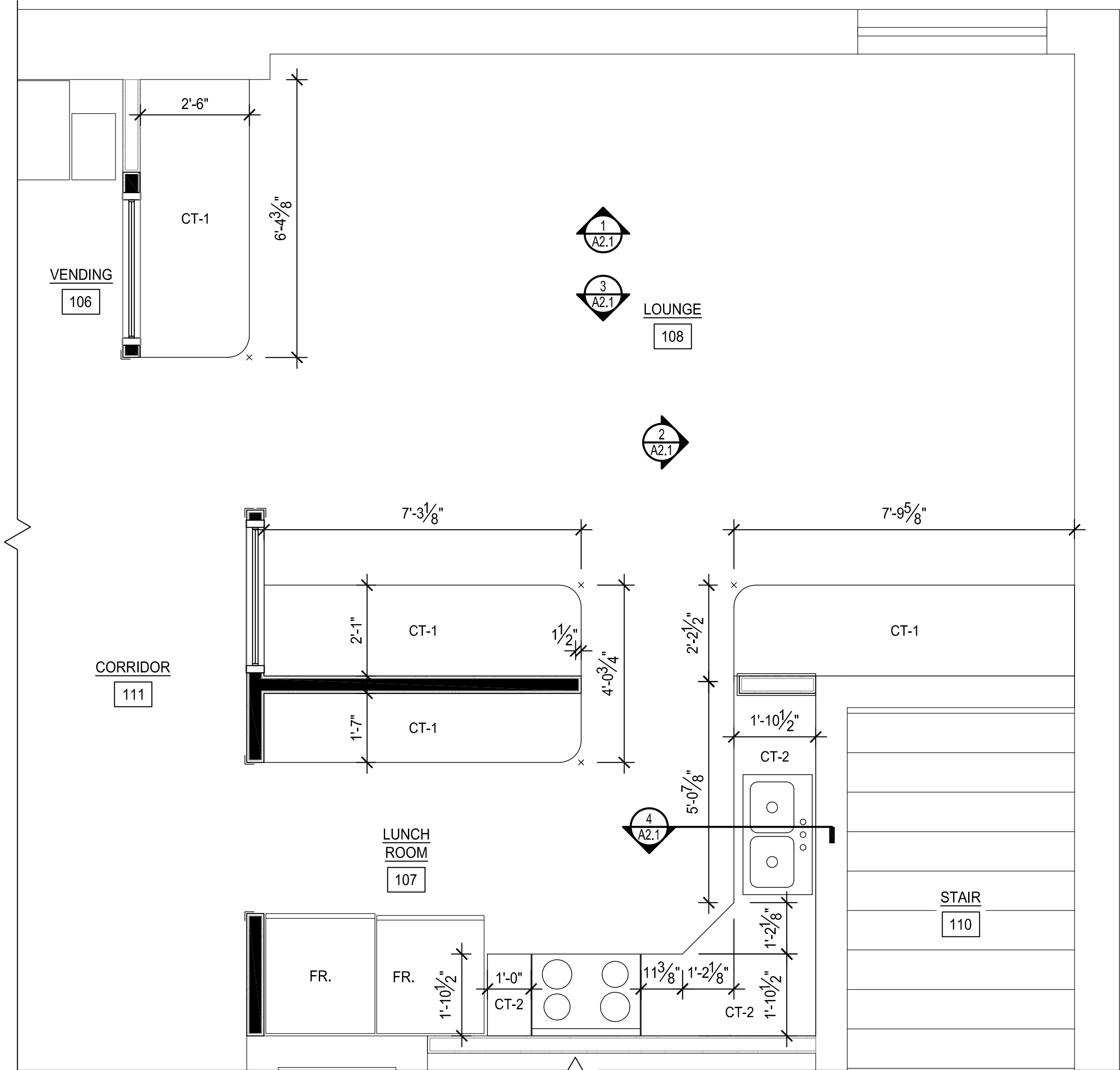
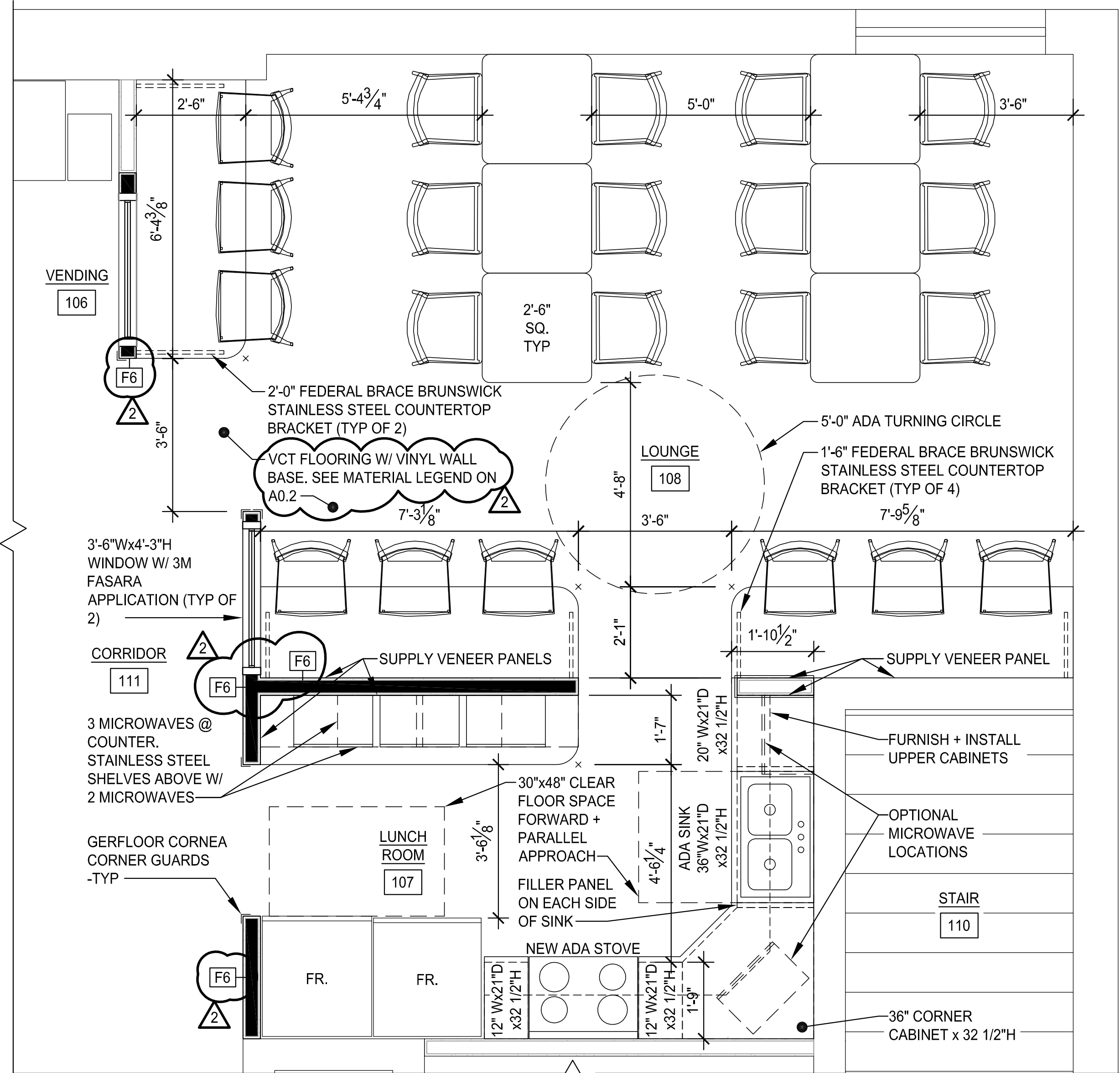


COPYRIGHT 2016 © DIRIGO ARCHITECTURAL ENGINEERING LLC. ALL RIGHTS RESERVED. NO REPRODUCTION WITHOUT PRIOR WRITTEN PERMISSION



COUNTERTOP SCHEDULE

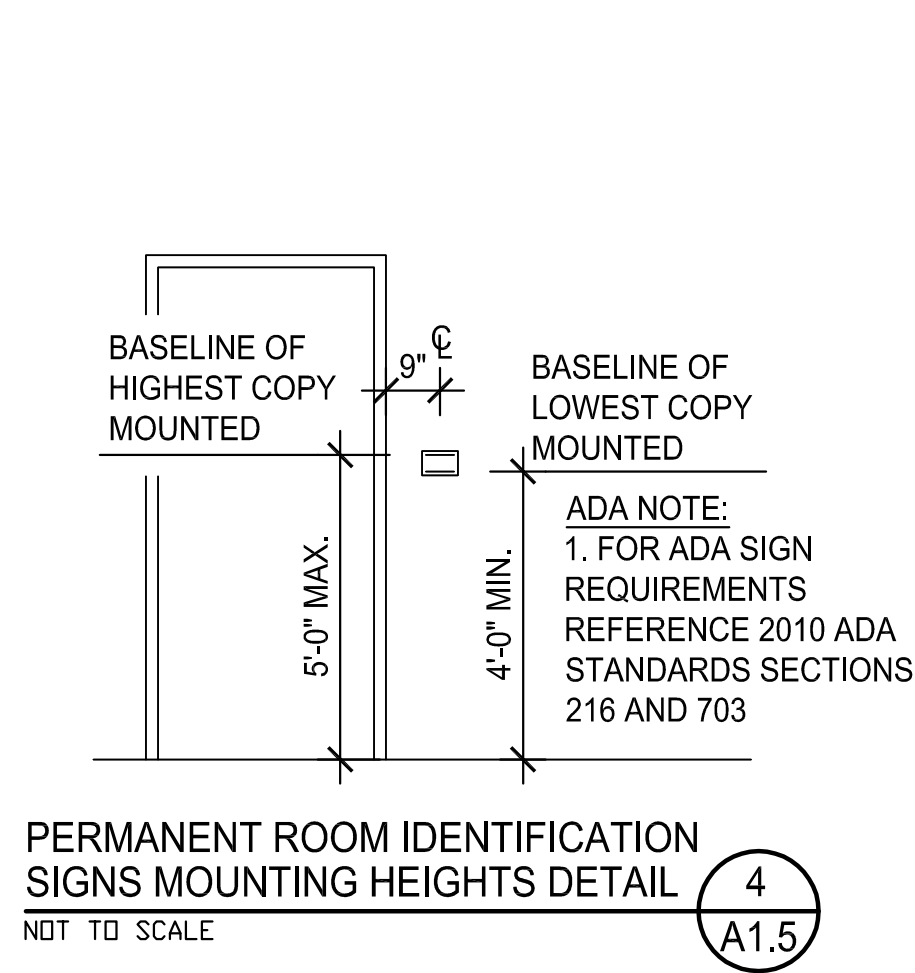
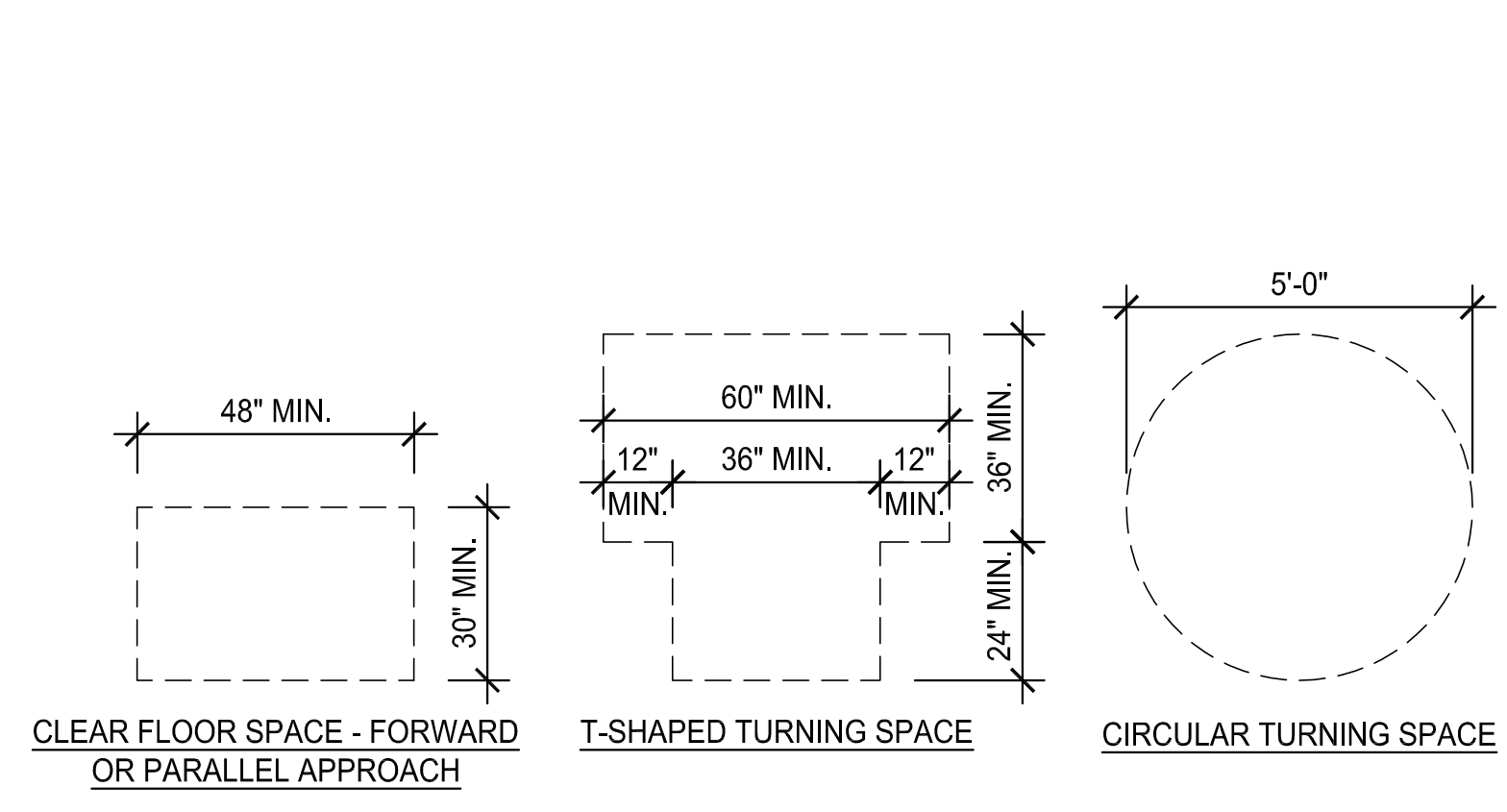
MARK	MANUFACTURER	COUNTERTOP ELEVATION	SIZE	MATERIAL	HORIZONTAL APRON
CT-1	FORMICA. COLOR TBD BY OWNER	2'-11 1/2"	3/4" THICK	PLASTIC LAMINATE	4" HEIGHT WHERE NO CABINETS ARE LOCATED
CT-2	FORMICA. COLOR TBD BY OWNER	2'-10"	3/4" THICK	PLASTIC LAMINATE	4" HEIGHT WHERE NO CABINETS ARE LOCATED

ADA SIGN SCHEDULE

TYPE	MANUFACTURER	PART INFO	QUANTITY	SIZE	MATERIAL	REMARKS
UNISEX ACCESSIBLE RESTROOM SIGN - WHITE ON BLUE	ADA SIGN FACTORY	EP1506		6"Wx9"Hx1/8"TH	STYRENE	OR APPROVED EQUAL
WHEELCHAIR ACCESSIBLE EXIT SIGN - WHITE ON BLUE	ADA SIGN FACTORY	EP1545		6"Wx9"Hx1/8"TH	ACRYLIC	OR APPROVED EQUAL
ACCESSIBLE DIRECTION SIGNS						

ENLARGED ADA KITCHEN PLAN
 22X34 SCALE: 1/2"=1'-0"
 11X17 SCALE: 1/4"=1'-0"

ENLARGED ADA KITCHEN COUNTERTOP PLAN
 22X34 SCALE: 1/2"=1'-0"
 11X17 SCALE: 1/4"=1'-0"



ecomaine
LOCKER ROOM RENOVATION
 PORTLAND MAINE

SIGNED COPY OF DRAWING ON FILE AT DIRIGO A/E OFFICE

THOMAS W. PERKINS
 No. 11710
 LICENSED PROFESSIONAL ENGINEER
 6/1/16

ENLARGED ADA KITCHEN PLANS + DETAILS

REV.	DATE	DESCRIPTION	CHECKED BY: TWP
1	1/18/16	ISSUED FOR CONSTRUCTION	
2	6/1/16	ISSUED FOR SI #1	
3			

PH: (207) 225 - 3040
 1071 Auburn Road
 Suite G
 Turner, ME 04282

DIRIGO
ARCHITECTURAL
 ENGINEERING • CONSTRUCTION MANAGEMENT
 EMail: tperkins@dirigoae.com W: www.dirigoae.com

DATE: 6/1/16
 PROJECT NO. 15-015
 SHEET NO.
A1.5