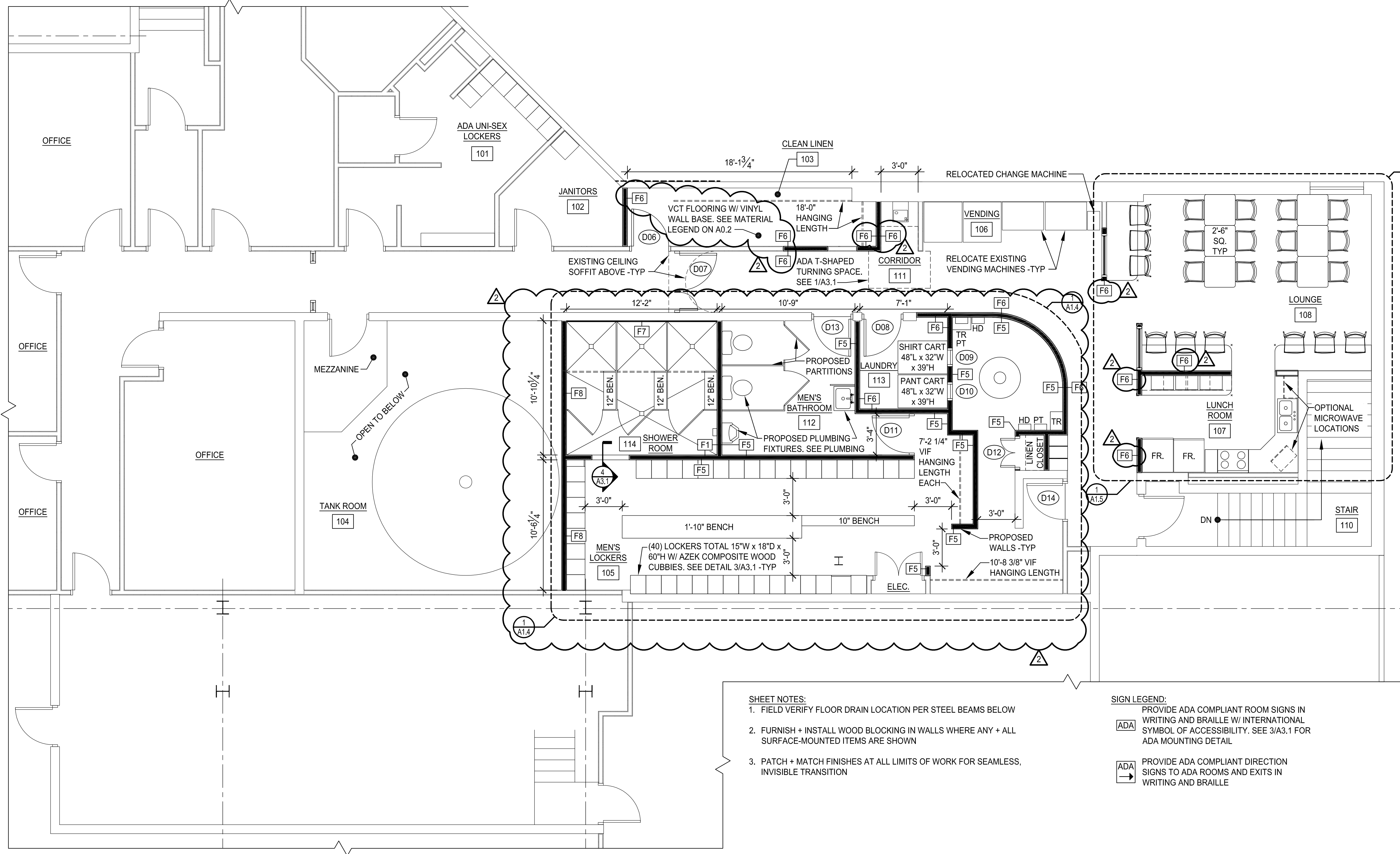


COPYRIGHT 2016 © DIRIGO ARCHITECTURAL ENGINEERING LLC. ALL RIGHTS RESERVED. NO REPRODUCTION WITHOUT PRIOR WRITTEN PERMISSION

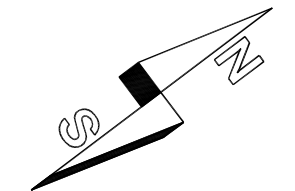


SHEET NOTES:

1. FIELD VERIFY FLOOR DRAIN LOCATION PER STEEL BEAMS BELOW
2. FURNISH + INSTALL WOOD BLOCKING IN WALLS WHERE ANY + ALL SURFACE-MOUNTED ITEMS ARE SHOWN
3. PATCH + MATCH FINISHES AT ALL LIMITS OF WORK FOR SEAMLESS, INVISIBLE TRANSITION

SIGN LEGEND:

- PROVIDE ADA COMPLIANT ROOM SIGNS IN WRITING AND BRAILLE W/ INTERNATIONAL SYMBOL OF ACCESSIBILITY. SEE 3/A3.1 FOR ADA MOUNTING DETAIL
- PROVIDE ADA COMPLIANT DIRECTION SIGNS TO ADA ROOMS AND EXITS IN WRITING AND BRAILLE



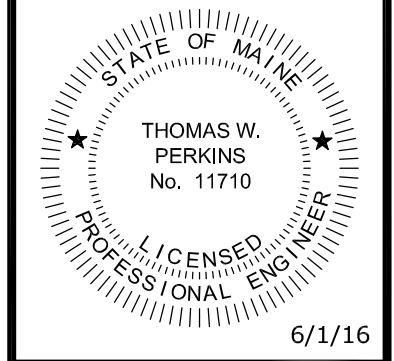
LEVEL 2 FLOOR PLAN - OPTION C

22X34 SCALE: 1/4"=1'-0"
11X17 SCALE: 1/8"=1'-0"

1
A1.2

ecomaine
LOCKER ROOM RENOVATION
 PORTLAND
 MAINE

SIGNED COPY OF DRAWING ON FILE AT DIRIGO A/E OFFICE



REV.	DATE	DESCRIPTION
1	1/18/16	ISSUED FOR CONSTRUCTION
2	6/1/16	ISSUED FOR SI #1
3		

DRAWN BY: CGB
 CHECKED BY: TWP

PH: (207) 225 - 3040
1071 Auburn Road
Suite G
Turner, ME 04282

DIRIGO
ARCHITECTURAL
 ENGINEERING • CONSTRUCTION MANAGEMENT
 EM: tperkins@dirigoae.com W: www.dirigoae.com

DATE: 6/1/16
PROJECT NO. 15-015

SHEET NO.

A1.2