

GENERAL NOTES:

1. All hollow metal frames to be painted P-1, unless noted otherwise.
2. Accent wall implies corner to corner, floor to ceiling.
3. All drywall soffits to be painted P-1, unless noted otherwise.

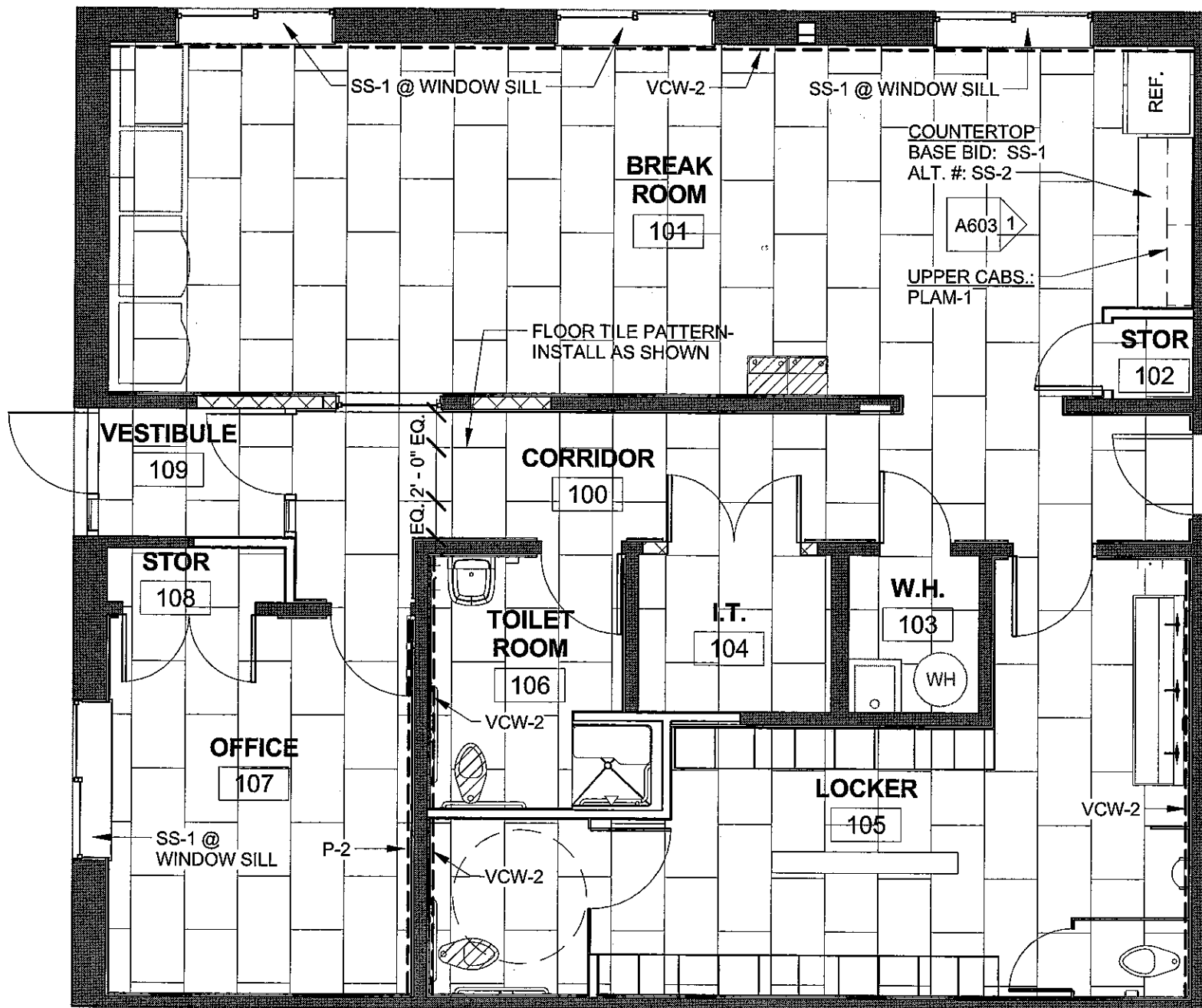
FINISH MATERIALS LEGEND

P	PAINT
PLAM	PLASTIC LAMINATE
PT	PORCELAIN TILE
SS	SOLID SURFACE
VWC	VINYL WALL COVERING

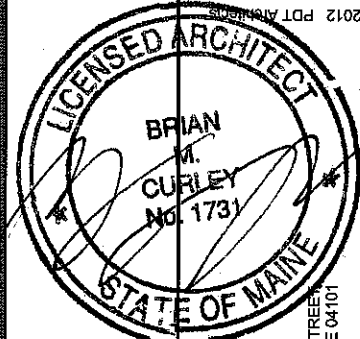
FINISH PRODUCTS

PT-1A (FIELD TILE)	STONE SOURCE ECOTECH COLOR: ECOLIGHT FINISH: STRUTTURATO [R11] FORMAT: 24" X 48" #718565
PT-1B (BASE)	STONE SOURCE ECOTECH COLOR: ECOLIGHT FINISH: STRUTTURATO [R11] FORMAT: 4" X 24" #718787
VWC-1	WOLF GORDON VYCON PATTERN: METALLINE MARRAKESH COLOR: ALUMINUM Y46500MK REPEAT: 1.125" H. X .25" W., HALF DROP MATCH: REVERSIBLE, RANDOM MATCH PATTERN
VCW-2	MDC PATTERN: MURPHY COLOR: CYBERSPACE #MMU3513 REPEAT: 17.66" HORIZONTAL, 12" VERTICAL MATCH: REVERSE HANG / STRAIGHT ACROSS MATCH
P-1 (WALLS, HM TRIM)	MDC CERAMIC PAINT COLOR: CP135
P-2 (ACCENT WALL)	MDC CERAMIC PAINT COLOR: MATCH SHERWIN WILLIAMS "ORGANIC GREEN" #6732
PLAM-1	PLASTIC LAMINATE ARBORITE P-623 MX COLOR: BRUSHED ALUMINUM
SS-1	VETRAZZO COLOR: PALLADIAN GRAY
SS-2	CONCRETE WITH CRUSHED GLASS

ROOM FINISH SCHEDULE								
NUMBER	ROOM NAME	FLOOR	BASE MATL	WALLS				NOTES
				N	S	E	W	
100	CORRIDOR	PT-1A	PT-1B	VWC-1	VWC-1	VWC-1	VWC-1	
101	BREAK ROOM	PT-1A	PT-1B	VWC-2	VWC-1	VWC-1	VWC-1	
102	STOR	PT-1A	PT-1B	P-1	P-1	P-1	P-1	
103	W.H.	PT-1A	PT-1B	P-1	P-1	P-1	P-1	
104	I.T.	PT-1A	PT-1B	P-1	P-1	P-1	P-1	
105	LOCKER	PT-1A	PT-1B	VWC-1	VWC-1	VWC-2	VWC-2	
106	TOILET ROOM	PT-1A	PT-1B	VWC-1	VWC-1	VWC-1	VWC-2	
107	OFFICE	PT-1A	PT-1B	P-1	P-1	P-2	P-1	
108	STOR	PT-1A	PT-1B	P-1	P-1	P-1	P-1	
109	VESTIBULE	PT-1A	PT-1B	P-1	P-1			



1 FIRST FLOOR FINISH PLAN
3/16" = 1'-0"



ARCHITECTURE
INTERIOR DESIGN
PLANNING



Ecomaine - Renovation of Office/Break Area
64 Blueberry Road, Portland, ME 04102

TITLE
ROOM FINISH SCHEDULE, DETAILS

JOB # 12122
DATE 05/06/13
SCALE 3/16" = 1'-0"

SHEET
A602

49 DARTMOUTH STREET
PORTLAND, MAINE 04101
www.pdtarchts.com

Checker

C:\Users\Rasmussen\Documents\Ecomaine_Central_Rasmussen.rvt