

- GENERAL NOTES**
1. CONTRACTOR SHALL WORK FROM GIVEN DIMENSIONS AND LARGE SCALE DETAILS ONLY. DO NOT SCALE THE DRAWINGS.
 2. THE BUILDING SHALL BE CONSTRUCTED TO CONFORM WITH ALL APPLICABLE CODES INCLUDING, BUT NOT LIMITED TO, 2003 INTERNATIONAL BUILDING CODE AND THE 2000 EDITION OF NFPA 101.
 3. ALL WOOD IN CONTACT WITH CONCRETE SHALL BE PRESSURE PRESERVATIVE TREATED.
 4. GENERAL CONTRACTOR SHALL VERIFY ALL EXISTING CONDITIONS & DIMENSIONS PRIOR TO CONSTRUCTION AND REPORT ANY DISCREPANCIES TO THE OWNER. GENERAL CONTRACTOR SHALL PROCEED WITH THE WORK ONLY AFTER DISCREPANCY HAS BEEN RESOLVED BY THE OWNER.
 5. CAULKING AROUND WINDOWS SHALL BE NONHARDENING TYPE SEALANT.
 6. THIS PROJECT SHALL NOT CONTAIN HAZARDOUS MATERIALS OF ANY KIND, IN ANY PRODUCT, OF ANY KIND, I.E. ASBESTOS.
 7. INSTALL BLOCKING BEHIND ALL SURFACE APPLIED FIXTURES, AND GRAB BARS WHEN MOUNTED ON STUD WALLS.
 8. ALL DOOR HARDWARE TO BE ACCESSIBLE. E.G. LEVER HANDLES. MAX. FULL PRESSURE EXTERIOR DOORS 6LBS. MAX. FULL PRESSURE INTERIOR DOORS 5LBS.
 9. ALL DOORS TO BE 36" UNLESS NOTED OTHERWISE. MIN. CLEAR DOOR OPENING WIDTH 32", UNLESS NOTED OTHERWISE.
 10. FOR ALL STRUCTURAL DESIGN DETAILS AND REQUIREMENTS REFER TO PLAN PREPARED BY VARCO PRUDEN BUILDINGS.
 11. SMOKE DETECTOR AND EMERGENCY LIGHTING SYSTEM TO BE INSTALLED PER PLAN AND DESIGNED BY CONTRACTOR IN ACCORDANCE WITH ALL APPLICABLE CODES AND REGULATIONS.

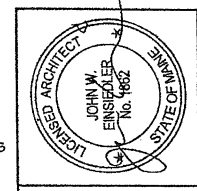
LEGEND

	FULL HEIGHT WALL - FULL HEIGHT G.W.B. KENNEL SIDE ONLY
	HALF WALL: 4'-0" A.F.F.
	EMERGENCY LIGHT
	K.H.S. HORN/STROBE
	EXIT SIGN
	PULL STATION
	FIRE EXTINGUISHER

FLOOR PLAN
SCALE 1/8" = 1'-0"



DATE	
DESCRIPTION	
BY	



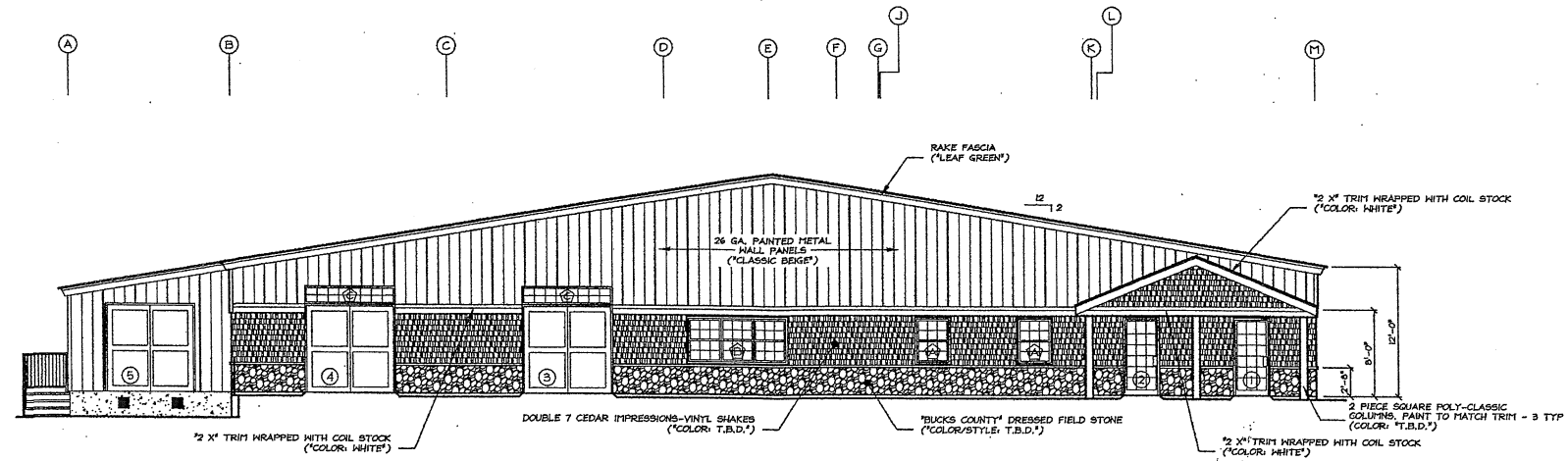
John W. Einsiedler, R.A.
Architect
146 Sea Road
Sambrook, Maine 04083
TEL: (207) 924-5574 FAX: (207) 924-1643
www.patco-construction.com
Architect • Interior Designer • Universal Design

PATCO CONSTRUCTION INC
1293 MAIN STREET SANFORD, ME 04073
TEL: (207) 924-5574 FAX: (207) 924-1643
www.patco-construction.com
Copyright © 2007 Patco Construction, Inc. All Rights Reserved.

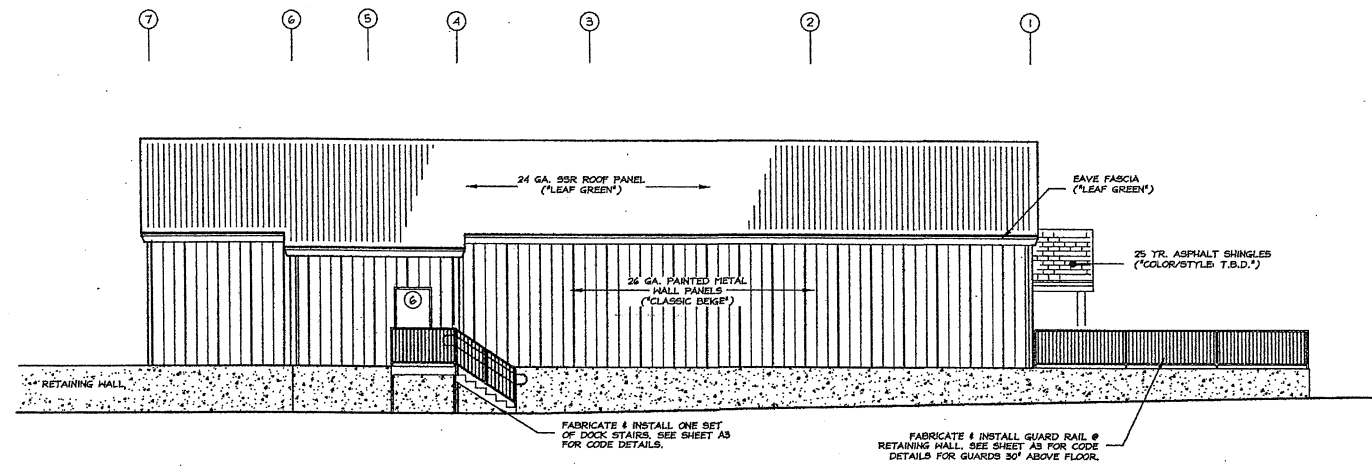
PROPOSED BUILDING FOR:
CAMP BOW WOW
49 BLUEBERRY ROAD
PORTLAND, MAINE
FLOOR PLAN

DATE: AUG 14, 2007
SCALE: AS SHOWN
DRAWN BY: JDB/JLG
CHECKED BY:
JOB NUMBER: 2730
SHEET:

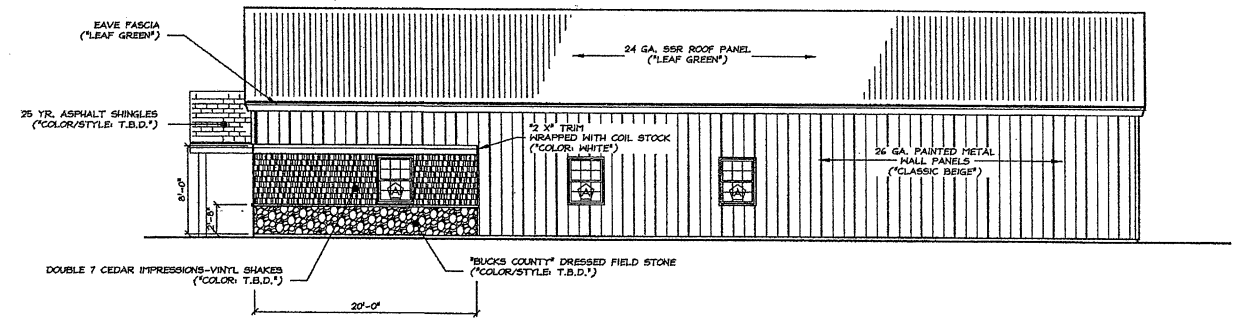
A1



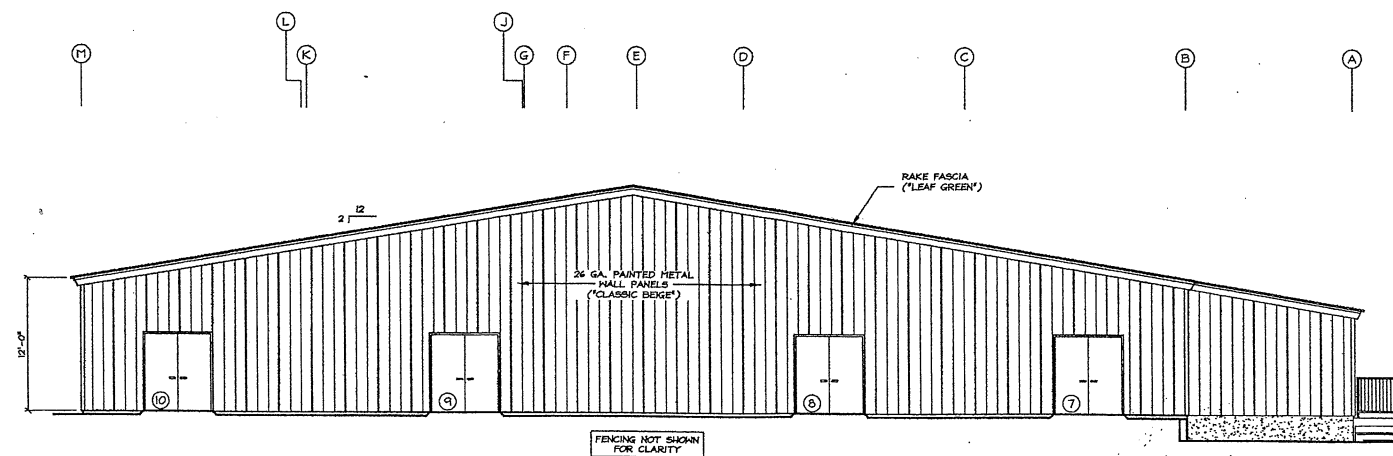
WEST ELEVATION
SCALE 1/8" = 1'-0"



NORTH ELEVATION
SCALE 1/8" = 1'-0"

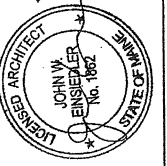


SOUTH ELEVATION
SCALE 1/8" = 1'-0"



WEST ELEVATION
SCALE 1/8" = 1'-0"

REV.	DATE	DESCRIPTION



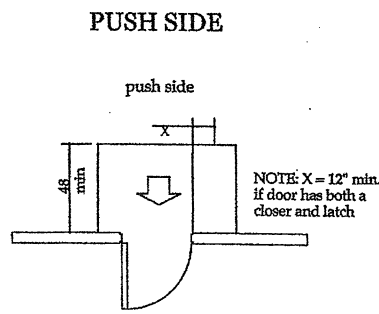
John W. Einsiedler, R.A.
ARCHITECTURE
148 Sea Road
Kennebunk, Maine 04043
Phone: 207-985-9700 Fax: 207-985-9818
www.jweinsiedler.com
Architect - Interior Design - Landmark Design

PATCO
CONSTRUCTION INC
1295 MAIN STREET SANFORD, ME 04073
TEL: (207) 324-5574 FAX: (207) 324-1643
www.patco-construction.com
Copyright © 1995 Patco Construction, Inc. All Rights Reserved.

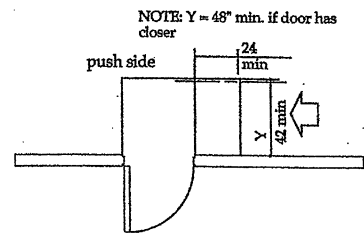
PROPOSED BUILDING FOR:
CAMP BOW NOW
49 BLUEBERRY ROAD
PORTLAND, MAINE
ELEVATIONS

DATE	AUG 14, 2007
SCALE	AS SHOWN
DRAWN BY:	JDB/JLG
CHECKED BY:	
JOB NUMBER:	2730
SHEET	

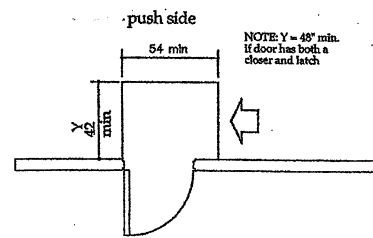
A2



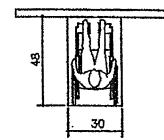
Front Approach - Swinging Door



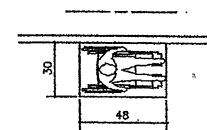
Latch Side Approach Swinging Door



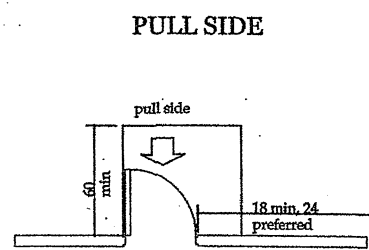
Side Approach - Swinging Door



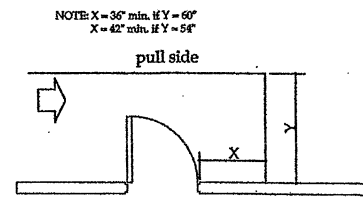
Forward Approach



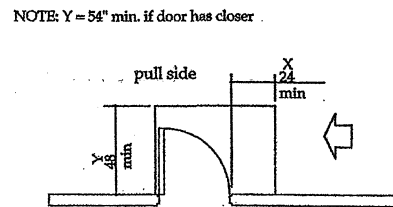
Parallel Approach



Front Approach - Swinging Door



Hinge Side Approach - Swinging Door

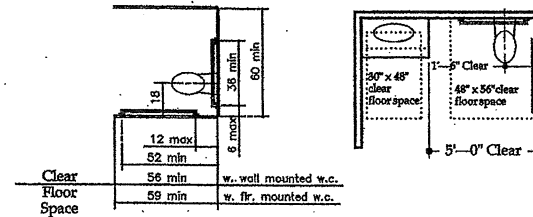


Latch Side Approach Swinging Door

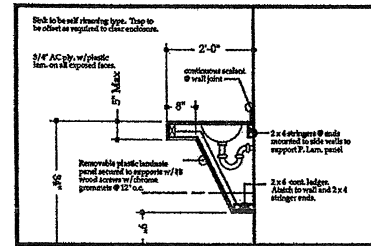
Fig. 4(b) Forward Approach Minimum Clear Floor Space for Wheelchairs

4.2 Space Allowance and Reach Ranges.
4.2.4 Clear Floor or Ground Space for Wheelchairs
4.2.4.1 Size and Approach. The minimum clear floor or ground space required to accommodate a single, stationary wheelchair and occupant is 30 in by 48 in (760 mm by 1220 mm) (see Fig. 4(a)). The minimum clear floor or ground space for wheelchairs may be positioned for forward or parallel approach to an object (see Fig. 4(b) and (c)). Clear floor or ground space for wheelchairs may be part of the knee space required under some objects.

p15 35621 Federal Register/
Vol. 56, No. 144/
Friday, July 26 1991/
Rules and Regulations



Standard Stall Grab Bars and Minimum Clear Floor Space



Accessible Sink Detail - Alternate Wall Hung
Scale: 1/2" = 1'-0"

4.30.1* General. Signage required to be accessible by 4.1 shall comply with the applicable provisions of 4.30.

4.30.2* Character Proportion. Letters and numbers on signs shall have a width to height ratio between 3:5 and 1:1 and a stroke width to height ratio between 1:5 and 1:10.

4.30.3 Character Height. Characters and numbers on signs shall be sized according to the viewing distance from which they are to be read. The minimum height is measured using an upper case X. Lower case characters are permitted.

Height Above Finished Floor
Minimum Character Height Suspended or Projected Overhead in compliance with 4.4.2
3 in (75 mm) minimum

4.30.4 Raised and Brailled Characters and Pictorial Symbol Signs (Pictograms). Letters and numerals shall be raised 1/32 in (0.79 mm) minimum, upper case, sans serif or simple serif type and shall be accompanied with Grade 2 Braille. Raised characters shall be at least 5/8 in (16 mm) high, but no higher than 2 in (50 mm). Pictograms shall be accompanied by the equivalent verbal description placed directly below the pictogram. The border dimension of the pictogram shall be 6 in (152 mm) minimum in height.

4.30.5* Finish and Contrast. The characters and background of signs shall be eggshell, matte, or other nonglare finish. Characters and symbols shall contrast with their background either light characters on a dark background or dark characters on a light background.

4.30.6 Mounting Location and Height. Where permanent identification is provided for rooms and spaces, signs shall be installed on the wall adjacent to the latch side of the door. Where there is no wall space to the latch side of the door, including at double leaf doors, signs shall be placed on the nearest adjacent wall. Mounting height shall be 60 in (1525 mm) above the finish floor to the centerline of the sign. Mounting location for such signage shall be so that a person may approach within 3 in (76 mm) of signage without encountering protruding objects or standing within the swing of a door.

4.30.7* Symbols of Accessibility.

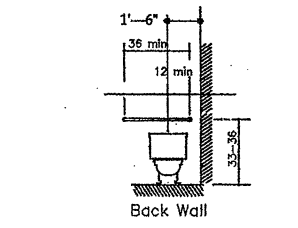
(1) Facilities and elements required to be identified as accessible by 4.1 shall use the international symbol of accessibility. The symbol shall be displayed as shown in Fig. 43(a) and (b).



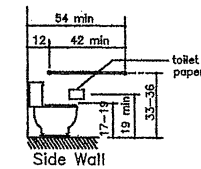
(a) International Symbol of Accessibility



(b) Display Conditions International Symbol of Accessibility



Grab Bars and Water Closets



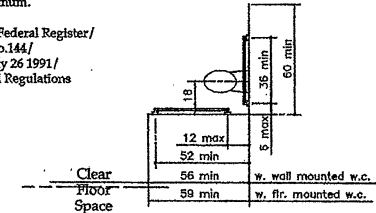
Grab Bars and Water Closets

Fig. 29(a) Back Wall Grab Bars at Water Closets

4.16 Water Closets.
4.16.3* Height. The height of water closets shall be 17 in to 19 in (430 mm to 485 mm), measured to the top of the toilet seat (see Fig. 29(b)). Seats shall not be sprung to return to a lift position.

4.16.4 Grab Bars. Grab bars for water closets not located in stalls shall comply with 4.26 and Fig. 29. The grab bar behind the water closet shall be 36 in (915 mm) minimum.

p40 35646 Federal Register/
Vol. 56, No. 144/
Friday, July 26 1991/
Rules and Regulations



Standard Grab Bars and Minimum Clear Floor Space

ALARM REQUIREMENTS

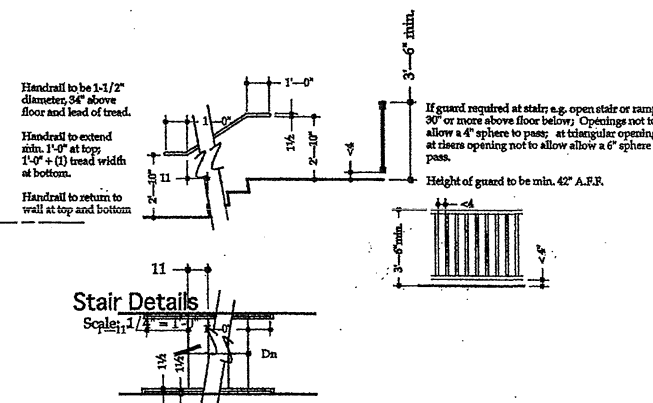
4.28 Alarms.

4.28.1 General. Alarm systems required to be accessible by 4.1 shall comply with 4.28. At a minimum, visual signal appliances shall be provided in buildings and facilities in each of the following areas: restrooms and any other general usage areas (e.g., meeting rooms, hallways, lobbies, and any other area for common use).

4.28.2* Audible Alarms. Audible emergency alarms shall produce a sound that exceeds the prevailing equivalent sound level in the room or space by at least 15 dBA or exceeds any maximum sound level with a duration of 60 seconds by 5 dbA, whichever is louder. Sound levels for alarm signals shall not exceed 120 dbA.

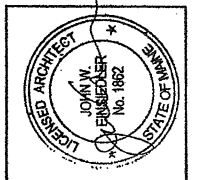
4.28.3* Visual Alarms. Visual alarm signal appliances shall be integrated into the building or facility alarm system. If single station audible alarms are provided then single station visual alarm signals shall be provided. Visual alarm signals shall have the following minimum photometric and location features:

- (1) The lamp shall be a xenon strobe type or equivalent.
- (2) The color shall be clear or nominal white (i.e., unfiltered or clear filtered white light).
- (3) The maximum pulse duration shall be two tenths of one second (0.2 sec) with a maximum duty cycle of 40 percent. The pulse duration is defined as the time interval between initial and final points of 10 percent of maximum signal.
- (4) The intensity shall be a minimum of 75 candela.
- (5) The flash rate shall be a minimum of 1 Hz and a maximum of 3 Hz.
- (6) The appliance shall be placed 80 in (2030 mm) above the highest floor level within the space or 6 in (152 mm) below the ceiling, whichever is lower.
- (7) In general, no place in any room or space required to have a visual signal appliance shall be more than 50 ft (15 m) from the signal (in the horizontal plane). In large rooms and spaces exceeding 100 ft (30 m) across, without obstructions 6 ft (2 m) above the finish floor, such as multilevels, devices may be placed around the perimeter, spaced a maximum 100 ft (30 m) apart, in lieu of suspending appliances from the ceiling.
- (8) No place in common corridors or hallways in which visual alarm signalling appliances are required shall be more than 50 ft (15 m) from the signal.



Stair Details
Scale: 1/4" = 1'-0"

REV.	DATE	DESCRIPTION



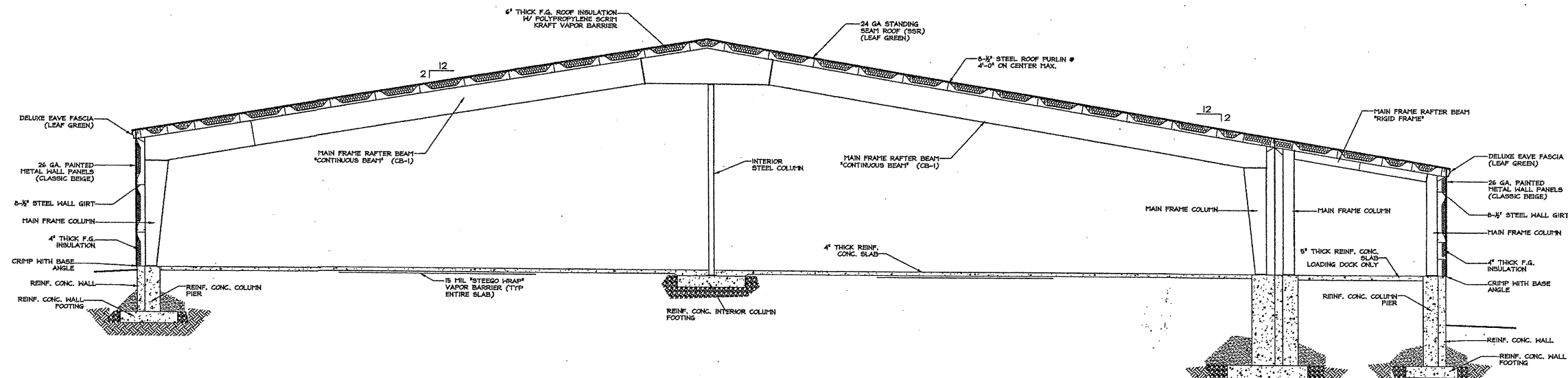
John W. Elmsfelder, R.A.
ARCHITECT
148 Sea Road
Kennebunk, Maine 04043
Phone: (207) 234-5574
FAX: (207) 234-5574
Architectural - Interior Design - Universal Design

PATCO
CONSTRUCTION INC
1295 MAIN STREET SAUFORD, ME 04073
TEL: (207) 234-5574 FAX: (207) 234-1643
www.patco-construction.com

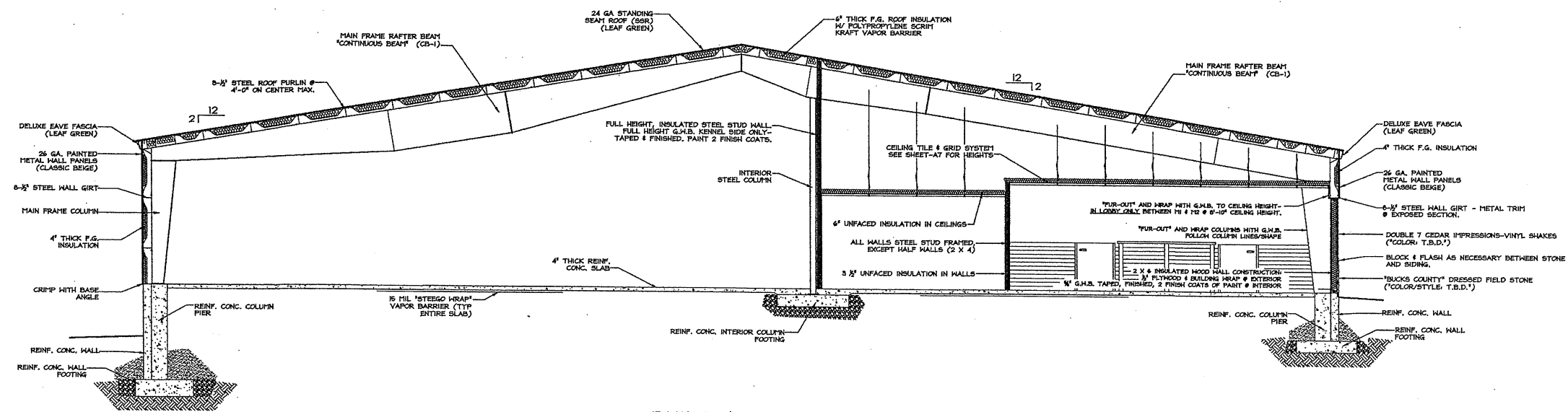
PROPOSED BUILDING FOR:
CAMP BOW NOW
49 BLUEBERRY ROAD
PORTLAND, MAINE
ADA DETAILS

DATE	AUG 14, 2007
SCALE	AS SHOWN
DRAWN BY	JE
CHECKED BY	
JOB NUMBER	2730
HEET	

A3

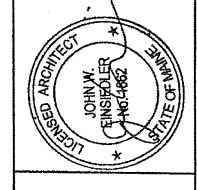


BUILDING SECTION A-A
SCALE: 3/16" = 1'-0"



BUILDING SECTION A-A
SCALE: 3/16" = 1'-0"

DATE	
DESCRIPTION	
REV.	



John W. Einstedler, R.A.
Architect
148 Oak Road
Kennebunk, Maine 04043
Phone 207-865-9700 Fax 207-865-9812
http://www.jweinstedler.com
Architect - Interior Design - Structural Design

PATCO
CONSTRUCTION INC
1293 MAIN STREET SANFORD, ME 04073
TEL: (207) 324-5774 FAX: (207) 324-1643
www.patco-construction.com
Copyright © 2004 Patco Construction, Inc. All Rights Reserved.

PROPOSED BUILDING FOR:
CAMP BOW WOW
49 BLUEBERRY ROAD
PORTLAND, MAINE
BUILDING SECTIONS

DATE	SEP11, 2007
SCALE	AS SHOWN
DRAWN BY	JLG
CHECKED BY	
JOB NUMBER	2730
SHEET	

A4

DOOR SCHEDULE

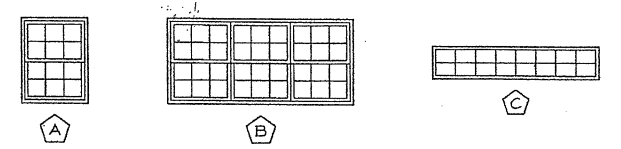
NO.	SIZE	ROUGH OPENING	LOCATION	TYPE	MAT	GLASS	JAMB	JAMB SIZE	SWING	FRAME	HARDWARE	COMMENTS
1	3'-0" X 7'-0"	40 1/2" X 86 1/4"	101	A-1	AL/GL	FULL	A				T, CL, LS	CLASS II SAFETY GLAZING
2	3'-0" X 7'-0"	40 1/2" X 86 1/4"	102	A-1	AL/GL	FULL	A				T, CL, LS	CLASS II SAFETY GLAZING
3	8'-0" X 8'-0"	96" X 96"	119	O-1	OHD							MANUAL OPERATION, TRANSOM WINDOW ABOVE
4	8'-0" X 8'-0"	96" X 96"	119	O-1	OHD							MANUAL OPERATION, TRANSOM WINDOW ABOVE
5	8'-0" X 8'-0"	BY V.P.	120	O-1	OHD							MANUAL OPERATION, BUMPERS
6	3'-0" X 7'-0"	40 1/2" X 86 1/4"	120	S-1	M		M			P & D	T, CL, LS	
7	6'-0" X 7'-0"	76 1/2" X 86 1/4"	119	S-2	M		M		DB	P & D	T, CL, LS	
8	6'-0" X 7'-0"	76 1/2" X 86 1/4"	119	S-2	M		M		DB	P & D	T, CL, LS	
9	6'-0" X 7'-0"	76 1/2" X 86 1/4"	119	S-2	M		M		DB	P & D	T, CL, LS	
10	6'-0" X 7'-0"	76 1/2" X 86 1/4"	119	S-2	M		M		DB	P & D	T, CL, LS	
11	3'-0" X 7'-0"	38" X 85"	101	B-4	B	HG	M	4 7/8"	RH	K/D	PS	
12	3'-0" X 7'-0"	38" X 85"	102	B-4	B	HG	M	4 7/8"	RH	K/D	PS	
13	3'-0" X 7'-0"	38" X 85"	103	B-3	B		M	4 7/8"	LH	K/D	PS	DUTCH DOOR
14	3'-0" X 7'-0"	38" X 85"	104	B-4	B	HG	M	4 7/8"	LH	K/D	PS	
15	3'-0" X 7'-0"	38" X 85"	119	B-3	B		M	4 7/8"	LH	K/D	PS	DUTCH DOOR
16	3'-0" X 7'-0"	38" X 85"	107	B-1	B		M	4 7/8"	RH	K/D	PRS	
17	3'-0" X 7'-0"	38" X 85"	106	B-1	B		M	4 7/8"	LH	K/D	PRS	
18	3'-0" X 7'-0"	38" X 85"	108	B-1	B		M	4 7/8"	LH	K/D	PS	DOUBLE DOOR
19	3'-0" X 7'-0"	38" X 85"	112	B-3	B		M	4 7/8"	LH	K/D	PS	DUTCH DOOR
20	3'-0" X 7'-0"	38" X 85"	116	B-4	B	HG	M	4 7/8"	RH	K/D	PS	
21	4'-0" X 7'-0"	50" X 85"	117	B-5	B		M	4 7/8"		K/D		
22	3'-0" X 7'-0"	38" X 85"	112	B-1	B		M	4 7/8"	LH	K/D	PS	
23	3'-0" X 4'-0"	40 1/2"	111	B-2	B		M	4 7/8"	RH	P & D	PS	HALF FRAME - PUNCH & DIMPLED
24	3'-0" X 4'-0"	40 1/2"	111	B-2	B		M	4 7/8"	RH	P & D	PS	HALF FRAME - PUNCH & DIMPLED
25	3'-0" X 4'-0"	40 1/2"	111	B-2	B		M	4 7/8"	RH	P & D	PS	HALF FRAME - PUNCH & DIMPLED
26	3'-0" X 7'-0"	38" X 85"	115	B-1	B		M	4 7/8"	LH	K/D	PS	
27	3'-0" X 7'-0"	38" X 85"	119	B-4	B	HG	M	4 7/8"	LH	K/D	PS	
28	3'-0" X 7'-0"	38" X 85"	114	B-1	B		M	4 7/8"	LH	K/D	PS	
29	3'-0" X 4'-0"	40 1/2"	109	B-2	B		M	4 7/8"	LH	P & D	PS	HALF FRAME - PUNCH & DIMPLED
30	3'-0" X 4'-0"	40 1/2"	109	B-2	B		M	4 7/8"	LH	P & D	PS	HALF FRAME - PUNCH & DIMPLED
31	3'-0" X 4'-0"	40 1/2"	113	B-2	B		M	4 7/8"	LH	P & D	PS	HALF FRAME - PUNCH & DIMPLED
32	3'-0" X 7'-0"	38" X 85"	113	B-1	B		M	4 7/8"	RH	K/D	PS	
33	3'-0" X 7'-0"	38" X 85"	120	S-1	M		M	4 7/8"	RH	K/D	T, LS	

A = ALUMINUM AL/GL = ALUMINUM/GLASS LH = LEFT HAND RH = RIGHT HAND PS = PASSAGE SET T = THRESHOLD
 B = BIRCH HG = HALF GLASS DB = DOUBLE DOOR PRS = PRIVACY SET CL = CLOSURE
 G = GLASS MD = MILD OHD = OVERHEAD DOOR K/D = KNOCK DOWN LS = LOCK SET
 M = METAL W = WELDED P & D = PUNCH & DIMPLED

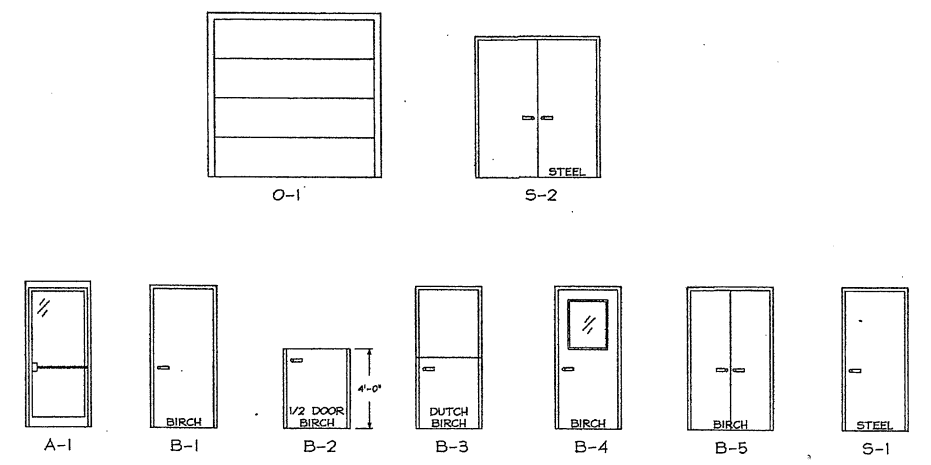
WINDOW SCHEDULE

WINDOW	QTY.	SIZE	R.O.	DESCRIPTION	FRAME	GLASS	NOTES
A	5	3'-0" X 4'-0"	3'-0" X 4'-0"	SINGLE HUNG	VINYL	INSUL.	SHATTERPROOF WITH TEMPERED GLASS
B	1	(3) 3'-0" X 4'-0"	8'-11" X 4'-0"	SINGLE HUNG	VINYL	INSUL.	ONE WAY FROSTED SHATTERPROOF WITH TEMPERED GLASS
C	2	8'-0" X 1'-6"	8'-0" X 1'-6"	FIXED/TRANSOM	VINYL	INSUL.	SHATTERPROOF WITH TEMPERED GLASS

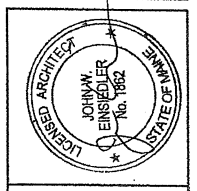
WINDOW TYPES



DOOR TYPES



NO.	
DATE	
DESCRIPTION	
BY:	



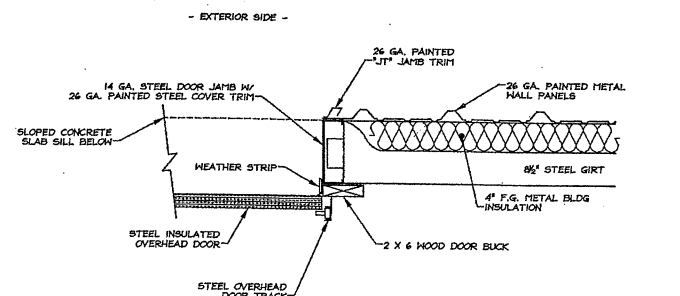
John W. Einsiedler, R.A.
ARCHITECTURE
 148 So. Road, Scarborough, Maine 04083
 Phone: 207-969-9790, Fax: 207-969-9791
 Architects • Interior Design • Contract Design

PATCO
CONSTRUCTION INC.
 1293 MAIN STREET SANFORD, ME 04073
 TEL: (207) 324-5574 FAX: (207) 324-1643
 www.patco-construction.com

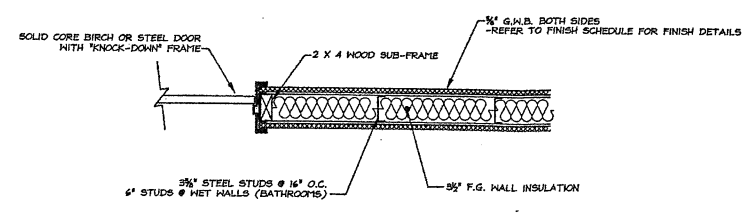
PROPOSED BUILDING FOR:
CAMP BOW WOW
 49 BLUEBERRY ROAD
 PORTLAND, MAINE
DOOR & WINDOW SCHEDULE

DATE:	SEP12, 2007
SCALE:	AS SHOWN
DESIGN BY:	JDB
CHECKED BY:	
JOB NUMBER:	2730
SHEET:	

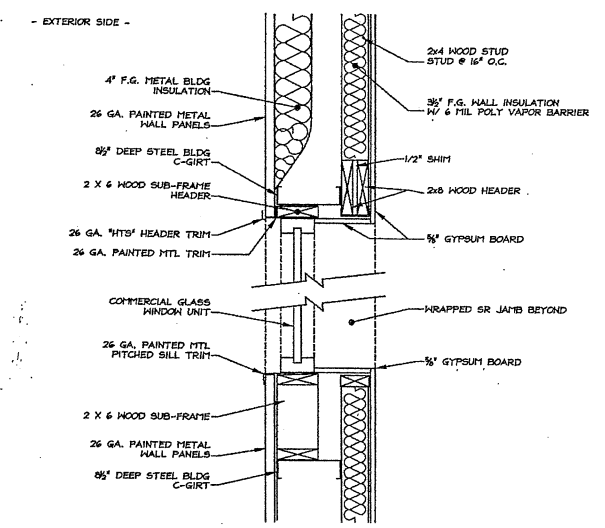
A5



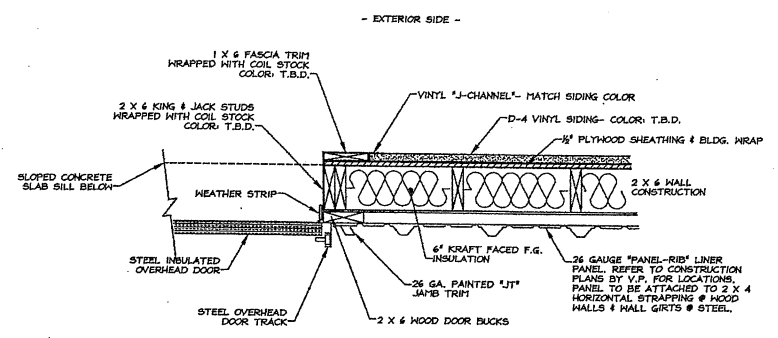
1 OVERHEAD DOOR JAMB @ STEEL WALL
SCALE: 1" = 1'-0"



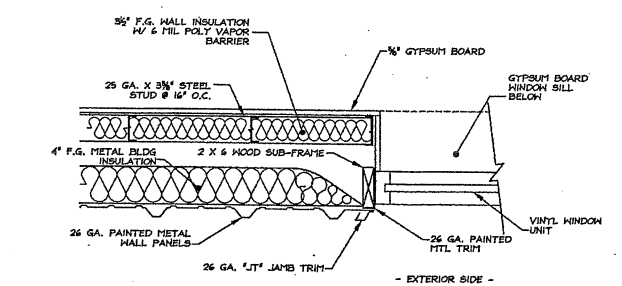
5 INTERIOR DOOR JAMB
SCALE: 1" = 1'-0"



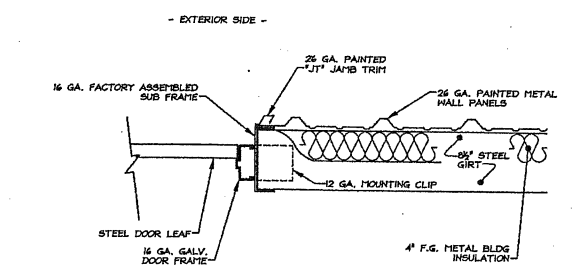
8 STEEL WALL WINDOW HEADER/SILL
SCALE: 1" = 1'-0"



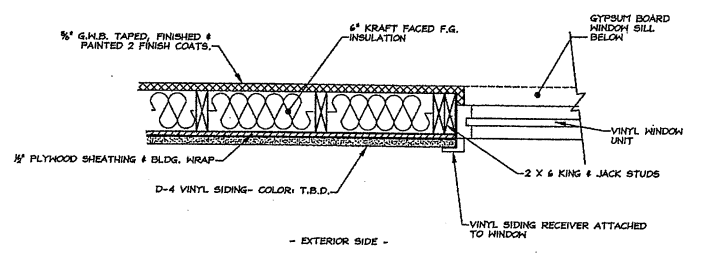
2 OVERHEAD DOOR JAMB @ WOOD WALL
SCALE: 1" = 1'-0"



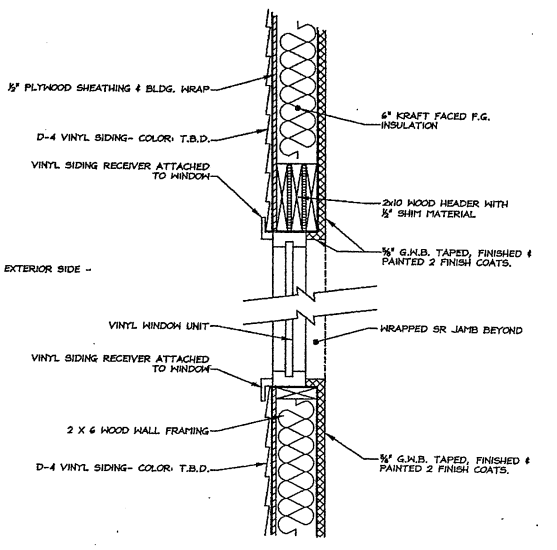
6 STEEL WALL WINDOW JAMB
SCALE: 1" = 1'-0"



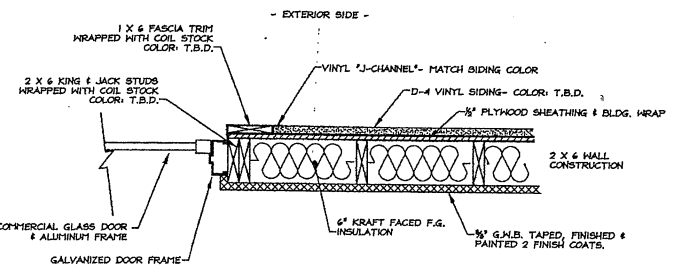
3 EXTERIOR DOOR JAMB @ STEEL WALL
SCALE: 1" = 1'-0"



7 WOOD WALL WINDOW JAMB
SCALE: 1" = 1'-0"

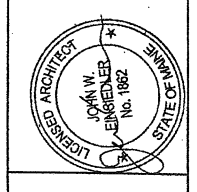


9 WOOD WALL WINDOW HEADER/SILL
SCALE: 1" = 1'-0"



4 EXT. AL/GL JAMB @ WOOD WALL
SCALE: 1" = 1'-0"

DATE	BY



John W. Einsiedler, R.A.
ARCHITECTURE
148 San Road Kennebunk, Maine 04048
Phone 207-465-9700 Fax 207-465-9701
www.patco-construction.com
Architect • Interior Design • Structural Design

PATCO
CONSTRUCTION INC
1295 MAIN STREET SANFORD, ME 04073
TEL: (207)324-5574 FAX: (207)324-1643
www.patco-construction.com
operates in 14 states throughout the US. All rights reserved.

PROPOSED BUILDING FOR:
CAMP BOW NOW
49 BLUEBERRY ROAD
PORTLAND, MAINE
DOOR/WINDOW DETAILS

DATE:	SEP12, 2007
SCALE:	AS SHOWN
DRAWN BY:	JLG
CHECKED BY:	
JOB NUMBER:	2730
SHEET:	

A6