

FOUNDATION PLAN AND DETAILS

CAMP BOW WOW
 PORTLAND, MAINE
 FOR
PATCO CONSTRUCTION
 SANFORD, MAINE

SHEET 51 OF 2
 DATE: 08.10.2007
 SCALE: AS NOTED

PROJECT NO.	FOR	SRG
DESIGN	CHKD	SRG
DRWN	SRG	SRG
07-083	SRG	SRG

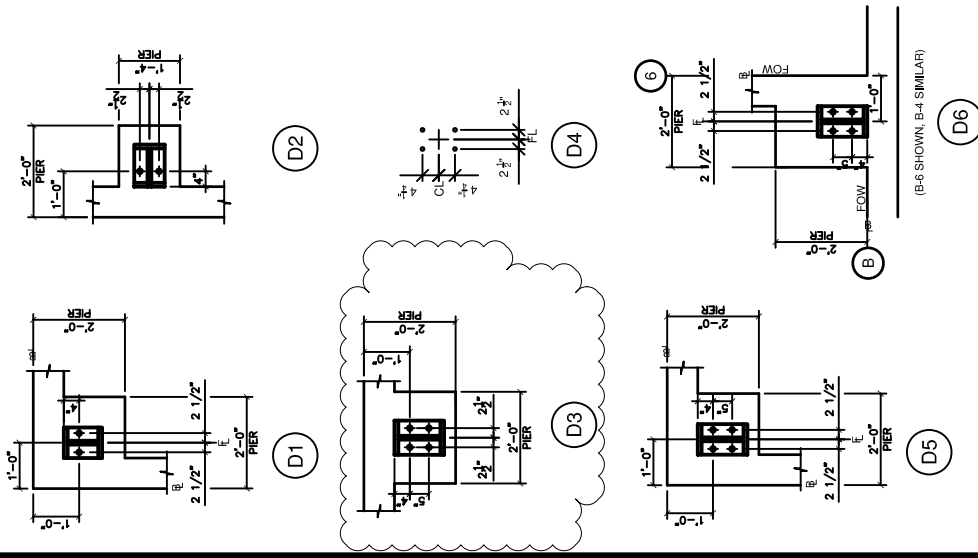
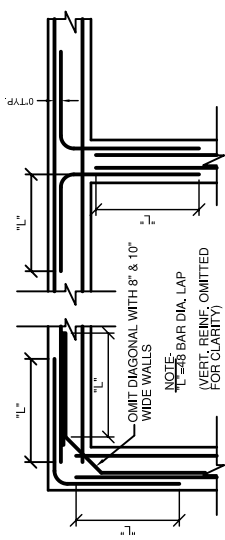
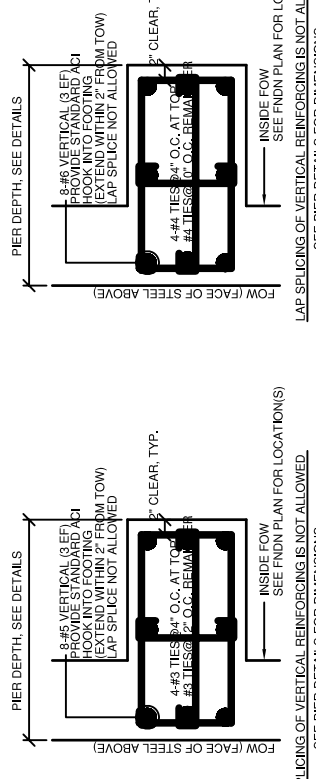
ENGINEERING, INC.
 P.O. BOX 925
 GRAY, ME 04039
 TEL: (207) 657-7323
 FAX: (207) 657-7342
 EMAIL: SRG@SRGENGINEERING.COM

REV.	BY:	DATE:	STATUS:
1	SRG	9-11-07	BOF AT GRID M-5
1	SRG	11-13-07	PIER AND FOOTINGS AT B-2, B-3, B-5 REVISED DUE TO UPDATED VP REACTIONS FROM SW COLE SITE CLASS E SOILS IN 9-10-07 REPORT.

THIS PLAN SHALL NOT BE MOVED WITHOUT WRITTEN PERMISSION FROM SRG ENGINEERING, INC. ANY ALTERATIONS AUTHORIZED OR OTHERWISE, SHALL BE AT THE USER'S SOLE RISK AND WITHOUT LIABILITY TO SRG ENGINEERING, INC.

RE-ISSUED FOR CONSTRUCTION

SYMBOL	SIZE (L X TH X W)	REINF. RECD	COMMENTS
F4	4'-0" x 1'-0" x 4'-0"	6 - #4 EW.	BOTTOM REINF.
F5	5'-0" x 1'-0" x 5'-0"	7 - #4 EW.	TOP & BOTTOM REINF.
F6	6'-0" x 1'-2" x 6'-0"	7 - #5 EW.	TOP & BOTTOM REINF.
F7	7'-6" x 1'-6" x 7'-6"	7 - #6 EW.	TOP & BOTTOM REINF.

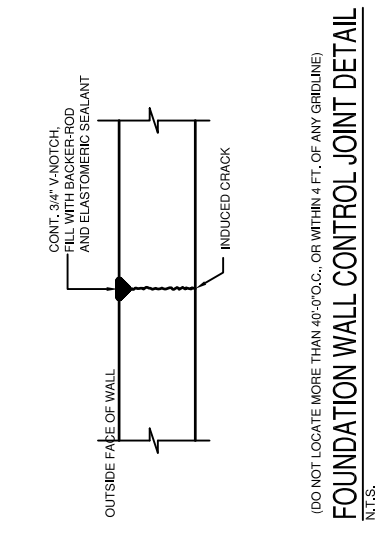
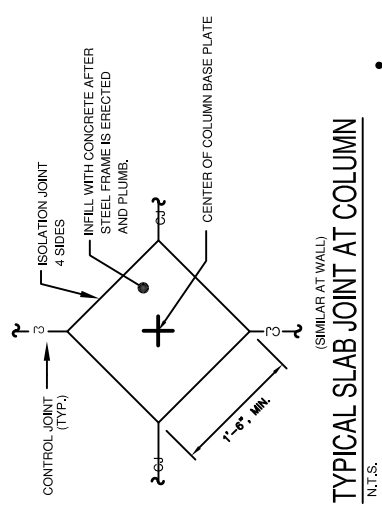


CONTRACTOR NOTE:
 CONTRACTOR TO CONFIRM PIER SIZE/ LOCATIONS, AND TOP OF CONCRETE ELEVATIONS WITH FINAL "VARCO PRUDENT" (VP) BUILDING PLANS.

DIAMETER	SHAPE	LOCATION
3/4" ASTM A307	W/FLAT	ANCHOR BOLTS
1/2" DIA.	NUT	ANCHOR BOLTS

ANCHOR BOLT NOTES:
 1. CONTRACTOR TO CONFIRM ANCHOR ROD LAYOUT WITH METAL BUILDING MANUF. PRIOR TO SETTING ANCHOR.
 2. ANCHOR RODS TO MEET ASTM F1554 SPECIFICATION.
 3. EMBEDMENT SHOWN IS MIN. TO TOP OF NUT.
 4. SEE ANCHOR PLANS FOR 1/2" DIA. BOLT RODS AT FRAMED PIER DETAILS.

PIER DETAILS
 N.T.S.
 (ALL ANCHOR RODS TO BE 3/4" DIAMETER, UNLESS NOTED OTHERWISE)



****CONTRACTOR NOTE:**
 ALL COLUMN PIERS ARE DESIGNED FOR HORIZONTAL THRUST BY COLUMN. AS A RESULT, ELEVATION BOTTOM OF FOOTING LOWER THAN INDICATED IS NOT ACCEPTABLE. CONTACT SRG ENGINEERING SO ALL FOUNDATIONS CAN BE REDESIGNED SHOULD ELEVATION BOTTOM OF FOOTING(S) NEED TO BE LOWER.



FOUNDATION NOTES:

- DESIGN MAXIMUM ASSUMED SOIL BEARING PRESSURE=3,000 PSF. PER S.W.COLE ENG., INC. REPORT DATED SEPTEMBER 10, 2007.
- CONCRETE, WALLS & FOOTINGS: Fc=3,000 P.S.I., 3/4" AGGREGATE, MAX. W/C=0.50, TYPE I OR II CEMENT; 4 TO 6% ENT. AIR, SLUMP MIN. 1", MAX. 4". EXTERIOR SLAB: Fc=3,000 P.S.I., 3/4" AGGREGATE, MAX. W/C=0.48, NO ENTRAINED AIR, TYPE I OR II CEMENT, SLUMP MIN. 1", MAX. 3". INTERIOR SLABS: Fc=4,500 P.S.I., 3/4" AGGREGATE, MAX. W/C=0.40, 4%-6% ENTRAINED AIR, TYPE I OR II CEMENT, SLUMP MIN. 1", MAX. 3". (USE A MID-RANGE WATER REDUCER IF MORE WORKABILITY IS DESIRED.)
- CONCRETE SUPPLIER IS TO SUBMIT MIX DESIGNS TO ENGINEER OF RECORD FOR EACH TYPE OF CONCRETE TO BE USED. REINFORCING TO BE GRADE 60, NEW DEFORMED BARS. DO NOT "WET-STICK" REBAR OR ANCHOR BOLTS. NO EXCEPTION.
- ALL FOUNDATION WALLS ARE 8" WIDE, UNLESS NOTED OTHERWISE ON PLANS.
- UNLESS NOTED ON PIER DETAILS, ALL ANCHOR RODS ARE 3/4" DIA. ASTM F1554 A38 THREADED ROD WITH NUT EACH END. SEE DETAILS.
- ALL FRAME AND WALK DOOR OPENINGS TO BE FIELD LOCATED.
- G.C. TO VERIFY AND COORDINATE ALL LOCATIONS OF OVERHEAD DOORS (OHD), PEOPLE DOORS, AND LOADING DOORS.
- REF. ELEV. TOP OF FOUNDATION WALL = 100.0 FT. TYP. UNLESS NOTED OTHERWISE THUS "TOW"-.
- REF. ELEV. TOP OF PIER = 100.0 FT. TYP. UNLESS NOTED OTHERWISE THUS "TOP"-.
- REFERENCE BOTTOM OF WALL FOOTING ELEVATION = 95.17 FT. TYPICAL U.N.O. THUS "BOF"-.
- ALL EXTERIOR FOOTINGS SHALL EXTEND 4'-6" BELOW FINISH GRADE (SEE NOTE THIS SHEET). UNLESS SPECIFIED DIFFERENTLY BY PROJECT GEOTECHNICAL ENGINEER.
- ALL FOOTINGS TO BE CENTERED BELOW COLUMN BASE ABOVE.
- SEE "VP" PLANS FOR ANCHOR ROD LOCATION, ORIENTATION, AND SIZE.
- REFER TO JULY 3, 2003 S.W. COLE ENGINEERING, INC. GEOTECHNICAL ENGINEERING REPORT FOR ALL FOUNDATION, DRAINAGE, COMPACTION, BACKFILL, AND SUB-GRADE PREPARATION REQUIREMENTS.
- G.C. TO DETERMINE SLAB PITCH REQUIREMENTS AND FIELD COORDINATE.
- ALL STRUCTURAL FILL TO BE COMPACTED TO A MINIMUM OF 95% AS DETERMINED BY ASTM D-1557. UNO BY PROJECT GEOTECHNICAL ENGINEER.
- CONTRACTOR TO COMPLY WITH LATEST PROVISIONS OF ACI 305 AND ACI 306 FOR HOT AND COLD WEATHER CONCRETING.
- CONTRACTOR TO SUBMIT DETAILED REINFORCING SHOP DRAWINGS TO SRG FOR REVIEW PRIOR TO CONSTRUCTION. NO EXCEPTION.
- CALCIUM CHLORIDE IS NOT ALLOWED IN ANY CONCRETE AND WILL BE REJECTED IF IT IS ALLOWED IN CONCRETE MIX.
- EACH CONCRETE TRUCK TO PROVIDE BATCH TICKET TO MATERIALS TESTING AGENCY BEFORE PLACEMENT. NO EXCEPTIONS.
- PROVIDE SUPPORTS FOR REINFORCEMENT INCLUDING BOLTERS, CHAIRS, SPACERS, AND OTHER DEVICES FOR SPACING. ALL REINFORCEMENT SHALL BE PLACED ACCORDING TO THE REINFORCING SHOP DRAWINGS AND SHALL COMPLY WITH CRSI RECOMMENDATIONS. UNLESS OTHERWISE ACCEPTABLE TO ENGINEER, "WET STOKING" OF FNDN. REINFORCING AND ANCHOR BOLTS IS NOT ALLOWED (EXCEPT FOR CMU STRAIGHT BAR DOWELS) AND WILL BE REJECTED.
- ALL SLABS TO BE WET-CURED FOR AT LEAST 7 DAYS.
- FORM RELEASE AGENT TO BE APPLIED TO FORMS PRIOR TO PLACING REINFORCING. DO NOT LET FORM RELEASE AGENT COME IN CONTACT WITH REBAR, NO EXCEPTIONS.