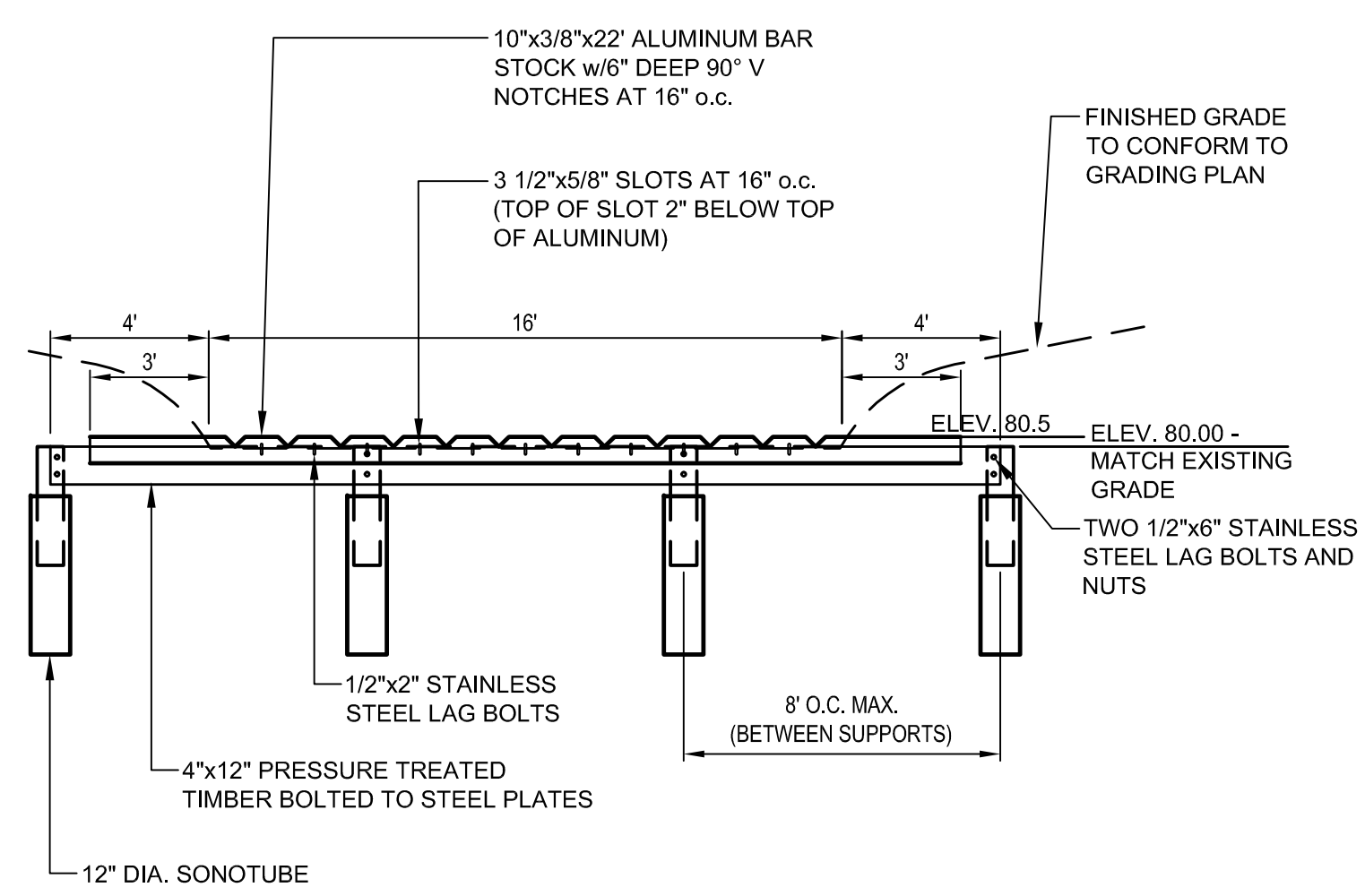


A	B	C	O ₂	O ₂₅	LENGTH
80.0	79.5	5'	1.36 cfs	2.67 cfs	16'

NOTE: LEVEL LIP (POINT 'A') SHOULD BE SET EVEN WITH EXISTING GROUND ELEVATION

TYPICAL SECTION



TYPICAL ELEVATION

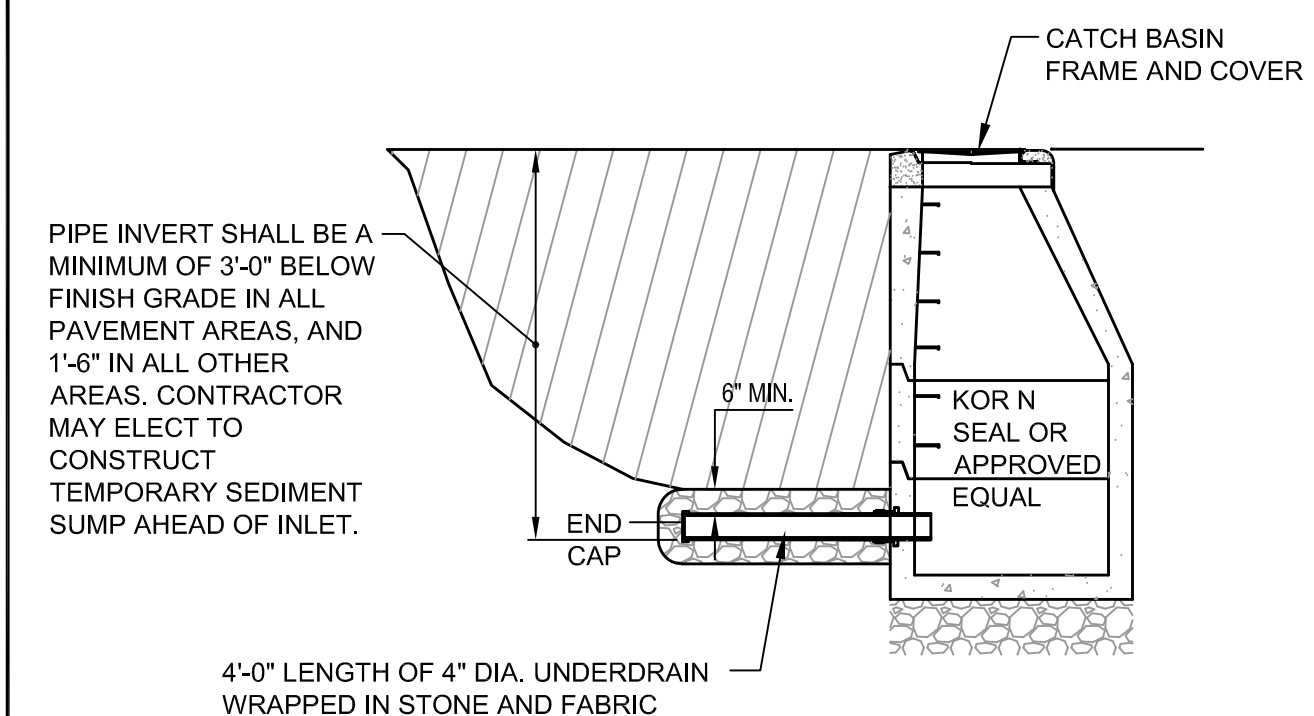
MAINTENANCE

THE LEVEL SPREADER SHOULD BE CHECKED PERIODICALLY AND AFTER EVERY MAJOR STORM TO DETERMINE IF THE LIP HAS BEEN DAMAGED AND TO DETERMINE THAT THE DESIGN CONDITIONS HAVE NOT CHANGED. ANY DETRIMENTAL SEDIMENT ACCUMULATION SHOULD BE REMOVED. IF RILLING HAS TAKEN PLACE ON THE LIP, THEN THE DAMAGE SHOULD BE REPAIRED AND RE-VEGETATED. THE VEGETATION SHOULD BE MOWED OCCASIONALLY TO CONTROL WEEDS AND THE ENCRUSTMENT OF WOODY VEGETATION. CLIPPINGS SHOULD BE REMOVED AND DISPOSED OF OUTSIDE THE SPREADER AND AWAY FROM THE OUTLET AREA. FERTILIZATION SHOULD BE DONE AS NECESSARY TO KEEP THE VEGETATION HEALTHY AND DENSE.

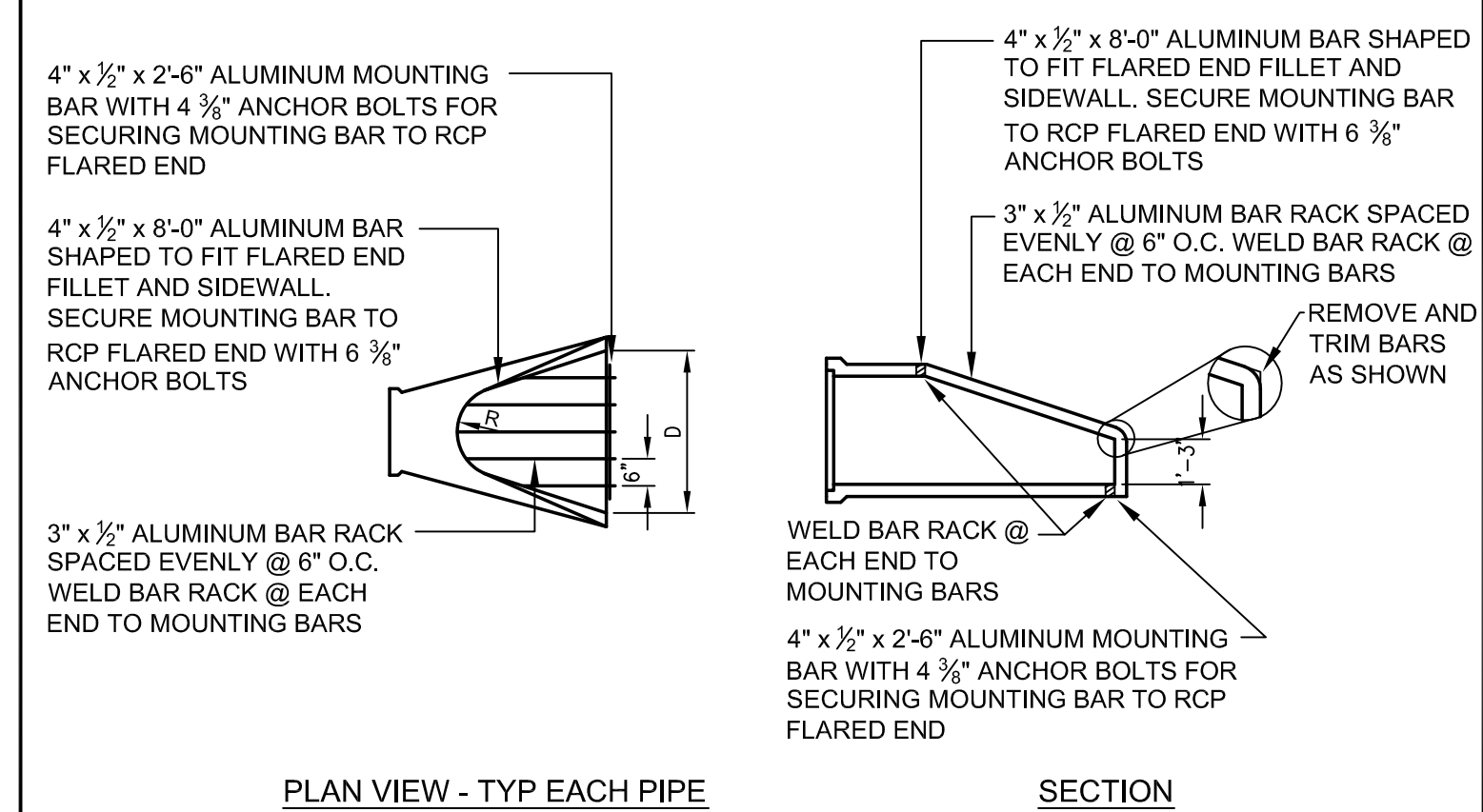
CONSTRUCTION SPECIFICATIONS

1. CONSTRUCT THE LEVEL SPREADER LIP ON A ZERO PERCENT GRADE TO INSURE UNIFORM SPREADING OF RUNOFF.
2. LEVEL SPREADER SHALL BE CONSTRUCTED ON UNDISTURBED SOIL AND NOT ON FILL.
3. AN EROSION STOP SHALL BE PLACED VERTICALLY A MINIMUM OF SIX INCHES DEEP IN A SLIT TRENCH ONE FOOT BACK OF THE LEVEL LIP AND PARALLEL TO THE LIP. THE EROSION STOP SHALL EXTEND THE ENTIRE LENGTH OF THE LEVEL LIP.
4. THE ENTIRE LEVEL LIP AREA SHALL BE PROTECTED BY PLACING TWO STRIPS OF JUTE OR EXCELSIOR MATTING ALONG THE LIP. EACH STRIP SHALL OVERLAP THE EROSION STOP BY AT LEAST SIX INCHES.
5. THE ENTRANCE CHANNEL TO THE LEVEL SPREADER SHALL NOT EXCEED A 1 PERCENT GRADE FOR AT LEAST 50 FEET BEFORE ENTERING INTO THE SPREADER.
6. THE FLOW FROM THE LEVEL SPREADER SHALL OUTLET ONTO STABILIZED AREAS. WATER SHOULD NOT RE-CONCENTRATE IMMEDIATELY BELOW THE SPREADER.
7. PERIODIC INSPECTION AND REQUIRED MAINTENANCE SHALL BE PERFORMED.

A LEVEL LIP SPREADER DETAIL
N.T.S.



C INLET SUBGRADE DRAINAGE DETAIL
N.T.S.

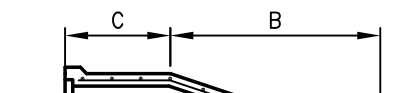


PLAN VIEW - TYP EACH PIPE

SECTION



END VIEW



SECTION

DIA.	A	B	C	D	E	R
18"	9"	2'-3"	3'-10"	3'-0"	2 1/2"	11"
24"	9 1/2"	3'-7 1/2"	2'-6"	4'-0"	3"	14"
30"	12"	4'-6"	1'-7 1/4"	5'-0"	3 1/2"	15"
36"	15"	5'-3"	2'-10 1/4"	6'-0"	4"	1'-8"
42"	21"	5'-3"	2'-11"	6'-6"	4 1/2"	22"
48"	24"	6'-0"	2'-2"	7'-0"	5"	22"
54"	27"	5'-5"	2'-11"	7'-6"	5 1/2"	24"
60"	30"	5'-0"	3'-3"	8'-0"	6"	24"

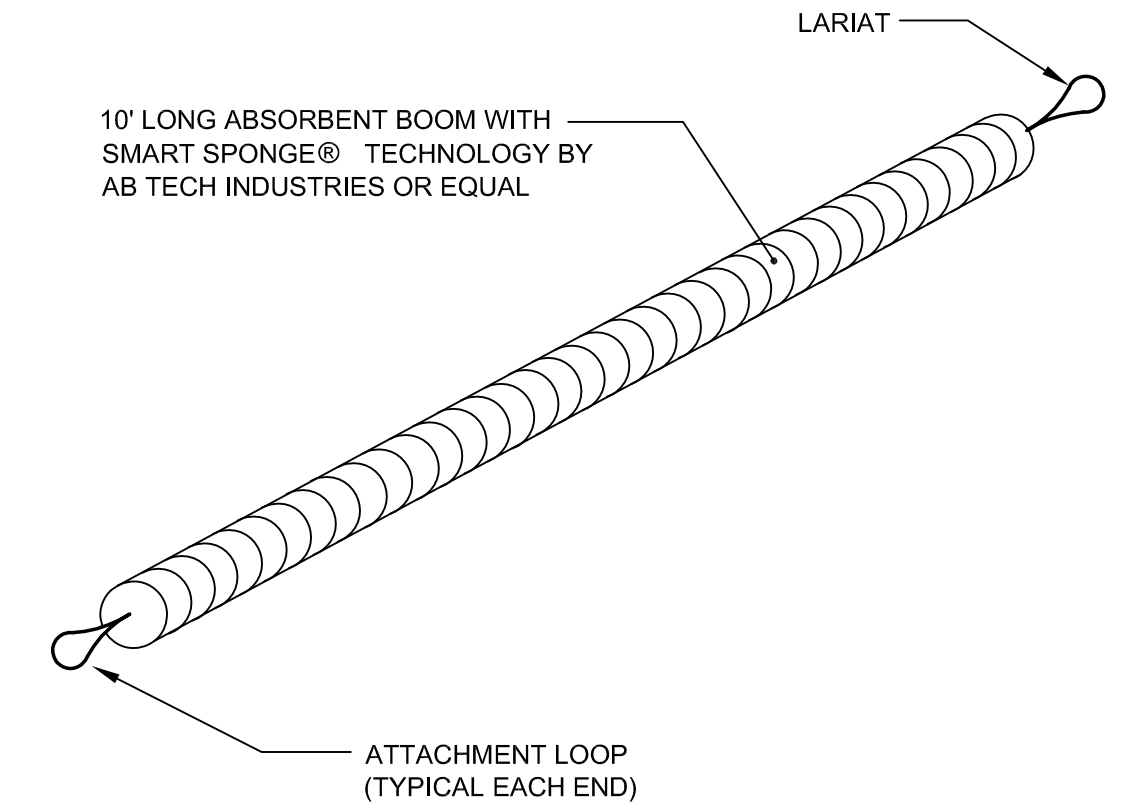
NOTE: JOINTS MAY BE FURNISHED WITH EITHER BELL AND SPIGOT OR TONGUE AND GROOVE ENDS.

* BAR RACKS ARE ONLY REQUIRED ON PIPES 18" AND OVER IN SIZE.

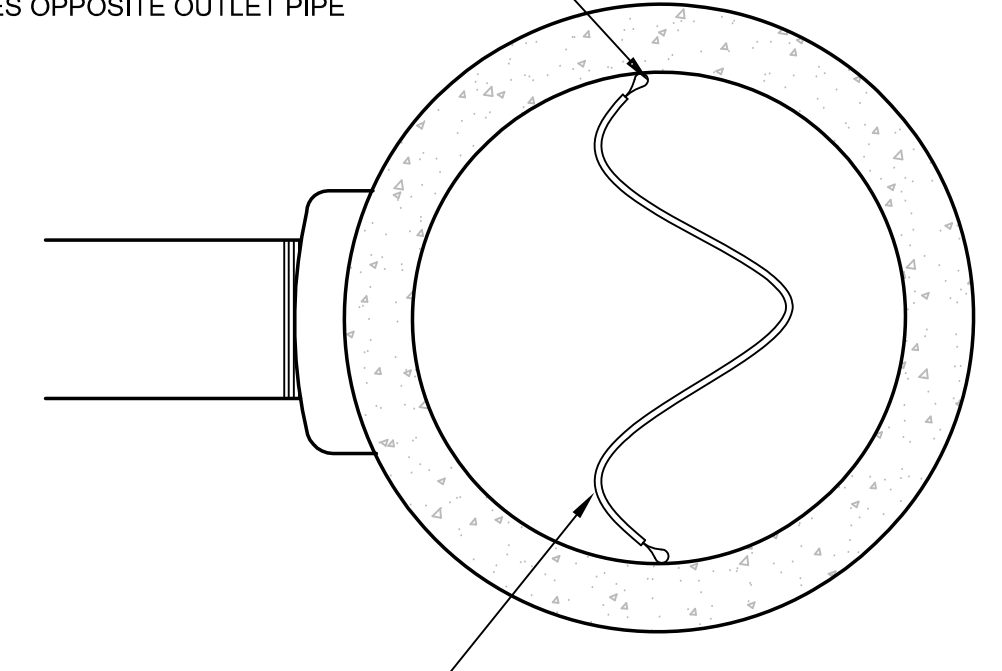
* USE FIELD MITER FOR CULVERTS WITH A DIAMETER OF LESS THAN 18"

REQUIRED FOR ALL INLETS/OUTLETS FOR PIPE OVER 18" DIAMETER.

D RCP FLARED END WITH BAR RACK DETAIL
N.T.S.



PROVIDE TEMPORARY ATTACHMENT FOR END OF BOOM ON CATCH BASIN SIDES OPPOSITE OUTLET PIPE

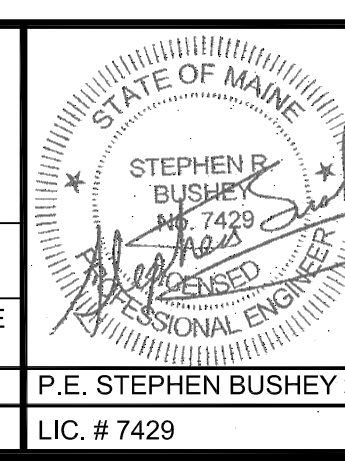


PLAN VIEW LOOKING INTO CATCH BASIN

- NOTES:
1. REQUIRED FOR ALL CATCH BASINS WHICH RECEIVE RUNOFF FROM PAVED AREAS.
 2. REFER TO EROSION CONTROL REPORT FOR ADDITIONAL INFORMATION.
 3. CONTRACTOR MAY SELECT OTHER TYPE OF EQUIVALENT OIL ABSORBENT PRODUCTS.
 4. SUBMITTALS ARE REQUIRED FOR THESE ITEMS.

E TEMPORARY WATER QUALITY MEASURE INSIDE OF CATCH BASINS
N.T.S.

REV	DATE	DESCRIPTION
2	07.22.14	REMOVED DETAIL D AND SUBMITTED AMENDED PLANS TO CITY AND MEDEP
1	04.09.13	SUBMITTED TO MEDEP STORMWATER DISCHARGE PERMIT



PROJECT	MULTI-USE DEVELOPMENT 2282 CONGRESS ST., PORTLAND, ME
SHEET TITLE	EROSION CONTROL DETAILS
CLIENT	CJ DEVELOPERS, INC. 35 PRIMROSE LANE, FREEPORT, MAINE 04032 AND PORTLAND PROPERTY HOLDINGS, LLC 2 MAIN STREET, SUITE 200, TOPSHAM, MAINE 04086

FST FAY, SPOFFORD & THORNDIKE ENGINEERS - PLANNERS - SCIENTISTS 778 MAIN ST., SUITE 8, SOUTH PORTLAND, ME 04106	
DRAWN: CMW	DATE: OCTOBER 2013
DESIGNED: SRB	SCALE: N.T.S.
CHECKED: SRB	JOB NO. 3118
FILE NAME: 3118-DET	SHEET
C-8.8	