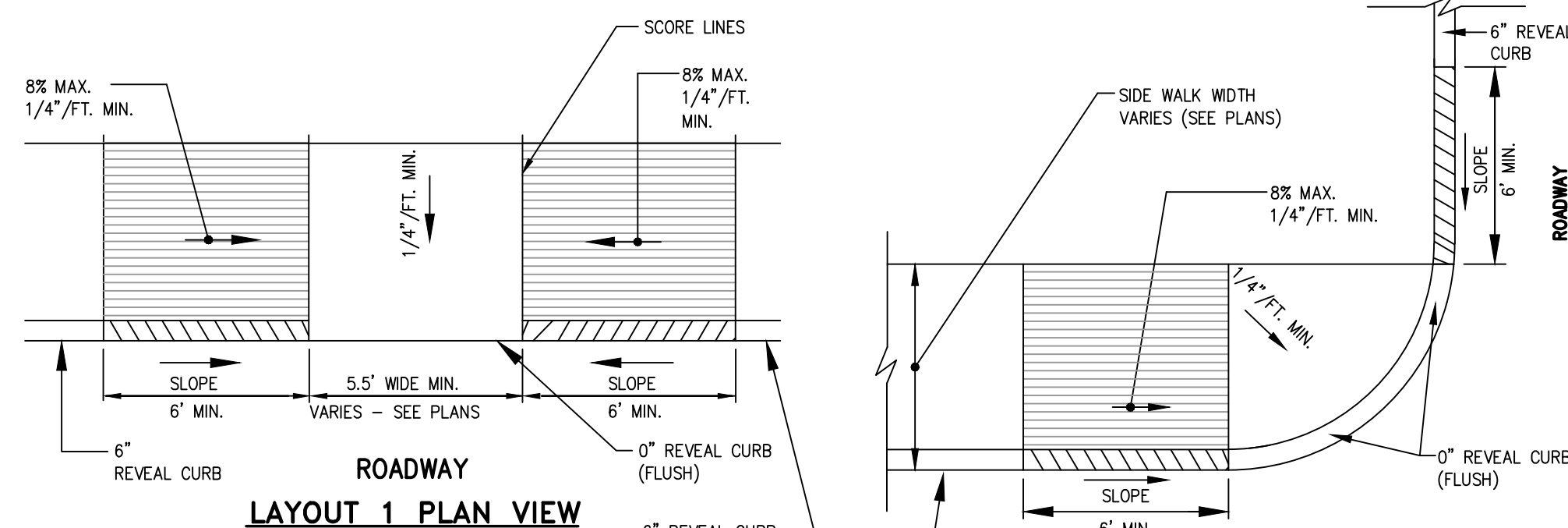
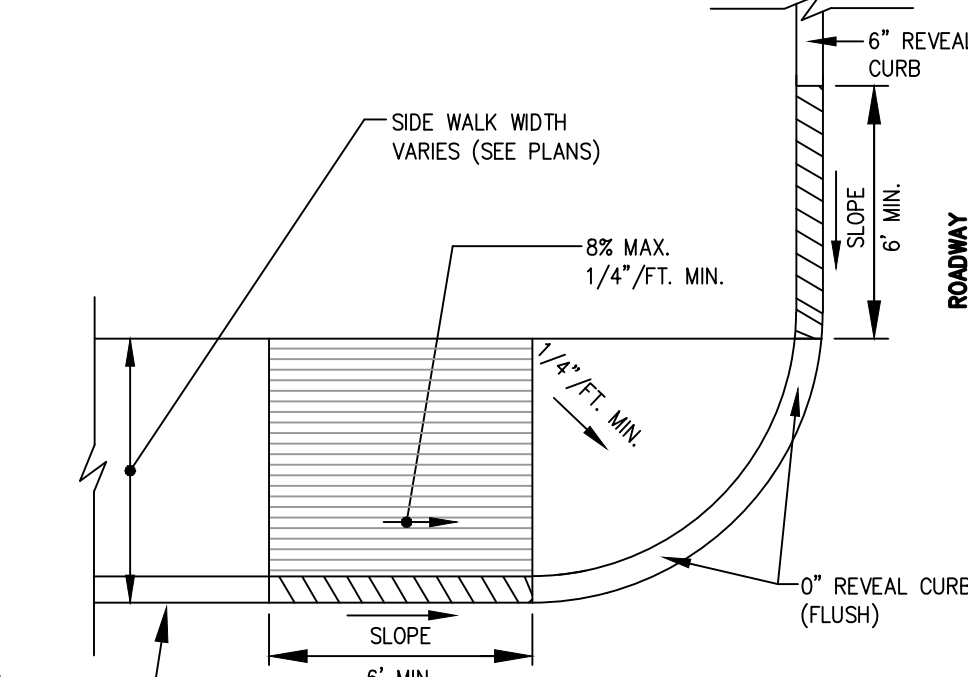


- NOTES:**
1. VERTICAL GRANITE CURB TO MEET MDT STANDARD SPECIFICATIONS.
 2. REFER TO PLANS FOR LOCATIONS OF GRANITE CURBS.
 3. JOINTS SHALL BE MORTARED.
 4. JOINT SEPARATION SHALL BE 1/4" AND 5/8".
 5. MAX. LENGTH OF STRAIGHT CURB STONES = 6'; MIN. LENGTH = 3'.
 6. CIRCULAR CURB REQUIRED FOR RADIUS LESS THAN 50'.

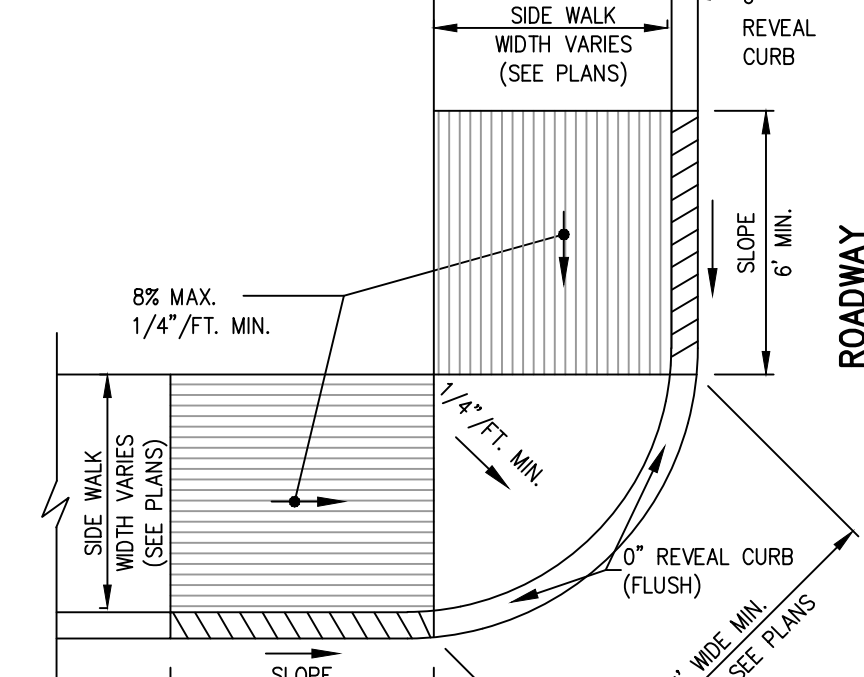
A TYPE 1 VERTICAL GRANITE CURB DETAIL
N.T.S.



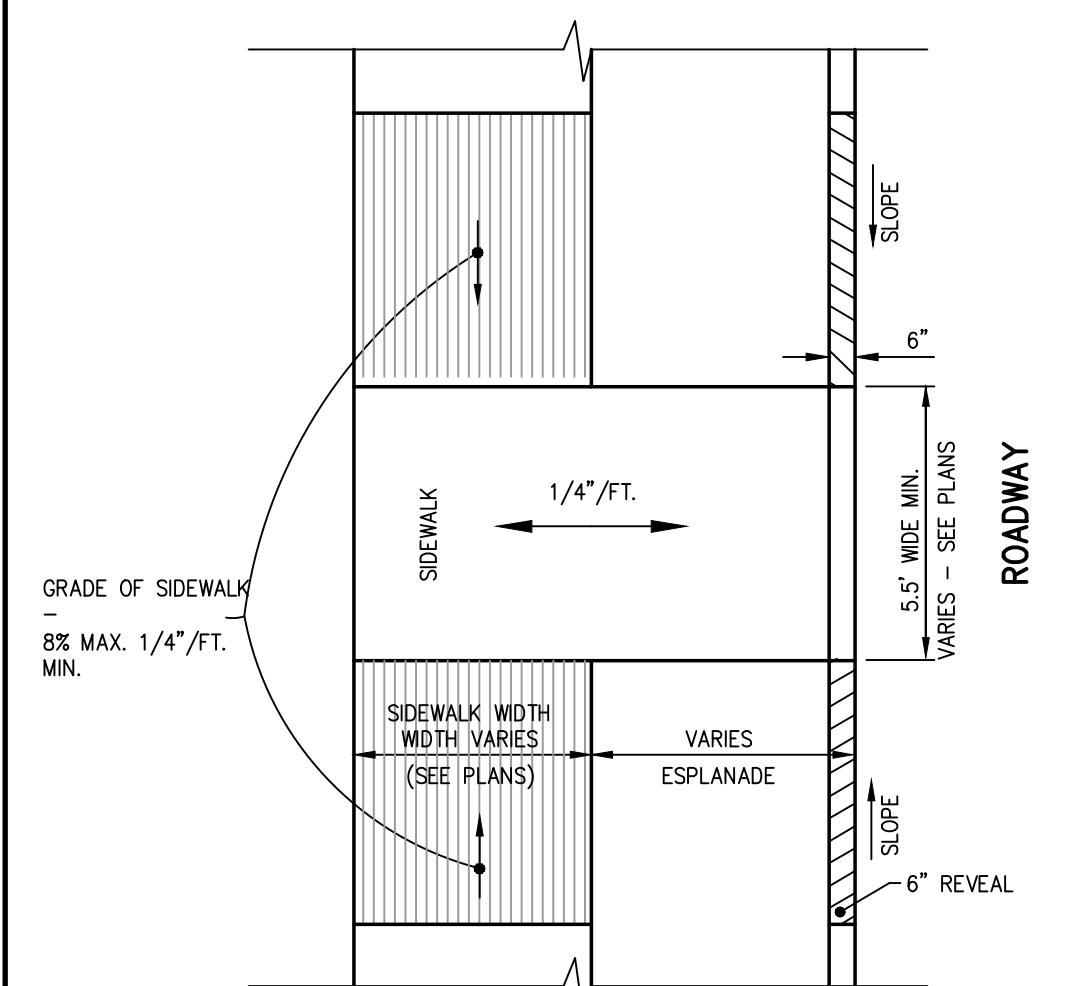
ROADWAY LAYOUT 1 PLAN VIEW



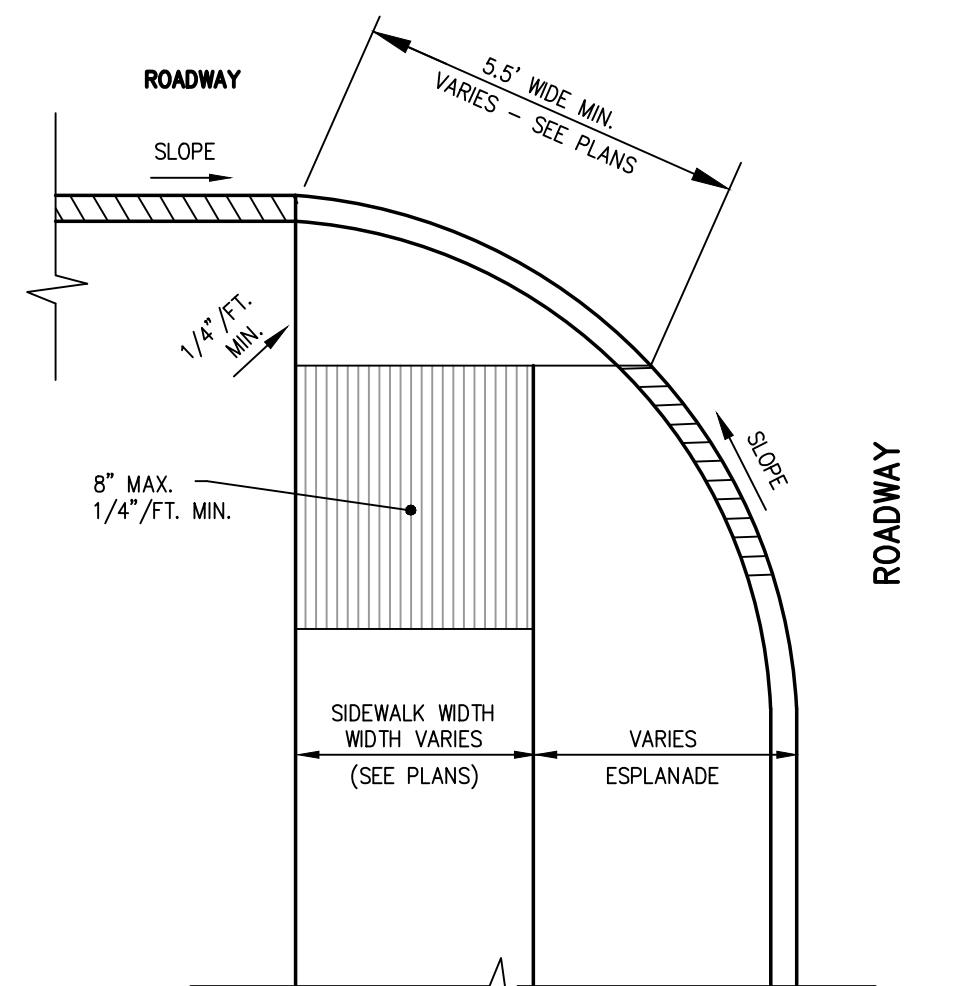
ROADWAY LAYOUT 2 PLAN VIEW



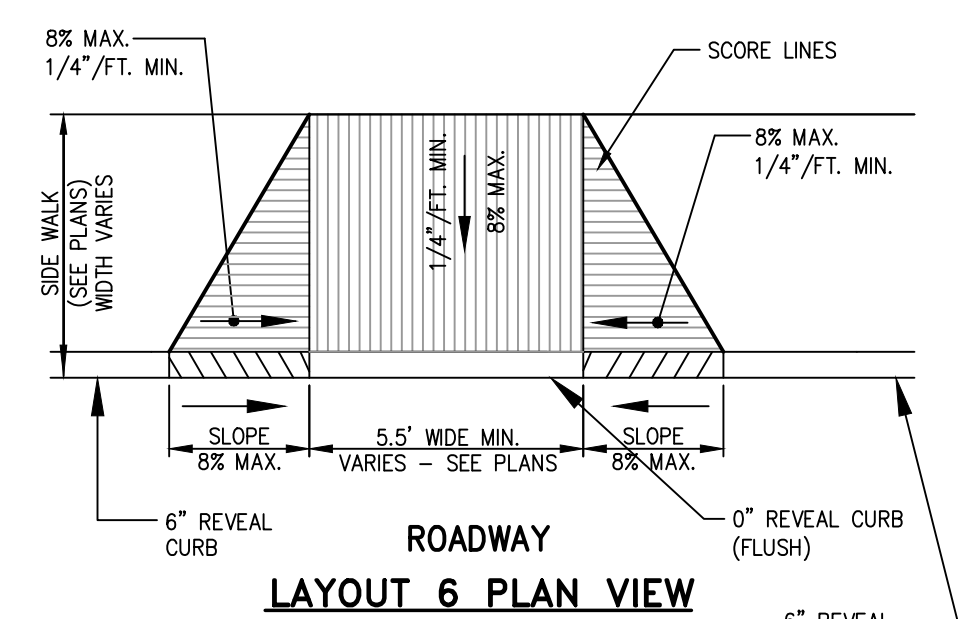
ROADWAY LAYOUT 3 PLAN VIEW



ROADWAY LAYOUT 4 PLAN VIEW



ROADWAY LAYOUT 5 PLAN VIEW

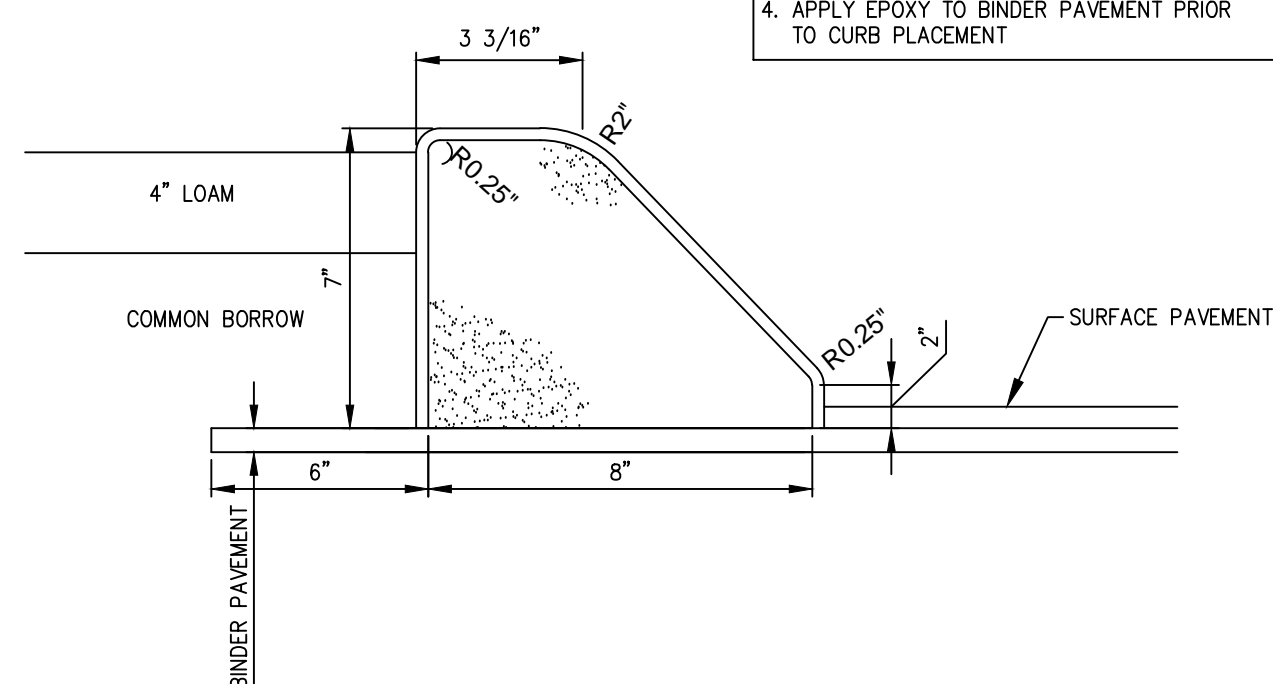


ROADWAY LAYOUT 6 PLAN VIEW

A TACTILE WARNING STRIP IS REQUIRED WHERE RAMP ABUTS AREA USED BY MOTORIZED VEHICLES WITHIN THE CITY OF PORTLAND OR MDT RIGHT OF WAY.

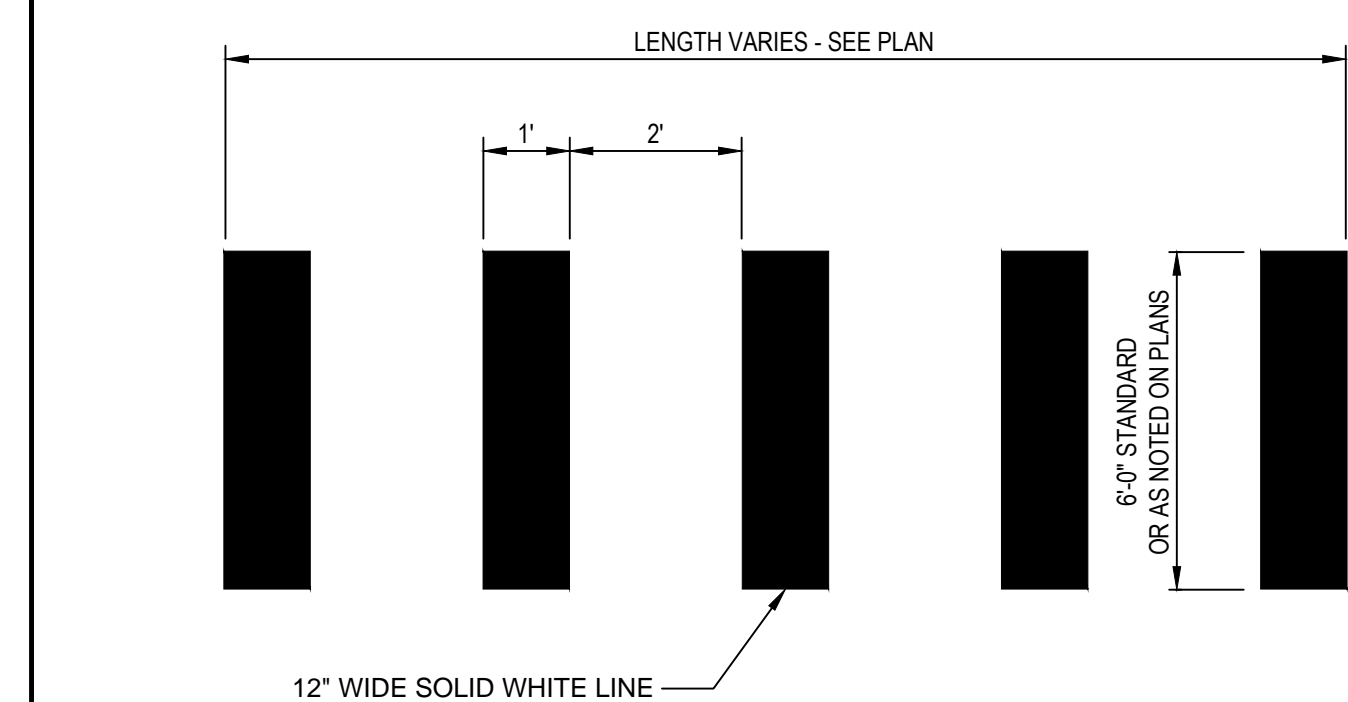
NOTE:
RAMPS SHALL BE CONSTRUCTED IN ACCORDANCE WITH AMERICANS WITH DISABILITIES ACT (ADA).

D BARRIER FREE RAMP DETAILS
N.T.S.

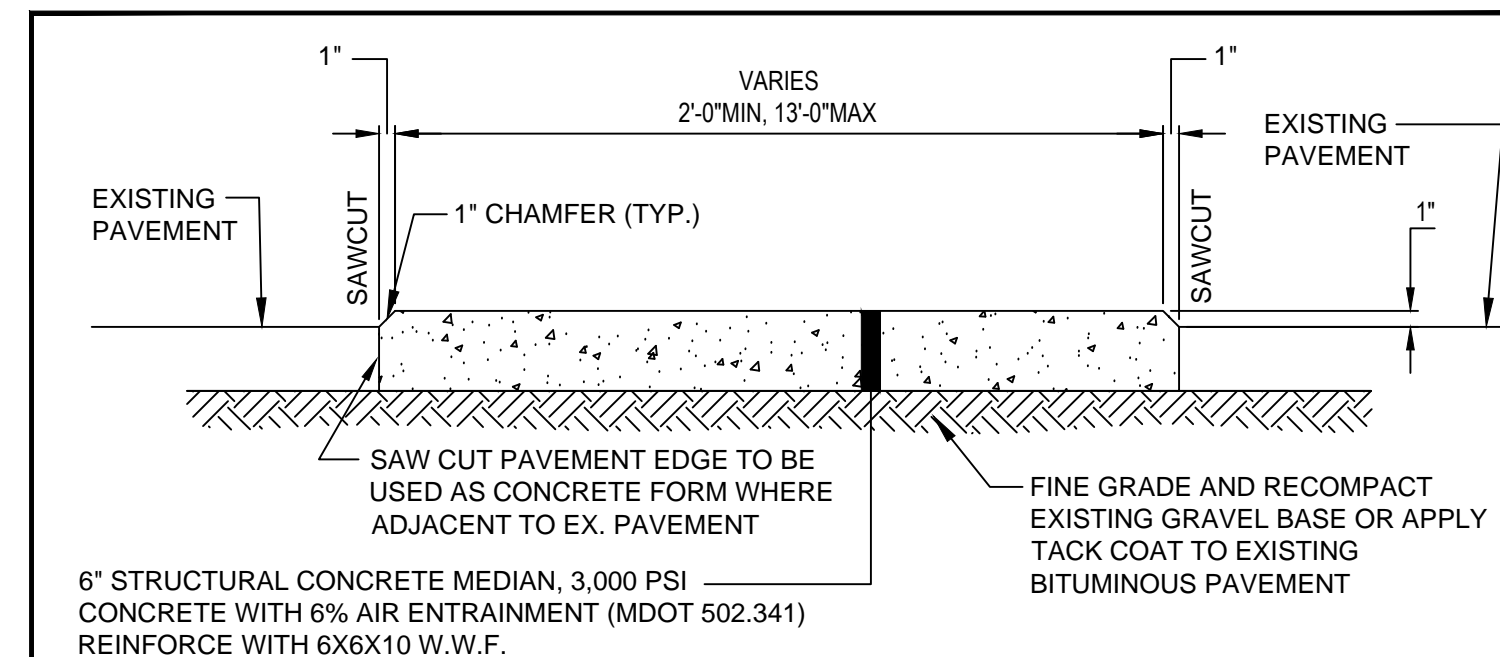


- NOTES:**
1. 4,000 PSI CONCRETE WITH FIBER REINFORCEMENT.
 2. 4% TO 6% AIR ENTRAINMENT.
 3. 1" TO 2" SLUMP.
 4. APPLY EPOXY TO BINDER PAVEMENT PRIOR TO CURB PLACEMENT

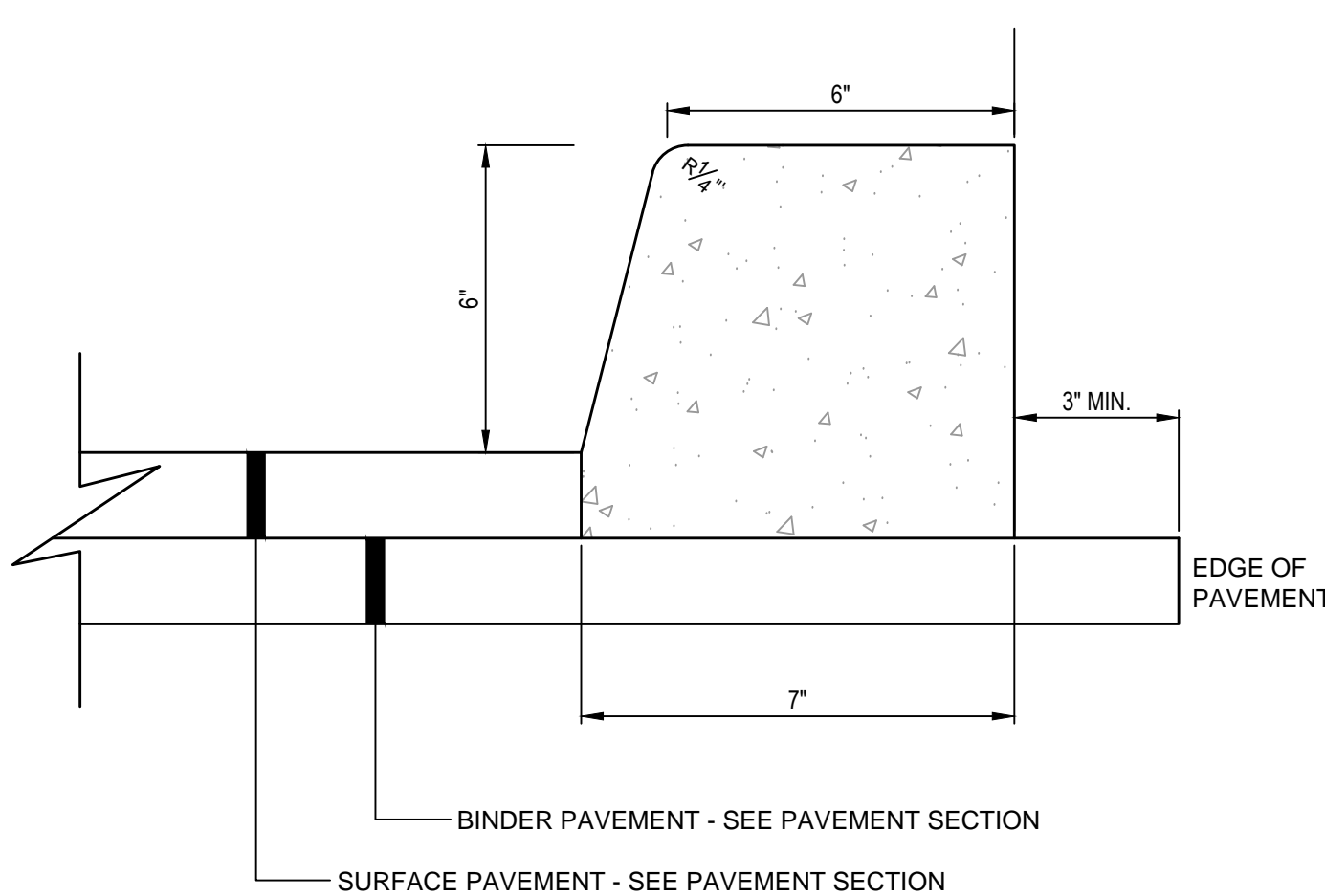
B EXTRUDED SLIPFORM SLOPED CONCRETE CURB DETAIL - SLOPED
N.T.S.



F CROSSWALK STRIPING DETAIL
N.T.S.

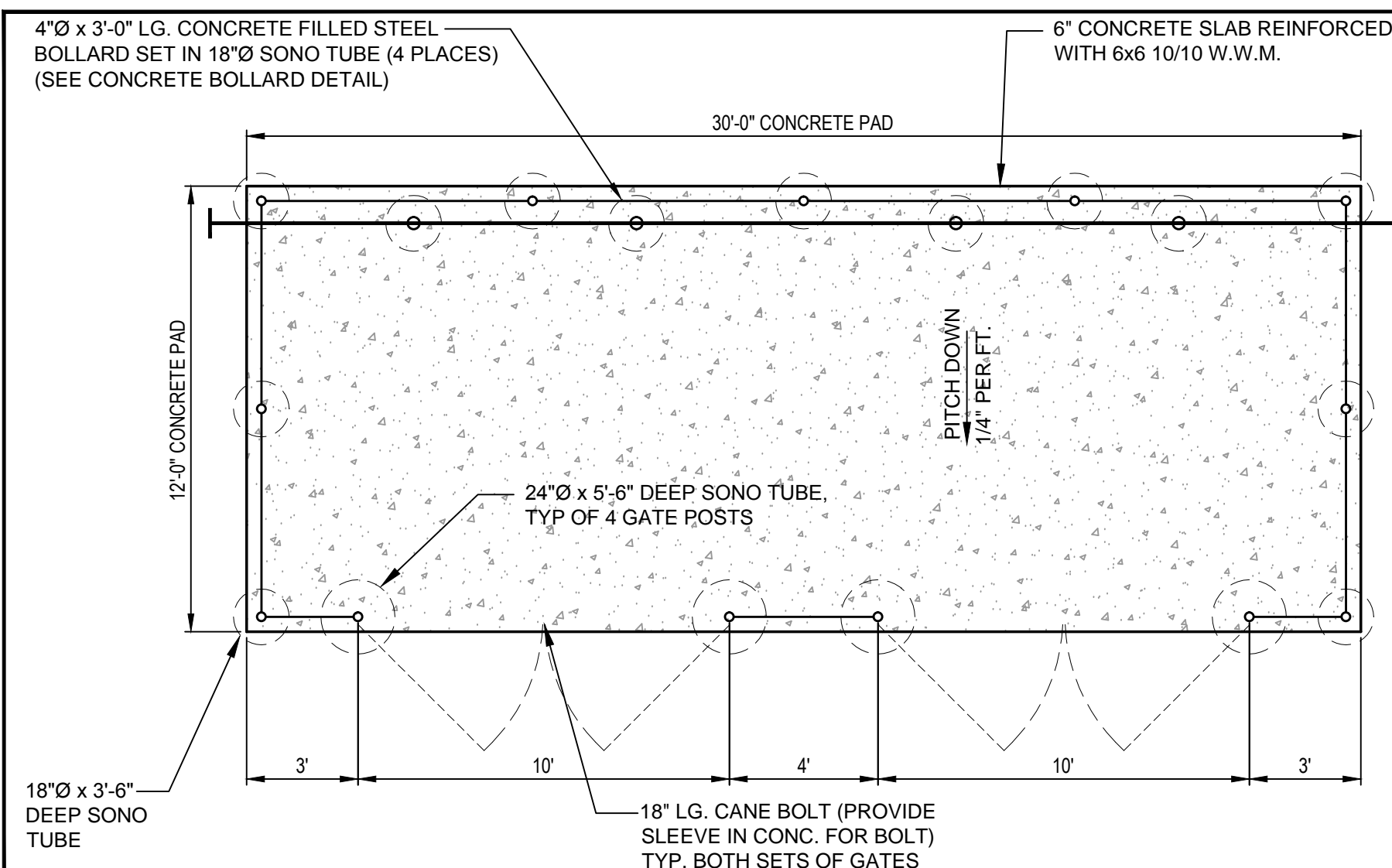


G CONCRETE MEDIAN STRIP TYPICAL SECTION
N.T.S.



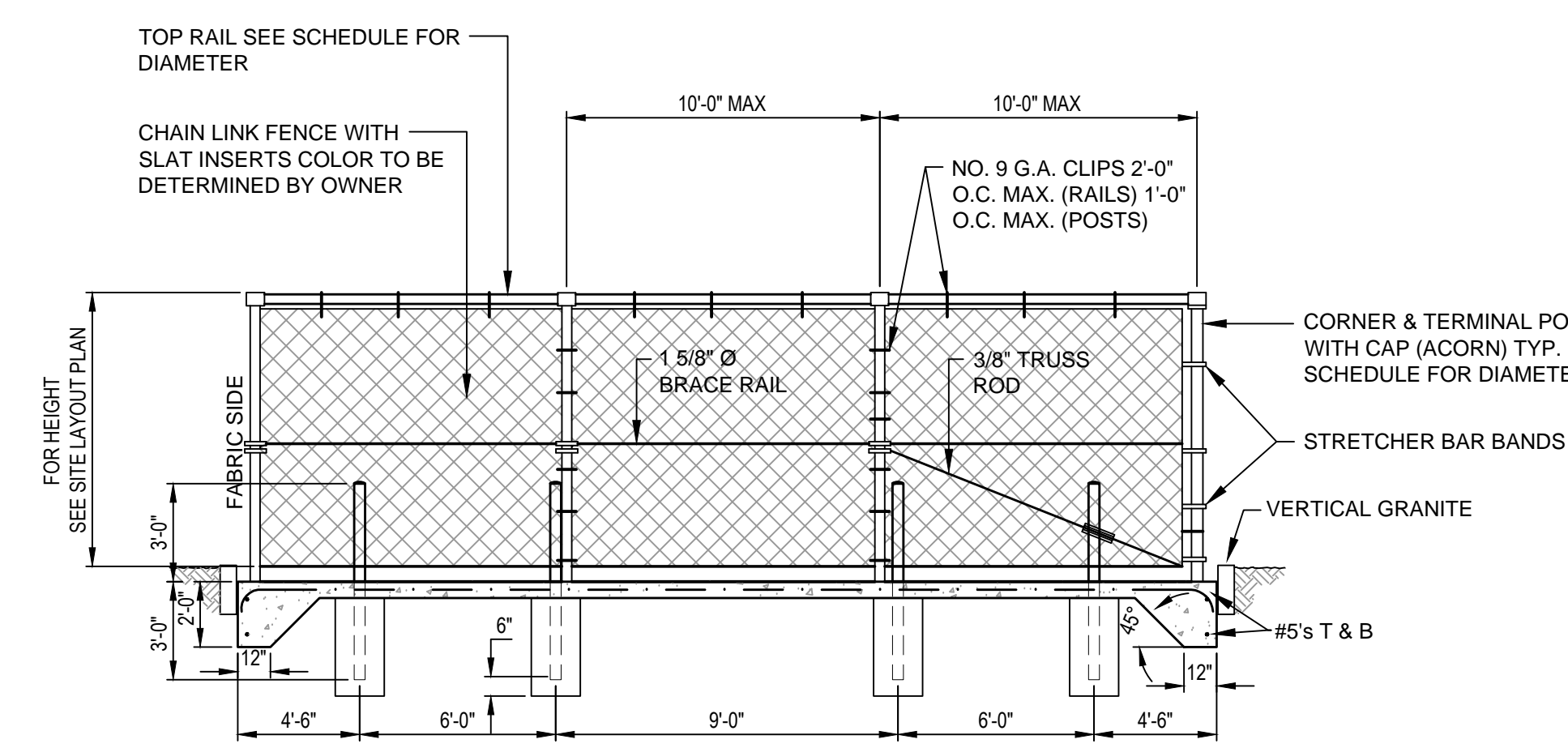
NOTE:
TO BE USED WHEN ADJACENT TO SIDEWALKS; ALL OTHER LOCATIONS SHALL BE SLOPED CONCRETE CURB AS SHOWN IN DETAIL 'B'.

C EXTRUDED SLIPFORM VERTICAL CONCRETE CURB DETAIL
N.T.S.



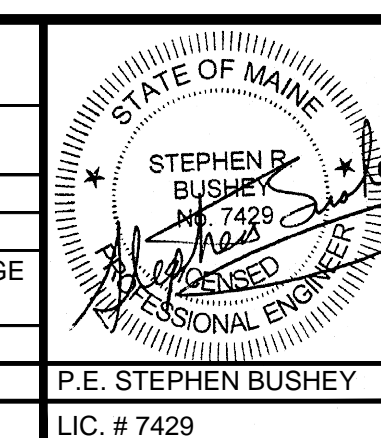
E DUMPSTER ENCLOSURE PLAN AND DETAILS
N.T.S.

| CHAIN LINK FENCE INSTALLATION SCHEDULE | | | |
|--|------------------------|-------------------------|--|
| FENCE HEIGHT (A) | TOP RAIL PIPE DIA. (B) | LINE POST PIPE DIA. (C) | CORNER, TERMINAL & GATE POST PIPE DIA. (D) |
| 4' | 1.66" | 1.90" | 2.375" |
| 6' | 1.66" | 1.90" | 2.375" |
| 8' | 1.66" | 2.375" | 2.875" |
| 10' | 1.66" | 2.875" | 2.875" |



SECTION A

| REV | DATE | DESCRIPTION |
|-----|----------|---|
| 5 | 07.22.14 | ADDED DETAILS F AND G SUBMITTED AMENDED PLANS TO CITY AND MEDEP |
| 4 | 05.03.13 | REVISED AND RESUBMITTED TO CITY |
| 3 | 04.18.13 | REVISED PER CITY STAFF COMMENTS |
| 2 | 04.09.13 | SUBMITTED TO MEDEP STORMWATER DISCHARGE PERMIT |
| 1 | 03.28.13 | SUBMITTED TO CITY OF PORTLAND |



PROJECT
MULTI-USE DEVELOPMENT
2282 CONGRESS ST., PORTLAND, ME

SHEET TITLE
SITE DETAILS

CLIENT
CJ DEVELOPERS, INC.
35 PRIMROSE LANE, FREEPORT, MAINE 04032
AND PORTLAND PROPERTY HOLDINGS, LLC
2 MAIN STREET, SUITE 200, TOPSHAM, MAINE 04086

FST 100 YEARS
FAY, SPOFFORD & THORNDIKE
ENGINEERS • PLANNERS • SCIENTISTS
778 MAIN ST, SUITE 8, SOUTH PORTLAND, ME 04106

DRAWN: CMW DATE: OCTOBER 2013
DESIGNED: SRB SCALE: N.T.S.
CHECKED: SRB JOB NO. 3118
FILE NAME: 3118-DET
SHEET **C-8.4**