

SELECT TRIMMING AND CLEARING TO PRESERVE EXISTING TREES. CONTRACTOR SHALL COORDINATE PRE-CLEARING MEETING PRIOR TO CONSTRUCTION.

SUBJECT TO MTA'S APPROVAL, IMPROVE THE LANDSCAPING IN THIS AREA. THE IMPROVEMENTS SHALL BE IN ACCORDANCE WITH SECTION 4.7 PLANT SELECTION OF THE CITY OF PORTLAND TECHNICAL MANUAL SECTION 7 LANDSCAPING AND LANDSCAPE PRESERVATION

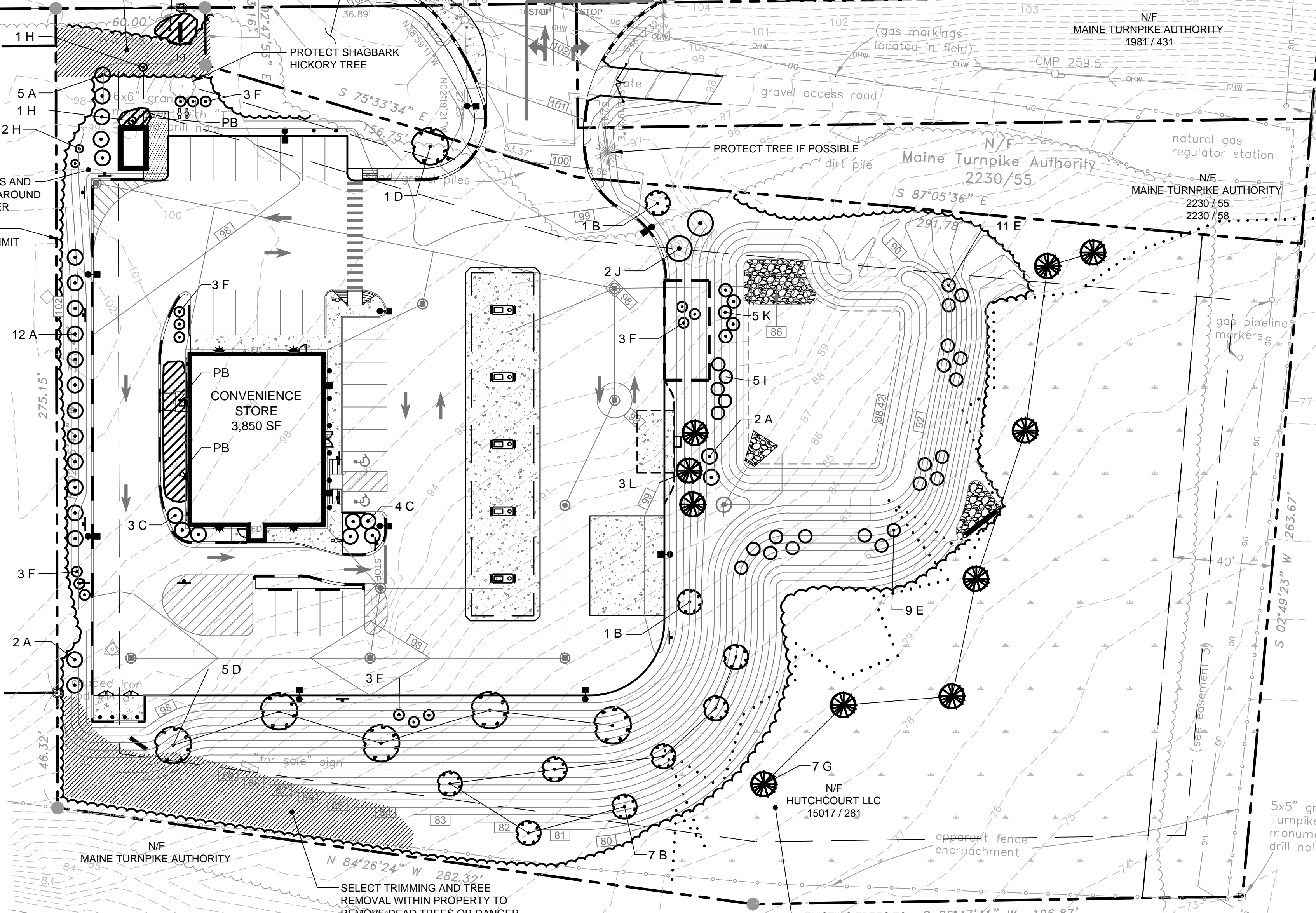
BLUEBERRY

MAINE TURNPIKE AUTHORITY

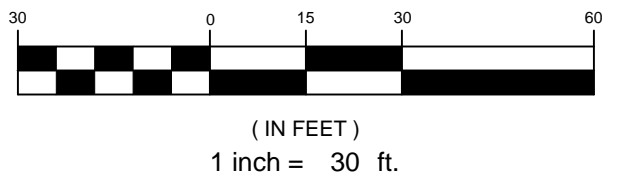
CONGRESS STREET

MAINE TURNPIKE

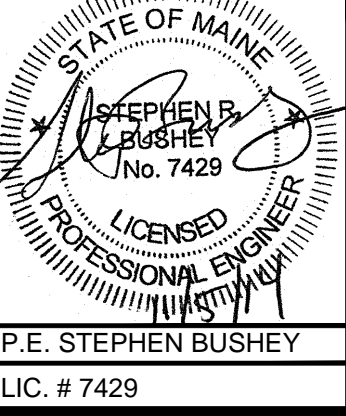
SKYWAY DRIVE



PLANTINGS LIST					
KEY	COMMON & BOTANICAL NAME	SIZE	ROOT	QTY	NOTES
A	DARK AMERICAN ARBORVITAE <i>Occidentalis 'Nigra'</i>	5' - 6' HT.	B & B	21	
B	ACCOLADE CHERRY <i>Prunus 'Accolade'</i>	2" CAL.	B & B	9	
C	GREY OWL JUNIPER <i>Juniperus virginiana 'Grey Owl'</i>	2 1/2' SPR.	B & B	7	
D	SWAMP WHITE OAK <i>Quercus bicolor</i>	2" CAL.	B & B	6	
E	HIGHBUSH BLUEBERRY <i>V. Corymbosum</i>	3' - 4' HT.	CONT.	20	3 CANES
F	SHASTA VIBURNUM <i>Viburnum plicatum f. tomentosum 'Shasta'</i>	3' - 4' HT.	B & B	15	
G	WHITE SPRUCE <i>Picea glauca</i>	5' - 6' HT.	B & B	7	
H	RIVER BIRCH <i>Betula nigra</i>	8' - 10' HT.	B & B	4	
PB	PLANTING BEDS FOR ASSORTED PERENNIALS @ 15" DEEP PREPARED PLANTING SOIL				
I	BAYBERRY <i>Myrica pennsylvanica</i>	#3		5	
J	BLACK TUPELO <i>Wyssa Sylvatica</i>	2" CAL.	B & B	2	
K	WINTERBERRY <i>Ilex Verticillata 'Apollo'</i>	#2		5	
L	EASTERN LARCH <i>Larix laricina</i>	5' - 6' HT.	B & B	3	



REV	DATE	DESCRIPTION
8	11.05.14	REVISED PER CITY ARBORIST COMMENTS AND RESUBMITTED
7	10.27.14	REVISED PER CITY ARBORIST COMMENTS AND RESUBMITTED
6	08.06.14	REVISED PER CITY COMMENTS AND VALUE ENGINEERING
5	07.22.14	REVISED LANDSCAPE AND SUBMITTED AMENDED PLANS TO CITY AND MEDEP
4	05.03.13	REVISED AND RESUBMITTED TO CITY
3	04.18.13	REVISED PER CITY STAFF COMMENTS
2	04.09.13	SUBMITTED TO MEDEP STORMWATER DISCHARGE PERMIT
1	03.28.13	SUBMITTED TO CITY OF PORTLAND
REV	DATE	DESCRIPTION



PROJECT
MULTI-USE DEVELOPMENT
 2282 CONGRESS ST., PORTLAND, ME
 SHEET TITLE
LANDSCAPE PLAN
 CLIENT
 CJ DEVELOPERS, INC.
 35 PRIMROSE LANE, FREEPORT, MAINE 04032
 AND PORTLAND PROPERTY HOLDINGS, LLC
 2 MAIN STREET, SUITE 200, TOPSHAM, MAINE 04086

FST 100 YEARS
FAY, SPOFFORD & THORNDIKE
 ENGINEERS · PLANNERS · SCIENTISTS
 778 MAIN ST, SUITE 8, SOUTH PORTLAND, ME 04106

DRAWN: CMW	DATE: OCTOBER 2013
DESIGNED: SRB	SCALE: 1" = 30'
CHECKED: SRB	JOB NO. 3118
FILE NAME: 3118-SP	SHEET

C-5.0