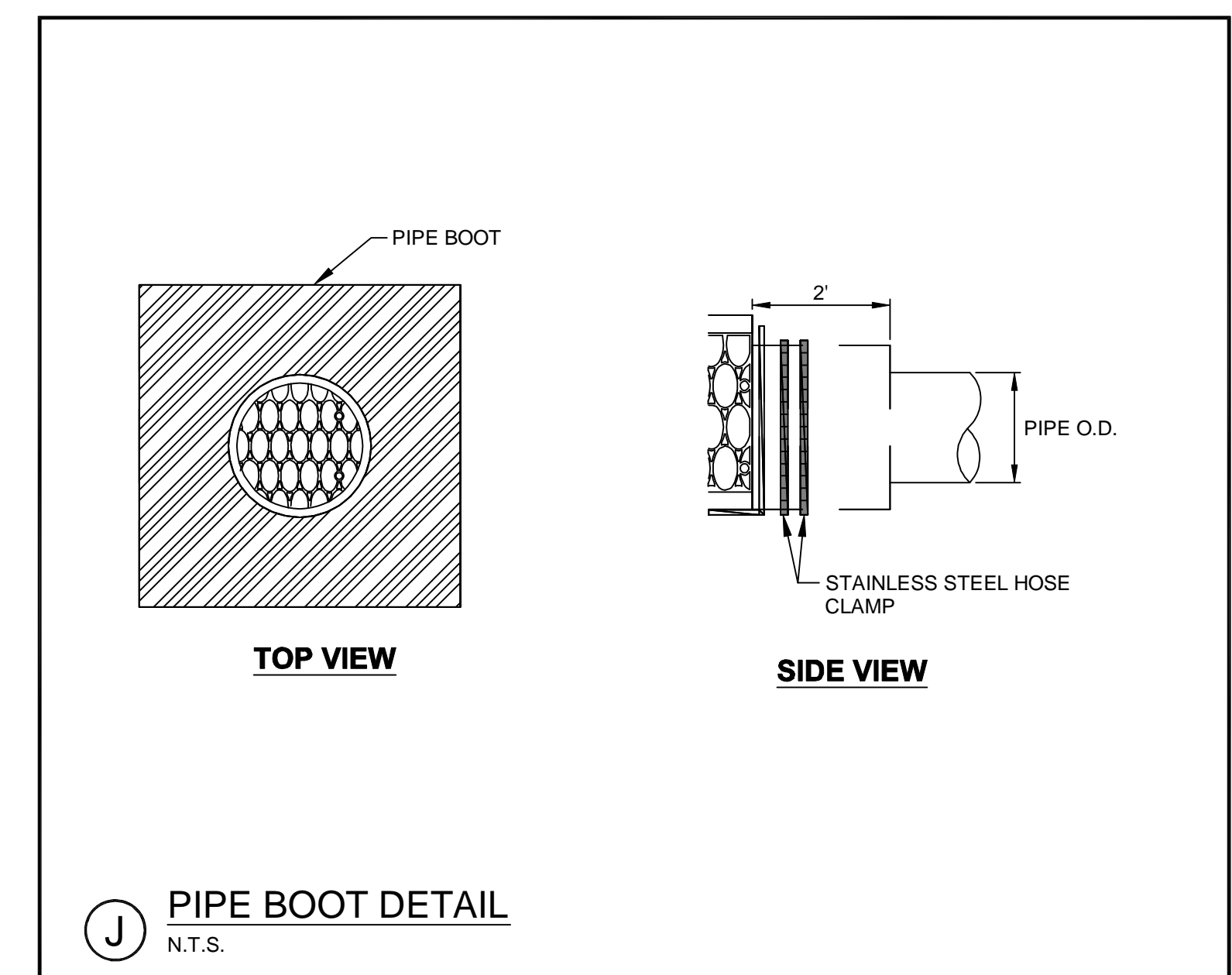
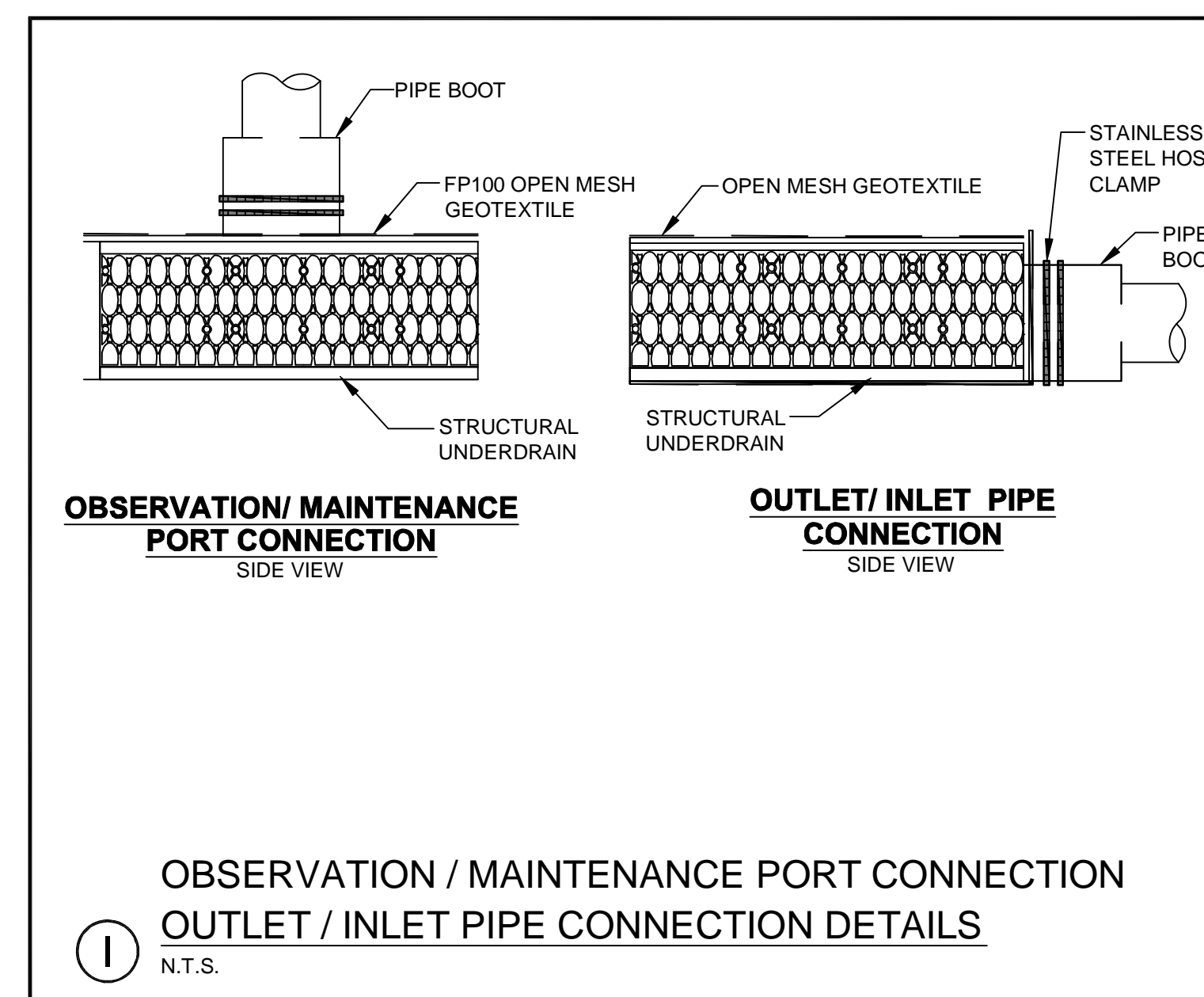
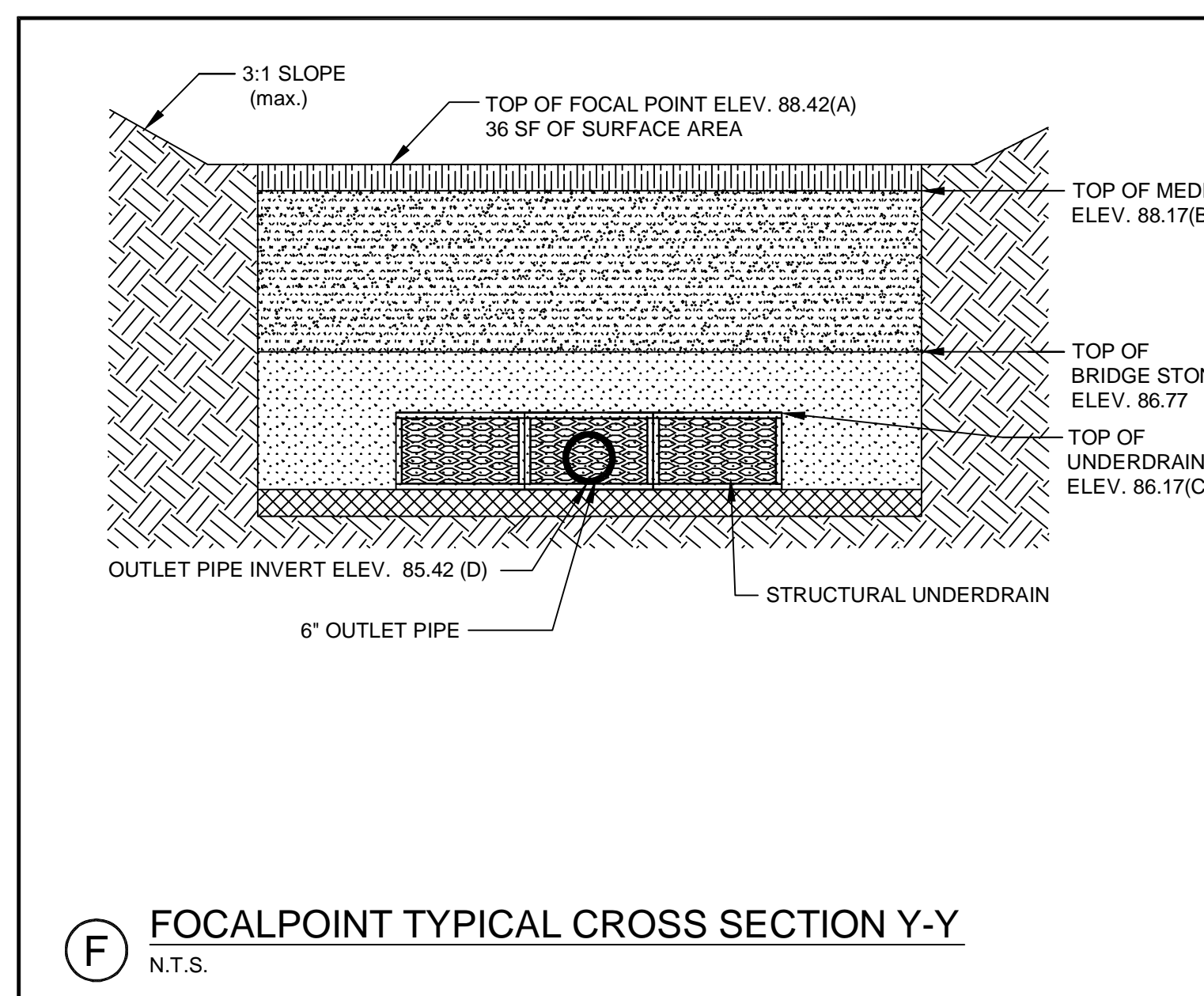
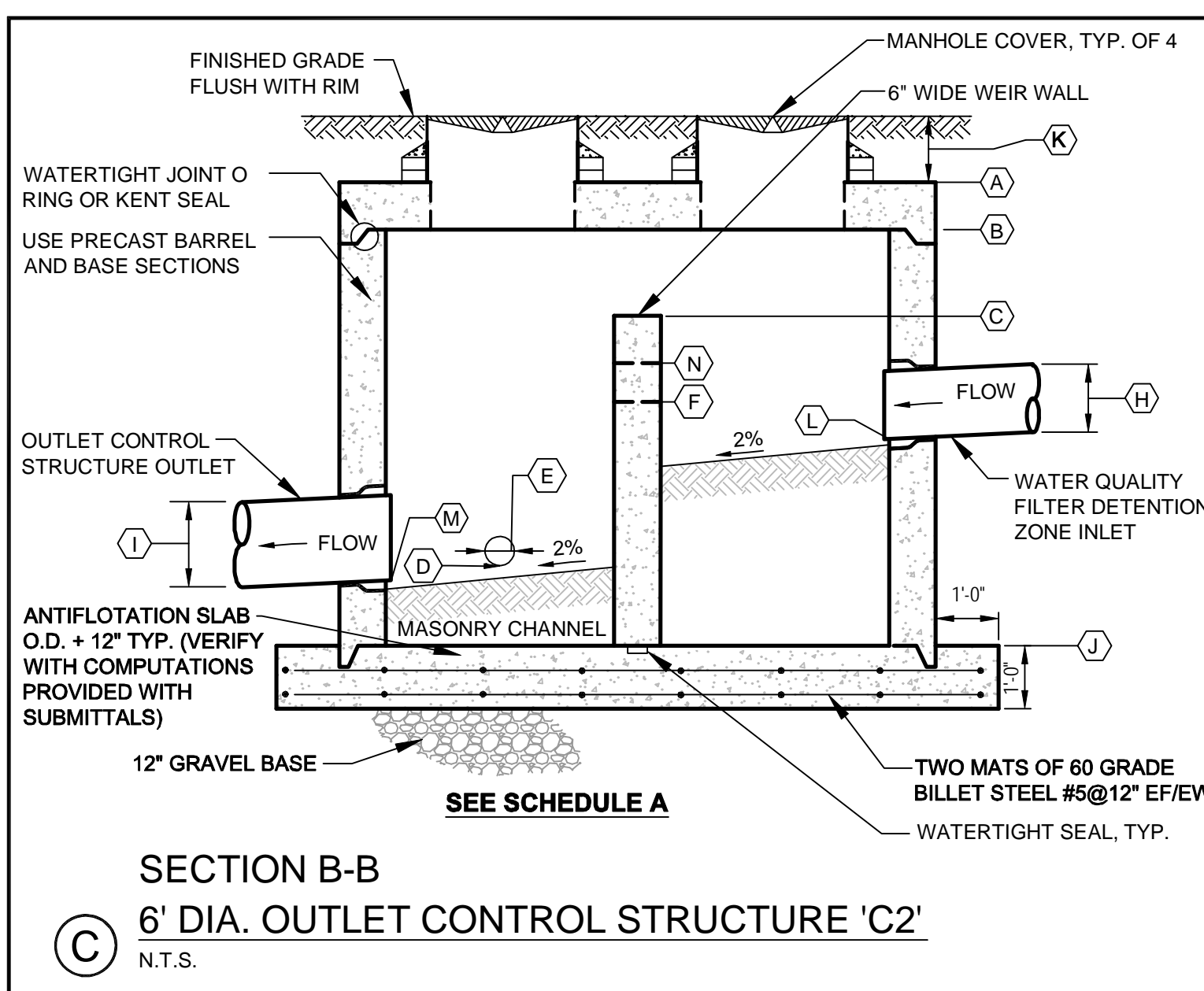
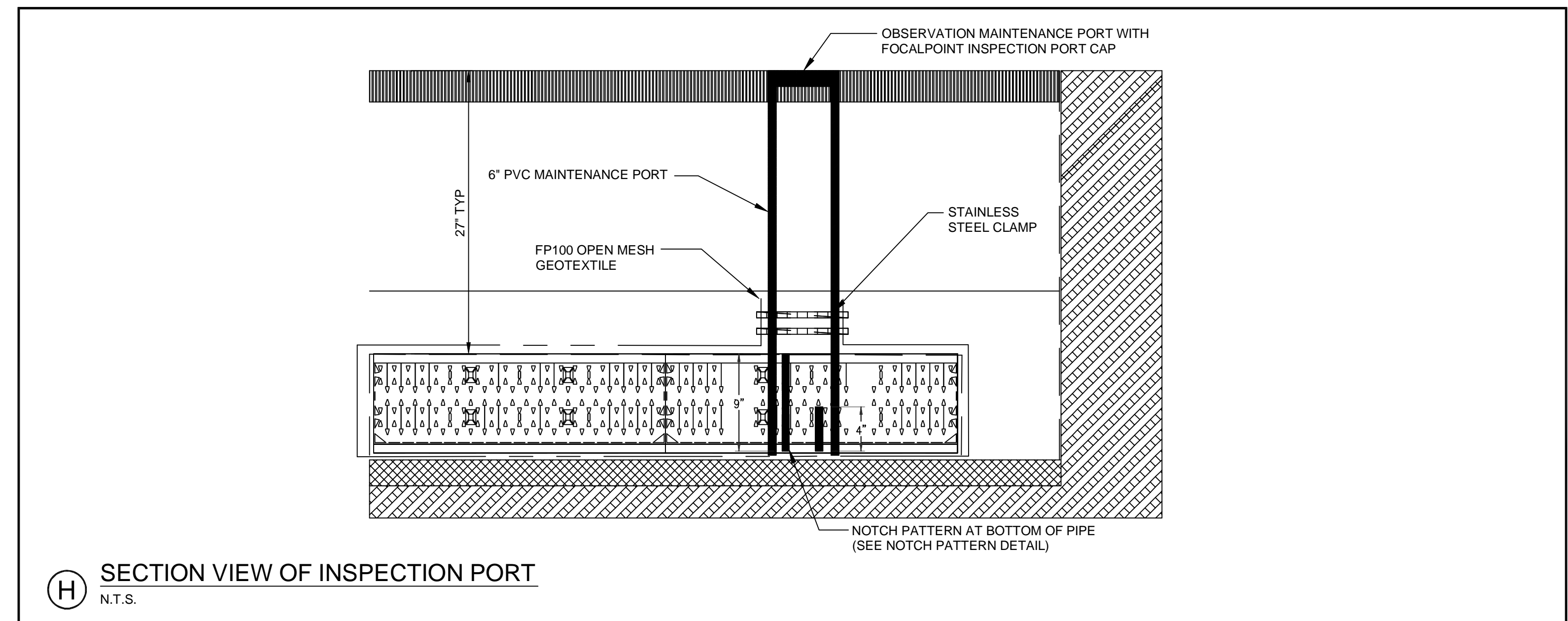
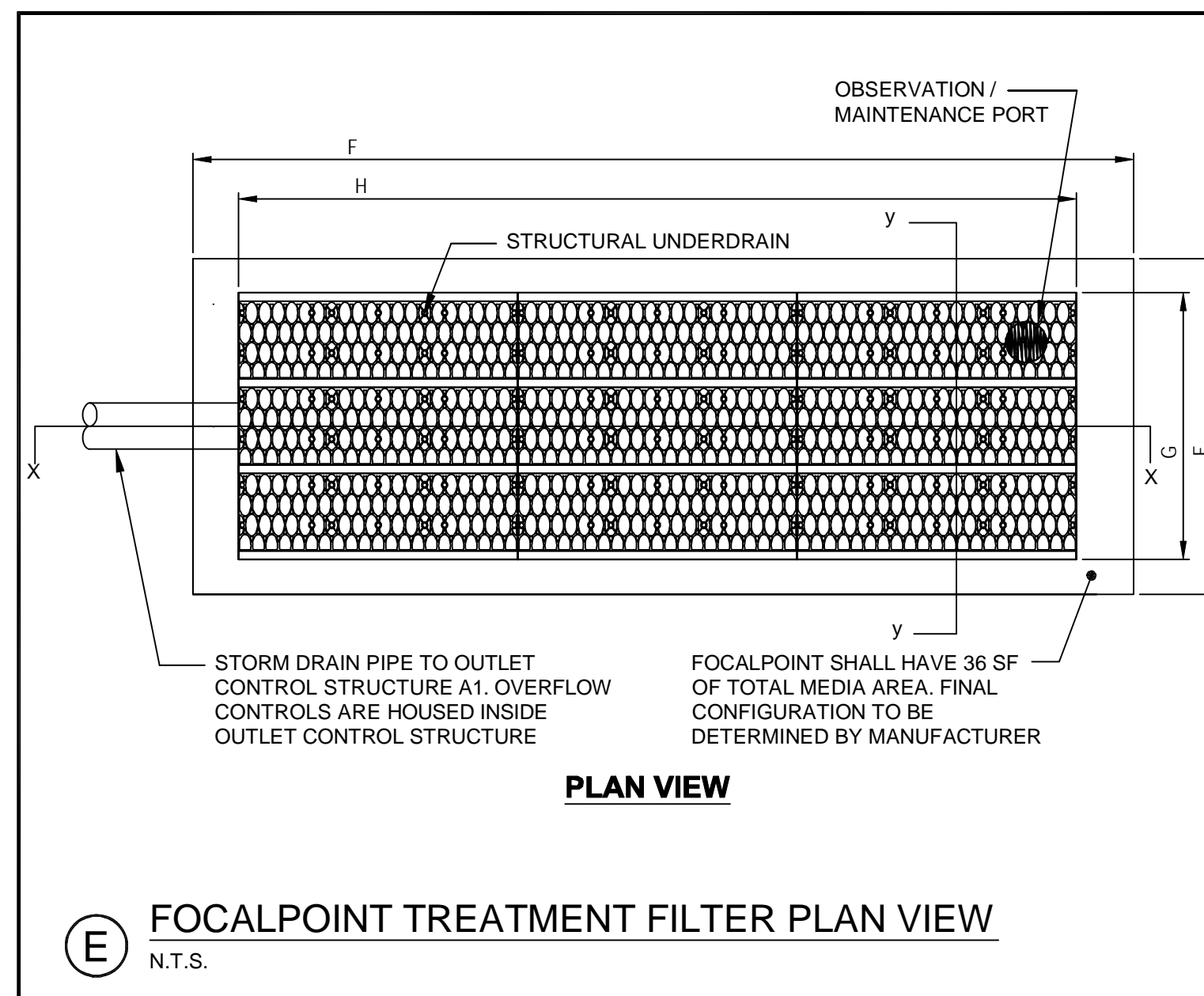
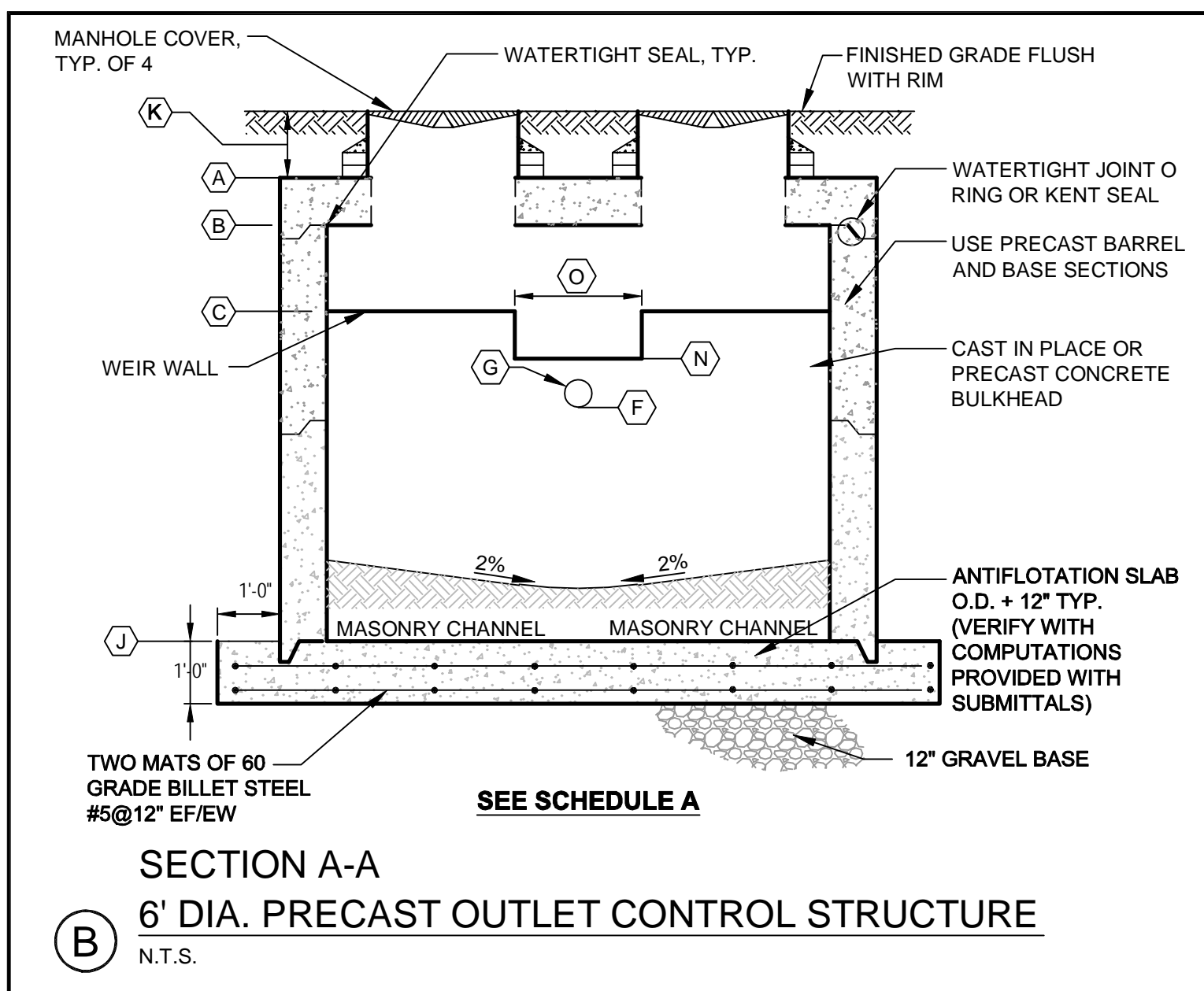
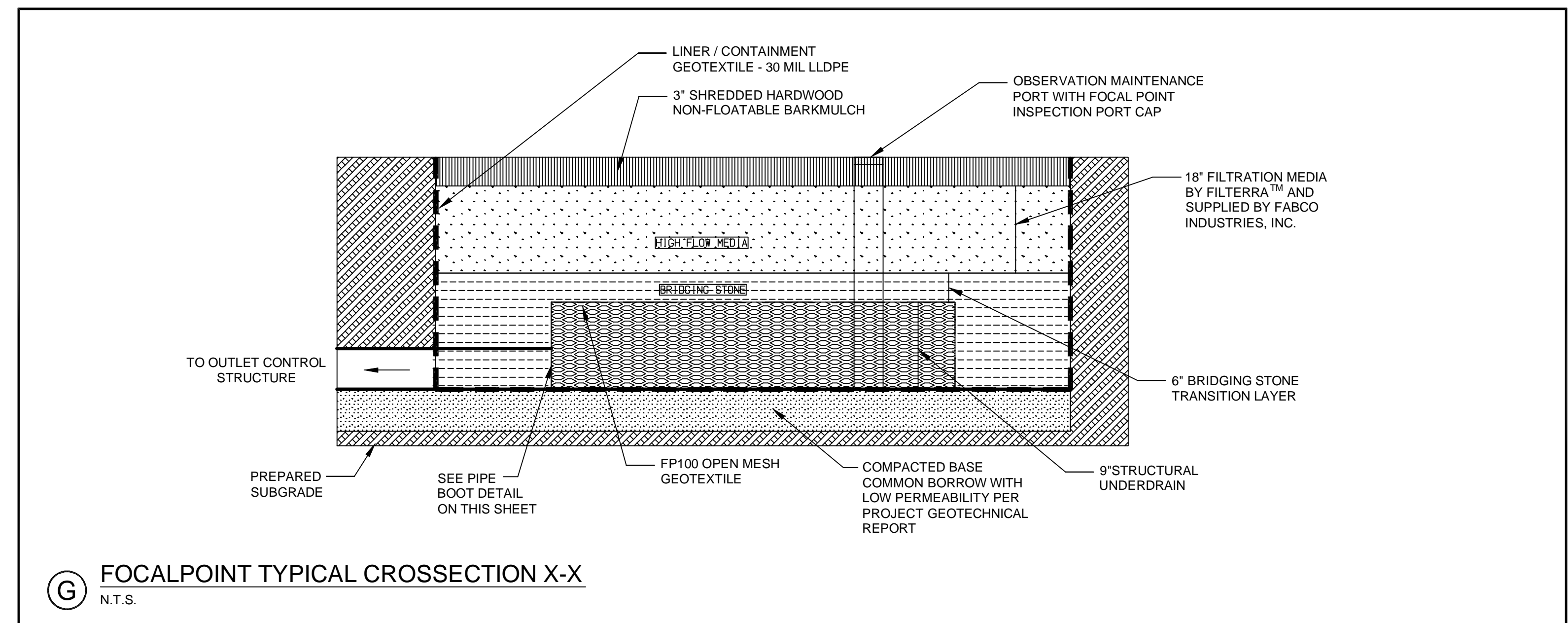


SCHEDULE A OUTLET CONTROL STRUCTURE	
ITEM DESCRIPTION	DIMENSION/ ELEVATION
(A) TOP OF STRUCTURE	92.63
(B) UNDERSIDE TOP SLAB	91.06
(C) TOP CONCRETE WEIR WALL	90.97
(D) WATER QUALITY VOLUME PIPE INVERT	85.42
(E) WATER QUALITY VOLUME PIPE DIAMETER *	6"
(F) WATER QUALITY ZONE ORIFICE INVERT	88.92
(G) WATER QUALITY ZONE ORIFICE DIAMETER	3"
(H) DIAMETER OF INLET PIPE FROM DET. ZONE	24"
(I) DIAMETER OF OUTLET PIPE	24"
(J) BOTTOM OF STRUCTURE	84.00
(K) RIM TO TOP OF STRUCTURE	0.83'
(L) DETENTION ZONE INLET INVERT	88.42
(M) OUTLET CONTROL STRUCTURE OUTLET INVERT	85.32
(N) DETENTION ZONE WEIR INVERT	90.50
(O) DETENTION ZONE WEIR WIDTH	1.5'

**(D) SCHEDULE 'A'**  
N.T.S.



			<b>PROJECT</b> <b>MULTI-USE DEVELOPMENT</b> 2282 CONGRESS ST., PORTLAND, ME		<b>FAY, SPOFFORD &amp; THORNDIKE</b> ENGINEERS - PLANNERS - SCIENTISTS 778 MAIN ST, SUITE 8, SOUTH PORTLAND, ME 04106	
<b>REVISIONS</b>			<b>SHEET TITLE</b> STORMWATER MANAGEMENT: FOCALPOINT FILTER DETAILS		DRAWN: CMW      DATE: OCTOBER 2013 DESIGNED: SRB      SCALE: N.T.S. CHECKED: SRB      JOB NO. 3118 FILE NAME: 3118-DET SHEET: C-9.1A	
1	08.06.14	ADDED SHEET FOR FOCALPOINT TREATMENT SYSTEM	CLIENT: CJ DEVELOPERS, INC. 35 PRIMROSE LANE, FREEPORT, MAINE 04032 AND PORTLAND PROPERTY HOLDINGS, LLC 2 MAIN STREET, SUITE 200, TOPSHAM, MAINE 04086			