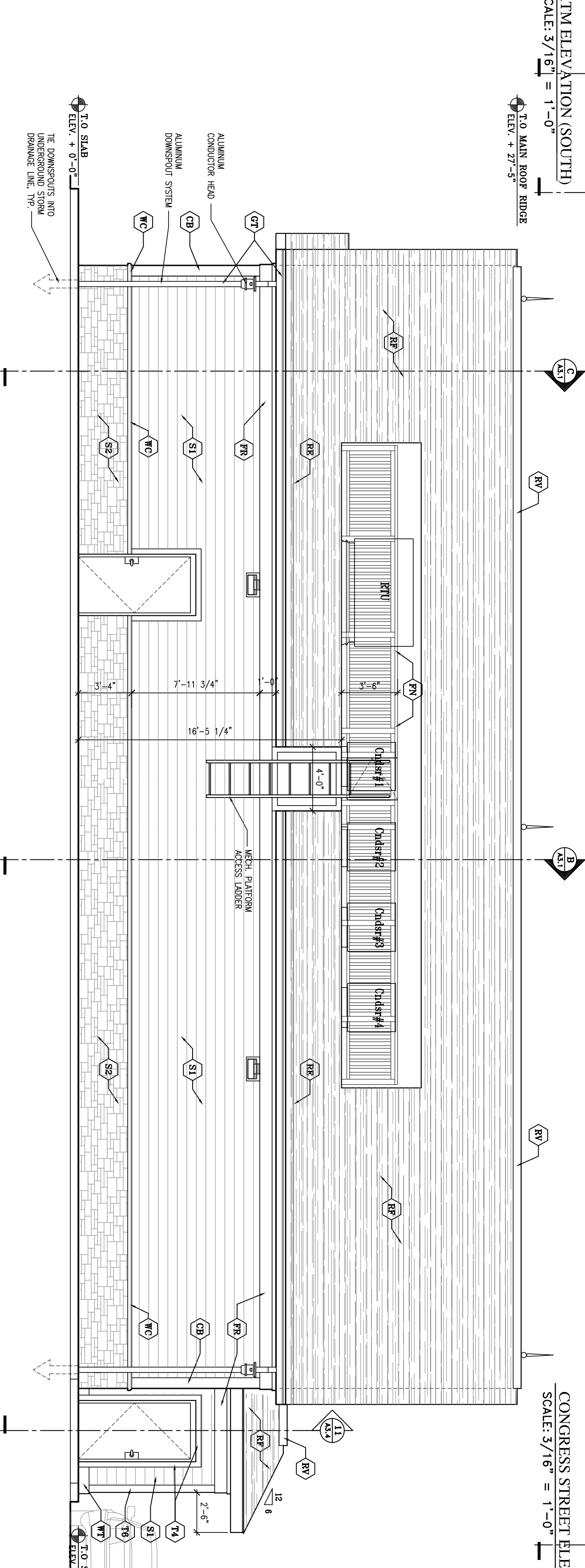
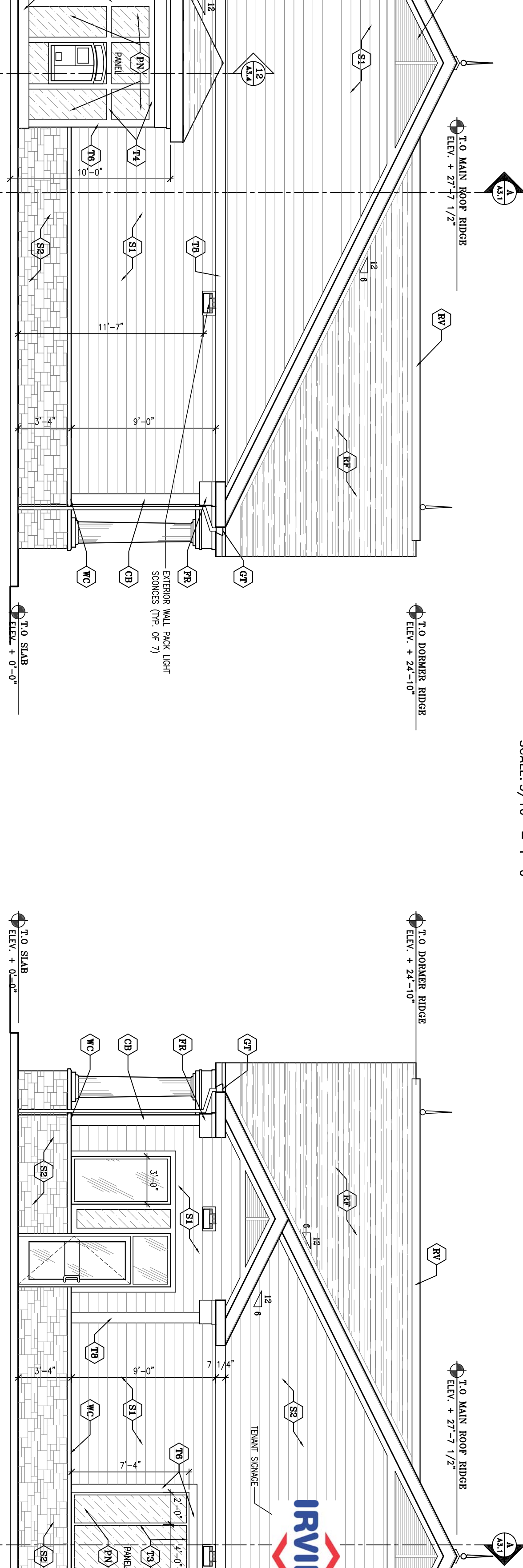
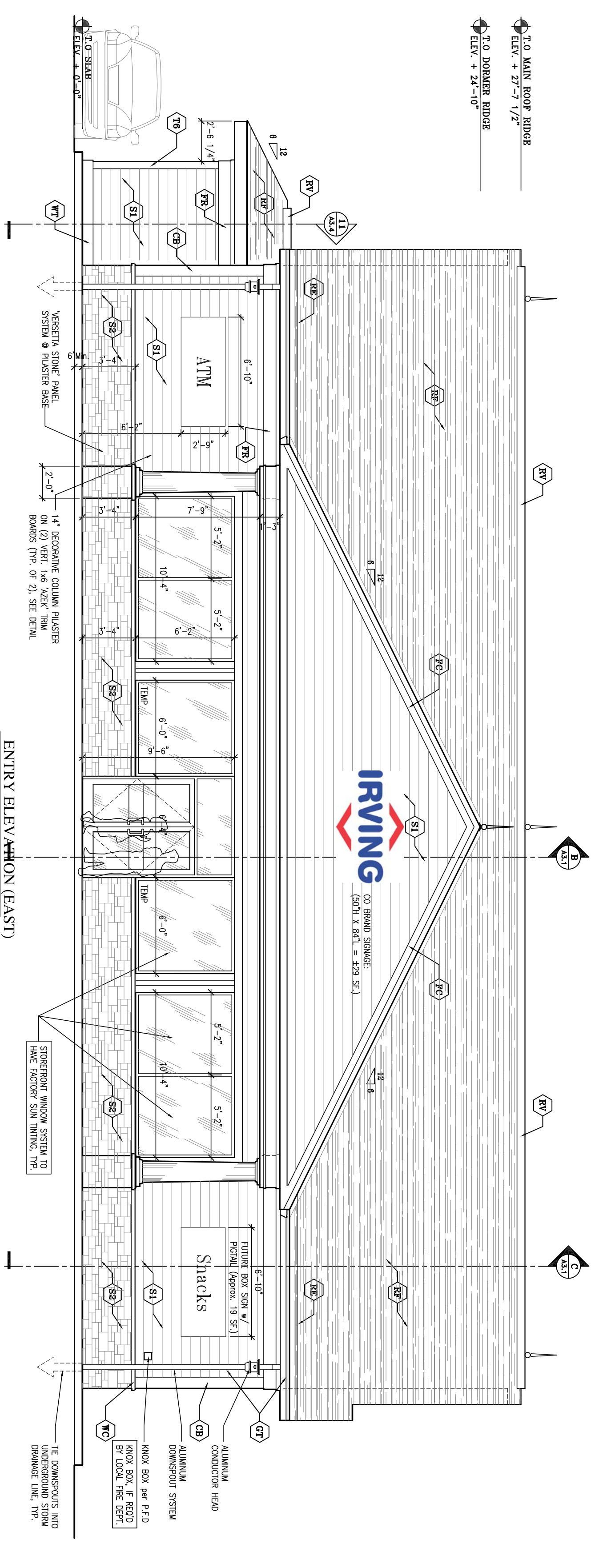


**MATERIAL LEGEND:**

(CB)	1/4" HARD-BRAND CORNER BOARDS	(RW)	TRUL SYSTEM ROOF ANCHOR w/ SPACER CAP, NEST SCREEN & 5' MINIMUM WIND UPLIFT
(CV)	2x4 ON 2x10 FLOOR w/ METAL CAP FLASHING	(S1)	7" TM HARD-FLANK STONE OVER TRIM® BUILDING BARRIER™
(DB)	PRE-FINISHED ALUM. DOME EOOD. TRP.	(S2)	VERSETTA STONE™ PANEL SYSTEM OVER TRIM® BUILDING BARRIER™
(DN)	1/4x2" WHITE INSULATOR COMPOSITE BALKING SYSTEM / WIND SCREEN	(T3)	1/4x2" X 2x4 TRIM BOARD w/ PRE-FINISHED ALUM. FLASHING @ ALL LEADS & VERTICAL TRIM BOARDS
(DR)	2x4 ON 2x10 FLOOR BOARDS w/ CONT. INSULATION	(T4)	1/4x2" X 2x4 TRIM BOARD w/ PRE-FINISHED ALUM. FLASHING @ ALL LEADS & VERTICAL TRIM BOARDS
(DS)	1/4x2" X 2x4 TRIM BOARD w/ PRE-FINISHED ALUM. FLASHING @ ALL LEADS & VERTICAL TRIM BOARDS	(T5)	1/4x2" X 2x4 TRIM BOARD w/ PRE-FINISHED ALUM. FLASHING @ ALL LEADS & VERTICAL TRIM BOARDS
(DT)	1/4x2" X 2x4 TRIM BOARD w/ PRE-FINISHED ALUM. FLASHING @ ALL LEADS & VERTICAL TRIM BOARDS	(T6)	1/4x2" X 2x4 TRIM BOARD w/ PRE-FINISHED ALUM. FLASHING @ ALL LEADS & VERTICAL TRIM BOARDS
(DW)	1/4x2" X 2x4 TRIM BOARD w/ PRE-FINISHED ALUM. FLASHING @ ALL LEADS & VERTICAL TRIM BOARDS	(T7)	1/4x2" X 2x4 TRIM BOARD w/ PRE-FINISHED ALUM. FLASHING @ ALL LEADS & VERTICAL TRIM BOARDS
(DX)	1/4x2" X 2x4 TRIM BOARD w/ PRE-FINISHED ALUM. FLASHING @ ALL LEADS & VERTICAL TRIM BOARDS	(T8)	1/4x2" X 2x4 TRIM BOARD w/ PRE-FINISHED ALUM. FLASHING @ ALL LEADS & VERTICAL TRIM BOARDS
(DY)	1/4x2" X 2x4 TRIM BOARD w/ PRE-FINISHED ALUM. FLASHING @ ALL LEADS & VERTICAL TRIM BOARDS	(T9)	1/4x2" X 2x4 TRIM BOARD w/ PRE-FINISHED ALUM. FLASHING @ ALL LEADS & VERTICAL TRIM BOARDS
(DZ)	1/4x2" X 2x4 TRIM BOARD w/ PRE-FINISHED ALUM. FLASHING @ ALL LEADS & VERTICAL TRIM BOARDS	(T0)	1/4x2" X 2x4 TRIM BOARD w/ PRE-FINISHED ALUM. FLASHING @ ALL LEADS & VERTICAL TRIM BOARDS



**ALPHAarchitects**  
 17 CHESTNUT STREET  
 PORTLAND, ME 04101  
 PHONE: 207.761.9500  
 FAX: 207.761.9595  
 design@alphaarchitects.com

**COPYRIGHT**  
 No reproduction of the contents of this document is permitted without written permission of ALPHA ARCHITECTS

**PRELIMINARY:  
 NOT FOR  
 CONSTRUCTION**

**Portland Property Holdings LLC**  
 2282 Congress Street  
 Portland, ME. 04101

JOB: 12132

ISSUE DATE	DESCRIPTION
PRELIM 03-27-13	P BOARD
SFMO	-
CDS	-
REV. 1	-
PRINT	08-28-14

EXTERIOR ELEVATIONS  
**D-1**

08-28-14