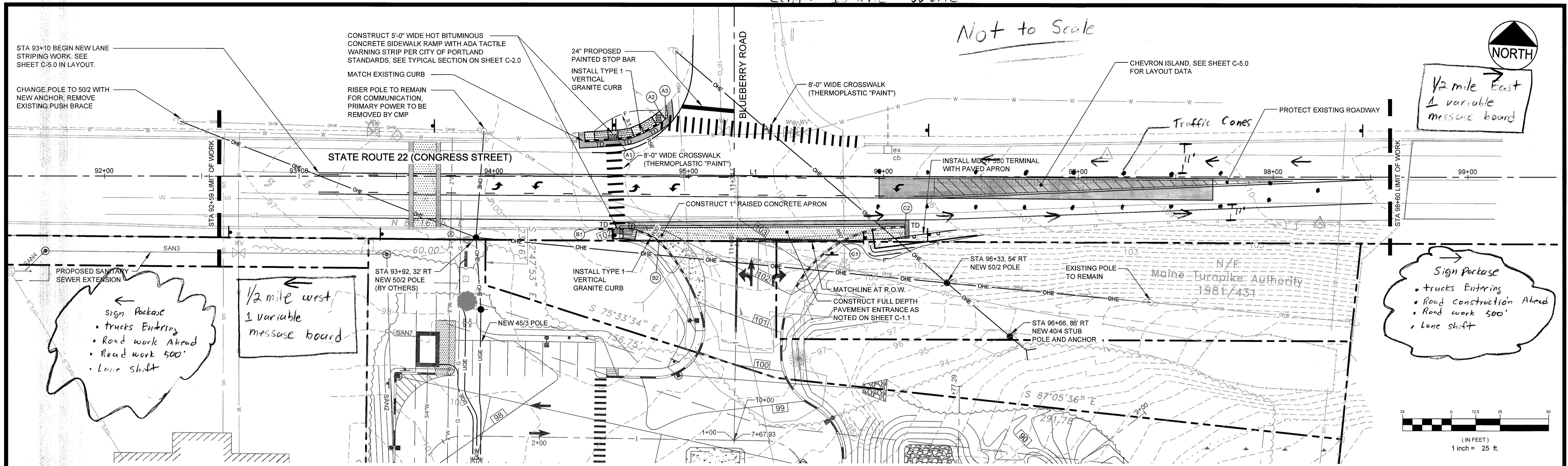


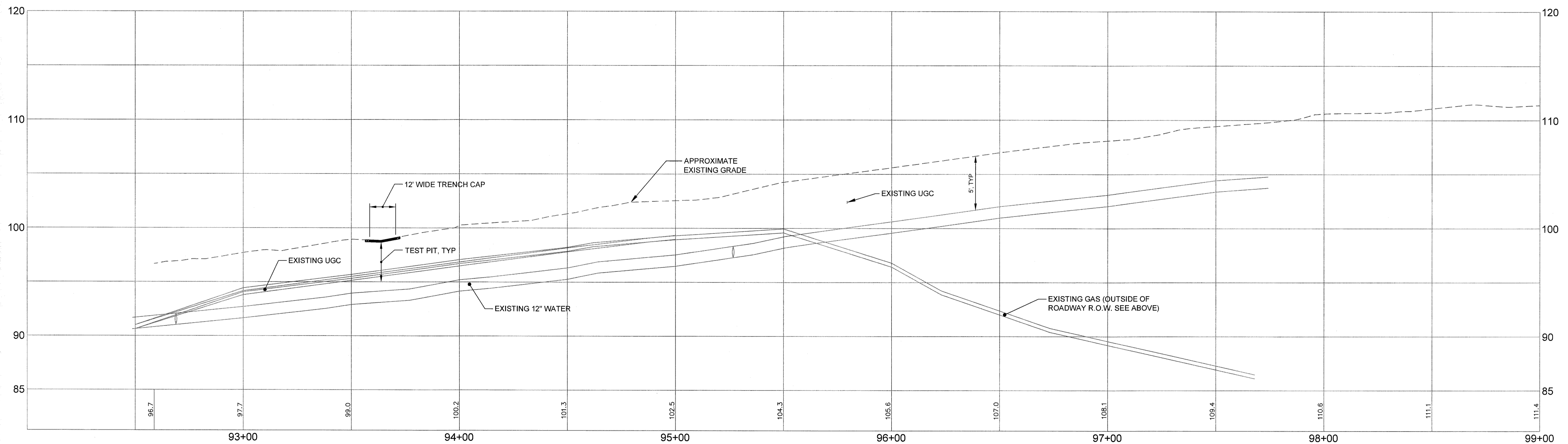
Center Island Work

Not to Scale



STATE ROUTE 22 (CONGRESS STREET) PLAN

SCALE: 1" = 25'



STATE ROUTE 22 (CONGRESS STREET) PROFILE

SCALE: H: 1" = 25'; V: 1" = 5'

LEGEND

	PAVEMENT REMOVAL
	PAVEMENT GRIND

CURB LAYOUT TABLE

ID	STATION	OFFSET
A1	94+63.8	18.79' L
A2	94+85.1	33.29' L
A3	94+88.1	29.28' L
B1	94+53.8	26.25' R
B2	94+84.9	32.85' R
C1	95+77.5	33.14' R
C2	96+11	25.16' R

PRELIMINARY - NOT FOR CONSTRUCTION

REV	DATE	DESCRIPTION	REVISIONS
3	08.08.14	SUBMITTED TO CITY OF PORTLAND	
2	07.22.14	SUBMITTED TO CITY OF PORTLAND AND MDOT	
1	07.10.13	SUBMITTED TO UTILITY COMPANIES FOR REVIEW	

P.E. BO KENNEDY
LIC. # 11994

PROJECT	STATE ROUTE 22 (CONGRESS STREET) TURN LANE EXTENSION PROJECT 2282 CONGRESS STREET, PORTLAND, ME
SHEET TITLE	GENERAL IMPROVEMENTS PLAN AND PROFILE
CLIENT	PORTLAND PROPERTY HOLDINGS, LLC 2 MAIN STREET, SUITE 200, TOPSHAM, MAINE 04086

<b>FST</b>	<b>FAY, SPOFFORD &amp; THORNDIKE</b> ENGINEERS • PLANNERS • SCIENTISTS 778 MAIN ST, SUITE 8, SOUTH PORTLAND, ME 04106
DRAWN: CMW	DATE: JUNE 2013
DESIGNED: BEK	SCALE: AS NOTED
CHECKED: SRB	JOB NO: 3118.01
FILE NAME: 3118.01-PLAN PROFILE	SHEET: C-4.0