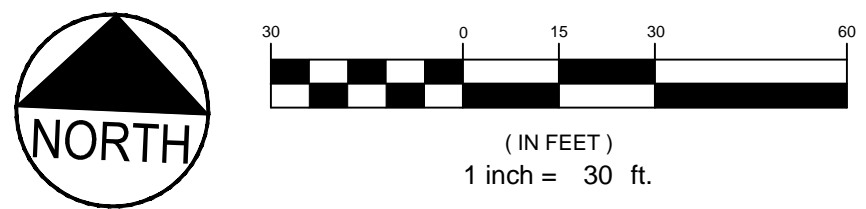


- NOTES:**
- ALL RUNOFF FROM DISTURBED AREAS SHALL BE DIRECTED TO A FILTERING DEVICE DESIGNATED TO LIMIT TURBID DISCHARGE. THE FILTERING DEVICE MAY BE BUT IS NOT LIMITED TO SAND FILTERS, EROSION CONTROL MIX, STRAW WATTLES, FLOCCULATION CHEMICALS, DIRT GLUE AND SILT FENCE.
 - STOCKPILES TO BE TEMPORARILY SEEDED AND MULCHED OR COVERED WITH POLY SHEETING AS REQUIRED BY THE PROJECT SPECIFICATIONS.
 - THE CONTRACTOR SHALL TREAT DISTURBED AREAS, BUILDING AREAS, AND CONSTRUCTION HAUL PATHS WITH DUST CONTROL BMPs TO LIMIT ALL FUGITIVE DUST PER THE PROJECT SPECIFICATIONS.
 - THE EROSION AND SEDIMENT CONTROL MEASURES DEPICTED ON THIS PLAN ARE CONSIDERED TO BE THE MINIMUM REQUIREMENTS. THE CONTRACTOR IS RESPONSIBLE TO MANAGE, INSPECT AND PROTECT THE SITE USING MEDEP BEST MANAGEMENT PRACTICES FOR EROSION AND SEDIMENT CONTROL AS REQUIRED BY THE PROJECT SPECIFICATIONS AND THE EROSION AND SEDIMENT CONTROL REPORT. THIS MAY REQUIRE ADDITIONAL EROSION AND SEDIMENT CONTROL MEASURES NOT DEPICTED ON THIS PLAN WHICH ARE CONSIDERED INCIDENTAL TO THE CONTRACT AND WILL BE IMPLEMENTED AT NO ADDITIONAL COST TO THE OWNER.
 - ALL CATCH BASIN INLETS WITH TRIBUTARY AREA WITH PAVEMENT COVER SHALL HAVE AN OIL ABSORBENT BOOM INSTALLED PRIOR TO THE PLACEMENT OF ANY BINDER PAVEMENT.

SCHEDULE OF SILT BARRIER REQUIREMENTS

SILT BARRIER*	TYPE PURPOSE	TIME OF INSTALLATION
SB1	CONDITION 1 SILT BARRIER TO TRAP SEDIMENT ALONG THE GRADING EDGE WHERE THE NEW CONTOURS NEARLY PARALLEL THE EXISTING CONTOURS	AT INITIAL SITE PREPARATION; PRIOR TO OTHER WORK
SB2	CONDITION 2 SILT BARRIER TO TRAP SEDIMENT FROM THE WORK AREA; INSTALL IN SHORT SECTIONS PARALLEL TO EXISTING CONTOUR; TYPICALLY OCCURS WHERE PROPOSED AND EXISTING CONTOURS FORM A 'V' SHAPE.	AT INITIAL SITE PREPARATION; PRIOR TO OTHER WORK
SB3	CONDITION 3 SILT BARRIER TO TRAP SEDIMENT ALONG THE BASE OF PROPOSED CONTOURS; TYPICALLY IN CUT AREAS. TO TRAP SEDIMENT ON NEWLY GRADED CUT OR FILL SLOPE. INSTALL PARALLEL TO THE PROPOSED CONTOUR AT VERTICAL SPACING SPECIFIED BY MANUFACTURER	DURING CONSTRUCTION AFTER NEW GRADE IS SHAPED. TIME SHALL BE MINIMIZED BETWEEN WORK IN AREA AND SHAPING NEW GRADE TO ALLOW SILT BARRIER TO BE INSTALLED.

* PRODUCT SUBMITTAL APPROVAL REQUIRED PRIOR TO INSTALLATION. SILT BARRIER MAY CONSIST OF AN APPROVED PRODUCT INTENDED TO RETAIN SEDIMENT IN THE CONTAINMENT AREA INCLUDING BUT NOT LIMITED TO SILT FENCE, FILTREXX SOXX, WOOD MULCH COMPOST BERM, STRAW WATTLES, ETC. ALL MEASURES SHALL BE SIZED, INSTALLED AND MAINTAINED PER THE MANUFACTURERS RECOMMENDATIONS.



LEGEND

- INLET PROTECTION (SILT SACKS AND SURFACE SEDIMENT BARRIER)
- CURLEX BLANKET IN V-NOTCH CHANNELS
- SLOPES > 10% WITH EROSION CONTROL MESH
- SLOPES > 3:1 WITH REINFORCED TURF
- SLOPES > 2:1 WITH RIPRAP SLOPE PROTECTION

REV	DATE	DESCRIPTION	REV	DATE	DESCRIPTION
10	08.03.15	FINAL PLANS ISSUED TO CITY OF PORTLAND, ISSUED FOR CONSTRUCTION	6	07.22.14	REVISED EROSION CONTROL AND SUBMITTED AMENDED PLANS TO CITY AND MEDEP
9	07.31.15	ADDED LANDSCAPE ISLAND PER CITY ARBORIST	5	05.21.13	ELIMINATED ONE STORMTREAT AND SUBMITTED CITY APPROVED PLANS TO MEDEP
8	04.21.15	REVISED PER NEW LAYOUT	4	05.03.13	REVISED AND RESUBMITTED TO CITY
7	08.07.14	REVISED PER CITY COMMENTS AND VALUE ENGINEERING	3	04.18.13	REVISED PER CITY STAFF COMMENTS
			2	04.09.13	SUBMITTED TO MEDEP STORMWATER DISCHARGE PERMIT
			1	03.28.13	SUBMITTED TO CITY OF PORTLAND

STATE OF MAINE
STEPHEN R. BUSHEY
LICENSED PROFESSIONAL ENGINEER
LIC. # 7429

PROJECT: MULTI-USE DEVELOPMENT
2282 CONGRESS ST., PORTLAND, ME
SHEET TITLE: EROSION AND SEDIMENT CONTROL PLAN
CLIENT: CJ DEVELOPERS, INC.
35 PRIMROSE LANE, FREEPORT, MAINE 04032
AND PORTLAND PROPERTY HOLDINGS, LLC
2 MAIN STREET, SUITE 200, TOPSHAM, MAINE 04086

FST 100 YEARS
FAY, SPOFFORD & THORNDIKE
ENGINEERS • PLANNERS • SCIENTISTS
778 MAIN ST., SUITE 8, SOUTH PORTLAND, ME 04106

DRAWN: CMW DATE: OCTOBER 2013
DESIGNED: SRB SCALE: 1" = 30'
CHECKED: SRB JOB NO. 3118
FILE NAME: 3118-SP
SHEET C-6.0