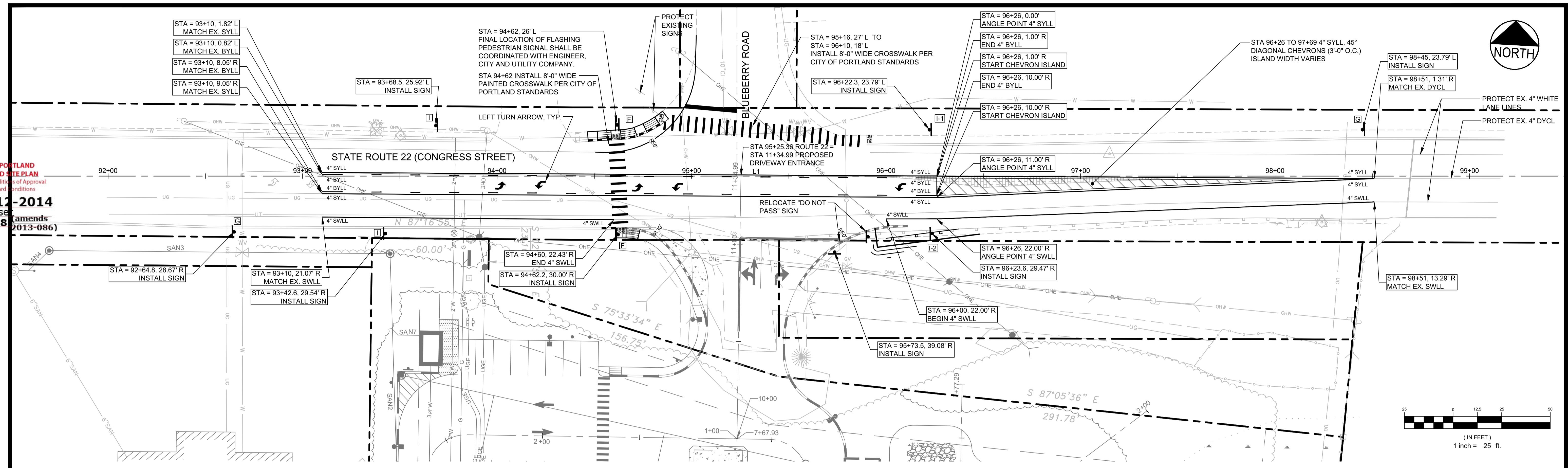


CITY OF PORTLAND
 APPROVED SITE PLAN
 Subject to Conditions of Approval
 and Standard Conditions
 DATE OF APPROVAL: 11-12-2014
 PLANNER: Jean Frase
 PROJECT NO: 2014-138
 Amends (2013-086)



STATE ROUTE 22 (CONGRESS STREET) PLAN

SCALE: 1" = 25'

SIGN LEGEND

RECTANGULAR RAPID FLASHING PEDESTRIAN CROSSING ASSEMBLY, SEE SHEET C-2.0 FOR DETAILS				
	AHEAD	ONLY	BEGIN	END
	36" x 36" 24" x 12"	24" x 36"	24" x 36" 24" x 12"	24" x 36" 24" x 12"
	F	G	I-1	I-2

REV	DATE	DESCRIPTION	P.E. BO KENNEDY
5	10.27.14	ADDED TACTILE WARNING STRIP AND R.O.W. LINE PER CITY COMMENTS	LIC. # 11994
4	08.13.14	SUBMITTED TO CITY OF PORTLAND	
3	08.08.14	SUBMITTED TO CITY OF PORTLAND	
2	07.22.14	SUBMITTED TO CITY OF PORTLAND AND MDOT	
1	07.10.13	SUBMITTED TO UTILITY COMPANIES FOR REVIEW	

PROJECT	STATE ROUTE 22 (CONGRESS STREET) TURN LANE EXTENSION PROJECT 2282 CONGRESS STREET, PORTLAND, ME
SHEET TITLE	ROADWAY LAYOUT, SIGNAGE AND STRIPING PLAN
CLIENT	PORTLAND PROPERTY HOLDINGS, LLC 2 MAIN STREET, SUITE 200, TOPSHAM, MAINE 04086

		FAY, SPOFFORD & THORNDIKE ENGINEERS · PLANNERS · SCIENTISTS 778 MAIN ST, SUITE 8, SOUTH PORTLAND, ME 04106	
DRAWN: CMW	DATE: JUNE 2013	CHECKED: SRB	JOB NO. 3118.01
DESIGNED: BEK	SCALE: AS NOTED	FILE NAME: 3118.01-PLAN PROFILE	
SHEET		C-5.0 OFF	