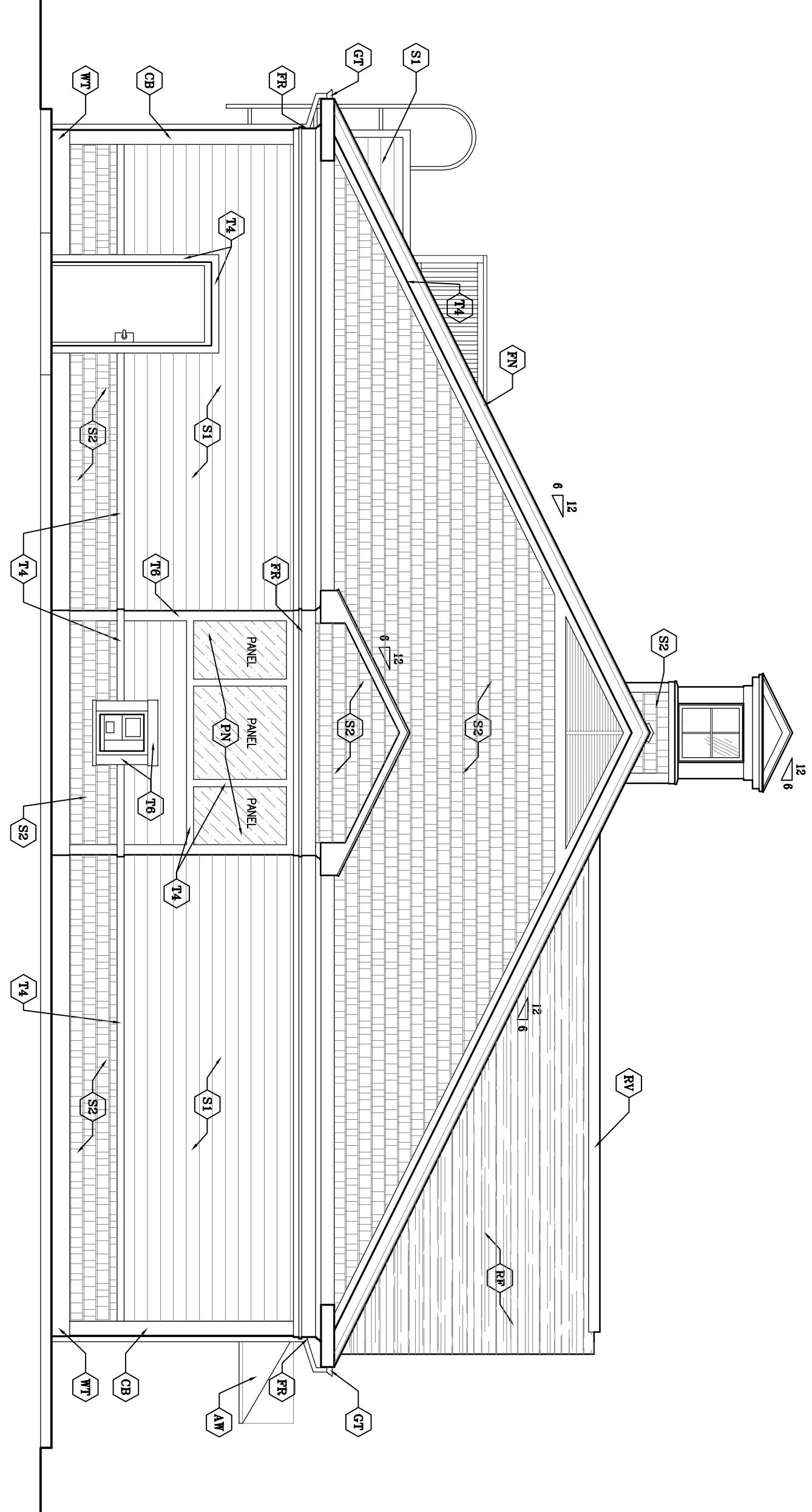
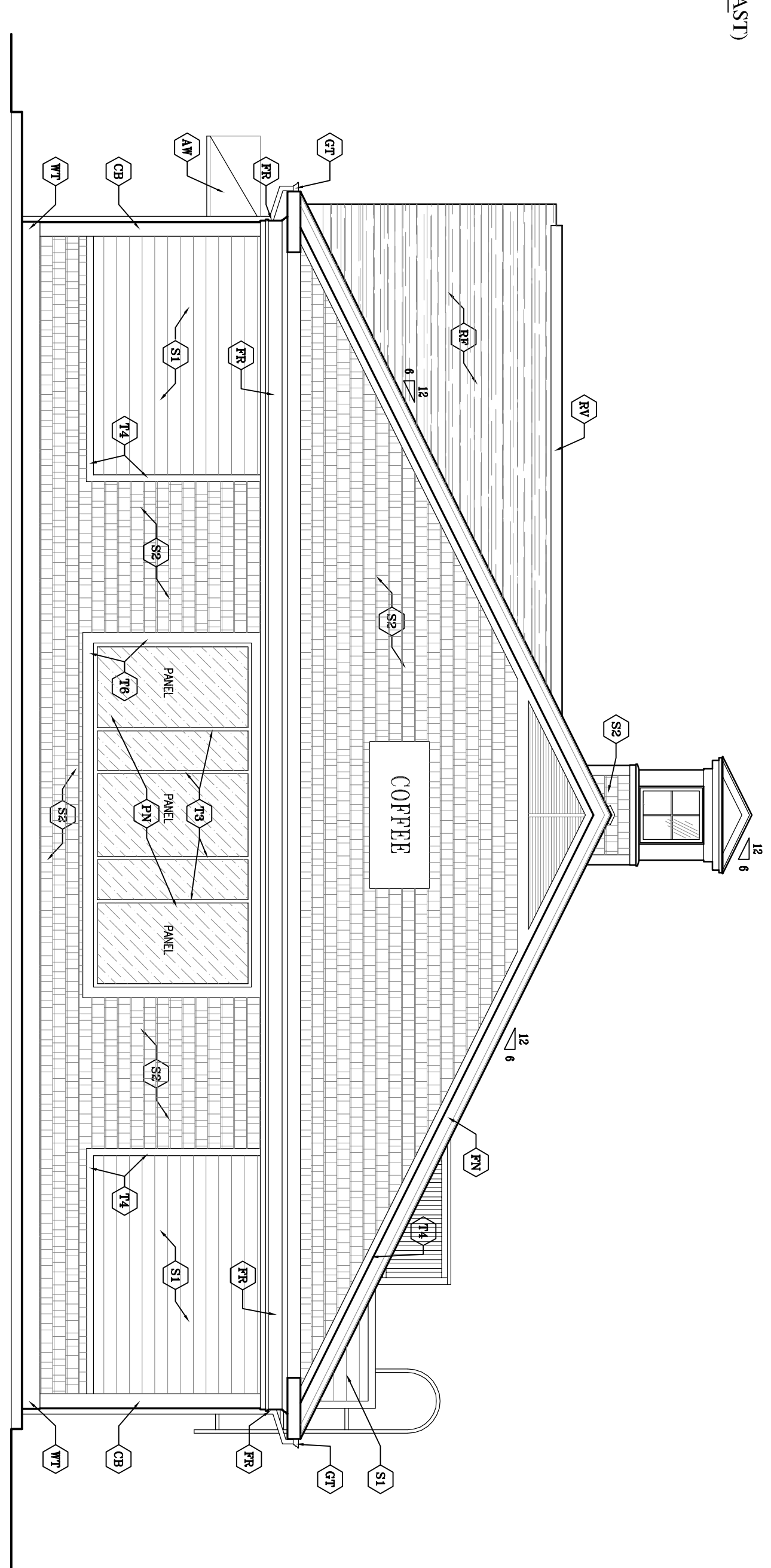


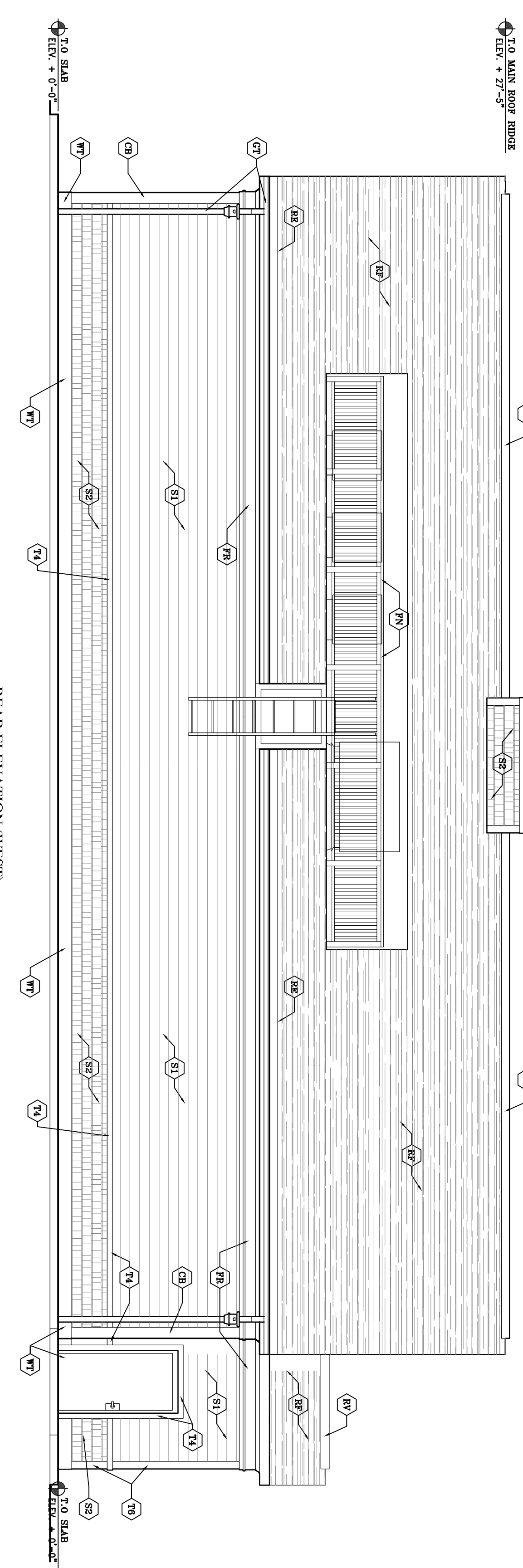
ENTRY ELEVATION (EAST)  
SCALE: 3/16" = 1'-0"



ATM ELEVATION (SOUTH)  
SCALE: 3/16" = 1'-0"



CONGRESS STREET ELEVATION (NORTH)  
SCALE: 3/16" = 1'-0"



REAR ELEVATION (WEST)  
SCALE: 3/16" = 1'-0"

**MATERIAL LEGEND:**

|      |   |      |  |
|------|---|------|--|
| (A1) | ALUM. FRAMED FABRIC AWNING  | (R1) | 7" TYP. "HARD-PAN" SIMC OVER TRAP*   |
| (A2) | 1/4" HARD-BRAND CORRUG BORDS  | (R2) | 1/2" AZEX RIM BORDS w/ PRE-FINISHED ALUM. FLASHING @ ALL ROADS & HORZ. TRAP BODIES |
| (A3) | 20" TYPICAL CORNICE / CORNICE w/ METAL CHAIR FLASHING                 | (R3) | 1/2" AZEX RIM BORDS w/ PRE-FINISHED ALUM. FLASHING @ ALL ROADS & HORZ. TRAP BODIES |
| (A4) | PRE-FINISHED ALUM. DWP EDGE TRP                                       | (R4) | 1/2" AZEX RIM BORDS w/ PRE-FINISHED ALUM. FLASHING @ ALL ROADS & HORZ. TRAP BODIES |
| (A5) | 4x4" WHITE TRUSLER COMPOSITE RAILING SYSTEM / HAND SCREEN             | (R5) | 1/2" AZEX RIM BORDS w/ PRE-FINISHED ALUM. FLASHING @ ALL ROADS & HORZ. TRAP BODIES |
| (A6) | 1/4" COMPOSITE FIBER BOARD, SEE SECTION/DETAIL DWP AS                 | (R6) | 1/2" AZEX RIM BORDS w/ PRE-FINISHED ALUM. FLASHING @ ALL ROADS & HORZ. TRAP BODIES |
| (A7) | 6" PRE-FINISHED ALUM. GUTTER SYSTEM ON ALUM. CLOS 1/4" RISA           | (R7) | 1/2" AZEX RIM BORDS w/ PRE-FINISHED ALUM. FLASHING @ ALL ROADS & HORZ. TRAP BODIES |
| (A8) | 3/8" PAINTED W/P FANLING OVER EXTERIOR BUILDING SHEATHING & V/S       | (R8) | 1/2" AZEX RIM BORDS w/ PRE-FINISHED ALUM. FLASHING @ ALL ROADS & HORZ. TRAP BODIES |
| (A9) | METAL EDGE IC CUTTER w/ HEAT TRAPE GUTTER & DWP SYSTEM TIED TO T-SIST | (R9) | 1/2" AZEX RIM BORDS w/ PRE-FINISHED ALUM. FLASHING @ ALL ROADS & HORZ. TRAP BODIES |

\*ORRANTED/ MATTERS STOWING NIGHT 30 TR

03-28-13



**ALPHAarchitects**  
17 CHESTNUT STREET  
PORTLAND, ME 04101  
PHONE: 207.761.9500  
FAX: 207.761.9595  
design@alpharchitects.com

**COPYRIGHT**  
Reuse or reproduction of the contents of this document is not permitted without written permission of ALPHA ARCHITECTS



**Portland Property Holdings LLC**  
2282 Congress Street  
Portland, ME. 04101

JOB: 12132

| ISSUE DATE | ISSUE DATE |
|------------|------------|
| PRELIM     | 03-27-13   |
| P BOARD    | -          |
| SFMO       | -          |
| CDS        | -          |
| REV. 1     | -          |
| PRINT      | 03-27-13   |

EXTERIOR ELEVATIONS  
**A1**