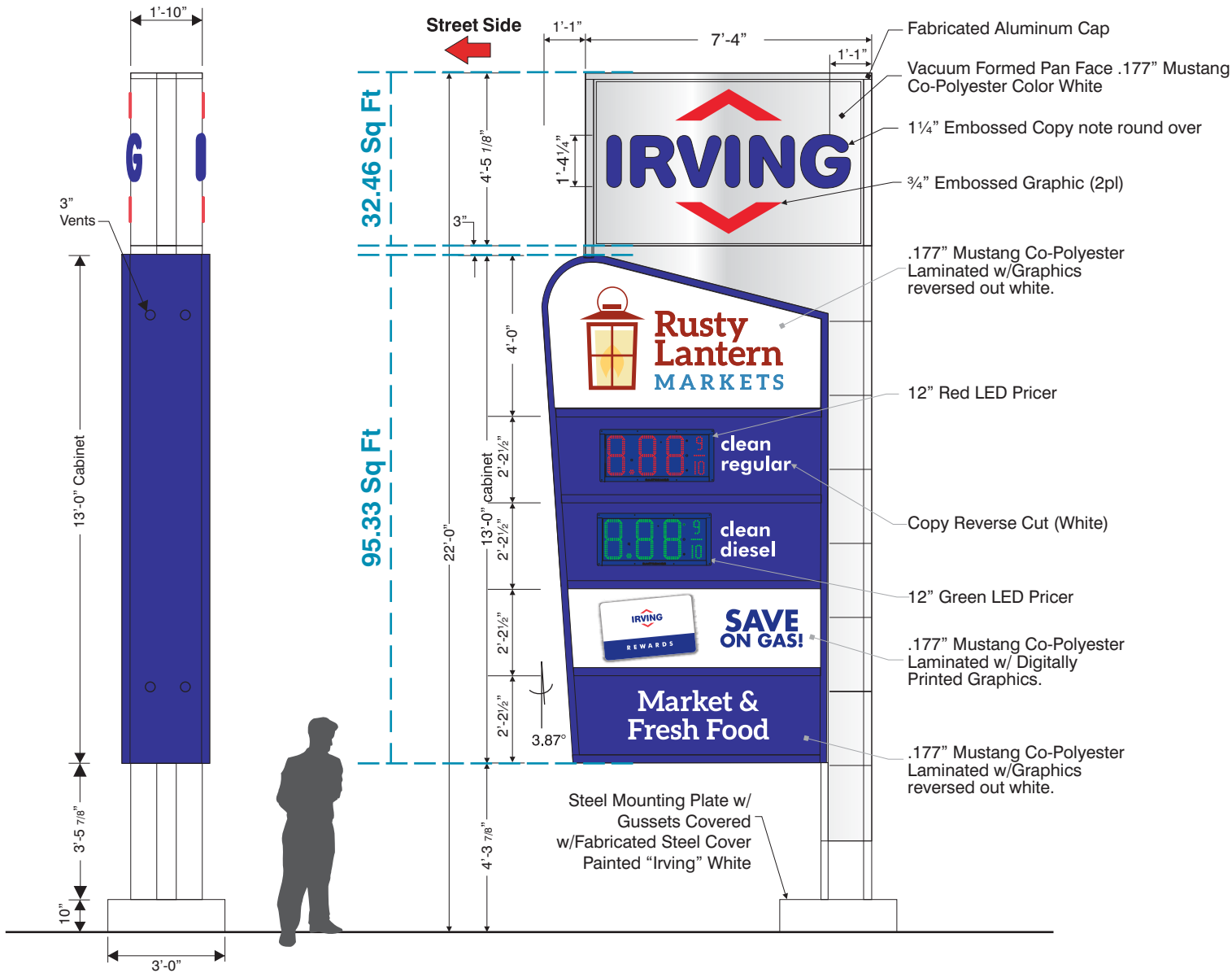


7ft SINGLE POLE HARP SIGN | OVERVIEW

PERMIT



O-1 | Main ID Overview
Scale | 1/4" = 1'-0"



Abc	Futura Hv BT
C1	Pantone 2746C Irving Blue
C2	Pantone 185C Irving Red

NOTE: COLORS AND PHOTOGRAPHIC PRESENTATIONS ON THIS DRAWING ARE FOR VISUAL AID ONLY. EXACT COLORS SHOULD BE OBTAINED THROUGH COLOR SWITCHES SUPPLIED UPON REQUEST.



DWG
Z:\Irving Oil\Locations\ME\
Portland\003514-2231\Design\
003514-2231_Permit Drawing.cdr

PR | 003514-2231

SF | X

Page
1 of 4



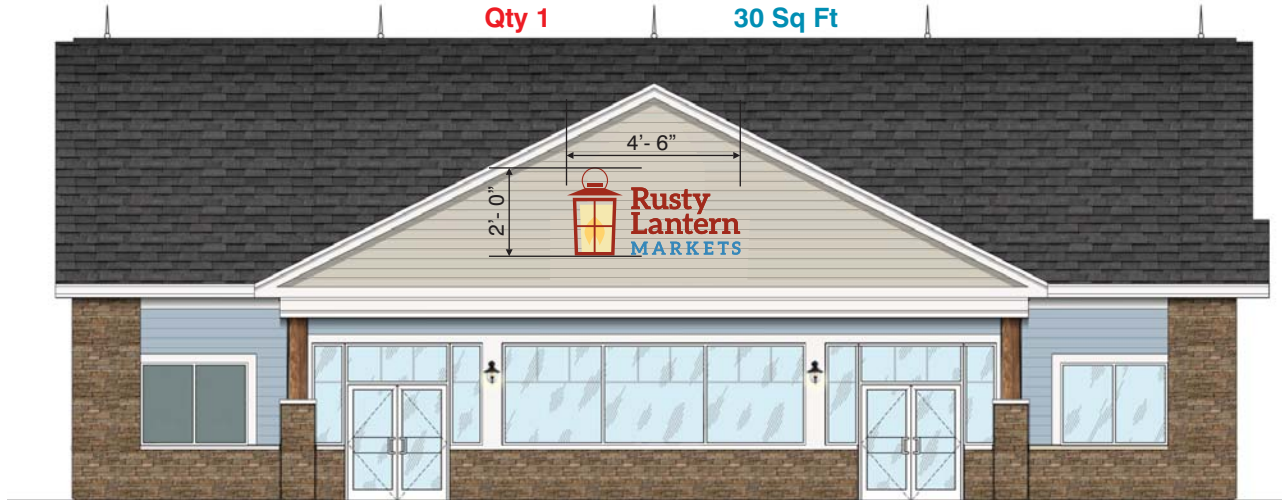
251 Boot Road
Downtown PA 19335
TEL 610.518.5881
FAX 610.518.5244
WWW info@prosign.net

Irving Oil
2282 Congress Street
Portland, ME

Copyright, Pro Sign Company, 2015
THIS DRAWING INCLUDES DATA THAT IS PROPRIETARY INFORMATION OF PRO SIGN COMPANY. IT SHALL NOT BE USED, DUPLICATED OR DISCLOSED IN WHOLE OR PART FOR ANY PURPOSE OTHER THAN TO EVALUATE THIS PROPOSAL. IF A CONTRACT IS AWARDED TO THIS PROPOSER AS A RESULT OF OR IN CONNECTION WITH THE SUBMISSION OF THIS DATA, THE DEFEREE SHALL HAVE THE RIGHT TO USE OR DISCLOSE THE DATA TO THE EXTENT PROVIDED IN THE RESULTING CONTRACT.

REV Design
5 PNO
Added Sq Footage
Callouts

PM By
JMA FXH
Date
10.23.15



Abc	Futura Hv BT
C1	Pantone 2746C Irving Blue
C2	Pantone 185C Irving Red

NOTE: COLORS AND PHOTOGRAPHIC PRESENTATIONS ON THIS DRAWING ARE FOR VISUAL AID ONLY. EXACT COLORS SHOULD BE OBTAINED THROUGH COLOR SWITCHES SUPPLIED UPON REQUEST.



O-1 | Main ID Overview
Scale | NTS



DWG
Z:\Irving Oil\Locations\ME\
Portland\003514-2231\Design\
003514-2231_Permit Drawing.cdr



251 Boot Road
Downingtown PA 19335
TEL 610.518.5881
FAX 610.518.5244
WWW info@prosign.net

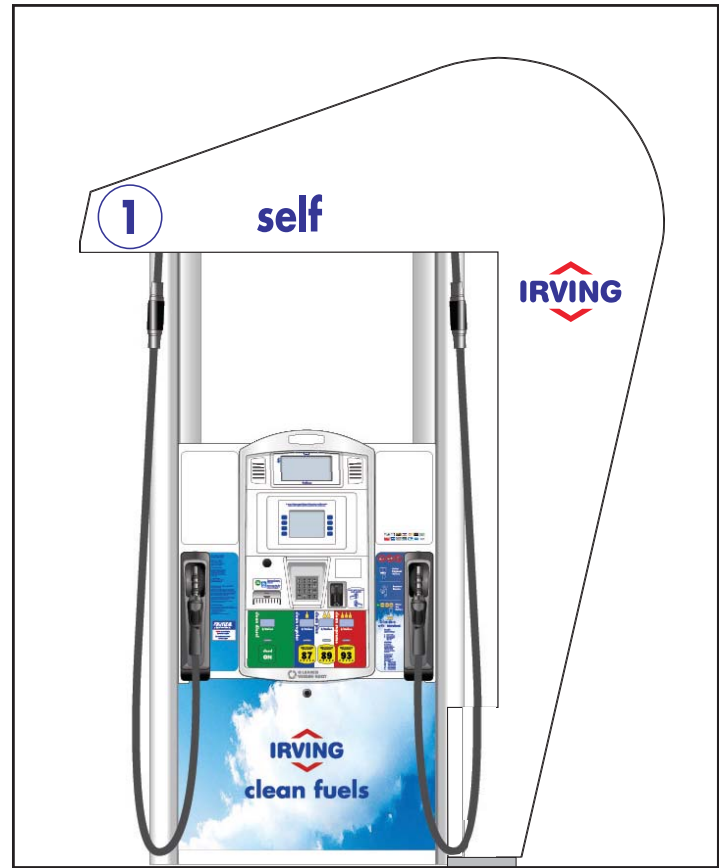
Irving Oil
2282 Congress Street
Portland, ME

Copyright, Pro Sign Company, 2015
THIS DRAWING INCLUDES DATA THAT IS PROPRIETARY INFORMATION OF PRO SIGN COMPANY. IT SHALL NOT BE USED, DUPLICATED OR DISCLOSED IN WHOLE OR PART FOR ANY PURPOSE OTHER THAN TO EVALUATE THIS PROPOSAL. IF A CONTRACT IS AWARDED TO THIS PROPOSER AS A RESULT OF OR IN CONNECTION WITH THE SUBMISSION OF THIS DATA, THE DEFEREEE SHALL HAVE THE RIGHT TO USE OR DISCLOSE THE DATA TO THE EXTENT PROVIDED IN THE RESULTING CONTRACT.

REV 5 | Design PNO
Corrected Sample Building and Sample Building Logo

PM By JMA FXH
Date 10.23.15

PR | 003514-2231
SF | X
Page 2 of 4



O-1 | Main ID Overview
Scale | NTS



Abc	Futura Hv BT	
C1	Pantone 2746C Irving Blue	C2 Pantone 185C Irving Red
<small>NOTE: COLORS AND PHOTOGRAPHIC PRESENTATIONS ON THIS DRAWING ARE FOR VISUAL AID ONLY. EXACT COLORS SHOULD BE OBTAINED THROUGH COLOR SWITCHES SUPPLIED UPON REQUEST.</small>		



DWG
Z:\Irving Oil\Locations\ME\
Portland\003514-2231\Design\
003514-2231_Permit Drawing.cdr

PR | 003514-2231

SF | X

Page
4 of 4



251 Boot Road
Downingtown PA 19335
TEL 610.518.5881
FAX 610.518.5244
WWW info@prosign.net

Irving Oil
2282 Congress Street
Portland, ME

Copyright, Pro Sign Company, 2015

THIS DRAWING INCLUDES DATA THAT IS PROPRIETARY INFORMATION OF PRO SIGN COMPANY. IT SHALL NOT BE USED, DUPLICATED OR DISCLOSED IN WHOLE OR PART FOR ANY PURPOSE OTHER THAN TO EVALUATE THIS PROPOSAL. IF A CONTRACT IS AWARDED TO THIS PROPOSER AS A RESULT OF OR IN CONNECTION WITH THE SUBMISSION OF THIS DATA, THE DEFEREE SHALL HAVE THE RIGHT TO USE OR DISCLOSE THE DATA TO THE EXTENT PROVIDED IN THE RESULTING CONTRACT.

REV 5 | Design PNO
Removed Excess
Images and Pump
Top Promo Frame

PM By
JMA FXH
Date
10.23.15