

ALPHAarchitects  
17 CHESTNUT STREET  
PORTLAND, ME 04101  
PHONE: 207.761.9500  
FAX: 207.761.9595  
design@alphaarchitects.com

**© COPYRIGHT**  
Reuse or reproduction of the contents of this document is not permitted without written permission of ALPHA ARCHITECTS

**FINAL FOR CONSTRUCTION**

**Portland Property Holdings LLC**  
2282 Congress Street  
Portland, ME. 04102

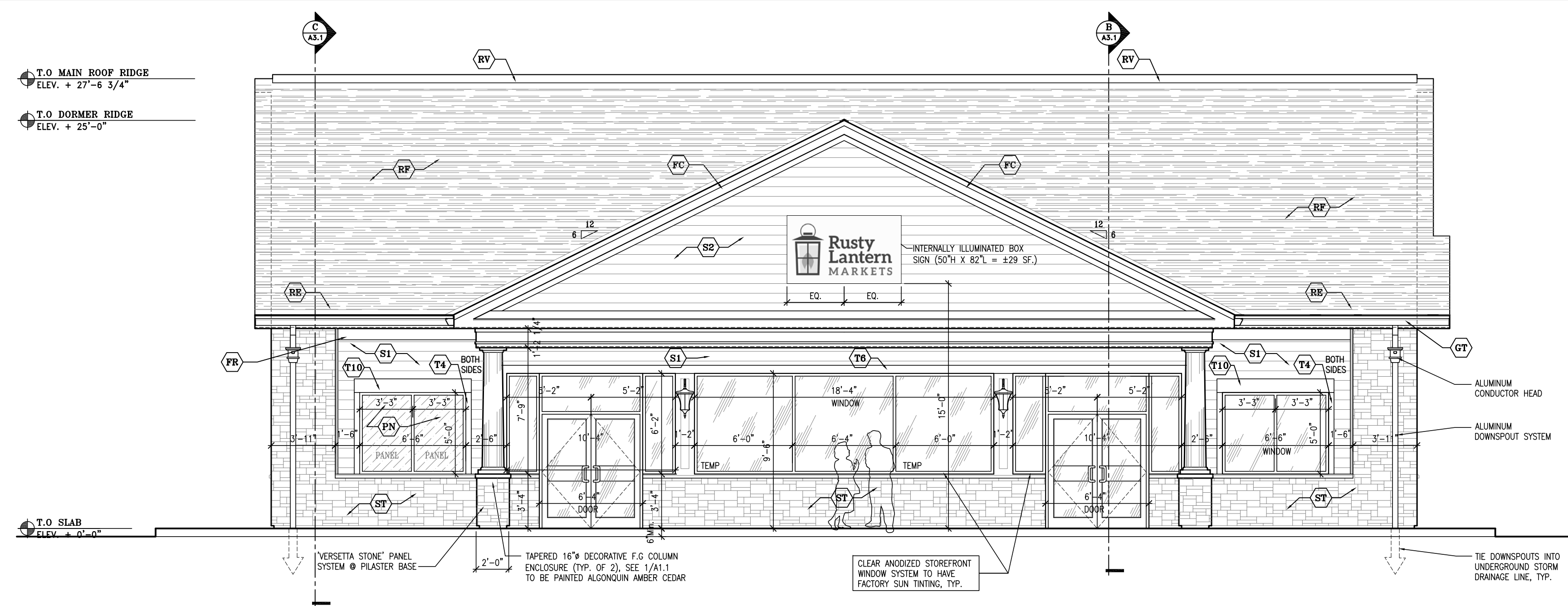
JOB: 12132

ISSUE DATE	
PRELIM	03-27-13
P BOARD	-
SFMO 2	10-16-15
CD's	-
REV. 1	10-16-15
PRINT	11-06-15

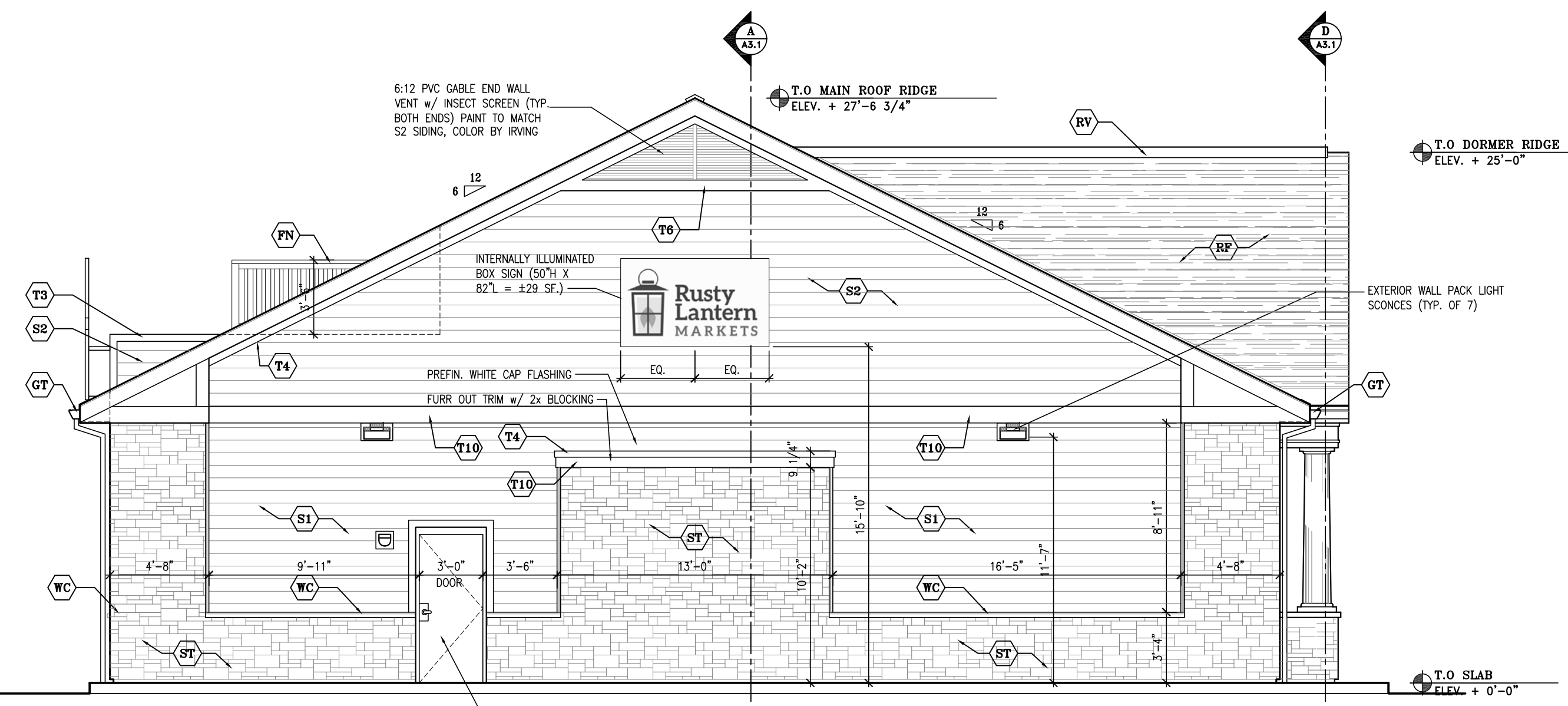
EXTERIOR ELEVATIONS  
**A2.1**

**MATERIAL LEGEND:**

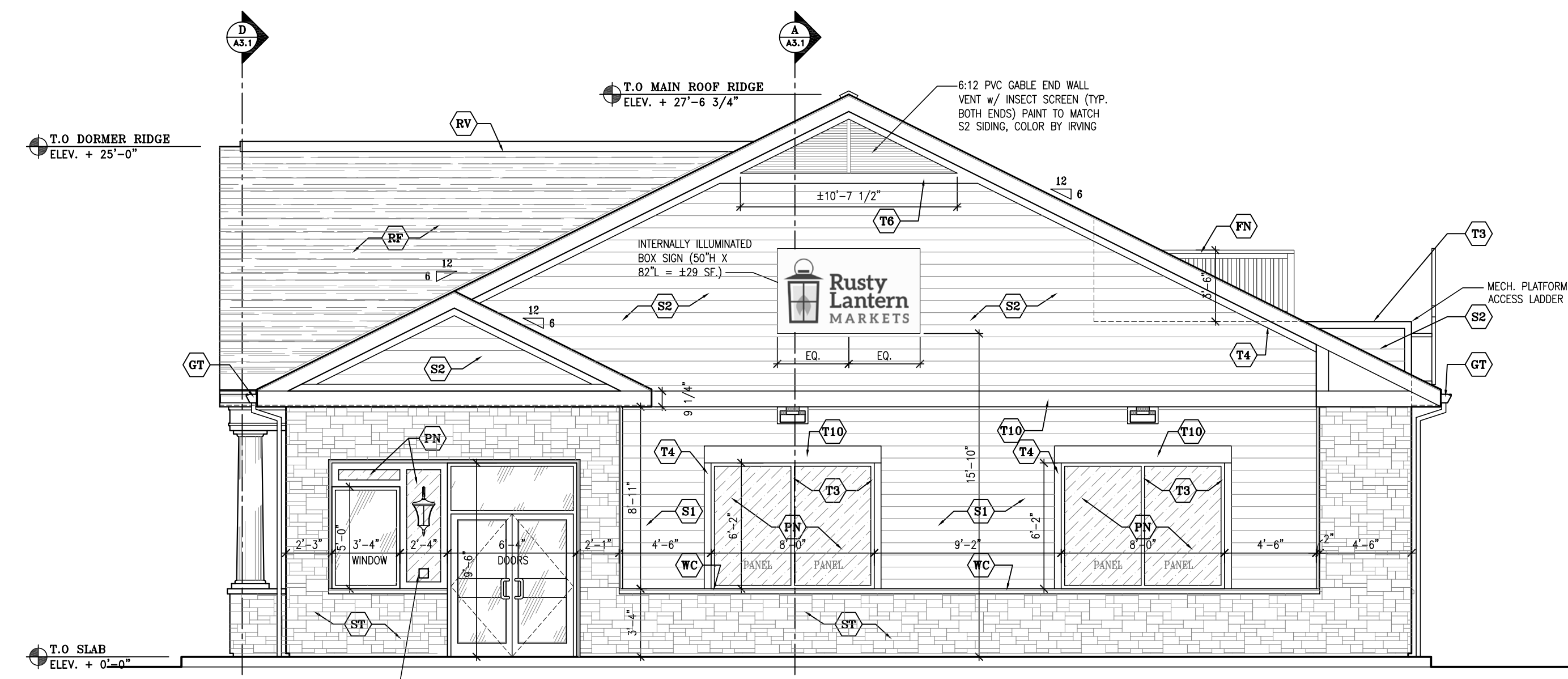
(CB) 1x8 MABEC CORNER BOARDS - 327 MOCCASIN	(RV) 'ROLL SCREEN' RIDGE AIR VENT w/ SHINGLE CAP, INSECT SCREEN & 3" THROAT Min., TYP.
(FC) 2x4 ON 2x10 FASCIA w/ METAL CAP FLASHING	(S1) 7" T1W MABEC SIDING OVER 'TYPAR' BUILDING WRAP, TYP. - ALGONQUIN AMBER CEDAR
(DR) PREFINISHED BROWN ALUM. DRIP EDGE, TYP.	(S2) 7" T1W MABEC SIDING OVER 'TYPAR' BUILDING WRAP, TYP. - SANDSTONE
(FN) +42" WHITE 'PRIMER' COMPOSITE RAILING SYSTEM / HVAC SCREEN, COLOR BY IRVING	(ST) 'VERSETTA STONE' PANEL SYSTEM OVER 'TYPAR' BUILDING WRAP, TYP.
(FR) 1x10 MABEC FRIEZE BOARD (327 MOCCASIN) w/ CONT. PRE-FINISHED ALUM. FLASHING (DARK BROWN)	(T3) 1x3 MABEC TRIM BOARD w/ PRE-FINISHED ALUM. FLASHING (WHITE) @ ALL HEADS & HORIZ. TRIM BOARDS - ULTRA WHITE
(GT) 6" PREFINISHED WHITE ALUM. GUTTER SYSTEM ON ALUM. CLAD 1x8 FASCIA - WHITE CUTTERS, BROWN DOWNSPOUTS. FINAL COLOR SELECTION BY IRVING	(T4) 1x4 MABEC TRIM BOARD w/ PRE-FINISHED ALUM. FLASHING (WHITE) @ ALL HEADS & HORIZ. TRIM BOARDS - ULTRA WHITE
(PN) 3/8" PAINTED MDO PANELING OVER EXTERIOR BUILDING SHEATHING & V.B. - COLOR TO BE DETERMINED	(T6) 1x6 MABEC TRIM BOARD w/ PRE-FINISHED ALUM. FLASHING (WHITE) @ ALL HEADS - ULTRA WHITE
(RE) METAL EDGE ICE CUTTER w/ HEAT TRACE GUTTER & EAVE SYSTEM TIED TO T-STAY	(T10) 1x10 MABEC TRIM BOARD w/ PRE-FINISHED ALUM. FLASHING (WHITE) @ ALL HEADS - ULTRA WHITE
(RF) CAF TIMBERLINE HD, COLOR: BARKWOOD OR APPROVED EQUAL. C.C. TO VERIFY w/ OWNER	(WC) 'VERSETTA STONE' WANSOFT CAP



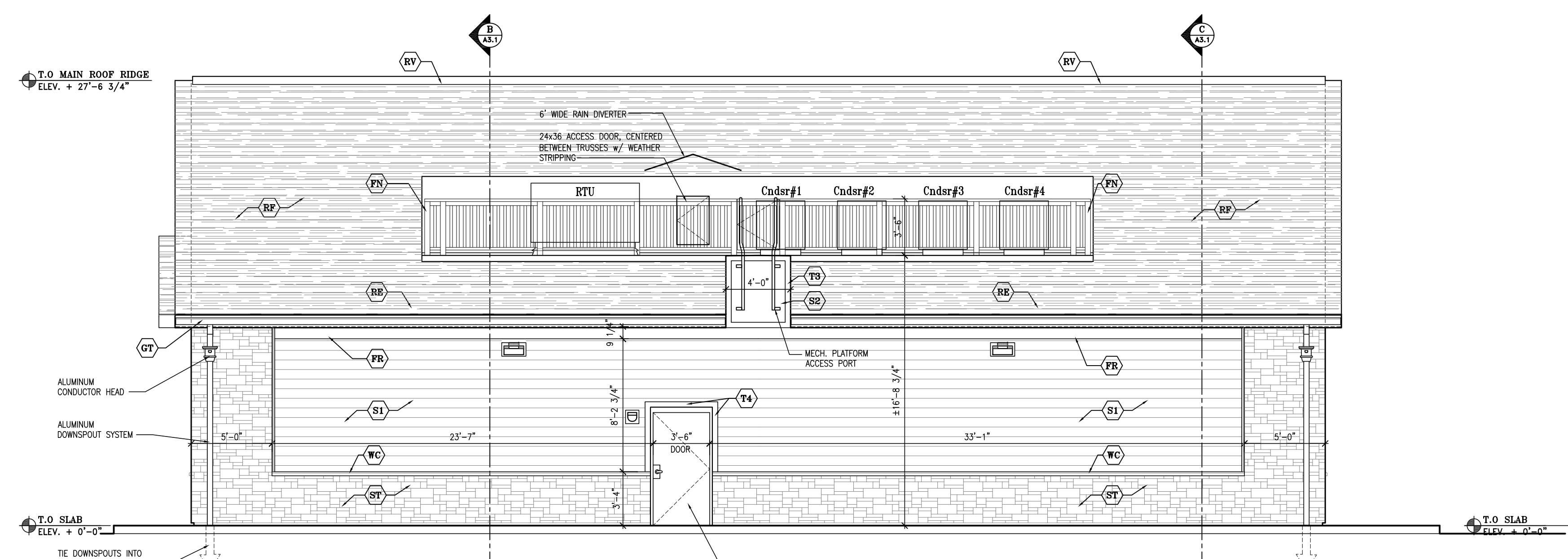
**ENTRY ELEVATION (EAST)**  
SCALE: 3/16" = 1'-0"



**SIDE ELEVATION (SOUTH)**  
SCALE: 3/16" = 1'-0"



**CONGRESS STREET ELEVATION (NORTH)**  
SCALE: 3/16" = 1'-0"



**REAR ELEVATION (WEST)**  
SCALE: 3/16" = 1'-0"

11-06-15