

ALPHAarchitects
17 CHESTNUT STREET
PORTLAND, ME 04101
PHONE: 207.761.9500
FAX: 207.761.9595
design@alphaarchitects.com

COPYRIGHT

Reuse or reproduction of the contents of this document is not permitted without written permission of ALPHA ARCHITECTS



Portland Property Holdings LLC
2282 Congress Street
Portland, ME. 04102

JOB: 12132

ISSUE DATE	
PRELIM	03-27-13
P BOARD	-
SFMO 2	10-16-15
CD's	-
REV. 1	10-16-15
PRINT	10-16-15

LIFE SAFETY FIRST FLOOR PLAN

LS1

10-16-15

FIRE PROTECTION LEGEND

- FE FIRE EXTINGUISHER 10# ABC
- FE-K FIRE EXTINGUISHER 10# K
- EXIT LIGHT
- STROBE ONLY WITH CANDELLA RATING AS NOTED
- HORN STROBE WITH CANDELLA RATING AS NOTED
- DUAL EMERGENCY LIGHT
- SINGLE EMERGENCY LIGHT
- SMOKE DETECTOR (CEILING)
- HEAT DETECTOR (CEILING)
- COMBINATION LIGHT/EXHAUST FAN
- FIRE ALARM MASTER CONTROL PANEL
- PULL STATION
- EXTERIOR EGRESS LIGHT
- NOT AN EXIT SIGN W RAISED BRILLE
- V.A.P. VAN ACCESSIBLE

NOTES:

- ALL EMERGENCY LIGHTS MUST BE POWERED BY BATTERY BACK-UP OR GENERATOR PER NFPA 101.
- HVAC PER NFPA 90A
- EMERGENCY LIGHTS TO AVERAGE 1 FOOTCANDLE AND .1 FOOTCANDLE MINIMUM.

ABBREVIATIONS:

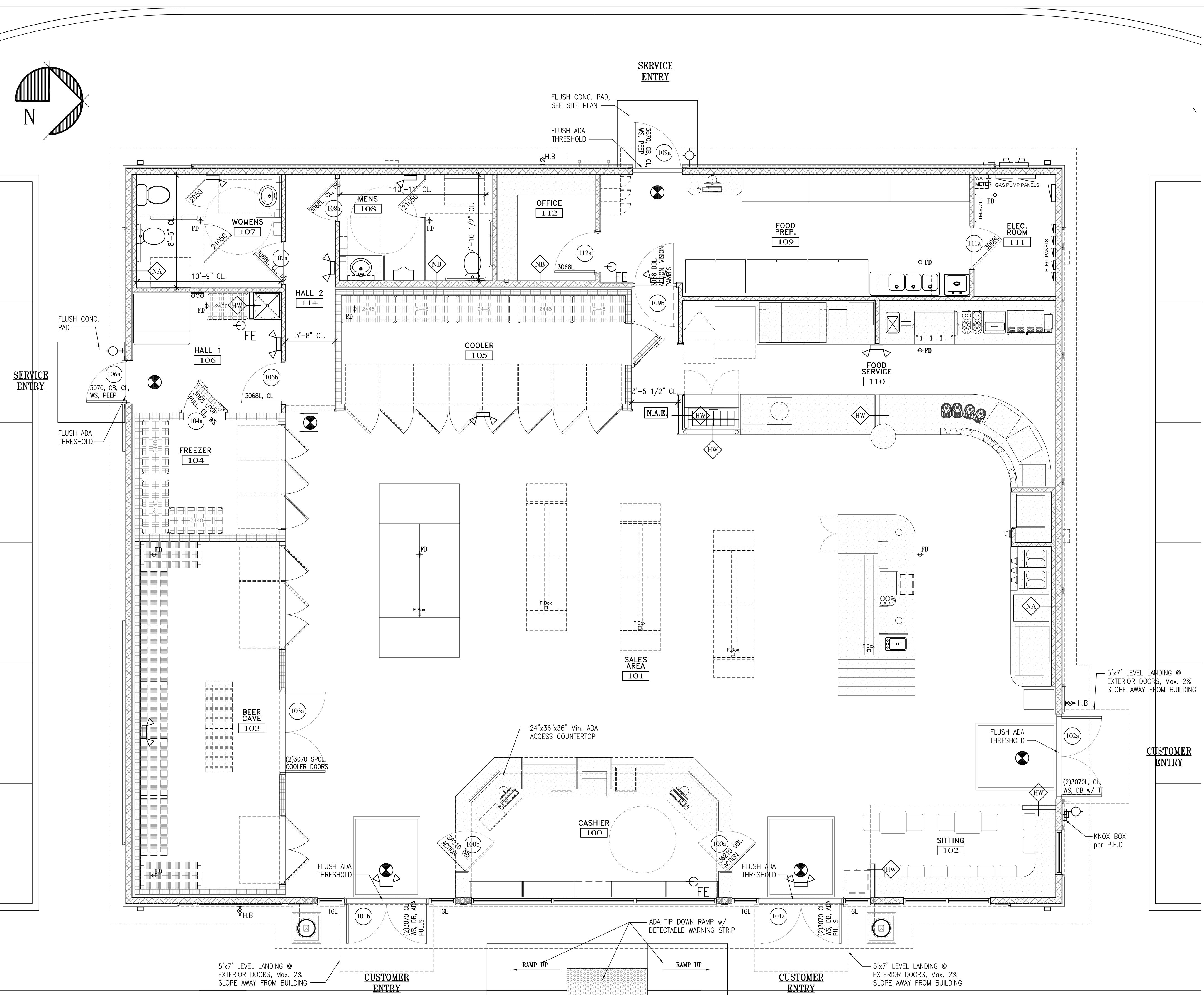
- C.O. = CASSED OPENING
- CL. = DOOR CLOSER
- WS. = WEATHER STRIPPING SYSTEM
- DB. = DEAD BOLT
- L. = ADA LEVER

45° ALTERNATING BRACING @ 32" o.c
ANCHOR TO DECK ABOVE, AS REQ'D

(2)2x WOOD TOP PLATE
T.O WALL EL. VARIES
FIBERGLASS BATT SOUND INSUL
ONE LAYER 1/2" GWB
WOOD STUDS @ 16" o.c U.N.O.
2x WOOD BOTTOM PLATE

NOTE: USE MR GWB @ ALL WET AREAS

WD 2x4 STUD WALL NOT RATED
WD 2x6 STUD WALL NOT RATED



LIFE SAFETY FIRST FLOOR PLAN
SCALE: 1/4" = 1'-0"

3871 SF GROSS

NOTE: ALL INTERIOR PARTITIONS TO BE TYPE NA U.O.N.

