

ALPHAarchitects
17 CHESTNUT STREET
PORTLAND, ME 04101
PHONE: 207.761.9500
FAX: 207.761.9595
design@alphaarchitects.com



Reuse or reproduction of the contents of this document is not permitted without written permission of ALPHA ARCHITECTS



Portland Property Holdings LLC
2282 Congress Street
Portland, ME. 04102

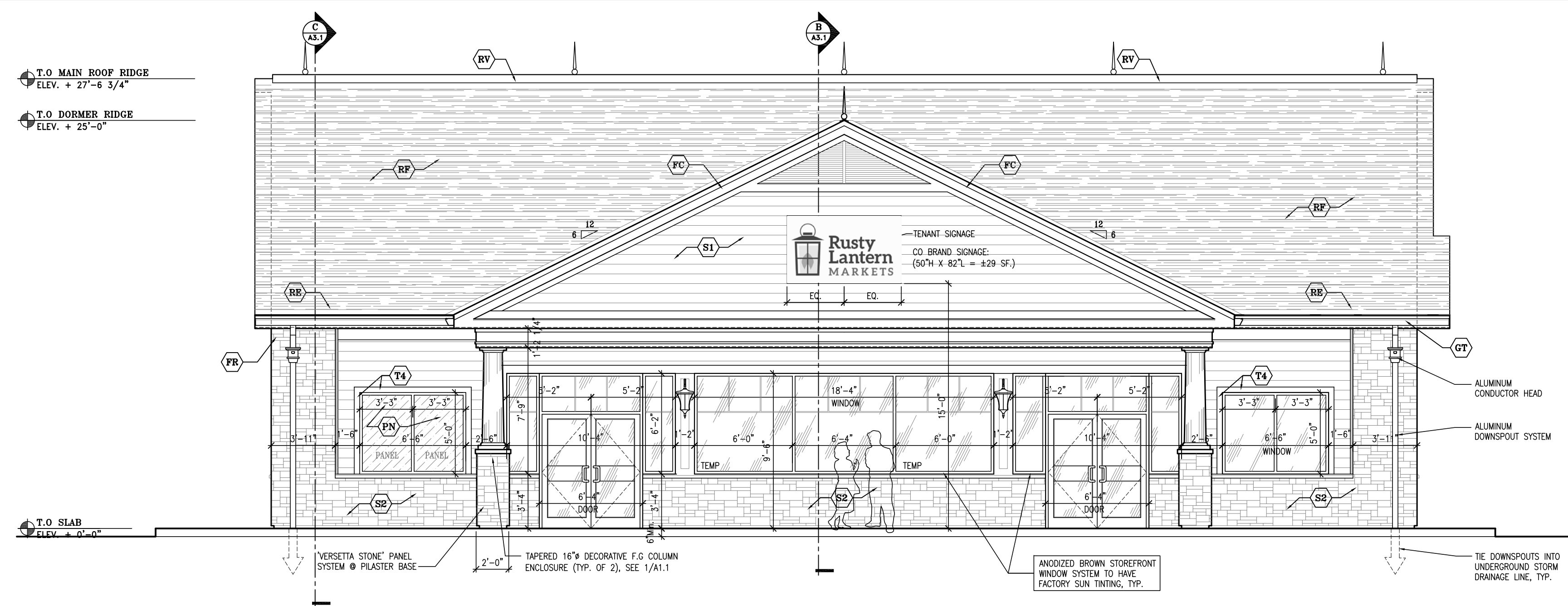
JOB: 12132

ISSUE DATE	
PRELIM	03-27-13
P BOARD	-
SFMO 2	10-16-15
CD's	-
REV. 1	10-16-15
PRINT	10-16-15

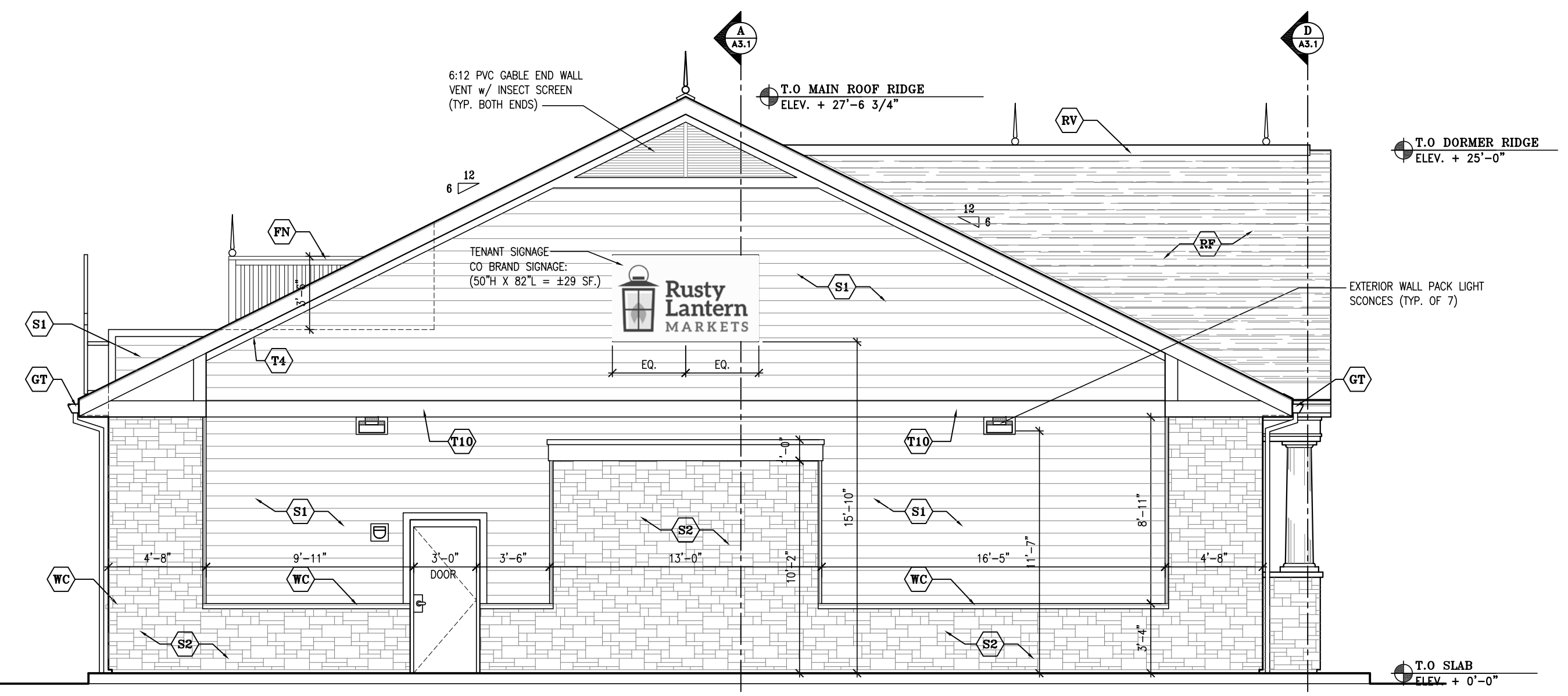
EXTERIOR ELEVATIONS
A2.1

MATERIAL LEGEND:

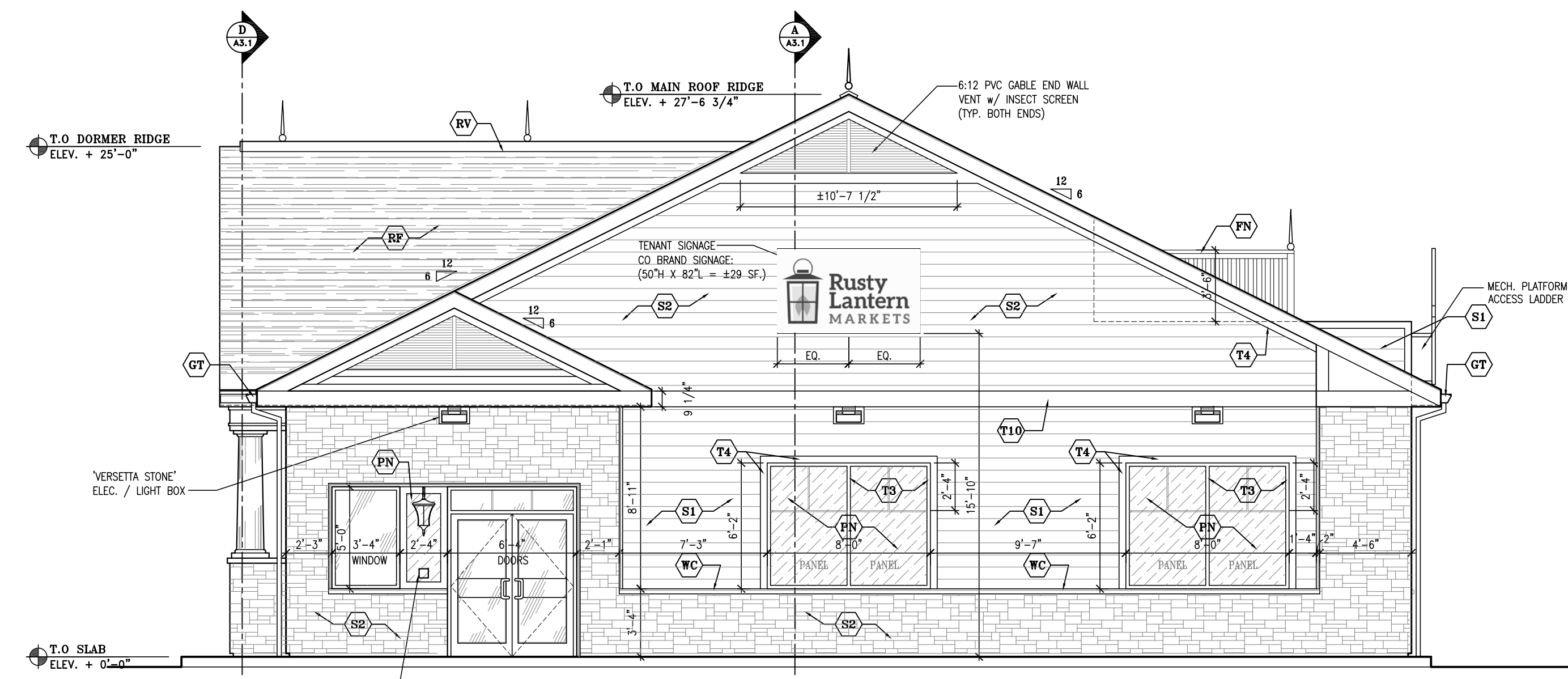
(CB) 1x8 "HARD-BOARD" CORNER BOARDS	(RV) "ROLL SCREEN" RIDGE AIR VENT w/ SHINGLE CAP, INSECT SCREEN & 3" THROAT Min., TYP.
(FC) 2x4 ON 2x10 FASCIA w/ METAL CAP FLASHING	(S1) 7" T/W "HARD-PLANK" SIDING OVER "TYPAR" BUILDING WRAP, TYP.
(DE) PREFINISHED ALUM. DRIP EDGE, TYP.	(S2) "VERSETTA STONE" PANEL SYSTEM OVER "TYPAR" BUILDING WRAP, TYP.
(FN) +42" WHITE "PREMER" COMPOSITE RAILING SYSTEM / HWY SCREEN	(T3) 1x3 "HARD" TRIM BOARD w/ PRE-FINISHED ALUM. FLASHING @ ALL HEADS & HORIZ. TRIM BOARDS
(FR) 1x10 "HARD" FREEZE BOARD w/ CONT. PRE-FINISHED ALUM. FLASHING	(T4) 1x4 "HARD" TRIM BOARD w/ PRE-FINISHED ALUM. FLASHING @ ALL HEADS & HORIZ. TRIM BOARDS
(GT) 6" PREFINISHED ALUM. GUTTER SYSTEM ON ALUM. CLAD 1x8 FASCIA	(T6) 1x6 "HARD" TRIM BOARD w/ PRE-FINISHED ALUM. FLASHING @ ALL HEADS
(PN) 3/8" PAINTED MDF PANELING OVER EXTERIOR BUILDING SHEATHING & V.B.	(T10) 1x10 "HARD" TRIM BOARD w/ PRE-FINISHED ALUM. FLASHING @ ALL HEADS
(RE) METAL EDGE ICE CUTTER w/ HEAT TRACE GUTTER & EAVE SYSTEM TIED TO T-STAT	(WC) "VERSETTA STONE" WANSOOT CAP
(RP) "CERTAINTED" BLACK ARCHITECTURAL, 35 YR ROOF SHINGLES ON 30# FELT w/ ICE & WATER SHIELD @ LOWER 3'-0", TYP.	(WT) 1x10 "AZEK" WATER TABLE w/ PRE-FINISHED ALUM. FLASHING



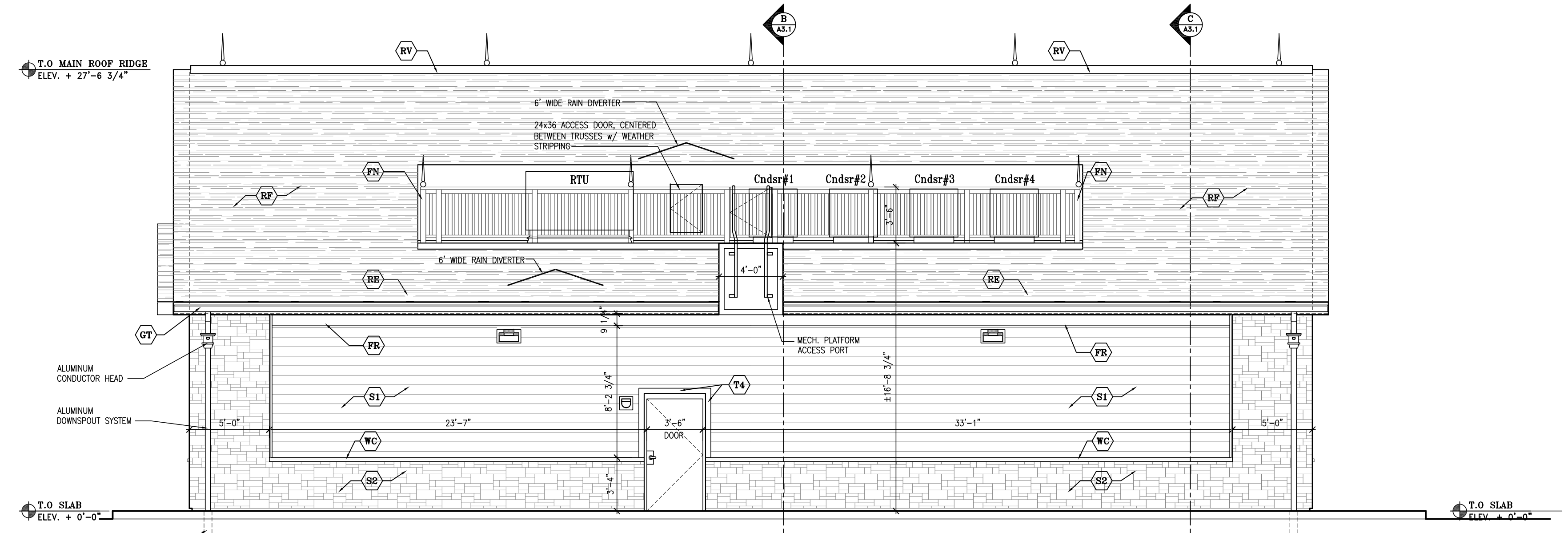
ENTRY ELEVATION (EAST)
SCALE: 3/16" = 1'-0"



SIDE ELEVATION (SOUTH)
SCALE: 3/16" = 1'-0"



CONGRESS STREET ELEVATION (NORTH)
SCALE: 3/16" = 1'-0"



REAR ELEVATION (WEST)
SCALE: 3/16" = 1'-0"

10-16-15