

ALPHAarchitects
17 CHESTNUT STREET
PORTLAND, ME 04101
PHONE: 207.761.9500
FAX: 207.761.9595
design@alphaarchitects.com

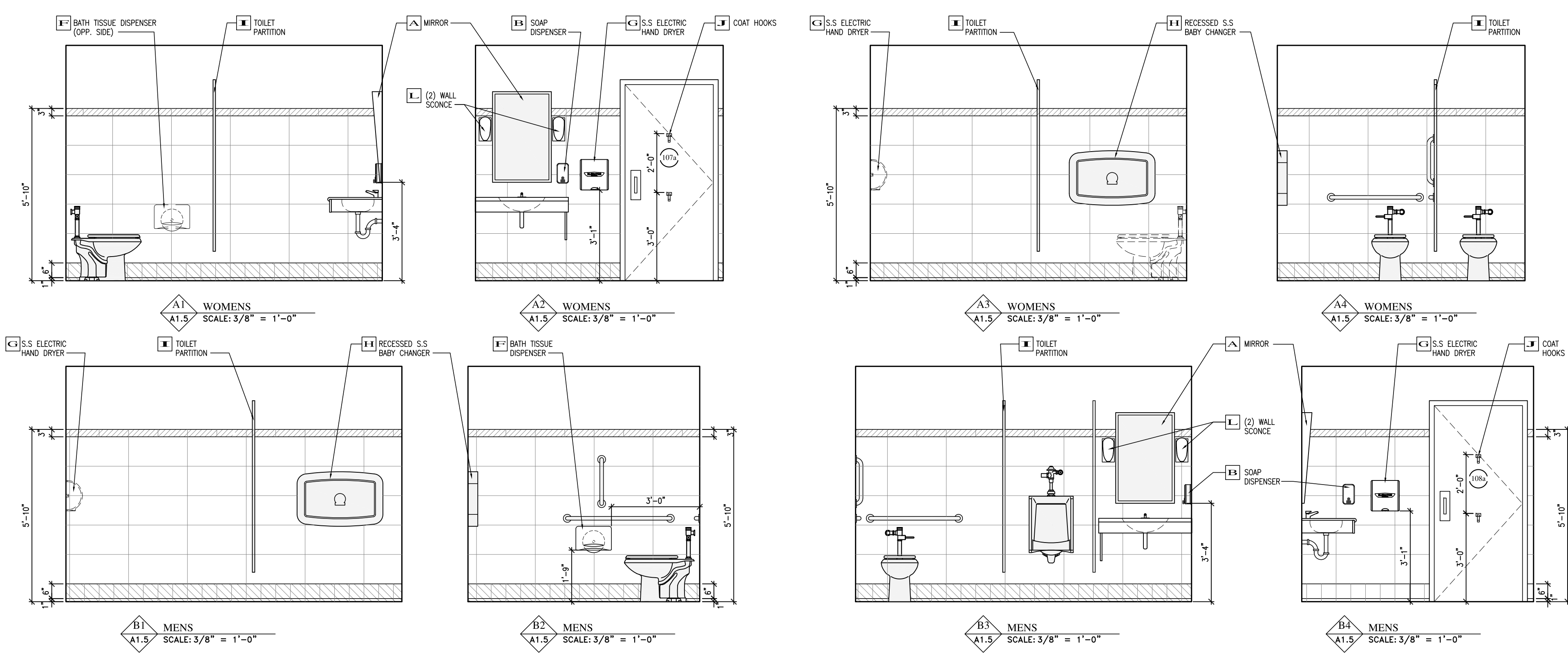
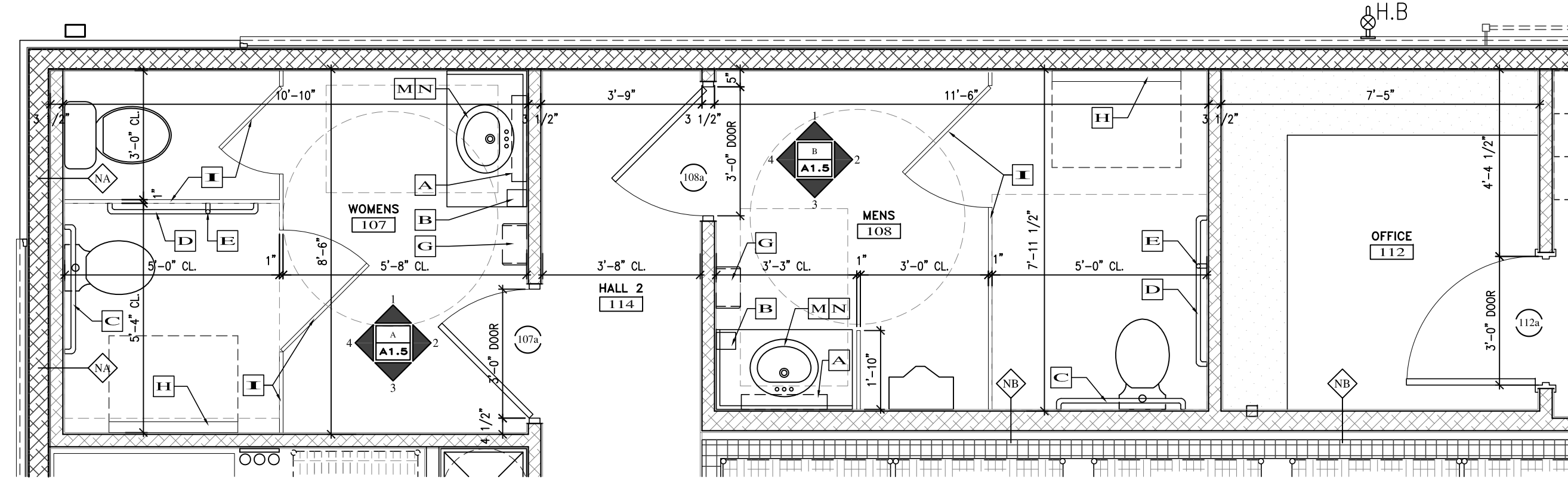
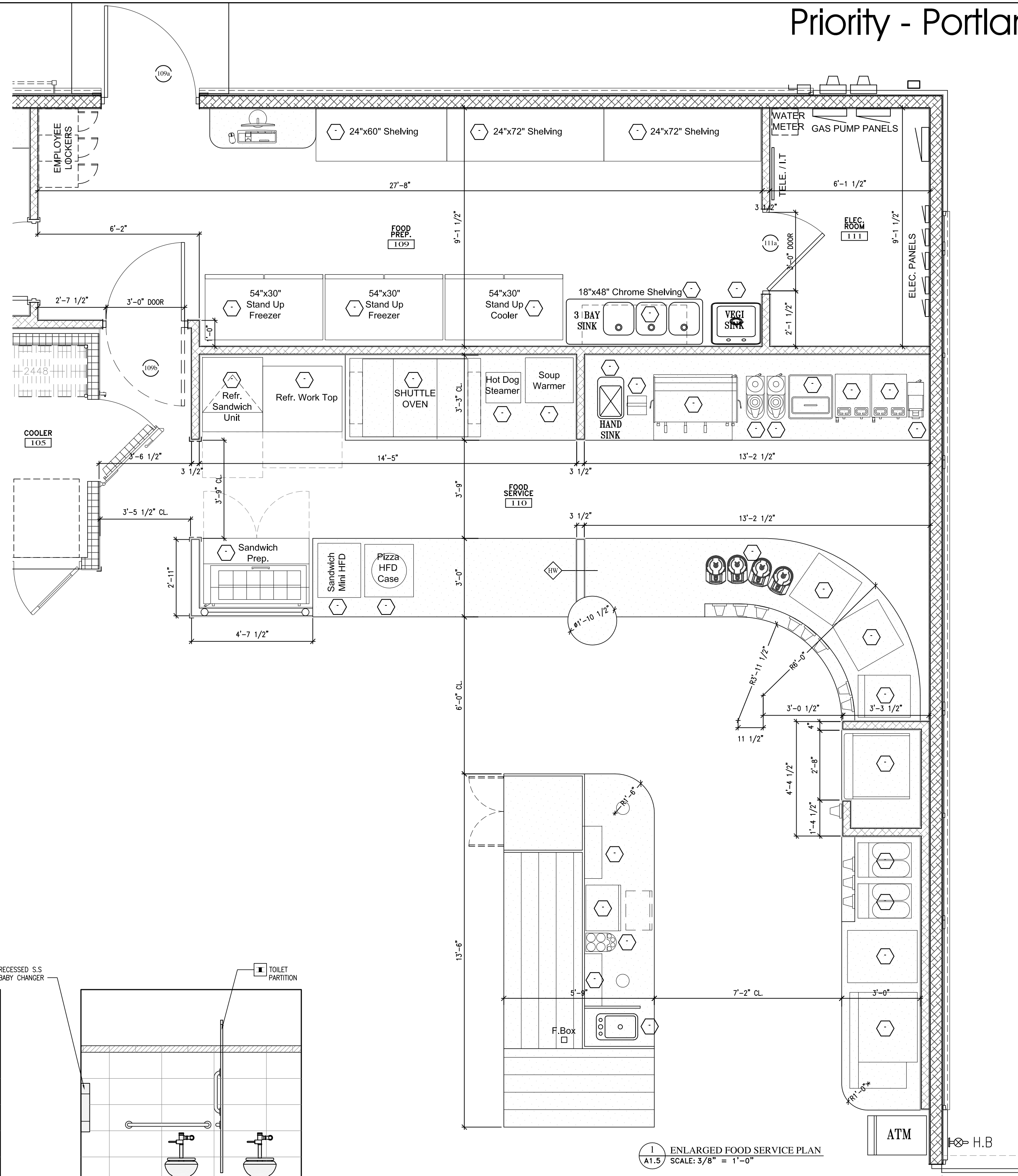
COPYRIGHT

Reuse or reproduction of the contents of this document is not permitted without written permission of ALPHA ARCHITECTS



Portland Property Holdings LLC
2282 Congress Street
Portland, ME. 04102

ITEM	DESCRIPTION	SIZE (W) x (D) x (H)	VOLTS	AMPS	LOAD CB	PHASE/WIRES	PLUG TYPE	MTG. HGT.	MOUNTING CAB/WALL	REMARKS
1										
2										
3										
4										
5										
6										
7										
8										
9										
10										
11										
12										
13										
14										
15										
16										
17										
18										
19										
20										
21										
22										
23										
24										
25										
26										
27										
28										
29										
30										
31										
32										
33										
34										
35										



MARK	MANUFACTURER	MODEL	DESCRIPTION
A	BOBRICK	B-293-1830 HANDCAPPED	24"x36" S.S. FRAMED MIRROR
B	KIMBERLY-CLARK	92145	BLACK SOAP DISPENSER
C	BOBRICK	B-680636	36" REAR GRAB BAR, S.S. GRAB BAR w/ PEENED SURFACE
D	BOBRICK	B-680642	42" SIDE GRAB BAR, S.S. GRAB BAR w/ PEENED SURFACE
E	BOBRICK	B-680618	18" VERTICAL GRAB BAR, S.S. GRAB BAR w/ PEENED SURFACE
F	KIMBERLY-CLARK	09602	SMOKE BATH TISSUE DISPENSER
G	XLERATOR	XL-SB	ELECTRIC HAND DRYER
H	KOMAL	IC8200-01SS	S.S. BABY CHANGING STATION
I	-	-	S.S. TOILET PARTITIONS
J	BOBRICK	B-6717	COAT HOOKS (2 REQUIRED)
K	-	-	RECESSED S-S PAPER-TOWEL & WASTE-RECEPTACLE
L	DVIL LIGHTING	DVP2399	LIGHT WALL SCONCE (CHROME FINISH)
M	LIVINGSTONE	-	GRANITE COUNTERTOP - CRYSTAL BLACK
N	BRISTOL	B606	UNDER MOUNT SINK - WHITE SQUARE

JOB: 12132

ISSUE DATE	
PRELIM	03-27-13
P BOARD	-
SFMO 2	10-16-15
CD'S	-
REV. 1	10-16-15
PRINT	10-16-15

ENLARGED RESTROOMS & FOOD SERVICE PLANS

A1.5

10-16-15