

ALPHAarchitects
17 CHESTNUT STREET
PORTLAND, ME 04101
PHONE: 207.761.9500
FAX: 207.761.9595
design@alphaarchitects.com

COPYRIGHT

Reuse or reproduction of the contents of this document is not permitted without written permission of ALPHA ARCHITECTS



Portland Property Holdings LLC
2282 Congress Street
Portland, ME. 04102

JOB: 12132

ISSUE DATE	
PRELIM	03-27-13
P BOARD	-
SFMO	09-04-14
CD's	-
REV. 1	-
PRINT	07-07-15

LIFE SAFETY
FIRST FLOOR
PLAN
LS1

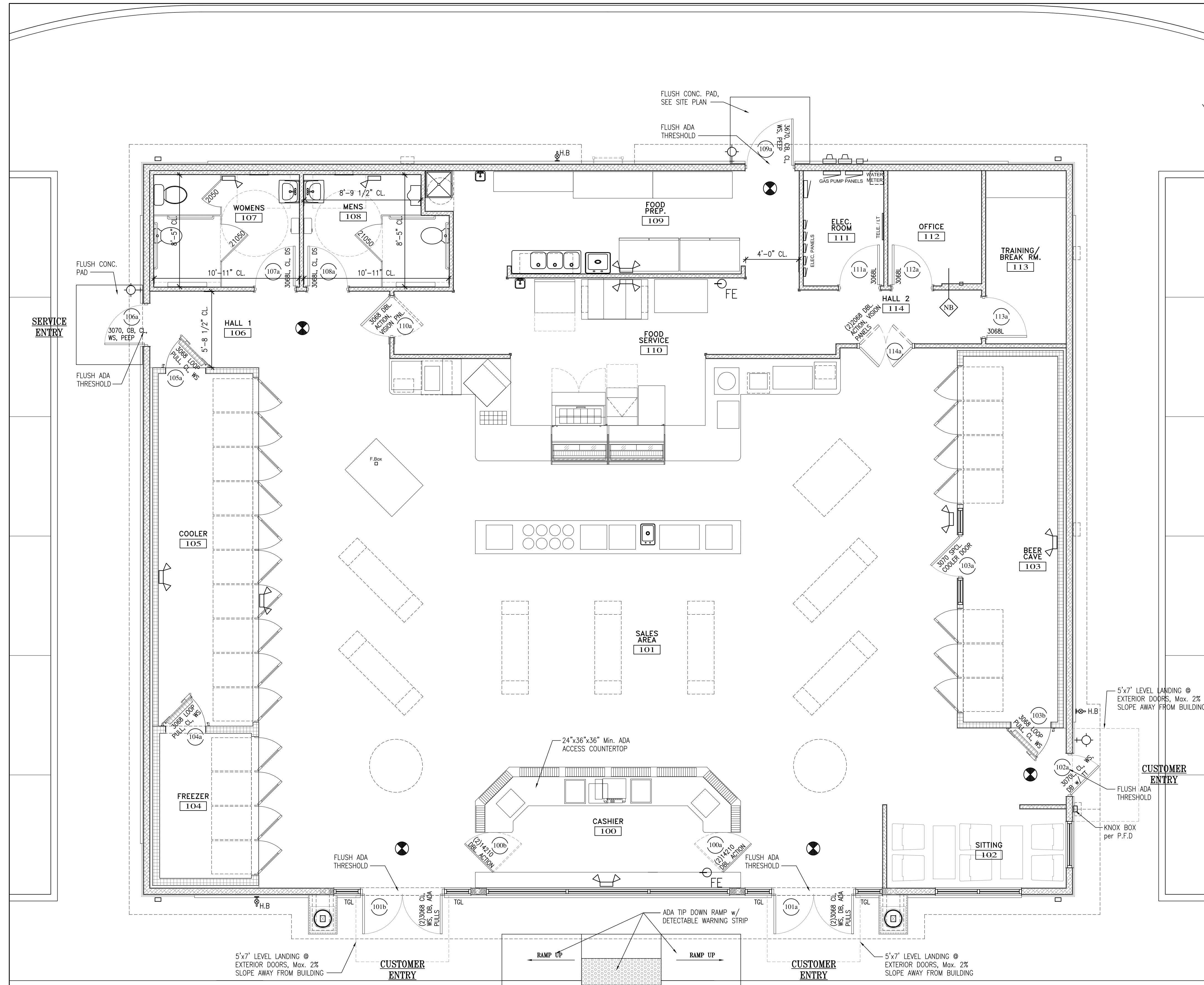
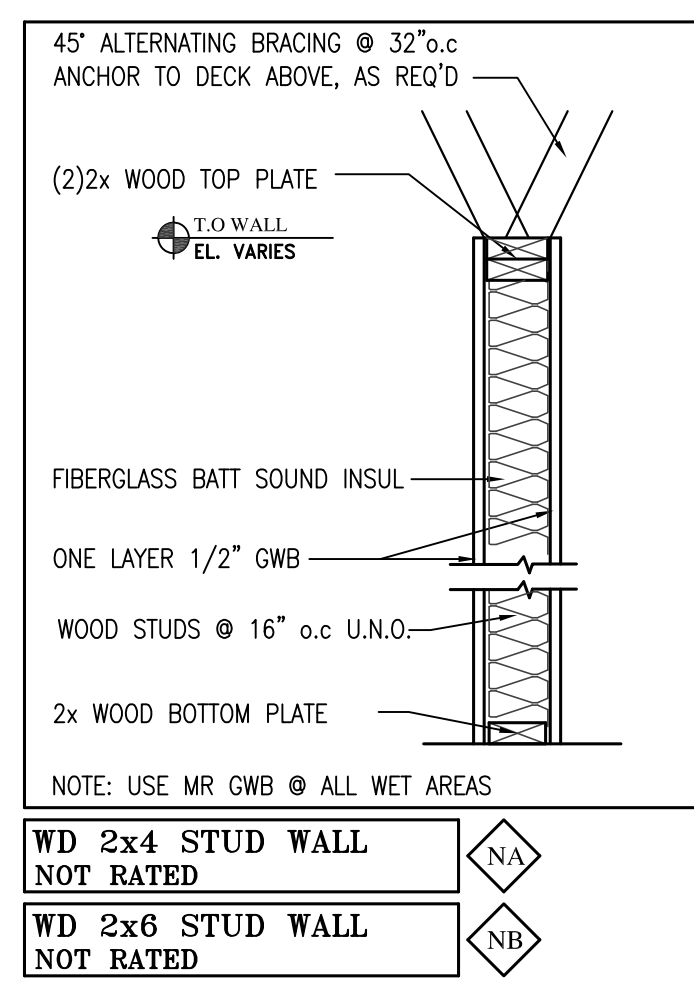
FIRE PROTECTION LEGEND

	FIRE EXTINGUISHER 10# ABC
	FIRE EXTINGUISHER 10# K
	EXIT LIGHT
	STROBE ONLY WITH CANDELLA RATING AS NOTED
	HORN STROBE WITH CANDELLA RATING AS NOTED
	DUAL EMERGENCY LIGHT
	SINGLE EMERGENCY LIGHT
	SMOKE DETECTOR (CEILING)
	HEAT DETECTOR (CEILING)
	COMBINATION LIGHT/EXHAUST FAN
	FIRE ALARM MASTER CONTROL PANEL
	PULL STATION
	EXTERIOR EGRESS LIGHT
	'NOT AN EXIT' SIGN W RAISED BRILLE
	VAN ACCESSIBLE

- NOTES:**
- ALL EMERGENCY LIGHTS MUST BE POWERED BY BATTERY BACK-UP OR GENERATOR PER NFPA 101.
 - HVAC PER NFPA 90A
 - EMERGENCY LIGHTS TO AVERAGE 1 FOOTCANDLE AND .1 FOOTCANDLE MINIMUM.

ABBREVIATIONS:

C.O	= CASD OPENING
CL	= DOOR CLOSER
WS	= WEATHER STRIPPING SYSTEM
DB	= DEAD BOLT
L	= ADA LEVER



LIFE SAFETY
FIRST FLOOR PLAN
SCALE: 1/4" = 1'-0"



07-07-15