

ALPHAarchitects  
17 CHESTNUT STREET  
PORTLAND, ME 04101  
PHONE: 207.761.9500  
FAX: 207.761.9595  
design@alphaarchitects.com

COPYRIGHT

Reuse or reproduction of the contents of this document is not permitted without written permission of ALPHA ARCHITECTS



Portland Property Holdings LLC  
2282 Congress Street  
Portland, ME. 04102

JOB: 12132

ISSUE DATE	
PRELIM	03-27-13
P BOARD	-
SFMO	09-04-14
CD's	-
REV. 1	-
PRINT	07-07-15

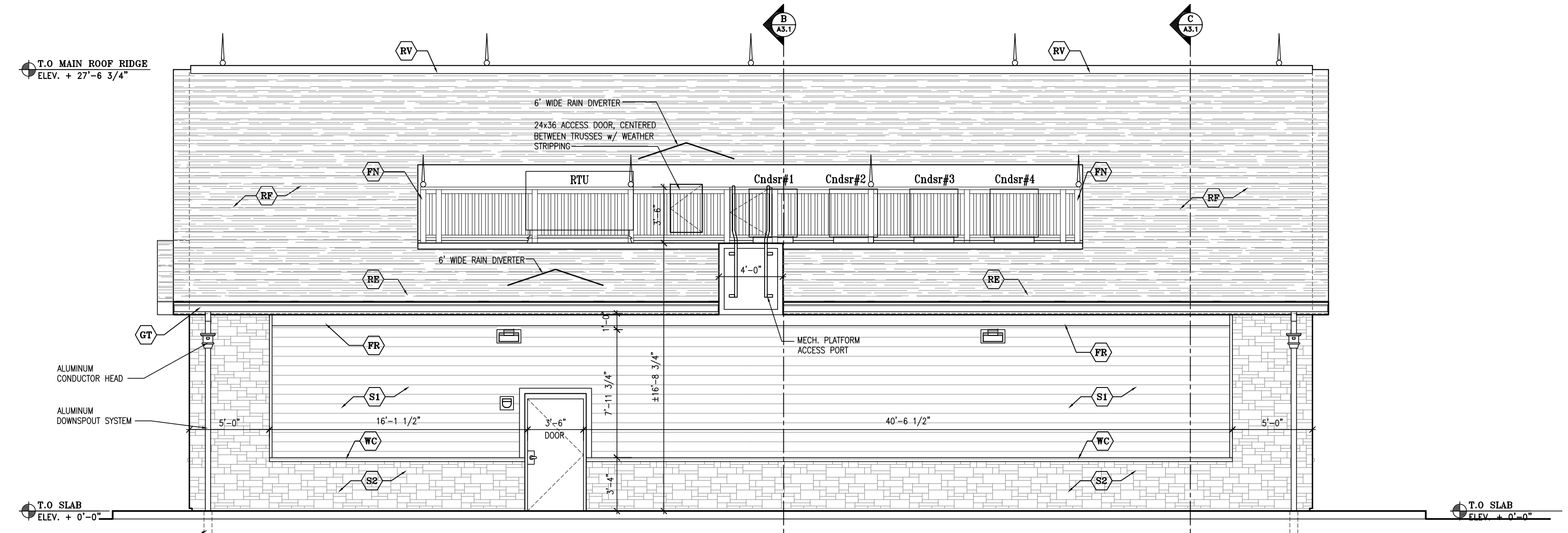
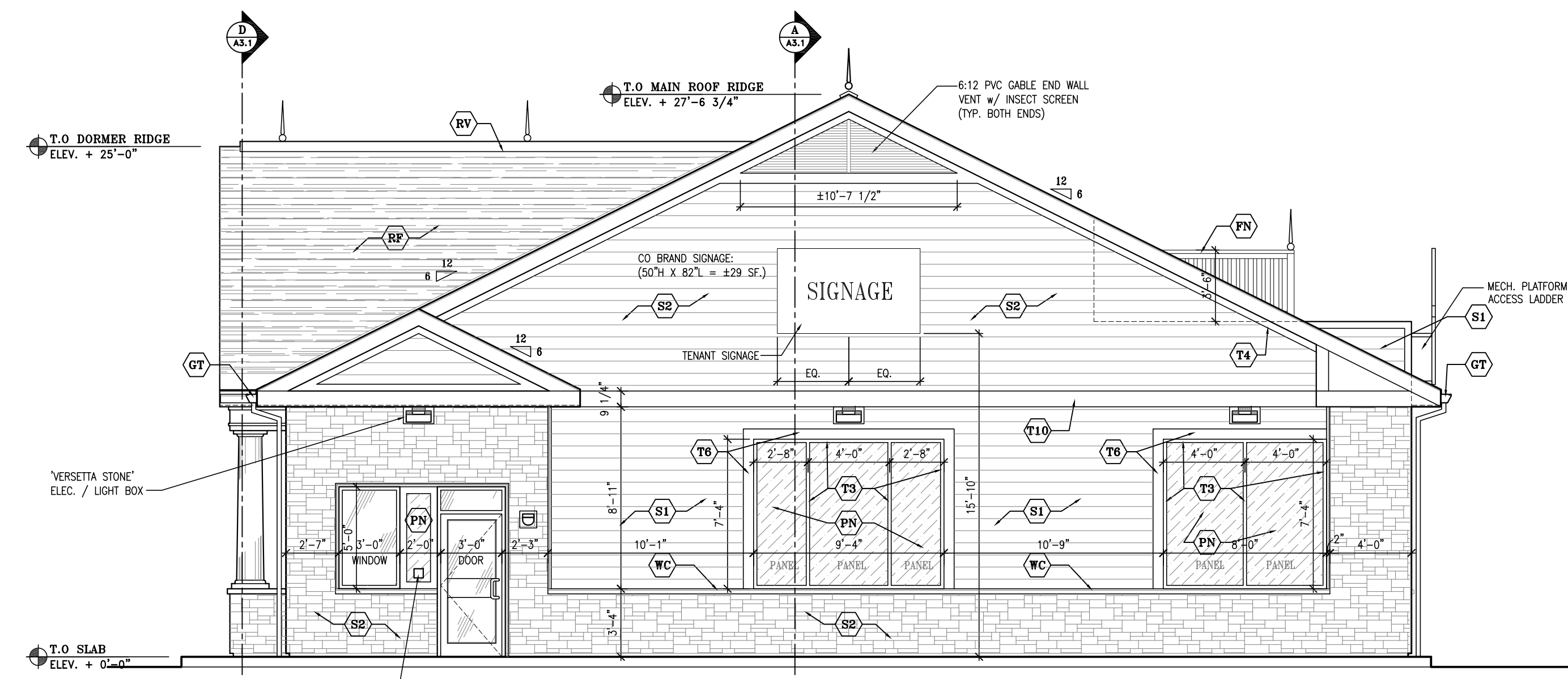
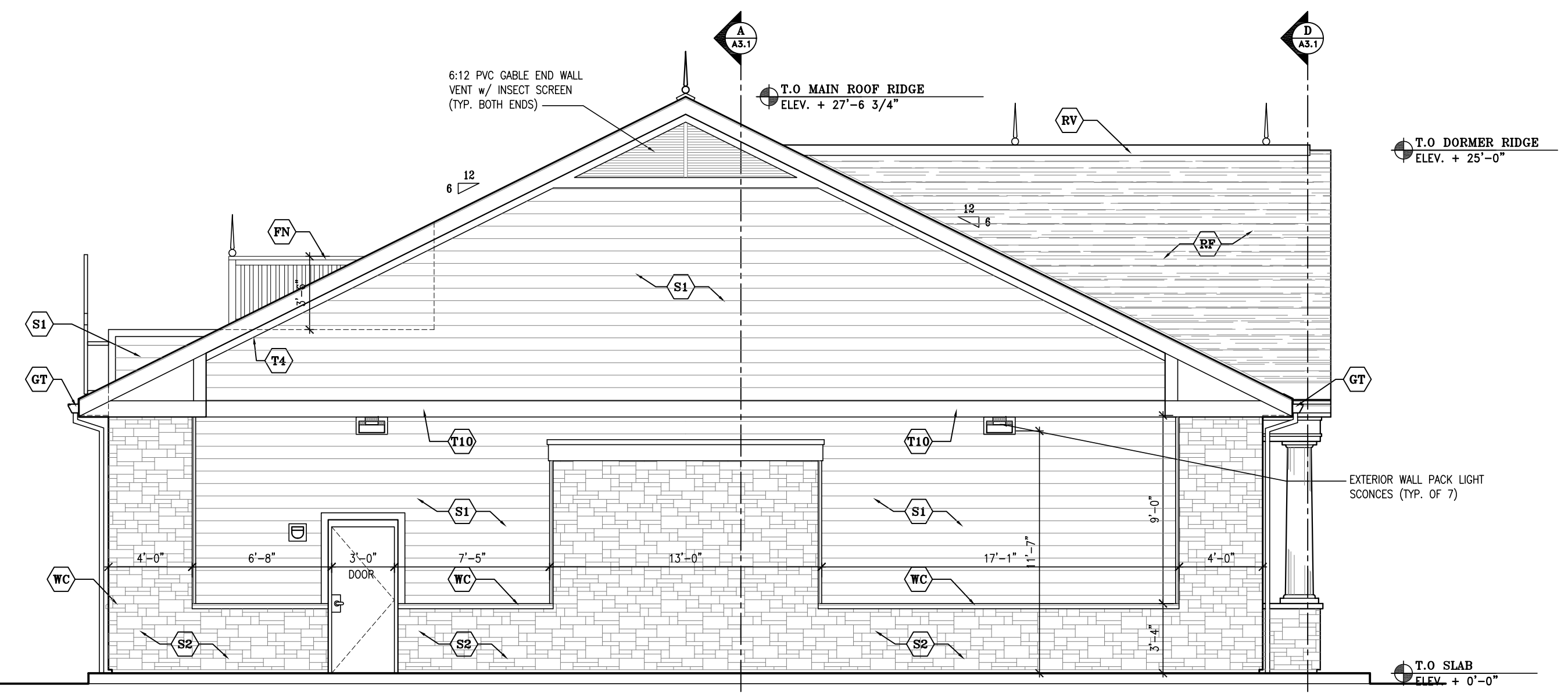
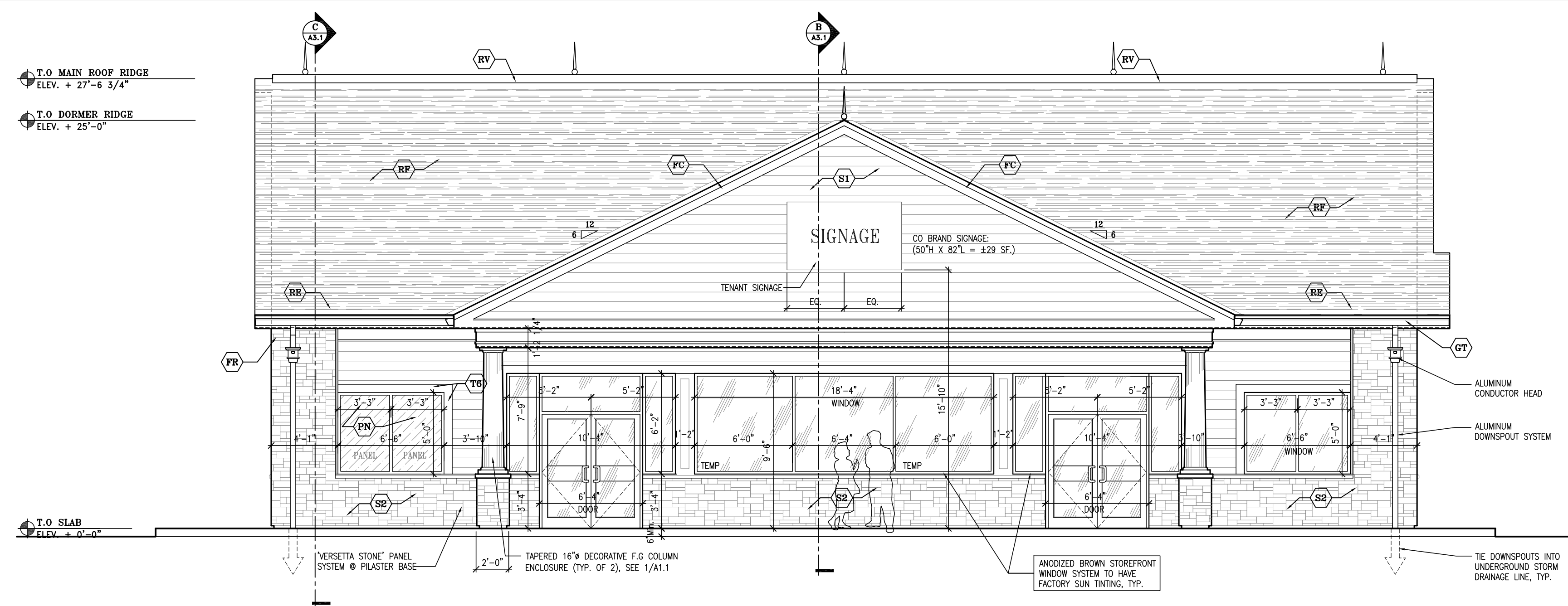
EXTERIOR ELEVATIONS

A2.1

07-07-15

MATERIAL LEGEND:

CB 1x8 'HARD-BOARD' CORNER BOARDS	RV 'ROLL SCREEN' RIDGE AIR VENT w/ SHINGLE CAP, INSECT SCREEN & 3" THROAT Min., TYP.
FC 2x4 ON 2x10 FASCIA w/ METAL CAP FLASHING	S1 7" T/W 'HARD-PLANK' SIDING OVER 'TYPAR' BUILDING WRAP, TYP.
DE PREFINISHED ALUM. DRIP EDGE, TYP.	S2 'VERSETTA STONE' PANEL SYSTEM OVER 'TYPAR' BUILDING WRAP, TYP.
FN +42" WHITE 'PREMER' COMPOSITE RAILING SYSTEM / HWY SCREEN	T3 1x3 'HARD' TRIM BOARD w/ PRE-FINISHED ALUM. FLASHING @ ALL HEADS & HORIZ. TRIM BOARDS
FR 1x10 'HARD' FREEZE BOARD w/ CONT. PRE-FINISHED ALUM. FLASHING	T4 1x4 'HARD' TRIM BOARD w/ PRE-FINISHED ALUM. FLASHING @ ALL HEADS & HORIZ. TRIM BOARDS
GT 6" PREFINISHED ALUM. GUTTER SYSTEM ON ALUM. CLAD 1x8 FASCIA	T6 1x6 'HARD' TRIM BOARD w/ PRE-FINISHED ALUM. FLASHING @ ALL HEADS
PN 3/8" PAINTED MDF PANELING OVER EXTERIOR BUILDING SHEATHING & V.B.	T10 1x10 'HARD' TRIM BOARD w/ PRE-FINISHED ALUM. FLASHING @ ALL HEADS
RE METAL EDGE ICE CUTTER w/ HEAT TRACE GUTTER & LEAVE SYSTEM TIED TO T-STAT	WC 'VERSETTA STONE' WANSOOT CAP
RT 'CERTAINTED' BLACK ARCHITECTURAL, 35 YR ROOF SHINGLES ON 30# FELT w/ ICE & WATER SHIELD @ LOWER 3'-0", TYP.	WT 1x10 'AZEK' WATER TABLE w/ PRE-FINISHED ALUM. FLASHING



REAR ELEVATION (WEST)  
SCALE: 3/16" = 1'-0"