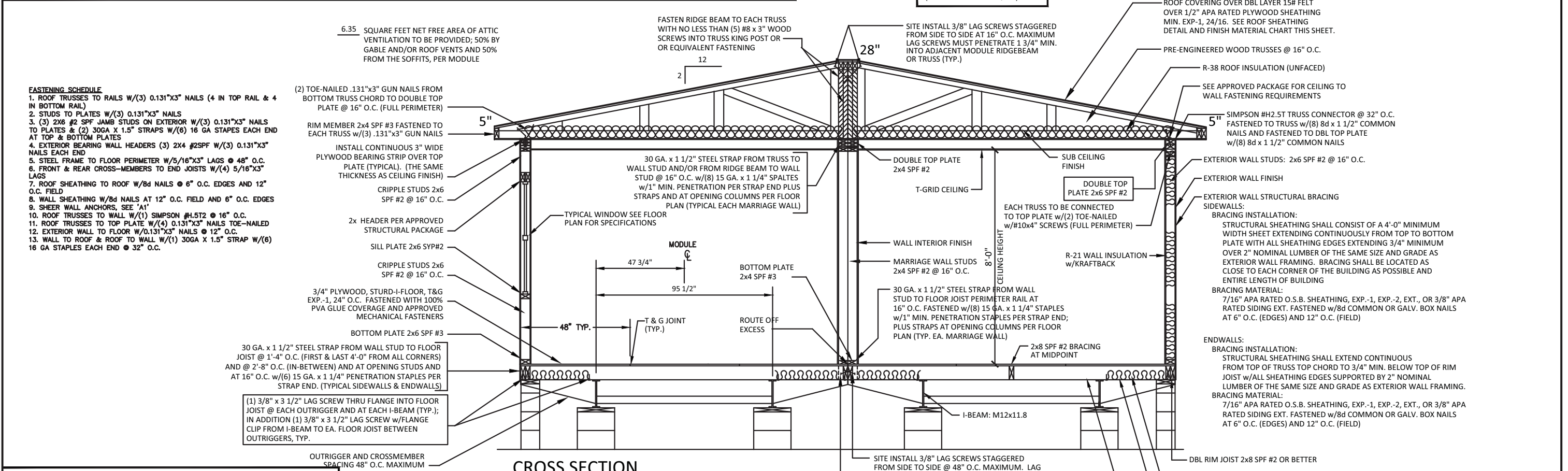
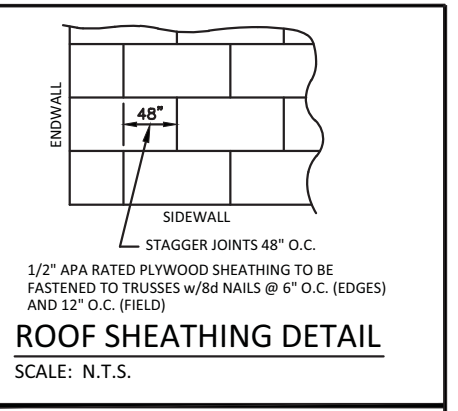


GENERAL CROSS-SECTION NOTES:

- UNLESS OTHERWISE SPECIFIED, ALL STEEL MUST COMPLY w/ASTM A36, YIELD STRENGTH = 36 KSI.
- ALL LAG SCREWS MUST COMPLY WITH ANSI/ASME B18.2.1. Fyb = 60 K.S.I. MIN.



RIDGE BEAM CONSTRUCTION:

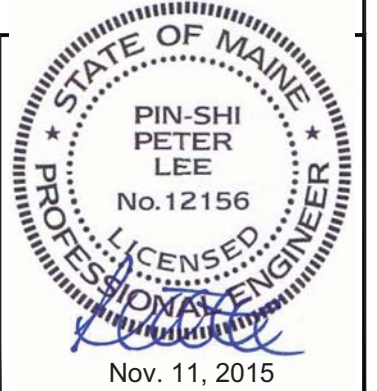
TWO (2) LAYER OF 1 3/4" x 22" MICRO-LAM, EACH MODULE, EACH HALF EACH HALF CONTINUOUS ENTIRE LENGTH OF BUILDING. MICRO-LAM BEAM MUST BE CONTINUOUSLY BRACED AT TOP EDGE OF BEAM

NOTES:

- MICRO-LAM F = 2,800 PSI.
- MICRO-LAM MUST BE CONTINUOUS OVER CLEARSPAN(S).
- BEAMS SUPPORT BY ENDWALL COLUMNS MUST EXTEND CONTINUOUS OVER COLUMNS TO EXTERIOR FACE OF ENDWALL.
- FASTEN ROOF SHEATHING INTO TOP EDGE OF MICRO-LAM TO PROVIDE CONTINUOUS LATERAL SUPPORT OF BEAM.
- INSTALL (2x4) x 20" SPF #3 RIDGE BEAM BEARING STIFFENER OVER SUPPORT COLUMNS WHEN SPECIFIED ON FLOOR PLAN. FASTEN THE FACE OF THE STIFFENER TO THE RIDGE BEAM WITH 100% GLUE COVERAGE AND (6) 16 GA. STAPLES WITH 3/4" MINIMUM PENETRATION INTO MICRO-LAM BEAM.
- WHEN MORE THAN ONE LAYER OF MICRO-LAM IS INSTALLED ON EITHER SIDE OF THE BUILDING MATE LINE, LAYERS ON THAT SIDE OF THE MATE LINE MUST BE FASTENED TOGETHER w/16 GA. STAPLES x 7/16" MINIMUM CROWN (INSTALLED PARALLEL TO BEAM SPAN) x 3/4" MINIMUM PENETRATION INTO CONNECTING LAYER. STAPLES SHALL BE PLACED @ 6" O.C. MAXIMUM VERTICALLY AND HORIZONTALLY WITH FIRST AND LAST ROW OF STAPLES LOCATION 1" FROM TOP AND BOTTOM EDGE OF BEAM RESPECTIVELY.

INTERIOR FINISH MATERIAL:		EXTERIOR FINISH MATERIAL:	
SUB CEILING:	1/2 INCH GYPSUM BOARD INSTALLED PER MANUFACTURER'S SPECIFICATIONS. (RAW, UN-FINISHED)	ROOF:	26 GA GALV STEEL METAL ROOF OVER DBL 15# FELT w/36" EA VE ICE GUARD PROTECTION; INSTALLED PER MANUFACTURER'S SPECIFICATIONS OR AN APPROVED EQUAL.
CEILING:	T-GRID ACOUSTICAL TILE CEILING; INSTALLED AS PER MANUFACTURER'S SPECIFICATIONS. (PRE-FINISHED)	WALL:	VINYL LAP SIDING OVER APPROVED WEATHER RESISTANT MOISTURE BARRIER AND BRACING MATERIAL; FASTEN w/8d x 2 1/2" COMMON NAILS @ 6" O.C. AS PER MANUFACTURER'S SPECIFICATIONS.
WALL:	1/2" GYPSUM BOARD (SQUARE EDGE) - THRU OUT; INSTALLED PER MANUFACTURER'S SPECIFICATIONS.		
FLOOR:	CARPET - CLASSROOMS ONLY; VINYL BLOCK TILE - REMAINDER; INSTALLED PER MANUFACTURER'S SPECIFICATIONS.		

PETER LEE, P.E. M.S.
 ENGINEERING INTERNATIONAL, INC.
 ENGINEER: PETER LEE, P.E., M.S.
 CONSULTING ENGINEER
 23329 CENTURY DRIVE
 ELKHART, IN 46514



	SCHIAVI LEASING JENNIFER CURRIER 103 AIRPORT ROAD OXFORD, ME 04270 PH: (207) 539-8211 FAX: WWW.VANGUARDMODULAR.COM	SERIAL #: 351-B OCCUP: E DRAWING #: VGM-2015-0028	<h1>BUILDING CROSS SECTION</h1>		This document and all information contained herein, are the proprietary data and trade secrets of Vanguard Modular Building Systems (VMBS), and Schiavi Leasing Corporation (Schiavi). This document and the information contained herein may not be reproduced, used, or disclosed in any manner, or to any extent. Written authorization by a current employee of VMBS or Schiavi must be obtained prior to use of this information, in any form, including that which is represented by this complete page.
			Drawing Date: 11-10-2015	Project: PORTLAND, ME	
			Scale: NONE	6 of 6	