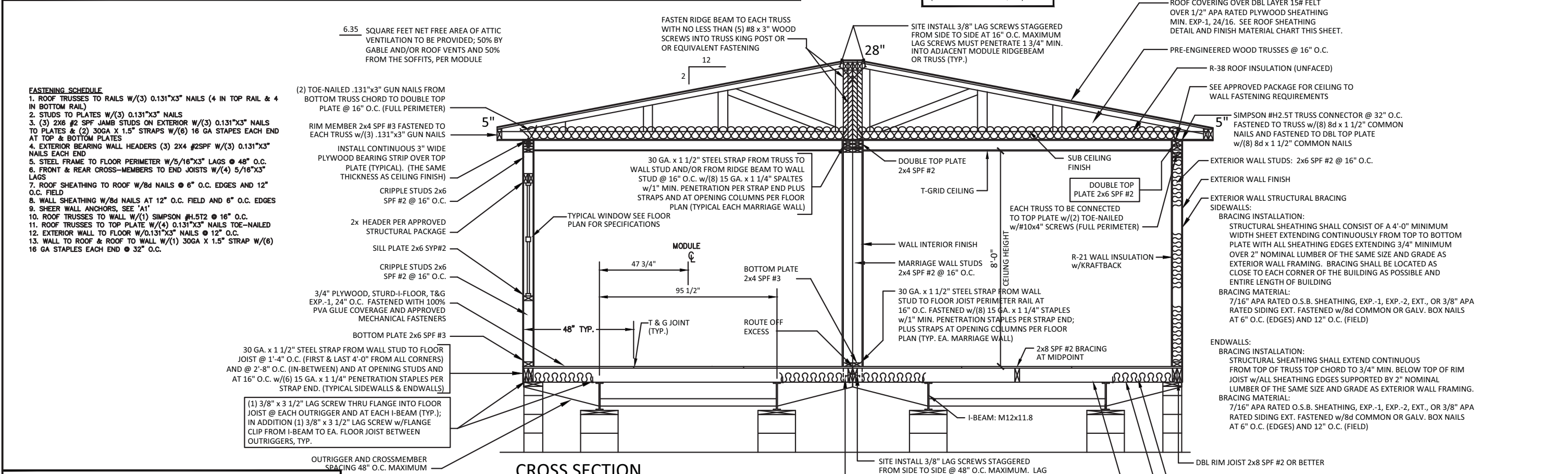
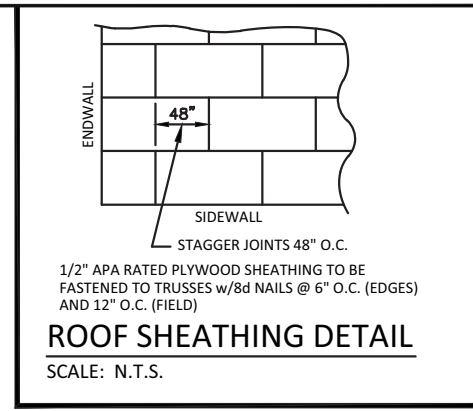


**GENERAL CROSS-SECTION NOTES:**

- UNLESS OTHERWISE SPECIFIED, ALL STEEL MUST COMPLY w/ASTM A36, YIELD STRENGTH = 36 KSI.
- ALL LAG SCREWS MUST COMPLY WITH ANSI/ASME B18.2.1. Fyb = 60 K.S.I. MIN.

APPROVED TRUSS DESIGN:  
 TRUSS MFG'R. UNIVERSAL  
 TRUSS DWG #: M165  
 (OR AN APPROVED EQUAL)

NOTE:  
 TRUSSES WHICH DO NOT FALL DIRECTLY OVER WALL STUDS SHALL BE STRAPPED TO TOP PLATE AND TOP PLATE SHALL BE STRAPPED TO NEAREST ADJACENT STUD WITH EQUIVALENT FASTENING



**RIDGE BEAM CONSTRUCTION:**

TWO (2) LAYER OF 1 3/4" x 22" MICRO-LAM, EACH MODULE, EACH HALF EACH HALF CONTINUOUS ENTIRE LENGTH OF BUILDING. MICRO-LAM BEAM MUST BE CONTINUOUSLY BRACED AT TOP EDGE OF BEAM

**NOTES:**

- MICRO-LAM F = 2,800 PSI.
- MICRO-LAM MUST BE CONTINUOUS OVER CLEARSPAN(S).
- BEAMS SUPPORT BY ENDWALL COLUMNS MUST EXTEND CONTINUOUS OVER COLUMNS TO EXTERIOR FACE OF ENDWALL.
- FASTEN ROOF SHEATHING INTO TOP EDGE OF MICRO-LAM TO PROVIDE CONTINUOUS LATERAL SUPPORT OF BEAM.
- INSTALL (2x4) x 20" SPF #3 RIDGE BEAM BEARING STIFFENER OVER SUPPORT COLUMNS WHEN SPECIFIED ON FLOOR PLAN. FASTEN THE FACE OF THE STIFFENER TO THE RIDGE BEAM WITH 100% GLUE COVERAGE AND (6) 16 GA. STAPLES WITH 3/4" MINIMUM PENETRATION INTO MICRO-LAM BEAM.
- WHEN MORE THAN ONE LAYER OF MICRO-LAM IS INSTALLED ON EITHER SIDE OF THE BUILDING MATE LINE, LAYERS ON THAT SIDE OF THE MATE LINE MUST BE FASTENED TOGETHER W/16 GA. STAPLES x 7/16" MINIMUM CROWN (INSTALLED PARALLEL TO BEAM SPAN) x 3/4" MINIMUM PENETRATION INTO CONNECTING LAYER. STAPLES SHALL BE PLACED @ 6" O.C. MAXIMUM VERTICALLY AND HORIZONTALLY WITH FIRST AND LAST ROW OF STAPLES LOCATION 1" FROM TOP AND BOTTOM EDGE OF BEAM RESPECTIVELY.

**CROSS SECTION**  
SCALE: N.T.S.

INTERIOR FINISH MATERIAL:	EXTERIOR FINISH MATERIAL:
SUB CEILING: 1/2 INCH GYPSUM BOARD INSTALLED PER MANUFACTURER'S SPECIFICATIONS. (RAW, UN-FINISHED)	ROOF: 26 GA GALV STEEL METAL ROOF OVER DBL 15# FELT W/36" EAVE ICE GUARD PROTECTION; INSTALLED PER MANUFACTURER'S SPECIFICATIONS OR AN APPROVED EQUAL.
CEILING: T-GRID ACOUSTICAL TILE CEILING; INSTALLED AS PER MANUFACTURER'S SPECIFICATIONS. (PRE-FINISHED)	WALL: VINYL LAP SIDING OVER APPROVED WEATHER RESISTANT MOISTURE BARRIER AND BRACING MATERIAL; FASTEN W/8d x 2 1/2" COMMON NAILS @ 6" O.C. AS PER MANUFACTURER'S SPECIFICATIONS.
WALL: 1/2" GYPSUM BOARD (SQUARE EDGE) - THRU OUT; INSTALLED PER MANUFACTURER'S SPECIFICATIONS.	
FLOOR: CARPET - CLASSROOMS ONLY; VINYL BLOCK TILE - REMAINDER; INSTALLED PER MANUFACTURER'S SPECIFICATIONS.	

**PETER LEE, P.E. M.S.**  
 ENGINEERING INTERNATIONAL, INC.  
 ENGINEER: PETER LEE, P.E., M.S.  
 CONSULTING ENGINEER  
 23329 CENTURY DRIVE  
 ELKHART, IN 46514

Nov. 11, 2015

STATE OF MAINE  
 PIN-SHI PETER LEE  
 No. 12156  
 LICENSED PROFESSIONAL ENGINEER

This document and all information contained herein, are the proprietary data and trade secrets of Vanguard Modular Building Systems (VMBS), and Schiavi Leasing Corporation (Schiavi). This document and the information contained herein may not be reproduced, used, or disclosed in any manner, or to any extent. Written authorization by a current employee of VMBS or Schiavi must be obtained prior to use of this information, in any form, including that which is represented by this complete page.

Drawing Date: 11-10-2015  
 Project: PORTLAND, ME  
 Drawn By: J.L.B.  
 Sheet: X1  
 Scale: NONE  
 6 of 6