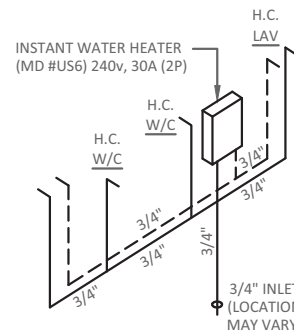


D.W.V. RISER NOTES:

1. THE D.W.V. RISER INDICATES ONE METHOD OF INSTALLING THE BELOW THE FLOOR PIPING. OTHER APPROVED METHODS MAY BE USED AS NEEDED TO ACCOMODATE THE ACTUAL SITE CONDITIONS.
2. ALL BELOW FLOOR PIPING AND FITTINGS ARE TO BE SUPPLIED AND INSTALLED ON SITE BY OTHERS.
3. 1 1/2 INCH AND 2 INCH HORIZONTAL DRAIN LINES SHALL BE INSTALLED WITH A SLOPE OF 1/4 INCH PER FOOT.
4. 3 AND 4 INCH HORIZONTAL DRAIN LINES SHALL BE INSTALLED WITH A SLOPE OF 1/8 INCH PER FOOT.
5. BELOW FLOOR HORIZONTAL DRAIN LINES ARE 3 INCH MINIMUM DIAMETER UNLESS INDICATED OTHERWISE.
6. A MAXIMUM OF 3 WATER CLOSETS MAY DISCHARGE INTO A 3 INCH LIN.
7. CHANGES IN DIRECTION SHALL BE MADE WITH FITTINGS AS INDICATED IN TABLE 706.3. VERTICAL TO HORIZONTAL AND HORIZONTAL TO HORIZONTAL CHANGES OF DIRECTION ARE TO BE MADE WITH LONG SWEEP FITTINGS.

D.W.V. RISER

SCALE: N.T.S.



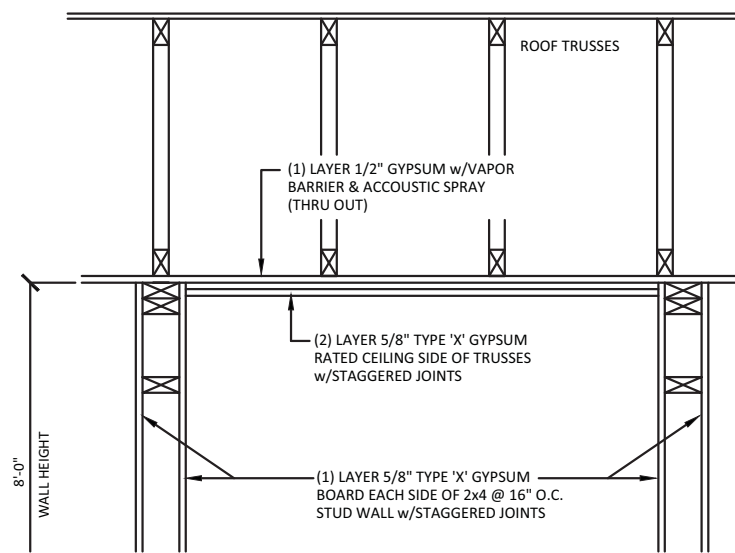
ALL PLUMBING FIXTURES TO HAVE SHUT-OFF VALVES. VALVES NOT SHOWN FOR CLARITY.

SUPPLY RISER

SCALE: N.T.S.

HOT -----
COLD _____

ALL SUPPLY LINES SHALL BE 3/4" AND ALL STUB-UPS SHALL BE 1/2" UNLESS OTHERWISE SPECIFIED. SUPPLY LINE SIZING IS BASED ON AN ASSUMED AVAILABLE PRESSURE OF 46 TO 60 PSI AT MAIN INLET AND SHOULD BE VERIFIED PRIOR TO CONSTRUCTION.



**RATED CEILING CONSTRUCTION
RATED WALL CONSTRUCTION**

SCALE: NONE

FIRE ASSEMBLY NOTES:

- CEILING: 1 HOUR PER UL NO. FC 5406 - (1) LAYER OF 5/8" TYPE-X GYPSUM BOARD EACH SIDE, WITH BUTT JOINTS STAGGERED
- WOOD STUD WALLS: 1 HOUR PER UL NO. WP3520 - (2) LAYER OF 5/8" TYPE-X GYPSUM BOARD EACH SIDE, WITH BUTT JOINTS STAGGERED
- EXCEPTION: USE GYPSUM ASSOC. FILE NO. WP3520 ON WALLS WHERE THE 5/8" TYPE-X GYPSUM BOARD HAS PREDECORATED OR VINYL COVERED FINISH AND FASTEN IT WITH 6d COATED NAILS 1 7/8" LONG, 0.0915" SHANK, 1/4" HEADS, 7" O.C AT JOINTS AND TOP AND BOTTOM PLATES AND 3/8" BEAD OF ADHESIVE AT INTERMEDIATE STUDS.

PENETRATION OF FIRE RESISTANT WALLS AND CEILINGS:

1. COMBUSTIBLE CABLES AND WIRES, COMBUSTIBLE PIPES, TUBES, AND CONDUITS SHALL MEET THE TESTING REQUIREMENTS OF ASTM E119 AS PART OF THE FIRE RESISTANT ASSEMBLY OR SHALL HAVE THROUGH-PENETRATION FIRESTOP SYSTEMS LISTED AND TESTED AS PER ASTM E814 AND BE TESTED AT A POSITIVE PRESSURE DIFFERENTIAL BETWEEN THE EXPOSED AND UNEXPOSED SURFACES OF NOT LESS THAN .01 INCH OF WATER AND HAVE AN "F" RATING OF AT LEAST 1 HOUR BUT NOT LESS THAN THE RATED OF THE ASSEMBLY.
2. CABLES AND WIRES WITHOUT COMBUSTIBLE INSULATIONS AND NON-COMBUSTIBLE PIPES, TUBES, AND CONDUITS SHALL BE PROTECTED AS DESCRIBED ABOVE OR SHALL HAVE THE ANNULAR SPACE FILLED WITH A MATERIAL MEETING THE REQUIREMENT OF ASTM E119 TESTED UNDER A MINIMUM POSITIVE PRESSURE DIFFERENTIAL OF .01 INCH OF WATER FOR A PERIOD EQUIVALENT TO THE RATING OF THE ASSEMBLY.
3. ELECTRICAL BOXES SHALL BE METAL OR LISTED FOR USE IN FIRE RESISTANT ASSEMBLIES AND SHALL NOT EXCEED 16 SQUARE INCHES. BOXES ON OPPOSITE SIDES OF FIRE RESISTANT WALLS SHALL BE SEPARATED BY A MINIMUM HORIZONTAL DISTANCE OF 24 INCHES.
4. ALL CEILING FIXTURES SHALL BE SURFACE MOUNTED.
5. DUCTS PENETRATING FIRE RESISTANT CEILINGS SHALL HAVE AN ACCESSIBLE LISTED FIRE DAMPER LOCATED AT THE CEILING LINE.
6. ALL FIRE RATED DOORS SHALL HAVE LISTED DOOR, FRAME AND HARDWARE NO LESS THAN THE TIME RATING SPECIFIED ON THE FLOOR PLAN. IN ADDITION FIRE RATED DOORS SHALL BE WITH SELF CLOSERS UNLESS OTHERWISE SPECIFIED.

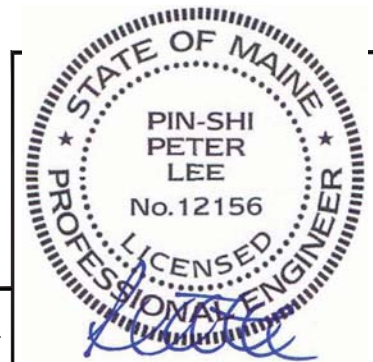
ALL PLUMBING FIXTURES TO HAVE SHUT-OFF VALVES. VALVES NOT SHOWN FOR CLARITY.

DOOR SCHEDULE

#	SIZE	DESCRIPTION	QTY	HEADER	JACKS	KINGS	COMMENTS
A	36"x80"	EXT. DOOR - STEEL - INSULATED	2	TRIPL 2x6	1	2	
	w/20"x30" SAFETY GLASS VIEW PANEL, WOOD FRAME, KEYED LEVER LOCKSET, CLOSER, WEATHERSTRIPPING, H.C. THRESHOLD						
B	36"x80"	INT. DOOR - WOOD - SOLID CORE - 20 MIN. RATED	2	SNGL 2x4	-	1	
	w/5"x20" WIRE GLASS VIEW PANEL, RATED FRAME, KEYED LEVER LOCKSET, CLOSER, WEATHERSTRIPPING, H.C. THRESHOLD						
C	36"x80"	INT. DOOR - WOOD - SOLID CORE	2	SNGL 2x4	-	1	
	w/PRE-HUNG WOOD FRAME, PRIVACY LEVER LOCKSET, CLOSER						
D	36"x80"	INT. DOOR - WOOD - HOLLOW CORE	2	SNGL 2x4	-	1	
	w/PRE-HUNG WOOD FRAME, PASSAGE LEVER LOCKSET						

WINDOW SCHEDULE

#	SIZE	DESCRIPTION	QTY	HEADER	JACKS	KINGS	U-VALUE	SHGC	VT	LIGHT SF	VENT SF	DP	COMMENTS
1	48"x48"	EXT. WINDOWS - VERT SLIDING	16	TRIPL 2x6	1	2	.28	.28	.50	9.10	4.25	+50/-50	
	VINYL - INSULATED - LowE - WHITE FRAME / CLEAR GLASS w/MINI-BLINDS												



PETER LEE, P.E. M.S.
ENGINEERING INTERNATIONAL, INC.
ENGINEER: PETER LEE, P.E., M.S.
CONSULTING ENGINEER
23329 CENTURY DRIVE
ELKHART, IN 46514

Nov. 11, 2015



SCHIAVI LEASING
JENNIFER CURRIER
103 AIRPORT ROAD
OXFORD, ME 04270
PH: (207) 539-8211
FAX:
WWW.VANGUARDMODULAR.COM

PLUMBING SCHEMATICS & FIRE RATING DETAILS

SERIAL #: 1386 A-B
OCCUP: E
DRAWING #: VGM-2015-0027

This document and all information contained herein, are the proprietary data and trade secrets of Vanguard Modular Building Systems (VMBS), and Schiavi Leasing Corporation (Schiavi). This document and the information contained herein may not be reproduced, used, or disclosed in any manner, or to any extent. Written authorization by a current employee of VMBS or Schiavi must be obtained prior to use of this information, in any form, including that which is represented by this complete page.

Drawing Date: 11-10-2015	Project: PORTLAND, ME
Drawn By: J.L.B.	Sheet: P1
Scale: NONE	4 of 6