

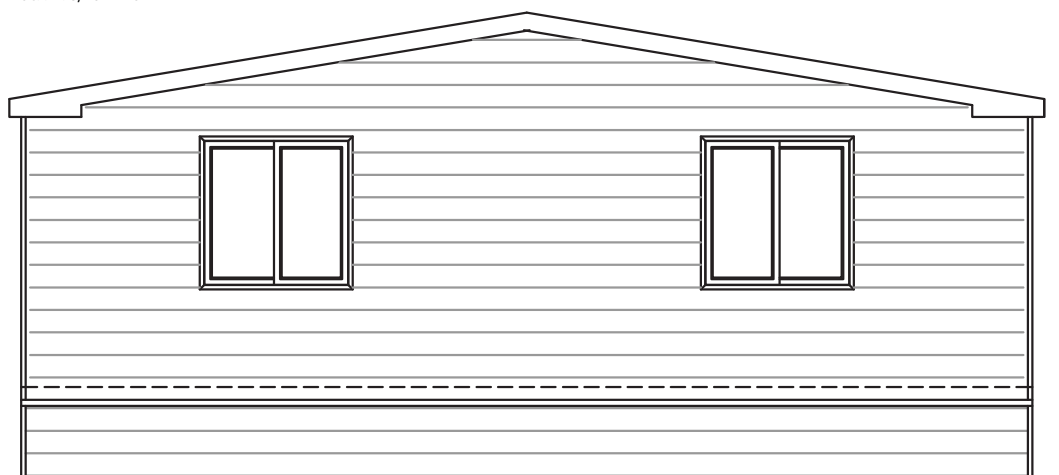
**FRONT ELEVATION**

SCALE: 3/16"=1'-0"



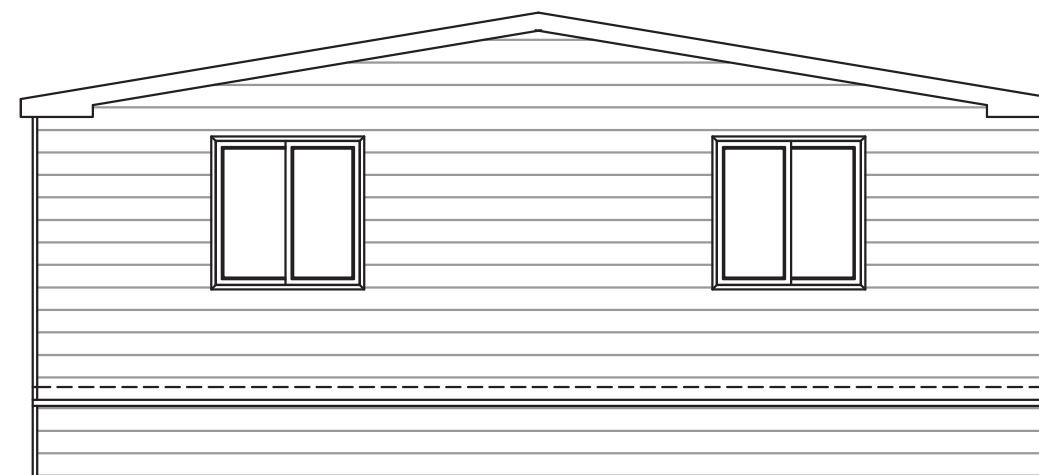
**REAR ELEVATION**

SCALE: 3/16"=1'-0"



**RIGHT SIDE ELEVATION**

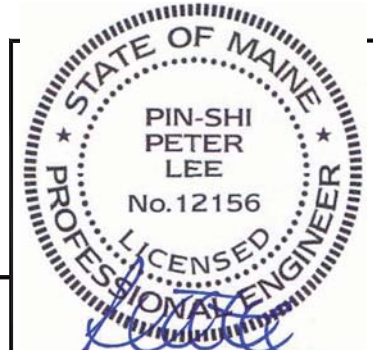
SCALE: 3/16"=1'-0"



**LEFT SIDE ELEVATION**

SCALE: 3/16"=1'-0"

**PETER LEE, P.E. M.S.**  
 ENGINEERING INTERNATIONAL, INC.  
 ENGINEER: PETER LEE, P.E., M.S.  
 CONSULTING ENGINEER  
 23329 CENTURY DRIVE  
 ELKHART, IN 46514



Nov. 11, 2015



SCHIAVI LEASING  
 JENNIFER CURRIER  
 103 AIRPORT ROAD  
 OXFORD, ME 04270  
 PH: (207) 539-8211  
 FAX:  
 WWW.VANGUARDMODULAR.COM

SERIAL #: 351-B  
 OCCUP: E  
 DRAWING #: VGM-2015-0028

**EXTERIOR ELEVATIONS**

This document and all information contained herein, are the proprietary data and trade secrets of Vanguard Modular Building Systems (VMBS), and Schiavi Leasing Corporation (Schiavi). This document and the information contained herein may not be reproduced, used, or disclosed in any manner, or to any extent. Written authorization by a current employee of VMBS or Schiavi must be obtained prior to use of this information, in any form, including that which is represented by this complete page.

Drawing Date: 11-10-2015	Project: PORTLAND, ME
Drawn By: J.L.B.	Sheet: <b>A1</b>
Scale: 3/16"=1'-0"	2 of 6